

APPENDIX 1

**Marion County
HEALTH DEPARTMENT
ORGANIZATIONAL CHARTS**



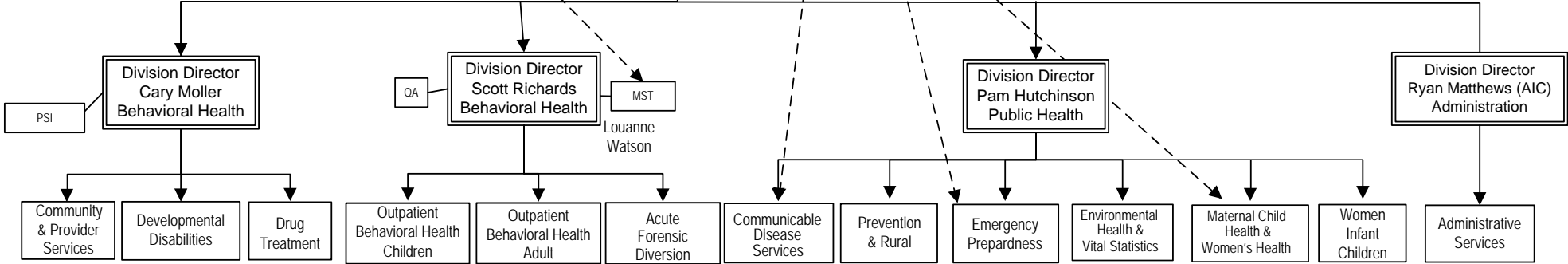
HEALTH DEPARTMENT

Org Chart FY 8/29/2016

Health Administrator
Roderick Calkins, Ph.D.

*Behavioral Health Medical Director .50
Robert Wolf, MD

Public Health Health Officer .60
Karen Landers, MD



- | | | | | | | | | | | | | |
|---|---|--|--|--|---|---|---|---|---|--|---|--|
| <ul style="list-style-type: none"> New Solutions Hosp Svcs Liason Res. Systems SGF A & D Contracts DHS Assessment MV-WRAP SOCS CII/AMHI CCP Peer Wellness Rental Assistance | <ul style="list-style-type: none"> Regional Crisis Case Management Provider Payments QA PSI Support Services Licensing Eligibility PSRB | <ul style="list-style-type: none"> ITRS Metadone Adolescent Drug TX Adult Drug TX Her Place SOAR MCTTRC | <ul style="list-style-type: none"> CBH PCIT COP IOP EASA Parenting Teen Latino Project Mission: Transition | <ul style="list-style-type: none"> Gero Psych Residential ABH PSRB Supported Employment Supported Housing ACT | <ul style="list-style-type: none"> Jail PCC 370 BRES Respite CCOT Diversion Mobile Crisis CORT | <ul style="list-style-type: none"> Epidemiology TB STI HIV Prevention HIV Case Mgmt Immunization Flu | <ul style="list-style-type: none"> Prevention Services A & D Problem Gambling Tobacco Teen Pregnancy | <ul style="list-style-type: none"> Public Health Emergency Preparedness | <ul style="list-style-type: none"> Licensed Facilities Vital Statistics Vector Water | <ul style="list-style-type: none"> Reproductive Health Early Childhood Nursing Maternity Case Mgmt A & D Moms | <ul style="list-style-type: none"> WIC Peer Breastfeeding Support | <ul style="list-style-type: none"> Fiscal Contracts Audits Facilities Billing/AR HR/Payroll Support Svcs HIPAA Client Records |
|---|---|--|--|--|---|---|---|---|---|--|---|--|

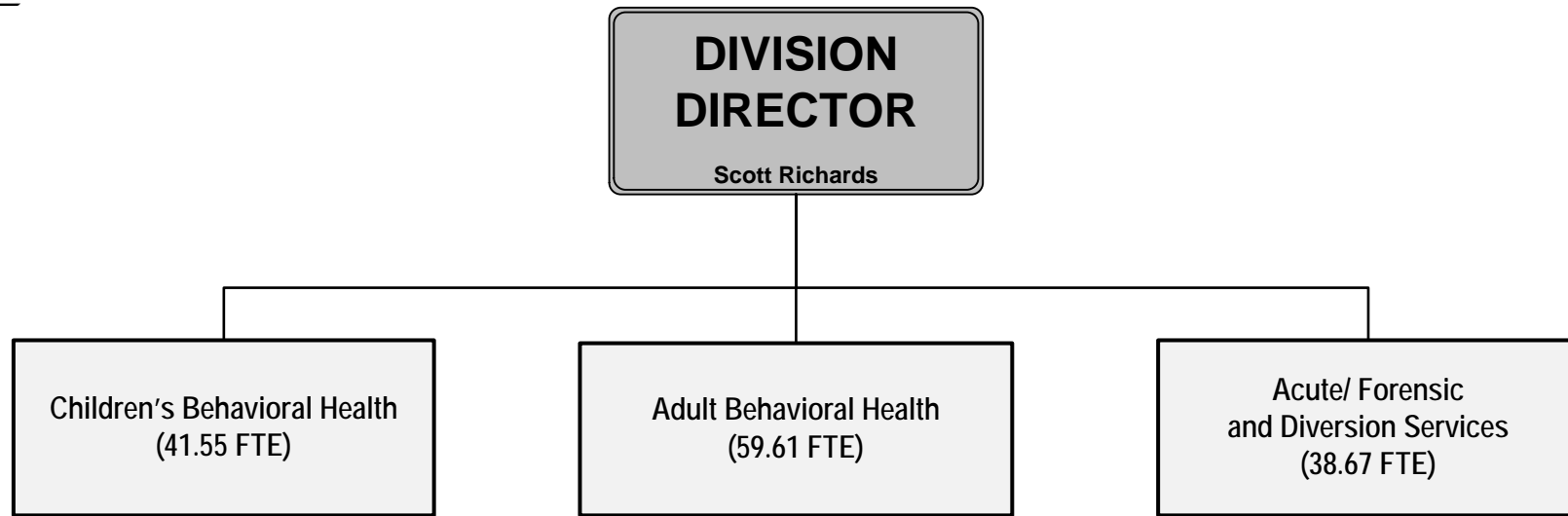


**DIVISION
DIRECTOR**

Vacant

Administrative Services
(33.99 FTE)

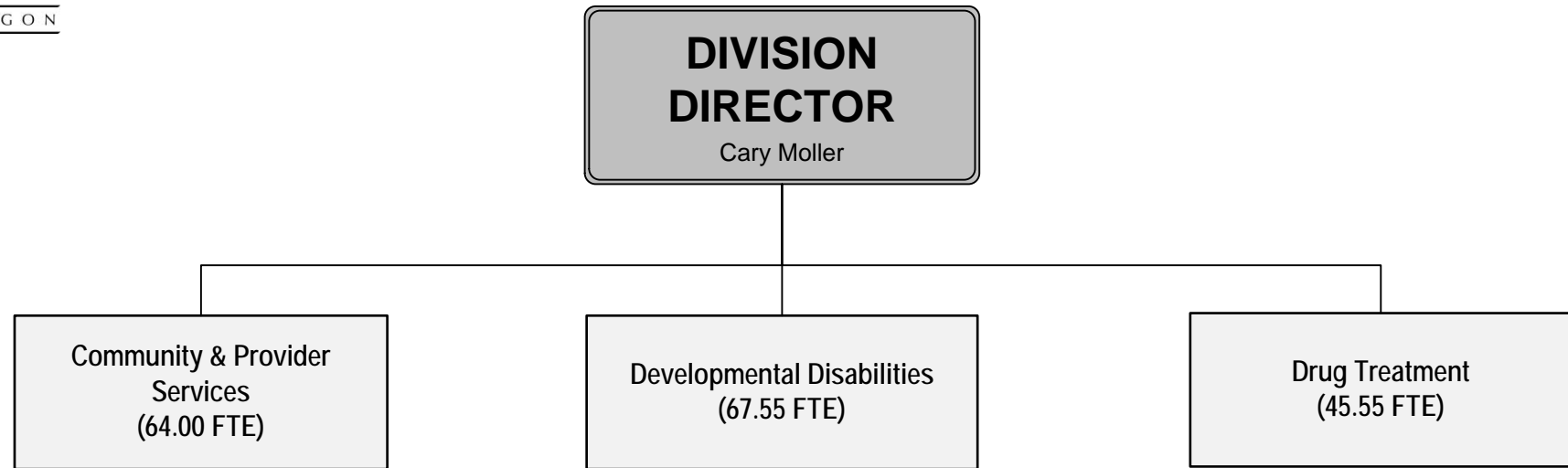
- Fiscal
- Contracts
- Audits
- Facilities
- Billing/Accounts Receivable
- Human Resources/Payroll
- Support Services
- HIPAA
- Client Records
- Rural Office Management



- Children's Outpatient
- Parent-Child Interactive Therapy
- Early Assessment & Support Alliance
- Parenting
- Teen Latino Project
- Transitional Aged Youth

- Adult Outpatient
- Gero Psych
- Residential
- Psychiatric Security Review Board
- Supported Employment
- Supported Housing
- Assertive Community Treatment

- Psychiatric Crisis Center
- Jail
- Respite
- Diversion
- Mobile Crisis
- Community Outreach Response Team



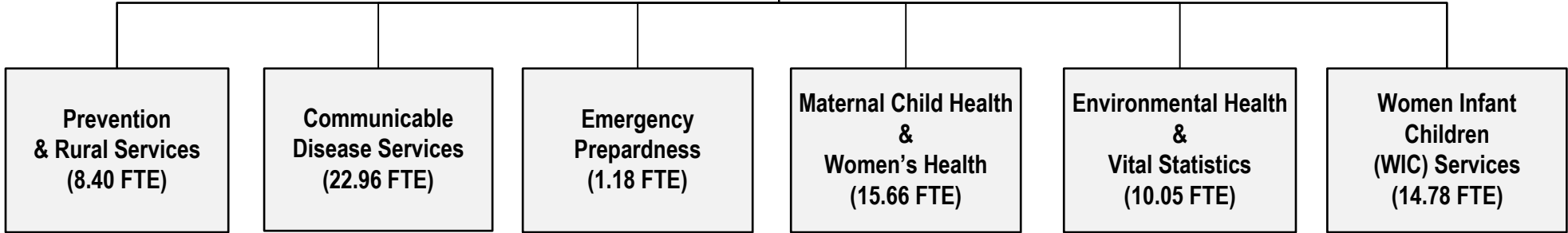
- Children's High Fidelity Wraparound
- Hosp Services Liaison
- Res. Systems
- DHS Assessment
- CII/AMHI
- Peer Wellness
- Rental Assistance
- A&D Provider Panel

- Regional Team
- Case Management
- Provider
- Payments
- Support Services
- Eligibility
- Licensing
- Protective Services Investigations

- Methadone
- Adolescent Drug Treatment
- Adult Drug Treatment
- Her Place
- Subcome
- Access to Recovery



DIVISION DIRECTOR
Pam Hutchinson



- Epidemiology
- TB
- STI
- HIV Prevention/ Case Management
- Immunizations
- Flu

- Prevention Services
- A & D
- Problem Gambling
- Tobacco
- Teen Pregnancy

- Public Health
- Emergency Preparedness

- Licensed Facilities
- Vital Statistics
- Vector
- Water

- Reproductive Health
- Early Childhood Nursing
- Maternity Case Mgmt
- A & D Moms

- WIC
- Peer Breastfeeding Support