

Great Beginnings Progress 2010

Promote & Prevent - The Marion County Children and Families Commission, through its Great Beginnings Consortium, promotes healthy social and emotional development and improves the systems that serve young children and their families. Great Beginnings' efforts focus on preventing child abuse, trauma, school failure, high-risk adolescent behaviors and ultimately preventing adult involvement in the child welfare or criminal justice systems.

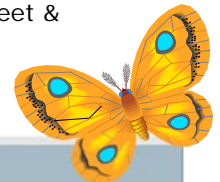
Over 25 organizations join forces with the Children and Families Commission to integrate innovative and effective early interventions, enrichment models and family-strengthening policies into practice.



Services and Supports

Through its Great Beginnings Consortium, the Children and Families Commission:

- Launched Healthy Attachment project, focusing on young children involved in the foster care system.
- Began piloting an online developmental screening tool for parents.
- Conducted Great Beginnings partnership presentations at four medical offices.
- Developed and sponsored Teen Parent Healthy Attachment project, delivering weekly workshops to 50 to 80 teen parents.
- Pursued parent input, hosting a Meet & Greet for parents



Training:

- ◆ Hosted Grand Rounds for medical professionals
- ◆ Provided early childhood workshops at the "For the Love of Literacy" conference
- ◆ Hosted START training for medical providers
- ◆ Hosted Developmental Check for Young Children training for home visitors
- ◆ Provided numerous classes for parents and professionals (hosted by partners)
- ◆ Trained 11 partners in the Circle of Security Parenting curriculum for the Healthy Attachment Project



Structural Operations:

- ◆ Merged local advisory functions of early childhood efforts of Healthy Start and early intervention/early special education
- ◆ Advocated for the Mid-Valley Wrap Around project to consider serving children five and younger
- ◆ Refined work plan to address needs and opportunities
- ◆ Held monthly meetings to prepare for a LAUNCH grant submission
- ◆ Secured Portland State University intern to further the Healthy Attachment project
- ◆ Increased the number of educational presentations by partners across the system

