



Marion County **OREGON**

PUBLIC WORKS

BOARD OF COMMISSIONERS
Sam Brentano
Janet Carlson
Patti Milne

January 19, 2006

DIRECTOR
James V. Sears, P.E.

ADDENDUM NO. 2

ADMINISTRATION

To All Planholders:

BUILDING INSPECTION

RE: Mill Creek Bridge (Br. NO. 1501) Denver Street - Marion Road SE Bridge Replacement, Grading, Paving and Drainage

DOG CONTROL

ADDENDUM NO.2

EMERGENCY MANAGEMENT

To All Planholders:

ENGINEERING

ENVIRONMENTAL SERVICES

Please note the following revisions to the Special Specifications Table of Contents:

PARKS

PLANNING

Add the following Supplemental Standard Specification to the Table of Contents, page 5:

OPERATIONS

SECTION 00589 Utility Attachments on Structures

SURVEY

This Supplemental Standard Specification is enclosed with this addendum.

Please note the following revisions to the Special Provisions:

Section 00970.90 Lump Sum Basis - Add the following bid item:

(h) Conduit Lump Sum

Item (h) includes all electrical conduit and junction boxes as shown on the plans with pull string but no wire.

Section 01140 - Potable Water Pipe and Fittings - Revise this section title to read as follows:

Section 01140 - Potable Water Pipe and Fittings and Sanitary Force Main

01140.00 Scope - Revise the first paragraph of this subsection to read as follows:

This work consists of constructing potable water pipe, sewer force mains and associated fittings 16 inches and smaller in diameter.

1140.47 Connections to Existing Mains - Add the following to this subsection:

The City of Turner will isolate the existing 6" potable water main to be replaced. Coordinate the construction schedule with the City to minimize down time on the main.

The 4" sanitary sewer force main must remain in service during construction and a bypass will be required. Construct the temporary bypass and maintain service during the construction.

01140.52 Disinfecting - Add the following to this subsection:

No disinfection, chlorination or bacteriological testing will be required for the sanitary sewer force main.

01140.80 Trench Work - Revise this subsection to read as follows:

Trench excavation, bedding, pipe zone material and trench backfill will be measured and paid according to Section 00405 as revised in the Special Provisions.

01140.90 General - Delete the second paragraph of this subsection.

Add the following paragraph:

Payment for bedding, pipe zone material and trench backfill will be made according to Section 00405 as revised in the Special Provisions.

01140.91 Pipe, Fittings and Couplings - Revise this subsection to read as follows:

Pipe, fittings and couplings will be paid for by the foot, for one or more of the following pay items:

- (a) ___ inch Ductile Iron Pipe, Fittings and Couplings, Class 50

- (b) ___ inch Ductile Iron Pipe, Fittings and Couplings, Class 50
With Restrained Joints

The nominal diameter of pipe, fittings and couplings will be inserted in the blank. The total pay quantities will include the quantities of pipe measured according to 01140.82 plus the pay quantity allowance defined in 01140.83 for fittings and couplings.

Add the following Subsection:

01140.96 Bypass - Payment will be made at the lump sum price for "Bypass Installation and Removal" including furnishing all material, labor connections and incidentals required to continually maintain a 4 inch force main connection between the sanitary sewer pump station on the east side of the bridge and the gravity manhole on the west side.

Please note the following revisions to the Plans:

Replace sheets 3, 3B, and 7 with the enclosed sheets. Changes are clouded and include addition of water and sewer line relocation work for the City of Turner and substitution of 36" pipe for 30" pipe in Note 23, sheet 3.

Replace the Schedule of Bid Items with enclosed pages 7, 8, and 9:

Changes to the Schedule of Bid Items include the following:

405.300 ¾"-0 AGGREGATE BEDDING, PIPE ZONE MATERIAL AND BACKFILL
Increase the quantity to 500 ton

445.450 30" STORM SEWER PIPE
Reduced quantity to 32 Foot.

Add the following bid items:

445.500 36" STORM SEWER PIPE
589.100 UTILITY ATTACHMENT ON STRUCTURES
970.360 CONDUIT
1140.403 4" DUCTILE IRON WATER PIPE, Fittings and Couplings, CLASS 50
1140.404 4" DUCTILE IRON WATER PIPE, Fittings and Couplings, CLASS 50
WITH RESTRAINED JOINTS
1140.430 10" DUCTILE IRON WATER PIPE, Fittings and Couplings, CLASS 50
WITH RESTRAINED JOINTS

Addendum No. 2
January 19, 2006

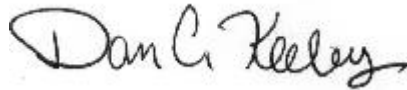
Page 4 of 9

1140.850 BYPASS INSTALLATION AND REMOVAL

Addendum No.2 shall become a part of the Plans and Specifications and shall be binding as though it were contained therein. **Please sign the addendum below and include it in your proposal when submitted.**

If you have any questions, please call me at (503)588-5036.

Sincerely,



Dan Keeley, P.E.
Civil Engineer

DCK:sen

Dated this _____ Day of January, 2006.

ADDENDUM NO.2 CONTENTS READ AND ACKNOWLEDGED

Bidder

By

Enclosed: Schedule of Bid Items, Section 00589, Sheets 3, 3B, and 7

G:\Engineering\ProjectCentral\Projects\Bridge_1501_MillCreek\Design\Specs\Addendums\AddendumNo.2.doc

MILL CREEK BRIDGE (BR. NO. 1501) DENVER ST - MARION RD/DENVER

Schedule Of Bid Items - Addendum #2 January 19, 2006

CONTRACT NUMBER 2006-251

**PROJECT NUMBER 1 MILL CREEK BRIDGE (BR. NO. 1501)
DENVER ST - MARION RD/DENVER ST**

ITEM #	PROJECT ITEM DESCRIPTION	QUANTITY	UNITS	PRICE	AMOUNT
210.100	MOBILIZATION	1	Lump Sum	\$ _____	\$ _____
225.050	TEMPORARY PROTECTION AND DIRECTION OF TRAFFIC	1	Lump Sum	\$ _____	\$ _____
225.070	TEMPORARY SIGNS	420	Square Foot	\$ _____	\$ _____
225.090	AMBER FLASHERS	6	Each	\$ _____	\$ _____
225.114	TEMPORARY BARRICADES, TYPE III	6	Each	\$ _____	\$ _____
225.490	FLAGGERS	700	Hour	\$ _____	\$ _____
280.100	EROSION CONTROL	1	Lump Sum	\$ _____	\$ _____
280.150	CHECK DAMS	2	Each	\$ _____	\$ _____
280.400	SEDIMENT FENCE, SUPPORTED	300	Foot	\$ _____	\$ _____
290.100	POLLUTION CONTROL PLAN	1	Lump Sum	\$ _____	\$ _____
305.100	CONSTRUCTION SURVEY WORK	1	Lump Sum	\$ _____	\$ _____
310.100	REMOVAL OF STRUCTURES AND OBSTRUCTIONS	1	Lump Sum	\$ _____	\$ _____
320.100	CLEARING AND GRUBBING	1	Lump Sum	\$ _____	\$ _____
330.080	TOE TRENCH EXCAVATION	1	Lump Sum	\$ _____	\$ _____
330.460	EMBANKMENT IN PLACE	1	Lump Sum	\$ _____	\$ _____
331.200	12" SUBGRADE STABILIZATION	300	Square Yard	\$ _____	\$ _____
340.100	WATERING	0.1	Million Gallon	\$ _____	\$ _____
350.145	RIPRAP GEOTEXTILE, TYPE 2	500	Square Yard	\$ _____	\$ _____
390.120	LOOSE RIPRAP, CLASS 100	25	Cubic Yard	\$ _____	\$ _____
390.160	LOOSE RIPRAP, CLASS 700	400	Cubic Yard	\$ _____	\$ _____
405.300	3/4"-0 AGGREGATE BEDDING, PIPE ZONE MATERIAL AND BACKFILL	500	Ton	\$ _____	\$ _____
445.199	12" STORM SEWER PIPE	630	Foot	\$ _____	\$ _____
445.450	30" STORM SEWER PIPE	32	Foot	\$ _____	\$ _____
445.500	36" STORM SEWER PIPE	78	Foot	\$ _____	\$ _____
470.200	CONCRETE MANHOLES, WATER QUALITY	2	Each	\$ _____	\$ _____

MILL CREEK BRIDGE (BR. NO. 1501) DENVER ST - MARION RD/DENVER

Schedule Of Bid Items - Addendum #2 January 19, 2006

470.396	CONCRETE INLETS, TYPE G-1, TYPE 2 GRATE	1 Each	\$ _____	\$ _____
470.402	CONCRETE INLETS, TYPE CG-2, TYPE 2 GRATE	1 Each	\$ _____	\$ _____
470.406	CONCRETE INLETS, TYPE CG-3	3 Each	\$ _____	\$ _____
490.100	MINOR ADJUSTMENT OF MANHOLES	3 Each	\$ _____	\$ _____
490.300	MINOR ADJUSTMENT OF BOXES	3 Each	\$ _____	\$ _____
490.350	MAJOR ADJUSTMENT OF BOXES	2 Each	\$ _____	\$ _____
501.100	BRIDGE REMOVAL WORK	1 Lump Sum	\$ _____	\$ _____
510.250	STRUCTURE EXCAVATION	1 Lump Sum	\$ _____	\$ _____
510.800	CONTROLLED LOW STRENGTH MATERIAL BACKFILL	22 Cubic Yard	\$ _____	\$ _____
520.100	FURNISH PILE DRIVING EQUIPMENT	1 Lump Sum	\$ _____	\$ _____
520.220	FURNISH HP 12 X 53 STEEL PILES	600 Foot	\$ _____	\$ _____
520.420	DRIVE HP 12 X 53 STEEL PILES	18 Each	\$ _____	\$ _____
520.620	HP 12 X 53 STEEL PILE SPLICES	3 Each	\$ _____	\$ _____
530.100	REINFORCEMENT	1 Lump Sum	\$ _____	\$ _____
540.155	STRUCTURAL CONCRETE, CLASS 3600	1 Lump Sum	\$ _____	\$ _____
550.325	30" PRECAST PRESTRESSED SLABS	1,053 Foot	\$ _____	\$ _____
587.300	TEXAS TYPE CONCRETE BRIDGE RAIL	1 Lump Sum	\$ _____	\$ _____
589.100	UTILITY ATTACHMENT ON STRUCTURES	1 LUMP SUM	\$ _____	\$ _____
596.500	RETAINING WALL, MSE	250 Square Foot	\$ _____	\$ _____
620.250	COLD PLANE PAVEMENT REMOVAL, 2" DEEP	2,500 Square Foot	\$ _____	\$ _____
641.100	1"-0 AGGREGATE BASE	840 Ton	\$ _____	\$ _____
641.200	3/4"-0 AGGREGATE SHOULDERS	220 Ton	\$ _____	\$ _____
745.450	LEVEL 3, 1/2", DENSE, PG 64-22, HMAC	1,900 Ton	\$ _____	\$ _____
745.460	LEVEL 3, 1/2", DENSE, PG 70-22, HMAC	500 Ton	\$ _____	\$ _____
749.100	EXTRA FOR ASPHALT DRIVEWAY APPROACHES	5 Each	\$ _____	\$ _____

SECTION 00589 - UTILITY ATTACHMENTS ON STRUCTURES

Section 00589, which is not a Standard Specification, is included in this Project by Special Provision.

Description

00589.00 Scope - This work consists of providing for attachment or installation of City of Turner Water Main and Sanitary Sewer Force Main on Bridge 1501 as shown or as directed.

Materials

00589.10 General - Construct utility attachment systems using materials from the QPL and meeting the following requirements:

Structural steel	02530
Forgings, shafting, castings and nonferrous materials ..	02540
Fasteners	02560
Reflective sheeting	02910.30
Resin bonded anchor system	00535.10

Furnish brackets constructed of stainless steel or hot-dip galvanized structural steel as shown on the plans or approved by the engineer.

Construction

00589.40 General - Provide sufficient space around utilities for maintenance activities.

Attach conduits or brackets to concrete structures with cast in place threaded inserts unless otherwise shown or approved.

00589.48 Labeling - Clearly label all piping or conduit systems according to the following APWA color code:

Table 00589-1

Material	Marker Background Color
Electrical Power Lines, Cables, Conduits, Lighting Cables	Red
Gas, Oil, Steam, Petroleum, Gaseous Materials	Yellow
Communications, Alarm, Signal Lines, Cables, or Conduits	Orange
Potable Water	Blue
Sewers, and Drain Lines	Green

Minimum length of label shall be 12".

Place labels on each pipe or conduit. Place pipe labels so that label may be seen from normal eye height.

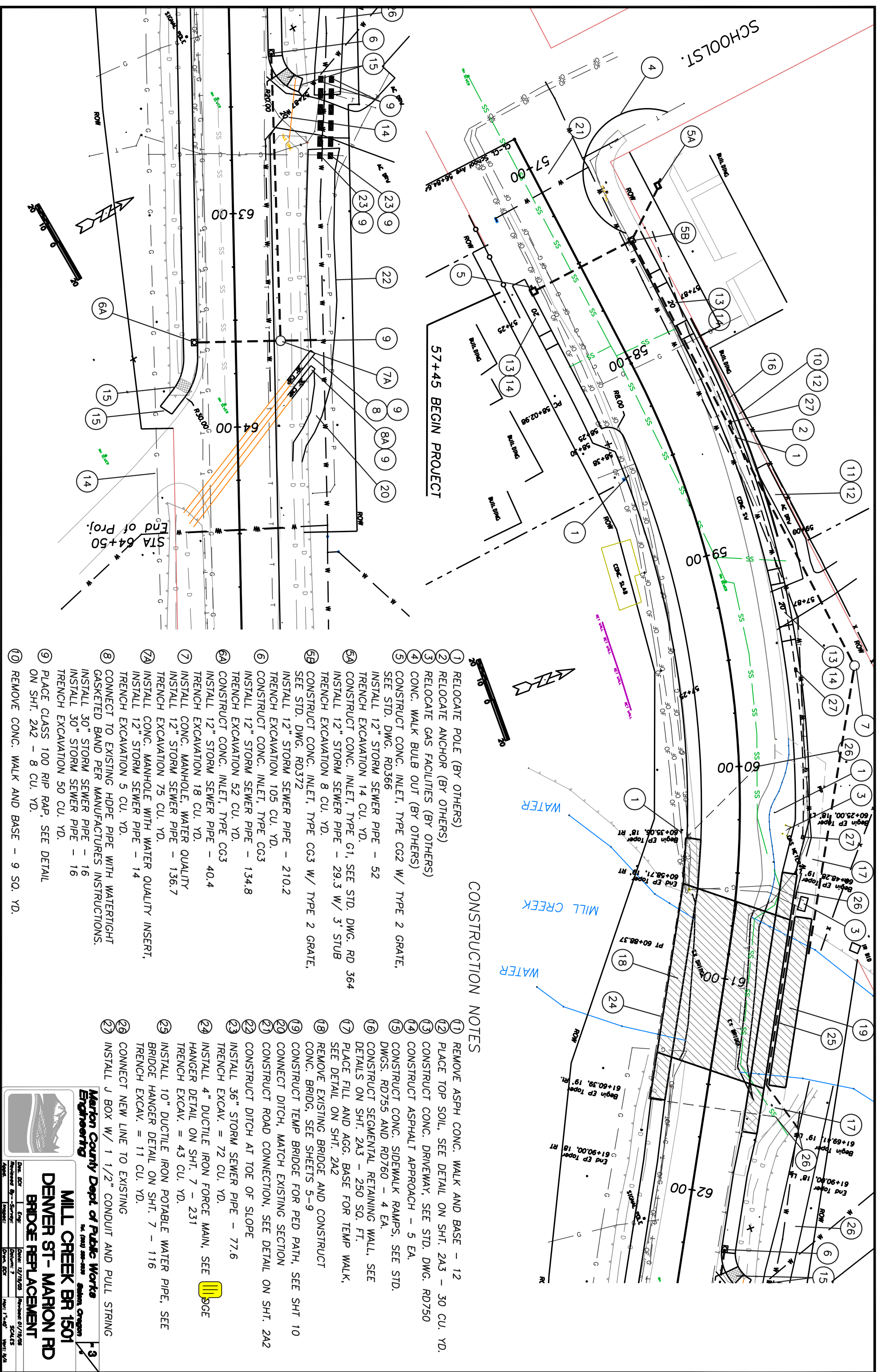
Measurement

00589.80 Lump Sum Basis - No measurement of quantities will be made for this work.

Payment

00589.90 Lump Sum Basis - Payment for this work will be made at the Contract lump sum amount for the item "Utility Attachment on Structures".

Payment will payment in full for furnishing all materials, equipment, labor, and incidentals necessary to complete the work as specified.



57+45 BEGIN PROJECT

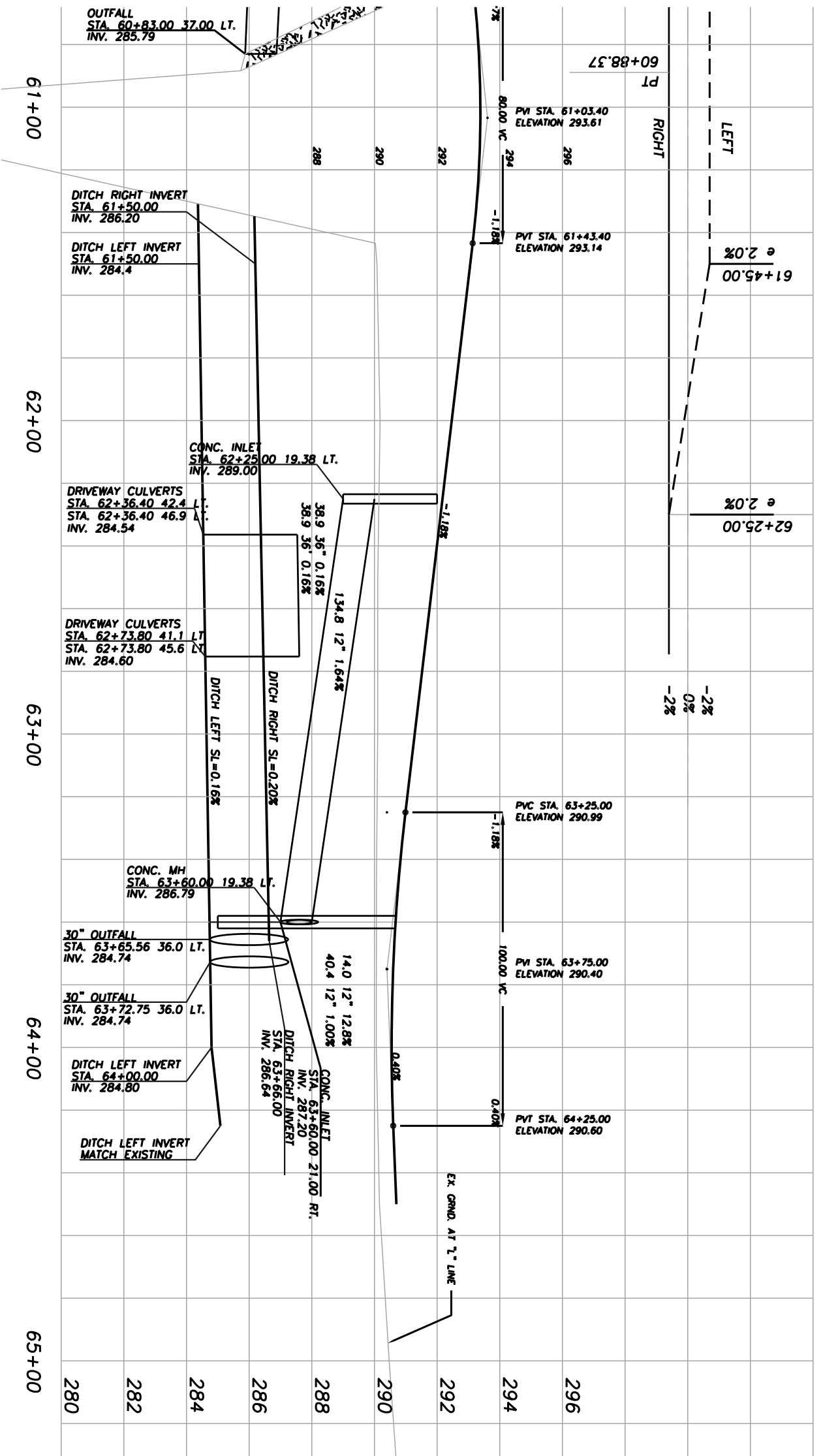
CONSTRUCTION NOTES

- ① RELOCATE POLE (BY OTHERS)
- ② RELOCATE ANCHOR (BY OTHERS)
- ③ RELOCATE GAS FACILITIES (BY OTHERS)
- ④ CONC. WALK BULB OUT (BY OTHERS)
- ⑤ CONSTRUCT CONC. INLET, TYPE CG2 W/ TYPE 2 GRATE, SEE STD. DWG. RD3566
- ⑥ INSTALL 12" STORM SEWER PIPE - 52 TRENCH EXCAVATION 14 CU. YD.
- ⑦ CONSTRUCT CONC. INLET, TYPE G1, SEE STD. DWG. RD 364
- ⑧ INSTALL 12" STORM SEWER PIPE - 29.3 W/ 3' STUB TRENCH EXCAVATION 8 CU. YD.
- ⑨ CONSTRUCT CONC. INLET, TYPE CG3 W/ TYPE 2 GRATE, SEE STD. DWG. RD372
- ⑩ INSTALL 12" STORM SEWER PIPE - 210.2 TRENCH EXCAVATION 105 CU. YD.
- ⑪ CONSTRUCT CONC. INLET, TYPE CG3
- ⑫ INSTALL 12" STORM SEWER PIPE - 134.8 TRENCH EXCAVATION 52 CU. YD.
- ⑬ CONSTRUCT CONC. INLET, TYPE CG3
- ⑭ INSTALL 12" STORM SEWER PIPE - 40.4 TRENCH EXCAVATION 18 CU. YD.
- ⑮ INSTALL 12" STORM SEWER PIPE - 136.7 TRENCH EXCAVATION 75 CU. YD.
- ⑯ INSTALL CONC. MANHOLE WITH WATER QUALITY INSERT, TRENCH EXCAVATION 5 CU. YD.
- ⑰ CONNECT TO EXISTING HDPE PIPE WITH WATERTIGHT GASKETED BAND PER MANUFACTURERS INSTRUCTIONS.
- ⑱ INSTALL 30" STORM SEWER PIPE - 16
- ⑲ INSTALL 30" STORM SEWER PIPE - 16 TRENCH EXCAVATION 50 CU. YD.
- ⑳ PLACE CLASS 100 RIP RAP, SEE DETAIL ON SHIT. 2A2 - 8 CU. YD.
- ㉑ REMOVE CONC. WALK AND BASE - 9 SQ. YD.
- ㉒ REMOVE ASPH CONC. WALK AND BASE - 12
- ㉓ PLACE TOP SOIL, SEE DETAIL ON SHIT. 2A3 - 30 CU. YD.
- ㉔ CONSTRUCT CONC. DRIVEWAY, SEE STD. DWG. RD750
- ㉕ CONSTRUCT ASPHALT APPROACH - 5 EA.
- ㉖ CONSTRUCT CONC. SIDEWALK RAMPS, SEE STD. DWGS. RD755 AND RD760 - 4 EA.
- ㉗ CONSTRUCT SEGMENTAL RETAINING WALL, SEE DETAILS ON SHIT. 2A3 - 250 SQ. FT.
- ㉘ PLACE FILL AND AGG. BASE FOR TEMP WALK, SEE DETAIL ON SHIT. 2A2
- ㉙ REMOVE EXISTING BRIDGE AND CONSTRUCT CONC. BRIDGE, SEE SHEETS 5-9
- ㉚ CONSTRUCT TEMP BRIDGE FOR PED PATH, SEE SHIT 10
- ㉛ CONNECT DITCH, MATCH EXISTING SECTION
- ㉜ CONSTRUCT ROAD CONNECTION, SEE DETAIL ON SHIT. 2A2
- ㉝ CONSTRUCT DITCH AT TOE OF SLOPE
- ㉞ INSTALL 36" STORM SEWER PIPE - 77.6 TRENCH EXCAV. = 72 CU. YD.
- ㉟ INSTALL 4" DUCTILE IRON FORCE MAIN, SEE HANGER DETAIL ON SHIT. 7 - 231
- ㊱ TRENCH EXCAV. = 43 CU. YD.
- ㊲ INSTALL 10" DUCTILE IRON POTABLE WATER PIPE, SEE BRIDGE HANGER DETAIL ON SHIT. 7 - 116
- ㊳ TRENCH EXCAV. = 11 CU. YD.
- ㊴ CONNECT NEW LINE TO EXISTING
- ㊵ INSTALL J BOX W/ 1 1/2" CONDUIT AND PULL STRING

Marion County Dept of Public Works
 Engineering
 1500 NE Oregon St., Astoria, Oregon 97103
MILL CREEK BR 1501
DENVER ST - MARION RD
BRIDGE REPLACEMENT

Date: 12/18/03
 Drawn: J
 Scale: 1"=40'
 Sheet: 4/A

PROFILE



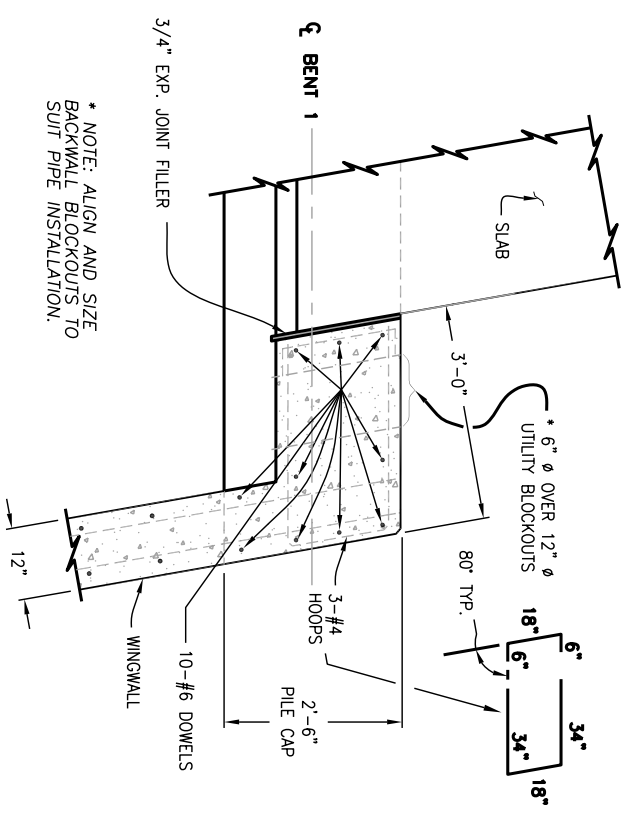
NOTE:
WATER AND SEWER PRESSURE
PIPES NOT SHOWN

Marion County Dept. of Public Works
Engineering

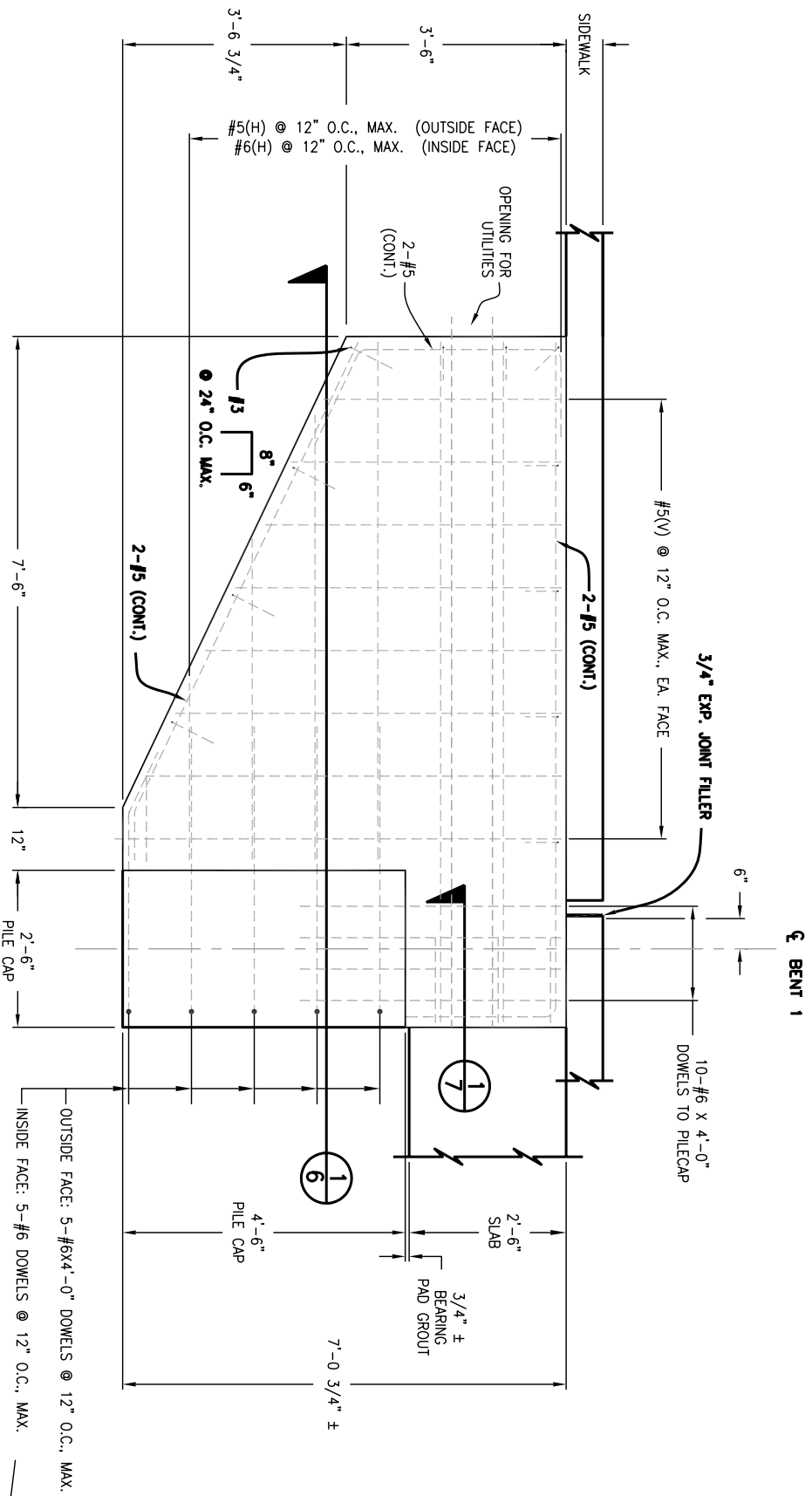
MILL CREEK BR 1501
DENVER ST - MARION RD.
BRIDGE REPLACEMENT

DATE: 02/12/03
DRAWN BY: [Name]
CHECKED BY: [Name]
SCALE: 1"=40'

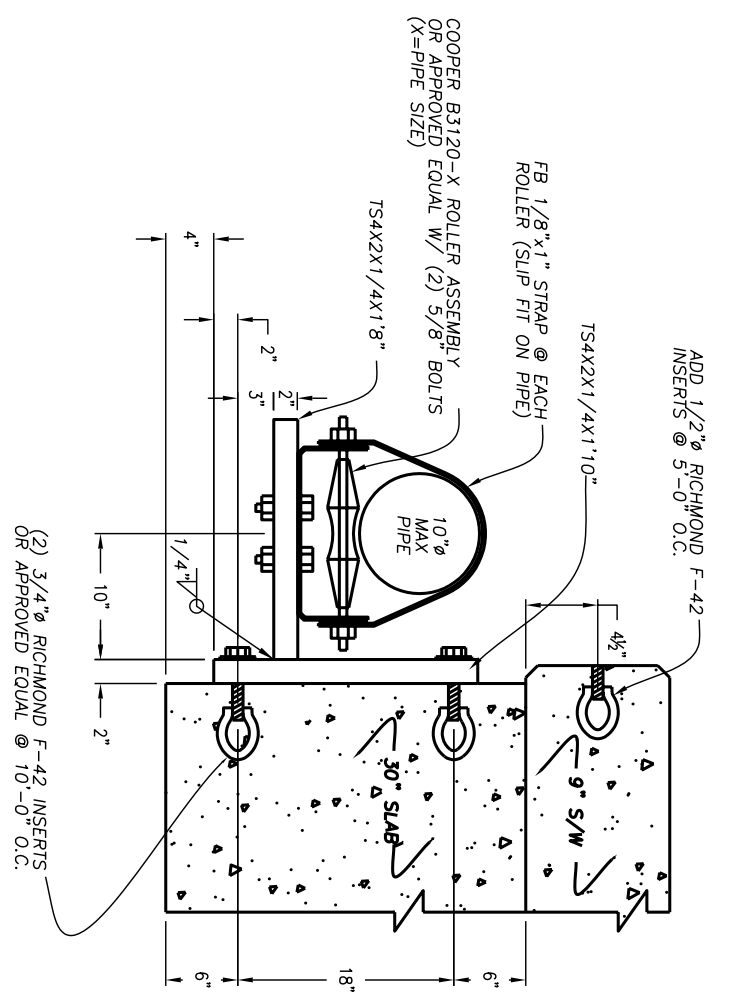
DATE: 02/12/03
DRAWN BY: [Name]
CHECKED BY: [Name]
SCALE: 1"=40'



SECTION 1
(TYPICAL)
SCALE: 3/4" = 1'-0"

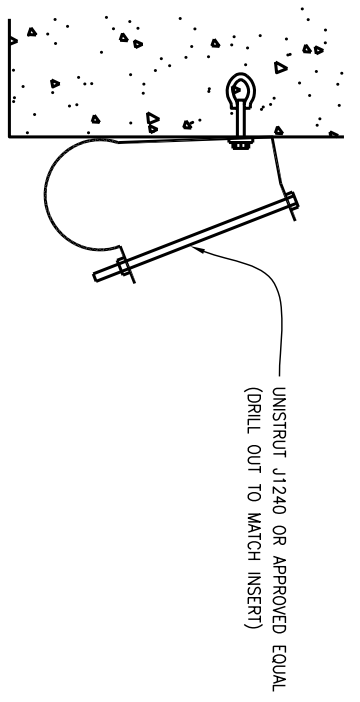


TYP. WINGWALL ELEVATION
SCALE: 3/4" = 1'-0"

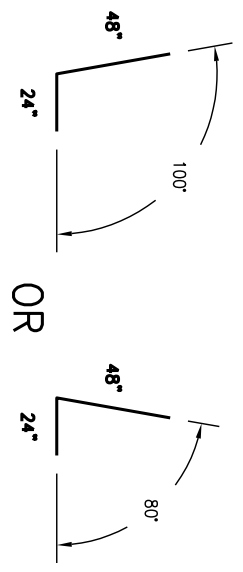


WATER LINE HANGER (7 REQ'D)
NO SCALE

NOTES:
STEEL: F_y = 36 KSI; HOT-DIP GALVANIZE AFTER FABRICATION.
WELDS: E70XX ELECTRODES.
BOLTS: ASTM A307 OR BETTER, ZINC PLATED OR GALVANIZED (CHASE THREADS).



SEWER FORCE MAIN HANGER (7 REQ'D)
NO SCALE



Marion County Dept. of Public Works
Engineering

MILL CREEK BRIDGE #1501
WINGWALL DETAILS

7

Date: 8/08	Eng./DC	Date: 12-16-02	Revised: 01/19/05
Reviewed By: Survey	Drawn:	Drawn: LJB	SCALE: 3/4" = 1'-0"
Project:	Sheet:	Rev: 05 8/02	W/1/5 8/02