

# Eola Bend Park

A new addition to the County Parks system

Would it surprise you to learn that a new, sixty-acre park will open this spring on the Willamette River? Eola Bend Park, is located within easy biking distance of Salem and will be the newest addition to Marion County's Natural Heritage Parks Program. Marion County Parks is adding this new park to its system through a partnership with Environmental Services solid waste program. Visitors will have access to the new park area from several of the Minto-Brown Park trailhead parking areas. No public access to the park will be available through the Browns Island Landfill Site.

Salem's Minto-Brown Island Park path (shown here) will connect to Eola Bend Park — photo by Ken Ray

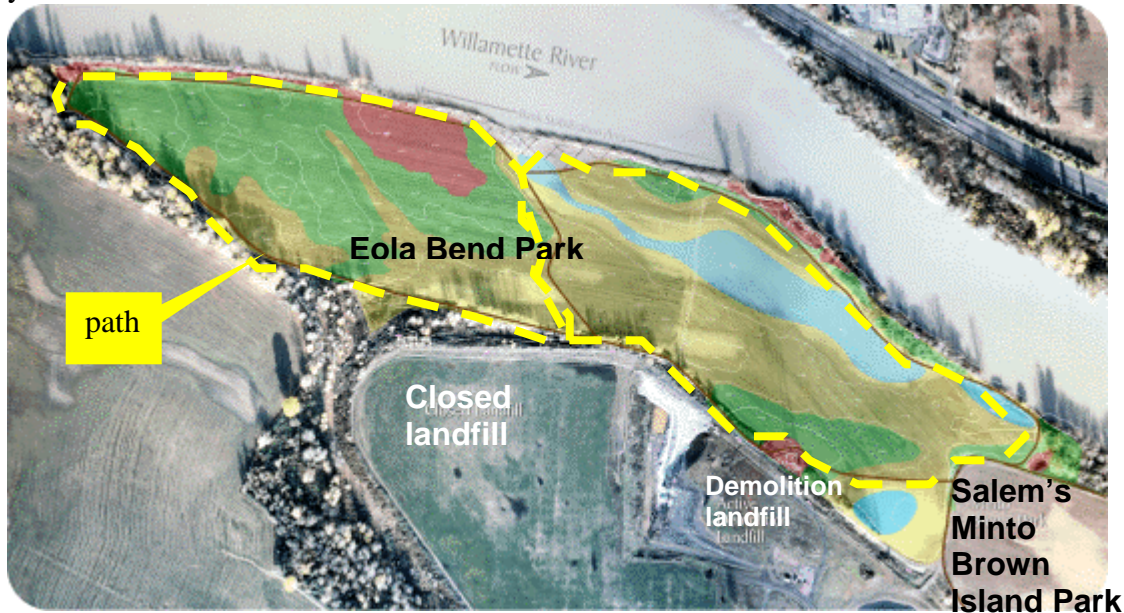


Volunteers helping with the restoration

The park will feature:

- Direct connection with Salem's Minto-Brown Island Park paths
- Views of the Willamette River
- Wildlife viewing of osprey, bald eagles, herons, waterfowl, and other river-dwellers
- A 60-acre restoration, featuring over 45,000 native plants
- A year around footpath
- Interpretive signs describing restoration efforts and the Willamette River

The site, located between the old Browns Island landfill and the Willamette River, was badly eroded cropland until the Solid Waste staff enrolled it in the Conservation Reserve Enhancement Program. Through this federal and state program, hundreds of volunteers planted 45,000 native trees and shrubs along the river. These native plants will help control erosion, reduce flood damage to the property, and provide critical wildlife habitat along the Willamette River. A footpath, made from recycled asphalt grindings, loops through the park and provides visitors year around access.





Volunteers helping with the restoration