

# JUSTICE REINVESTMENT GRANT PROGRAM APPLICATION

2023 - 2025



For further information:

Marion County  
Public Safety Coordinating Council Chair  
Commissioner Colm Willis  
555 Court St. NE | P.O. Box 14500  
Salem, OR 97309  
(503) 588-5212 Office | (503) 588-5237 Fax  
[cwillis@co.marion.or.us](mailto:cwillis@co.marion.or.us)

## TABLE OF CONTENTS

Justice Reinvestment Initiative 2021-23 Performance Portfolio .....	3
2023-2025 Preliminary Justice Reinvestment Application .....	19
Cover Page.....	19
Evaluation of Success and Challenges to Local Justice Reinvestment Initiative .....	20
Proposed Grant Programming.....	20
Program One: Prison Diversion Program.....	20
Program Two: Transition from Jail to Community (TJC) Program.....	22
Program Three: Marion County Adult Specialty Courts .....	24
Program Four: Link Up.....	26
Program Five: Student Opportunity for Achieving Results (SOAR) .....	28
Program Six: De Muniz Resource Center .....	30
Program Seven: Transition Services/Housing .....	32
Program Eight: Substance Use Treatment.....	34
Program Nine: Peer Support Program.....	36
Eligibility Requirements .....	39
Planning and Implementation .....	39
Statements of Commitment and Letters of Support .....	41
Finalization of Formula Grant Application.....	50
Victim Services Provider Applications .....	52
2023-2025 Competitive Grant Application .....	58
Budget Projection Sheets.....	65



## INTRODUCTION

---

The Oregon Criminal Justice Commission administers Oregon's Justice Reinvestment Initiative. House Bill 3194 (2013) requires that applications be submitted by each county's local public safety coordinating council. The Marion County Public Safety Coordinating Council has been working diligently to assess local needs and services, develop criteria, review funding requests, prioritize programs, and prepare the 2023-25 grant application. Marion County received \$5,104,232.48 in formula and supplemental grant funding in the 2021-23 biennium for nine programs. In 2022, the Criminal Justice Commission opened two additional funding opportunities for which Marion County received an additional \$132,538.42 in funds. This brief provides a snapshot of performance over the past 18 months and makes recommendations for which programs should be included in the application for the 2023-25 biennium.

Due to changes in the grant application process, counties will apply for justice reinvestment funds in two phases: During the first phase, counties will provide information on eligibility requirements, proposed grant programming, planning and implementation, letters of support, and statements of commitment. The Criminal Justice Commission will provide counties with feedback on the preliminary applications in July 2023 and release information on 2023-25 funding allocations. At that time, counties will submit the second application detailing any changes to programming from the initial application as well as the program budget. This is also when counties will submit applications for victim services and competitive (formerly known as supplemental) funding.

## OVERVIEW

---

Oregon's Justice Reinvestment Initiative supports the following goals: (1) Reduce recidivism while protecting public safety and holding offenders accountable; and (2) Decrease the county's utilization of imprisonment in a Department of Corrections institution while protecting public safety and holding offenders accountable.

***In order to be considered for justice reinvestment funding in 2023-25, a program must: 1) Assess populations served by JRI funding; 2) Serve offenders charged with or convicted of property, drug, or driving offenses; 3) Consider and accept short-term transitional leave candidates as appropriate; 4) Provide assistance to clients enrolling in the Oregon Health Plan and utilize treatment providers that accept the Oregon Health Plan; and 5) Work towards imbedding equity throughout the county's criminal justice system.***

## 2021-23 SUMMARY

PROGRAM/SERVICE	2021-23 TARGET NUMBER OF CLIENTS SERVED	2021-23 CLIENTS SERVED THROUGH 12/31/2022	2021-23 APPROVED ALLOCATION	2021-23 PROJECTED EXPENDITURES
SB 416 Prison Diversion Program	60	27	\$1,677,688	\$1,677,688
Downward Departure Supervision Program	<i>Not specified</i>	135	\$526,883	\$526,883
Transition from Jail to Community (TJC) Program	600	1,209	\$811,147	\$811,147
Marion County Adult Specialty Courts	120	TBD	\$20,000	\$20,000
Link Up	60	53	\$105,000	\$105,000
Student Opportunity for Achieving Results	60	91	\$414,140	\$414,140
De Muniz Resource Center	750	983	\$270,000	\$270,000
Transition Services (Housing)	85	164	\$233,388	\$233,388
Substance Use Treatment	400	433	\$304,960	\$304,960
Peer Support Program	50	61	\$105,000	\$105,000
Equity Action Plan Consultant (Capacity building funding Aug. '22)	N/A	N/A	\$35,000	\$35,000
Gender Responsive Caseload for Women (Supplemental funding October 2022)	N/A	N/A	\$97,538	\$97,538
Victim Services (required 10%)	<i>Not specified</i>	N/A	\$510,423.56	\$510,423.56
Statewide Evaluation (required 3%)	N/A	N/A	\$125,604	Remit to CJC
Total			\$5,236,771	\$5,236,771

## PRISON USAGE AND RECIDIVISM

The following charts illustrate how Marion County's strategies have achieved Oregon's Justice Reinvestment goals. Support for adequate funding has been instrumental to the success of the Justice Reinvestment Initiative (JRI). Within Marion County alone, JRI has allowed us to expand and enhance prison diversion and reentry programs. From November 2021 through November 2022, this resulted in a decrease in our prison utilization by 5,068 months compared to the historical baseline. In addition to reducing Marion County's overall prison bed usage, Marion County has seen a 71% reduction in the number of Measure 57 property crime probation revocations and a 57% reduction in the number of drug crime revocations from 2014 - 2021. The magnitude of these reductions was made possible through evidence-based program selection and design.

Since the implementation of evidence-based practices as required through Senate Bill 267 (2003), Marion County has seen an overall downward trend in recidivism as it relates to new arrest, new conviction, and/or new incarceration of community corrections clients supervised for property, drug, and driving offenses.

The arrest rate for the first cohort of 2019 was 42.5% (compared to 48.1% statewide), the conviction rate was 34.0% (compared to 37.2% statewide), and the incarceration rate was 15.2% (compared to 12.4% statewide).

Chart 1: Marion County One Year Rolling Sum of Prison Usage Compared to Historical Baseline

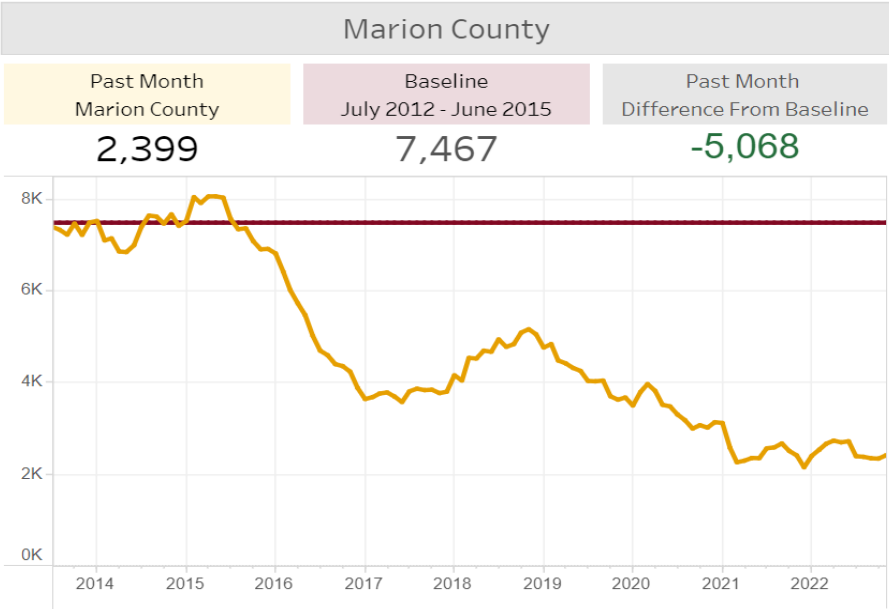
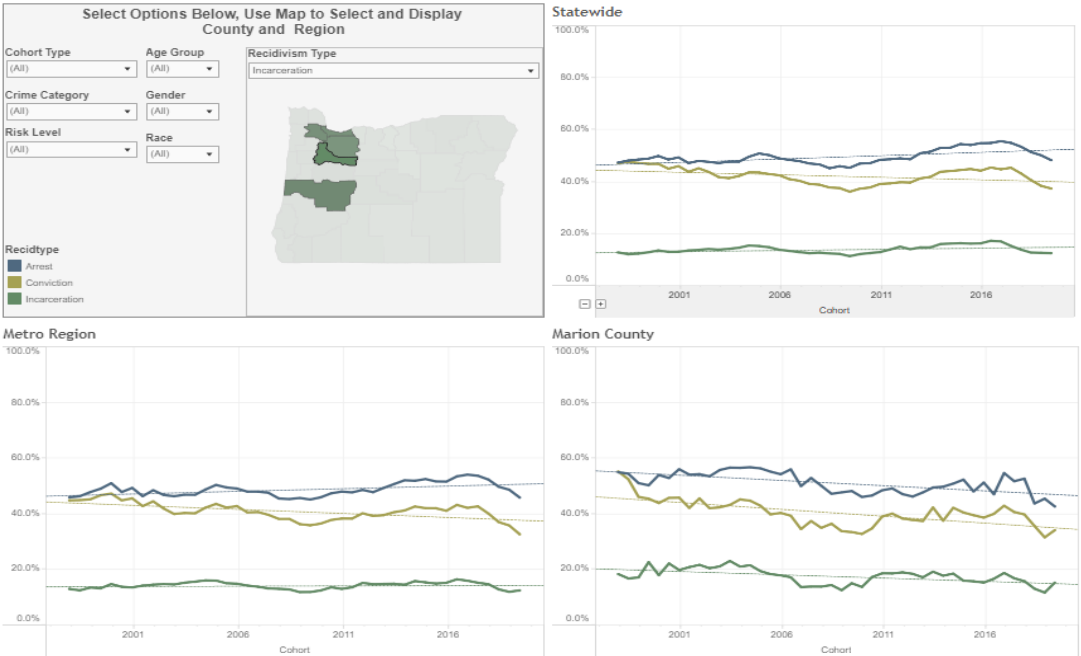


Chart 2: Marion County Recidivism Rates



Statewide

Metro Region

Marion County

## SB 416 SUPERVISION PROGRAM

**Population Served:** Non-violent property and drug offenders with medium-high criminogenic risks factors, who have historically been sentenced to state prison.

Annual Target Number of New Cases to be Served	Number of New Cases Through 12/31/2022
60	27

**Program Description:** The Senate Bill 416 Prison Diversion Program develops and implements evidence-based strategies to improve probationer supervision and reduce recidivism. An evidence-based sentencing program employing risk/needs assessment, the program works in partnership with the District Attorney's Office and the courts; provides evidence-based cognitive, motivation, substance use treatment and mentoring services; and ensures coordinated delivery of client services through the appropriate level of case management.

**Grant Funds:** Justice Reinvestment funds support a 1.0 FTE treatment counselor and 1.0 FTE professional mentor at Bridgeway Recovery Services, 2.0 FTE Parole and Probation Deputies, a Deputy District Attorney, supplies, and funding for five jail beds. Total 2021-23 allocation is \$1,120,364 from JRI formula grant funding and \$557,323 from supplemental grant funding.

Metrics, variables, or data points used to assess program	2021-22 FY				2022-23 FY	
	JUL-SEPT 2021	OCT-DEC 2021	JAN-MAR 2022	APR-JUN 2022	JUL-SEPT 2022	OCT-DEC 2022
Number of new individuals sentenced to SB 416 program	2	2	3	5	7	8
Number of new and existing individuals engaged in substance use treatment	7	8	8	10	16	17
Number of clients successfully completing substance use treatment	0	0	0	0	0	0
Number of individuals revoked for new crimes	0	0	1	0	0	0
Number of individuals revoked for technical violations	0	0	0	0	0	0

**Analysis:** As of December 2021, supervising the clients sentenced to the SB416 program during the 21-23 biennium in the community translates to 172 prison months avoided. The primary substance use treatment provider for the program has been evaluated using the Correctional Program Checklist and was determined to have "very high" adherence to evidence-based practices.

## DOWNWARD DEPARTURE PRISON DIVERSION PROGRAM

**Population Served:** Offenders with medium-high criminogenic risks factors, who have historically been sentenced to state prison.

Annual Target Number of New Cases to be Served	Number of New Cases Through 12/31/2022
<i>Not established</i>	135

**Program Description:** The Downward Departure Supervision Program develops and implements evidence-based strategies to improve probationer supervision and reduce recidivism. An evidence-based sentencing program employing risk/needs assessment, the program works in partnership with the District Attorney's Office and the courts; provides evidence-based cognitive, motivation, substance use treatment and mentoring services; and ensures coordinated delivery of client services through the appropriate level of case management.

**Grant Funds:** Justice Reinvestment funds support 2.0 FTE Parole and Probation Deputies. Total 2021-23 allocation is \$258,514 from JRI funding and \$268,369 from supplemental funding.

Metrics, variables, or data points used to assess program	2021-22 FY				2022-23 FY	
	JUL-SEPT 2021	OCT-DEC 2021	JAN-MAR 2022	APR-JUN 2022	JUL-SEPT 2022	OCT-DEC 2022
Total number of new individuals placed in downward departure supervision program a	26	24	24	29	21	11
Number of individuals receiving full pre-sentence assessment	1	2	0	0	0	3
Number of individuals placed in program post-sentencing	25	22	24	29	21	8
Number of individuals revoked for new crimes	1	0	0	0	1	0
Number of individuals revoked for technical violations	0	0	1	1	0	0

**Analysis:** As of December 2021, supervising the clients sentenced to the Downward Departure Supervision program during the 21-23 biennium in the community translates to 1,352 prison months avoided. Individuals are placed in the program one of two ways: they are referred by the District Attorney's Office pre-sentencing for assessment or, if the individual has already received a downward dispositional departure and been placed on community supervision, if during the intake process they are determined to be appropriate, they are placed in the program.

## TRANSITION FROM JAIL TO COMMUNITY (TJC) PROGRAM

**Population Served:** Medium-high risk men and women housed at the Marion County Transition Center serving either a Marion County sentence or a structured sanction.

Annual Target Number of New Individuals to be Served	Number of Individuals Served Through 12/31/2022
600	1,209

**Program Description:** Utilizing the Transition from Jail to Community (TJC) model developed by the National Institute of Corrections, the goal of the TJC Program is to reduce the number of individuals returning to jail by providing targeted transition planning and pre-release services, including cognitive skills classes, to Adults in Custody (AIC) at the Marion County Transition Center.

**Grant Funds:** Justice Reinvestment funds support two deputy positions at the Transition Center (a Transition Center counselor and a Transition Center Deputy), 1.0 FTE cognitive skills facilitators from The Pathfinder Network, and supplies for the Transition Center. Total 2021-23 allocation is \$811,147.

Metrics, variables, or data points used to assess program	2021-22 FY				2022-23 FY	
	JUL-SEPT 2021	OCT-DEC 2021	JAN-MAR 2022	APR-JUN 2022	JUL-SEPT 2022	OCT-DEC 2022
Number of individuals attending at least one service	66	75	138	224	343	363
Number of individuals completing a transition plan	11	4	12	15	14	7
Number of individuals attending cognitive skills class	41	60	45	68	32	42

**Analysis:** The Transition Center provides housing for up to 144 minimum custody AIC who are serving sanctions imposed by their probation/parole officer or serving sentences imposed by the judicial system. The mission of the Transition Center is to provide just and humane care for persons incarcerated at the center by providing a positive, rehabilitative environment. The goal of the TJC Program is to reduce the number of individuals returning to jail by providing targeted transition planning and pre-release services, including cognitive skills classes, to AIC at the Marion County Transition Center.



## MARION COUNTY ADULT SPECIALTY COURTS

**Population Served:** Non-violent misdemeanor and felony drug offenders who possess medium-high criminogenic risk factors.

Annual Target Number of New Cases to be Served	Number of New Cases Through 12/31/2022
120	TBD

**Program Description:** Marion County's adult specialty courts include Adult Drug Court, Veterans Treatment Court, Mental Health Court, and Fostering Attachment Treatment Court. Each specialty court is designed to facilitate treatment and rehabilitation. The programs combine court concepts with integrated human services to provide meaningful interventions to these individuals and their families.

**Grant Funds:** Justice Reinvestment funds provide program supports in the form of client rental assistance (for up to 90 days) and vouchers redeemable for job/interview clothing. Total 2021-23 allocation is \$20,000.

Metrics, variables, or data points used to assess program	2021-22 FY				2022-23 FY	
	JUL-SEPT 2021	OCT-DEC 2021	JAN-MAR 2022	APR-JUN 2022	JUL-SEPT 2022	OCT-DEC 2022
Number of Adult Drug Court participants receiving housing support	0	4	0	0	0	3
Number of Veteran's Court participants receiving housing support	0	0	0	0	0	0
Number of Mental Health Court participants receiving housing support	0	0	0	0	0	0
Number of Fostering Attachment Court participants receiving housing support	0	0	1	0	2	4

NOTE: To date, vouchers for job/interview clothing have not been utilized for any participants.

**Analysis:** Participants in all of Marion County's adult specialty courts undergo an intense regimen of substance use and/or mental health treatment, case management, drug testing, and probation supervision while reporting to regularly scheduled status hearings before a judge. As participants engage in the specialty court process, having safe and supportive housing can be crucial to program success. Supports provided through JRI help participants access and maintain housing.

## LINK UP

**Population Served:** Medium-high risk males and females with co-occurring substance use and mental health disorders who are releasing from prison to Marion County.

Annual Target Number of New Cases to be Served	Number of New Cases Through 12/31/2022
60	53

**Program Description:** Link Up provides mentoring services that support successful reentry for clients with co-occurring disorders. Professional mentors contact individuals four months prior to release from custody and help clients transition to outpatient treatment services in the community. Mentors continue to support clients post release, including the duration in which clients receive substance use and mental health treatment.

**Grant Funds:** Justice Reinvestment funds support 1.0 FTE mentor at Bridgeway Recovery Services. Total 2021-23 allocation is \$105,000.

Metrics, variables, or data points used to assess program	2021-22 FY				2022-23 FY	
	JUL-SEPT 2021	OCT-DEC 2021	JAN-MAR 2022	APR-JUN 2022	JUL-SEPT 2022	OCT-DEC 2022
Number of new participants	0	0	4	22	15	8
Number of individuals meeting with mentors while in custody	0	0	3	8	14	13

**Analysis:** In 2019-21, JRI funding supported a mentor position for Link Up. Oregon Health Plan and other treatment program funding was leveraged to support outpatient treatment services for participants upon release. As a result, in 2021-23, Link Up services focused on pre-release mentor services for medium-high risk males with co-occurring disorders releasing from Department of Corrections facilities. The Link Up began in its current form in January 2022 upon execution of a new contract. During the 2021-23 biennium, based on local client need, the program was expanded to include medium-high risk females and those releasing from the Marion County Jail/Transition Center in addition to Department of Corrections facilities.

## STUDENT OPPORTUNITY FOR ACHIEVING RESULTS (SOAR)

**Population Served:** Male and female clients with substance use issues and medium-high criminogenic needs. Because of local funding parameters, SOAR participants must have a history of or a current property crime charge.

Annual Target Number of New Cases to be Served	Number of New Cases Through 12/31/2022
60	91

**Program Description:** SOAR is an intensive program delivered on the Chemeketa Community College campus. While in SOAR, individuals participate in evidence-based cognitive and motivational programs, relationship skills classes, mentoring, and substance use treatment. Interventions are delivered in a group setting.

**Grant Funds:** Justice Reinvestment funds support 2.0 FTE Chemeketa Community College employment staff that serve on the SOAR program team and 0.14 FTE Program Coordinator. Total 2021-23 allocation is \$414,140.

Metrics, variables, or data points used to assess program	2021-22 FY				2022-23 FY	
	Cohort 37	Cohort 38	Cohort 39	Cohort 40	Cohort 41	Cohort 42
Number of clients enrolled in program	10	13	18	18	16	16
Number of clients successfully completing program	9	6	11	14	6	7

**Analysis:** Recidivism data for the first 31 cohorts of the SOAR program indicate the overall program is effective at reducing future criminal behavior. When compared to other high-risk male PPS clients on supervision in Marion County, SOAR graduates were 30.3% less likely to be arrested for a new offense, 12.7% less likely to be convicted of any new crimes (misdemeanor or felony), 12.6% less likely to be convicted of a new felony, and 8.5% less likely to have a new incarceration. The program has been evaluated using the Correctional Program Checklist and was determined to have “very high” adherence to evidence-based practices.

In an effort to expand the number of gender specific services offered to female clients on community supervision, the first female SOAR cohort began in March 2023.

## DE MUNIZ RESOURCE CENTER

**Population Served:** Post-prison supervision and probation clients.

Annual Target Number of New Cases to be Served	Number of New Cases Through 12/31/2022
750	983

**Program Description:** The De Muniz Resource Center is a one-stop center designed to improve access to resources and provide direct services to individuals supervised by Marion County Community Corrections Division. The Center is located on site at the Marion County Transition Center and is operated by Mid-Willamette Valley Community Action Agency. The Center provides assistance in the form of one-on-one consultations, coaching on how to navigate and access local resources, and referrals for employment, education, obtaining identification, housing, child and family services, transportation, basic needs, legal issues, and health/mental health needs.

**Grant Funds:** Justice Reinvestment funds support a portion of personnel costs needed to adequately operate the center. Total 2021-2023 allocation was \$270,000.

Metrics, variables, or data points used to assess program	2021-22 FY				2022-23 FY	
	JUL-SEPT 2021	OCT-DEC 2021	JAN-MAR 2022	APR-JUN 2022	JUL-SEPT 2022	OCT-DEC 2022
Number of individuals accessing individual sessions with a navigator	0	156	79	67	99	86
Number of individuals receiving education/employment assistance	43	2	25	31	37	32
Number of individuals attending workshops	83	35	110	90	52	30
Number of individuals attending Oregon Health Plan sign-up	94	4	126	112	151	129

**Analysis:** The De Muniz Resource Center is a one-stop center for reentry clients to access resources, including those in custody at the Marion County Transition Center and individuals in the community. De Muniz Resource center staff offer individual appointments for both Adults In Custody (AIC) at the Transition Center and community clients to address barriers to successful reentry such as housing and employment. In addition, the De Muniz Resource Center provides a variety of in-house classes and workshops, which focus on topics such as cognitive skills, employment resources, financial education, parenting skills, tenant education, GED tutoring, and substance use support groups. The Transition from Jail to Community (TJC) Program refers AIC for both individual assistance and classes at the De Muniz Resource Center for assistance preparing for release.

# TRANSITION SERVICES (HOUSING)

**Population Served:** Medium-high risk clients on probation or post-prison supervision in need of pro-social and stable housing.

Annual Target Number of New Cases to be Served	Number of New Cases Through 12/31/2022
85	164

**Program Description:** Marion County Sheriff’s Office Community Corrections Division provides transitional housing stipends for up to 90 days. Each one-month stipend is estimated at \$400.

**Grant Funds:** Justice Reinvestment funds support up to 90 days of housing assistance for 60 new clients per year. Total 2021-23 allocation is \$233,388.

Metrics, variables, or data points used to assess program	2021-22 FY				2022-23 FY	
	JUL-SEPT 2021	OCT-DEC 2021	JAN-MAR 2022	APR-JUN 2022	JUL-SEPT 2022	OCT-DEC 2022
Number of housing stipends given	0	20	19	38	60	28
Number of individuals receiving housing stipends	0	15	13	30	42	23

**Analysis:** Housing is essential for community stability. Without housing, clients cannot focus on treatment and other remediation services. These funds support transitional housing stipends for rental assistance for medium-high risk clients on probation or post-prison supervision. This funding has been crucial to providing pro-social stability for community corrections clients. Based on the availability of funding from other sources, no JRI funds were used for housing subsidies from July-September 2021.

## SUBSTANCE USE TREATMENT

**Population Served:** Clients supervised by the Marion County Sheriff's Office who are medium-high risk, are in need of substance use treatment, and do not qualify for other Marion County Reentry Initiative treatment programs.

Annual Target Number of New Cases to be Served	Number of New Cases Through 12/31/2022
400	433

**Program Description:** A minimum of 200-260 hours of cognitive-based services are provided to the target population. All services are directed at enhancing client motivation, addressing addiction and criminogenic risk factors, and providing the behavioral skills to lead a clean and sober lifestyle.

**Grant Funds:** Justice Reinvestment funds support the following positions at Bridgeway Recovery Services: 2.0 FTE Certified Drug and Alcohol Counselors and 0.5 FTE Professional Mentor. Total 2021-23 allocation is \$304,960.

Metrics, variables, or data points used to assess program	2021-22 FY				2022-23 FY	
	JUL-SEPT 2021	OCT-DEC 2021	JAN-MAR 2022	APR-JUN 2022	JUL-SEPT 2022	OCT-DEC 2022
Number of individuals attending substance use treatment	180	178	174	174	174	148
Number of individuals successfully completing substance use treatment within the reporting period	30	10	27	16	14	30

**Analysis:** Substance use treatment allows clients who are not eligible for more intensive wraparound services, or who are unable to access programs due to limited program capacity, receive treatment through Bridgeway Recovery Services. These services provide a safety net for clients needing substance use treatment. This program increases treatment accessibility for clients who are pending OHP approval or are ineligible for OHP. On average, participants are enrolled in OHP within 27 days of being referred for services. The program has been evaluated using the Corrections Program Checklist and was determined to have "very high" adherence to evidence-based practices.

## PEER SUPPORT PROGRAM

**Population Served:** Clients supervised by the Marion County Sheriff's Office who possess medium-high risk factors and belong to historically underserved communities.

Annual Target Number of New Cases to be Served	Number of New Cases Through 12/31/2022
50	61

**Program Description:** The peer support program helps community corrections clients navigate local resources that promote successful reentry and completion of supervision. Peer support specialists provide a variety of services including individual support, action planning, service navigation, peer support groups, classes, and workshops.

**Grant Funds:** Justice Reinvestment funds support 1.0 FTE peer support specialist from The Pathfinder Network. Total 2021-23 allocation is \$105,000.

Metrics, variables, or data points used to assess program	2021-22 FY				2022-23 FY	
	JUL-SEPT 2021	OCT-DEC 2021	JAN-MAR 2022	APR-JUN 2022	JUL-SEPT 2022	OCT-DEC 2022
Number of individuals referred to program	0	0	18	50	52	36
Number of individuals participating in program	0	0	6	38	52	24
Number of peer support services provided	0	0	7	219	179	120

**Analysis:** The Peer Support Program launched in February 2022. POs and peer support specialists collaborate to develop an action plan for each client that is informed by the risk-need-responsivity framework. Validated risk-need assessments (the LS/CMI or WRNA) are used to identify medium-high risk individuals to participate in the program. The PO, peer support specialist, and client work in conjunction to develop an action plan that addresses the individual's highest risk-needs and how the client can work toward reducing their risk in those areas. The peer support specialist is available to assist the individual with accessing and engaging in community services that help reduce those risks. Peer support groups provided as part of the program utilize evidence-based curricula, such as Healing Trauma and Building Resilience.

## ADDITIONAL 2021-23 FUNDING OPPORTUNITIES

---

During the 2021-23 biennium, the Oregon Criminal Justice Commission provided two additional Justice Reinvestment funding opportunities to Oregon counties.

Marion County received funds during the biennium from both additional opportunities. Awarded funds must be expended prior to December 31, 2023 and are not programs included for consideration as part of the 2023-25 JRI application.

### **CAPACITY BUILDING GRANT**

**Description:** The Criminal Justice Commission set aside \$600,000 of Justice Reinvestment grant funding to create the Justice Reinvestment Capacity Building Grant. This grant was designed to help counties understand, build, and apply cultural responsiveness and equity in their existing Justice Reinvestment programs. Counties were eligible to apply for \$35,000 grants to develop an equity action plan for addressing individual and community needs.

Marion County was awarded a capacity building grant to contract with a consultant to help the Sheriff's Office Community Corrections Division identify gaps in services, training needs, and provide recommendations on engaging with underserved communities and increasing the provision of culturally responsive services. The Sheriff's Office is currently in the process of developing a contract for services with a consultant to develop the equity action plan.

### **2021-23 SUPPLEMENTAL FUNDING ROUND:**

**Description:** In October 2022, the Criminal Justice Commission authorized the release of a Supplemental Round of Justice Reinvestment Grant funding. These funds derived from underspent and unallocated Justice Reinvestment Funds and were awarded through a competitive process pursuant to Oregon Administrative Rule 213-060-0080. Marion County applied for, and was awarded, an additional \$97,538 in funds to create an additional gender specific caseload for medium-high risk women on community supervision.

Over the course of the past biennium, Marion County has continued to increase the number of gender specific services offered for to women. Supervision programs and strategies have long been designed for and targeted at male clientele often not addressing the gender specific risk and needs of female clients. Gender specific case management prioritizes practices that are relational, trauma-informed, strength-based, and culturally relevant. By providing services most relevant to female supervision clients (as opposed to gender neutral services), Marion County can maximize risk reduction, promoting public safety and reducing recidivism and reliance prison usage. Funds awarded during the supplemental round allow Marion County to increase service capacity in this area.



## 10% SET ASIDE FOR VICTIM SERVICES

---

Marion County's collaborative victim services strategy closes critical gaps in services and was unanimously supported by the Marion County Public Safety Coordinating Council. Funding of \$510,424 was shared in 2021-23 between two qualified nonprofit providers: Center for Hope and Safety and Liberty House.

Each provider is required to complete an annual report. The following include a sample of activities from the 2021-22 fiscal year reports.

### **CENTER FOR HOPE AND SAFETY (CHS)**

**Population Served:** Victims and survivors of domestic violence, sexual assault, stalking, and human trafficking.

**Program Description:** Justice Reinvestment funds support an Intake Coordinator, IT specialist, HR manager, Executive Director, and direct assistance for survivors (identification, gas cards, bus tickets, prescriptions, etc.).

#### **2021-22 FY Activities (1st Year):**

- CHS staff responded to more than 39,000 contacts to the program, another record for the agency. CHS Advocates continue to provide a 24/7 hotline in both English and Spanish.
- The Bilingual Intake Coordinator assists dozens of people in the office every day and is able to speak to the majority of those who enter the office in their preferred language.
- From July 2021-June 2022, the HR Manager facilitated the hiring of 15 individuals, 9 of whom are from BIPOC communities and 7 of whom are bilingual.
- The IT Advocate assisted clients with technology-related safety issues and maintains eight computers available for program participants to use as needed.

### **LIBERTY HOUSE**

**Population Served:** Children who have suffered physical abuse, sexual abuse or neglect and their families.

**Program Description:** Justice Reinvestment funds support six positions with the Hope and Wellness Program at Liberty House. The Hope and Wellness Program provides evidence based, trauma informed, mental health services including triage, assessments, individual, group, family, and crisis services for victims of abuse and neglect.

#### **2021-22 FY Activities (1st Year):**

- During FY 2021-22, the therapists supported by JRI funding saw 256 children. Approximately 68% of those children were under the age of 12. The Hope & Wellness Program helps children process their experiences, develop skills to regulate emotions, and rewire and repair brain connections affected by trauma.
- Liberty House allocated some of the grant funding to their bilingual therapist. One of the ways they help meet the needs of their clients is by providing services in the language they speak.
- Over the course of the pandemic, their therapists offered telehealth services to further reduce barriers to access created by transportation issues or limitations. Their therapists conducted over 450 telehealth sessions providing approximately 337 hours of counseling remotely.

## CONCLUSION

---

Based on the above information, it is recommended that the following nine programs be submitted for inclusion in Marion County's 2023-25 Justice Reinvestment application due May 25, 2023:

1. Downward Departure Supervision Program
2. Transition from Jail to Community Program
3. Marion County Adult Specialty Court Program Supports
4. Link Up
5. SOAR
6. De Muniz Resource Center
7. Transition Services (Housing)
8. Substance Use Treatment
9. Peer Support Program

In addition, it is recommended that Marion County apply for competitive (formerly known as supplemental) grant funding in September 2023 for the SB 416 prison diversion program.

The Oregon Criminal Justice Commission will release information on 2023-25 JRI funding allocations in July 2023. At that time, it is requested the Marion County Public Safety Coordinating Council review and affirm parameters for prioritizing the services to be included in the 2023-25 application. The following parameters were used to prioritize funding decisions in the 2021-23 biennium:

**Parameter 1:** Services considered for funding must be evidence based.

**Parameter 2:** Existing services funded with Justice Reinvestment funds and demonstrating results in achieving Justice Reinvestment goals will have highest priority for funding at current service level, i.e., allowing appropriate adjustments for cost of living and other personnel and materials costs needed to sustain the program in the upcoming year.

**Parameter 3:** If additional Justice Reinvestment funds become available, funds to fill gaps in or otherwise enhance existing services, or to create new services, will be considered equally, assuming Parameter 1 is met. The council will analyze the potential of each proposed new or enhanced service to achieve Justice Reinvestment goals.

**Parameter 4:** For worthy public safety programs not funded in the Justice Reinvestment plan, the council will explore alternative funding options, leverage community engagement, and assist partner organizations in seeking grants or other appropriations through letters of support and advocacy.

Based on the funding parameters approved by the Council, the Sheriff's Office will develop a recommended budget based on Marion County's funding allocation to submit to the Council for review and approval.



2023 - 2025  
PRELIMINARY  
JUSTICE REINVESTMENT APPLICATION

## COVER PAGE

---

**County**

Marion
--------

**Local Public Safety Coordinating Council (LPSCC) Chair Contact**

Name:	Colm Willis
Preferred Title (if other than Chair):	Commissioner
E-mail:	<a href="mailto:cwillis@co.marion.or.us">cwillis@co.marion.or.us</a>
Phone:	503-588-5212

**Primary Applicant Contact**

Name:	Jeff Wood
Organization:	Marion County Sheriff's Office
Title:	Undersheriff
Address:	100 High St. NE
City:	Salem
ZIP:	97301
E-mail:	<a href="mailto:jwood@co.marion.or.us">jwood@co.marion.or.us</a>
Phone:	503-588-6824

# EVALUATION OF SUCCESSES AND CHALLENGES TO LOCAL JUSTICE REINVESTMENT INITIATIVE

**Consult the Prison Usage Dashboard. If your county has seen an increase in prison usage over the past 12 months or if your prison usage is above your historic baseline, please identify local factors that may be contributing to the rise in prison usage.**

Marion County's prison usage over the last 12 months has remained below the historic baseline. Additionally, Marion County has seen a slight decrease in prison usage from January 2022 – January 2023.

**Consult the Recidivism Dashboard. If your county has seen an increase in recidivism (incarceration) during the last year of available data or if recidivism has risen since 2013, please identify local factors that may be contributing to the rise in recidivism.**

Marion County has seen an overall downward trend in recidivism (incarceration) since 2013, however, in the last 12 months, there has been a slight increase. The recidivism rate for cohort 2018-1 was 13.0%, while the recidivism rate for cohort 2019-1 is 15.2%. The impacts of the COVID-19 pandemic may have contributed to this increase. Instead of shutting down court proceedings, Marion County found alternative methods to continue operations at as close to normal levels as possible (by looking for alternative locations to hold court proceedings, holding settlement hearings at the Marion County Jail, etc.).

**Consult the Probation Racial Disparity Tool (sentencing). How does your entire Justice Reinvestment Grant Program contribute to the reduction of racial disparities (see dashboard), or disparities affecting other historically underserved communities?**

Prior to 2020, Marion County saw slight disparities in the number of Black and Latino men diverted to probation. By 2020-2021, both groups were at parity with White men. It is likely that this change is a result of the overall low sample size and legislative changes resulting from the passage of Ballot Measure 110. In 2021 and 2022, Marion County was at or below parity for men sentenced to probation for JRI crimes. During that same time, Marion County saw a slight disparity for Native American and Latina women. In 2022, there was one more Native woman and three more Latina women sentenced to probation than White women than would be expected if parity were present. Based on the low overall number of Native and Latina women who were not diverted to probation, Marion County has not developed a culturally specific program for each group. That being said, Marion County has worked over the last biennium to develop a more robust system of gender specific services that address the unique needs of women, including the intersectionality of gender and race/ethnicity. For example, the peer support program Marion County adopted in the 2021-23 biennium provides bilingual services in English and Spanish. The program also develops individualized case plans for each client, based on their unique circumstances.

## PROPOSED GRANT PROGRAMMING

**Please list the programs that you are proposing to fund with the 2023-25 Formula Justice Reinvestment Grant Funding.**

Program One	Prison Diversion Program
Program Two	Transition from Jail to Community (TJC) Program
Program Three	Marion County Adult Specialty Courts
Program Four	Link Up
Program Five	Student Opportunity for Achieving Results (SOAR)
Program Six	De Muniz Resource Center
Program Seven	Transition Services/Housing
Program Eight	Substance Use Treatment
Program Nine	Peer Support Program

**Program One: ~~Downward Departure Supervision~~Prison Diversion Program**

**Was this program a part of the 21-23 Justice Reinvestment funded programs?**

- ☒ Yes  
☐ No

**What Type of Program is this? (select one)**

- ☐ Pretrial  
☒ Downward Departure  
☐ Work Crew  
☐ Education Support

<div style="display: flex; flex-direction: column; gap: 5px;"> <input type="checkbox"/> Specialty Court</div> <div style="display: flex; flex-direction: column; gap: 5px;"> <input type="checkbox"/> Peer Mentoring</div> <div style="display: flex; flex-direction: column; gap: 5px;"> <input type="checkbox"/> Mental Health Treatment</div> <div style="display: flex; flex-direction: column; gap: 5px;"> <input type="checkbox"/> Drug and Alcohol Treatment</div> <div style="display: flex; flex-direction: column; gap: 5px;"> <input type="checkbox"/> Housing</div> <div style="display: flex; flex-direction: column; gap: 5px;"> <input type="checkbox"/> Restorative Justice</div> <div style="display: flex; flex-direction: column; gap: 5px;"> <input type="checkbox"/> Reentry</div> <div style="display: flex; flex-direction: column; gap: 5px;"> <input type="checkbox"/> Informed Sentencing Process</div>
<b>Briefly describe the proposed program and its purpose.</b> Three lines or less.
The <del>downward departure supervision</del> <u>prison diversion</u> program provides targeted supervision services to <del>prison diversion clients</del> <u>individuals who are diverted from prison by receiving either SB 416 or general downward departure probationary sentences</u> . The mission of the program is to reduce recidivism, protect the public, and hold clients accountable.
<b>Which of the goals of Justice Reinvestment Grant Program Does this program meet?</b> <i>[select all that apply]</i>
<input checked="" type="checkbox"/> Reduce prison usage while protecting public safety and holding individuals accountable.
<div style="margin-left: 20px;">             • If it reduces prison usage, briefly describe how below.           </div>
The downward departure supervision program reduces prison usage by diverting individuals who receive downward dispositional departure sentences from prison to community supervision.
<input checked="" type="checkbox"/> Reduce recidivism while protecting public safety and holding individuals accountable.
<div style="margin-left: 20px;">             • If it reduces recidivism, briefly describe how.           </div>
The <del>downward departure supervision</del> <u>prison diversion</u> program provides intensive community supervision and case management. Throughout the supervision process, validated risk assessments (the Level of Service/Case Management Inventory (LS/CMI) or Women's Risk Need Assessment (WRNA)) are used to develop individualized case plans that target criminogenic risks/needs. By reducing criminogenic risk, the program will help Marion County meet the goals of promoting public safety and reducing recidivism.
<b>What target population(s) is this program designed to serve? Make sure to include any underserved populations as defined in HB 3064 (2019) (racial and ethnic minorities; women; lesbian, gay, bisexual, transgender, queer and other minority gender identity communities; and other historically underserved communities).</b>
<b>Gender Identity</b> <i>[select all that apply]</i>
<input checked="" type="checkbox"/> Men
<input checked="" type="checkbox"/> Women
<input type="checkbox"/> Non-binary
<input type="checkbox"/> Not listed (please specify below)
<b>Race/Ethnicity (if it is a general eligibility program, select "all")</b> <i>[select all that apply]</i>
<input type="checkbox"/> Black or African American
<input type="checkbox"/> Asian or Pacific Islander
<input type="checkbox"/> Latino/a/e or Hispanic
<input type="checkbox"/> Native American or Alaska Native
<input type="checkbox"/> Middle Eastern or North African
<input checked="" type="checkbox"/> All
<b>Other Historically Underserved Communities</b> <i>[select all that apply]</i>
<input type="checkbox"/> LGBTQIA+
<input type="checkbox"/> Not listed (please specify below)
<b>Risk Level</b> <i>[select all that apply]</i>
<input checked="" type="checkbox"/> High
<input checked="" type="checkbox"/> Medium
<input type="checkbox"/> Low
<b>Which crime types does this program serve?</b> <i>[select all that apply]</i>
<input checked="" type="checkbox"/> Driving Offenses (generally ORS chapters 811, 813)
<input checked="" type="checkbox"/> Property Offenses (generally ORS chapters 164, 165)

☒ Drug Offenses (generally ORS chapters 471, 475)

☒ Other (please indicate ORS #s)

Accepts all cases with the exception of those listed below.

☒ There are exceptions to the crime type(s) selected above.

Individuals referred for consideration for an SB 416 sentence must have a history of repeat property and/or drug offenses and no history of domestic violence offenses (generally ORS chapter 163), sex offenses (generally ORS chapter 163,167), or arson (generally ORS chapter 164). Individuals referred for consideration for a general downward departure sentence cannot have current charges or extensive history of domestic violence offenses (generally ORS chapter 163), sex offenses (generally ORS chapter 163,167), arson (generally ORS chapter 164). Regardless of offense type, if the individual qualifies for another specialty caseload (e.g., mental health caseload, parents of children with DHS involvement, etc.), that will supersede the community supervision in the prison diversion program downward departure supervision program.

**Which, if any, assessments does this program use?**

(select all that apply)

☒ PSC

☒ LS/CMI

☐ URICA

☒ TCUDS

☐ ASUS

☒ WRNA

☐ VPRAI

☐ TCU CTS

☒ Other, please specify... Client Evaluation of Self and Treatment (Intake Version)

**Briefly describe how the above assessments are used in your program.** Example: The PSC is used as an initial triaging tool to determine whether or not a candidate for our downward departure program will receive a more detailed assessment (WRNA or LS/CMI) later.

The PSC is used as an initial screening tool for all individuals on supervision in Marion County to determine if an individual will receive a more detailed assessment. Individuals who do not score low on the PSC complete either a LS/CMI or WRNA. Individuals who are eligible for the program by being medium-high risk complete a TCU Drug Screen (TCU-DS) to screen for substance use issues and the TCU Client Evaluation of Self and Treatment Intake Version (TCU CEST-I) to provide the PO with responsivity information to help with case planning process.

**Has this program received a Corrections Program Checklist or the George Mason University Risk-Need-Responsivity Evaluation in the last 10 years?** [ select one]

☐ Yes

o If yes, when was the most recent review conducted?

o If yes, briefly describe the outcome of the most recent review and any steps to address the findings of the assessment.

☒ No

**Does this program provide culturally responsive services as defined in SB1510 (2022)?**

*("Culturally responsive service" means a service that is respectful of, and relevant to, the beliefs, practices, cultures and linguistic needs of diverse consumer or client populations and communities whose members identify as having particular cultural or linguistic affiliations by virtue of their place of birth, ancestry or ethnic origin, religion, preferred language or language spoken at home. A culturally responsive service has the capacity to respond to the issues of diverse communities and require knowledge and capacity at systemic, organizational, professional and individual levels of intervention.)*

☐ Yes

o If yes, briefly describe below.

☒ No

**Program Two: Transition from Jail to Community (TJC) Program**

**Was this program a part of the 21-23 Justice Reinvestment funded programs?**

☒ Yes

☐ No

**What Type of Program is this?** (select one)

☐ Pretrial

☐ Downward Departure

☐ Work Crew

☐ Education Support

☐ Specialty Court

<input type="checkbox"/> Peer Mentoring <input type="checkbox"/> Mental Health Treatment <input type="checkbox"/> Drug and Alcohol Treatment <input type="checkbox"/> Housing <input type="checkbox"/> Restorative Justice <input checked="" type="checkbox"/> Reentry <input type="checkbox"/> Informed Sentencing Process
<b>Briefly describe the proposed program and its purpose.</b> Three lines or less.
The goal of the Transition from Jail to Community (TJC) program is to reduce the number of individuals returning to custody by providing targeted release services and addressing immediate needs such as housing and referrals to community treatment.
<b>Which of the goals of Justice Reinvestment Grant Program Does this program meet?</b> <i>[select all that apply]</i>
<input type="checkbox"/> Reduce prison usage while protecting public safety and holding individuals accountable. • If it reduces prison usage, briefly describe how below.
N/A
<input checked="" type="checkbox"/> Reduce recidivism while protecting public safety and holding individuals accountable. • If it reduces recidivism, briefly describe how below.
One of the interventions available to community corrections deputies to respond to client violations are administrative sanctions to the Marion County Transition Center. Cognitive interventions provided through the TJC program often focus on the behaviors which resulted in an individual being in custody and then provide cognitive restructuring around those situations. As a result, interventions provided through the TJC program help individuals be accountable for their criminal behavior. In addition, by providing services and cognitive skills classes to individuals in custody that target criminogenic risks, the program promotes community safety and ultimately furthers Marion County's recidivism reduction efforts.
<b>What target population(s) is this program designed to serve? Make sure to include any underserved populations as defined in HB 3064 (2019) (racial and ethnic minorities; women; lesbian, gay, bisexual, transgender, queer and other minority gender identity communities; and other historically underserved communities).</b>
<b>Gender Identity</b> <i>[select all that apply]</i> <input checked="" type="checkbox"/> Men <input checked="" type="checkbox"/> Women <input type="checkbox"/> Non-binary <input type="checkbox"/> Not listed (please specify below)
<b>Race/Ethnicity</b> (if it is a general eligibility program, select "all") <i>[select all that apply]</i> <input type="checkbox"/> Black or African American <input type="checkbox"/> Asian or Pacific Islander <input type="checkbox"/> Latino/a/e or Hispanic <input type="checkbox"/> Native American or Alaskan Native <input type="checkbox"/> Middle Eastern or North American <input checked="" type="checkbox"/> All
<b>Other Historically Underserved Communities</b> <i>[select all that apply]</i> <input type="checkbox"/> LGBTQIA+ <input type="checkbox"/> Not listed (please specify) [text]
<b>Risk Level</b> <i>[select all that apply]</i> <input checked="" type="checkbox"/> High <input checked="" type="checkbox"/> Medium <input checked="" type="checkbox"/> Low
<b>Which crime types does this program serve?</b> <i>(select all that apply)</i> <input checked="" type="checkbox"/> Driving Offenses (generally ORS chapters 811, 813) <input checked="" type="checkbox"/> Property Offenses (generally ORS chapters 164, 165)

<input checked="" type="checkbox"/> Drug Offenses (generally ORS chapters 471, 475) <input checked="" type="checkbox"/> Other (please indicate ORS #s) Public Order Offenses (generally ORS chapter 162, 166, 167), Person Offenses (generally ORS chapter 163, 181) <input type="checkbox"/> There are exceptions to the crime type(s) selected above.
<b>Which, if any, assessments does this program use?</b> <i>(select all that apply)</i> <input checked="" type="checkbox"/> PSC <input checked="" type="checkbox"/> LS/CMI <input type="checkbox"/> URICA <input type="checkbox"/> TCUDS <input type="checkbox"/> ASUS <input checked="" type="checkbox"/> WRNA <input type="checkbox"/> VPRAI <input type="checkbox"/> TCU CTS <input type="checkbox"/> Other, please specify
<b>Briefly describe how the above assessments are used in your program.</b> <i>Example: The PSC is used as an initial triaging tool to determine whether or not a candidate for our downward departure program will receive a more detailed assessment (WRNA or LS/CMI) later.</i>
<u>The TJC program serves a variety of individuals, including those on community supervision as well as those serving local sentences. Individuals on community supervision have been assessed with the LS/CMI or WRNA, while individuals not on supervision serving local sentences receive the PSC.</u> The TJC program uses the results of available assessments such as the PSC, LS/CMI, and WRNA to help prioritize and plan services for individuals releasing from the Marion County Transition Center. The results of these assessments help dictate the resource referrals made (e.g., to substance use treatment) as well as to help triage which individuals receive in custody services when population levels at the Transition Center rise (e.g., priority is given to medium-high risk individuals). <u>-When population levels prevent the Transition Center from offering group services for low-risk individuals, services are offered on an individual basis.</u>
<b>Has this program received a Corrections Program Checklist or the George Mason University Risk-Need-Responsivity Evaluation in the last 10 years?</b> <i>[select one]</i>
<input type="checkbox"/> Yes • <b>If yes, when was the most recent review conducted?</b>
• <b>If yes, briefly describe the outcome of the most recent review and any steps to address the findings of the assessment.</b>
<input checked="" type="checkbox"/> No
This program is used to conduct one-on-one, individual meetings and individualized case transition plans. It also helps refer and connect clients to additional housing, employment, treatment, etc. services based on specific need.
<b>Does this program provide culturally responsive services as defined in SB1510 (2022)</b> <i>("Culturally responsive service" means a service that is respectful of, and relevant to, the beliefs, practices, cultures and linguistic needs of diverse consumer or client populations and communities whose members identify as having particular cultural or linguistic affiliations by virtue of their place of birth, ancestry or ethnic origin, religion, preferred language or language spoken at home. A culturally responsive service has the capacity to respond to the issues of diverse communities and require knowledge and capacity at systemic, organizational, professional and individual levels of intervention.)</i> <b>(Y/N)?</b> <i>[select one]</i>
<input type="checkbox"/> Yes ○ <i>If yes, briefly describe below.</i>
<input checked="" type="checkbox"/> No
<b>Program Three: Marion County Adult Specialty Courts</b>
<b>Was this program a part of the 21-23 Justice Reinvestment funded programs?</b>
<input checked="" type="checkbox"/> Yes <input type="checkbox"/> No
<b>What Type of Program is this?</b> <i>(select one)</i> <input type="checkbox"/> Pretrial <input type="checkbox"/> Downward Departure <input type="checkbox"/> Work Crew <input type="checkbox"/> Education Support <input checked="" type="checkbox"/> Specialty Court <input type="checkbox"/> Peer Mentoring <input type="checkbox"/> Mental Health Treatment



<input type="checkbox"/> Drug and Alcohol Treatment <input type="checkbox"/> Housing <input type="checkbox"/> Restorative Justice <input type="checkbox"/> Reentry <input type="checkbox"/> Informed Sentencing Process
<b>Briefly describe the proposed program and its purpose.</b> Three lines or less.
Marion County's adult specialty courts include Drug Court, Veterans Treatment Court, Mental Health Court, and Fostering Attachment Treatment Court. JRI provides program support in the form of housing subsidies and clothing vouchers for the Marion County adult specialty courts.
<b>Which of the goals of Justice Reinvestment Grant Program Does this program meet?</b> <i>[select all that apply]</i>
<input type="checkbox"/> Reduce prison usage while protecting public safety and holding individuals accountable. • If it reduces prison usage, briefly describe how.
<input checked="" type="checkbox"/> Reduce recidivism while protecting public safety and holding individuals accountable. • If it reduces recidivism, briefly describe how.
All of Marion County's adult specialty courts operate under a specialized model to provide court-directed supervision and mandated treatment to nonviolent individuals with substance use or mental health issues underlying their criminal behavior. The specialty courts utilize validated risk-needs assessments to develop individualized case plans designed to reduce criminogenic risk. By reducing criminogenic risk, the specialty courts help Marion County further the JRI goals of maintaining public safety and reducing recidivism.
<b>What target population(s) is this program designed to serve? Make sure to include any underserved populations as defined in HB 3064 (2019) (racial and ethnic minorities; women; lesbian, gay, bisexual, transgender, queer and other minority gender identity communities; and other historically underserved communities).</b>
<b>Gender Identity</b> <i>[select all that apply]</i>
<input checked="" type="checkbox"/> Men <input checked="" type="checkbox"/> Women <input type="checkbox"/> Non-binary <input type="checkbox"/> Not listed (please specify below)
<b>Race/Ethnicity</b> (if it is general eligibility program, select "all") <i>[select all that apply]</i>
<input type="checkbox"/> Black or African American <input type="checkbox"/> Asian or Pacific Islander <input type="checkbox"/> Latino/a/e or Hispanic <input type="checkbox"/> Native American or Alaska Native <input type="checkbox"/> Middle Eastern or North African <input checked="" type="checkbox"/> All
<b>Other Historically Underserved Communities</b> <i>[select all that apply]</i>
<input type="checkbox"/> LGBTQIA+ <input checked="" type="checkbox"/> Not listed (please specify below)
Veterans, families with children with DHS involvement, individuals with mental health disorders.
<b>Risk Level</b> <i>[select all that apply]</i>
<input checked="" type="checkbox"/> High <input checked="" type="checkbox"/> Medium <input checked="" type="checkbox"/> Low
<b>Which crime types does this program serve?</b> <i>(select all that apply)</i>
<input checked="" type="checkbox"/> Driving Offenses (generally ORS chapters 811, 813) <input checked="" type="checkbox"/> Property Offenses (generally ORS chapters 164, 165)

<input checked="" type="checkbox"/> Drug Offenses (generally ORS chapters 471, 475) <input checked="" type="checkbox"/> Other (please indicate ORS #s) Person Offenses (generally ORS chapter 163) and many public order offenses (generally ORS chapter 162, 166, 167) <input checked="" type="checkbox"/> There are exceptions to the crime type(s) selected above. Sex offenses (generally ORS chapter 163,167) and arson (generally ORS chapter 164)
<b>Which, if any, assessments does this program use?</b> <i>(select all that apply)</i> <input type="checkbox"/> PSC <input checked="" type="checkbox"/> LS/CMI <input checked="" type="checkbox"/> URICA <input type="checkbox"/> TCUDS <input type="checkbox"/> ASUS <input checked="" type="checkbox"/> WRNA <input type="checkbox"/> VPRAI <input type="checkbox"/> TCU-CTS <input type="checkbox"/> Other, please specify
<b>Briefly describe how the above assessments are used in your program.</b> <i>Example: The PSC is used as an initial triaging tool to determine whether or not a candidate for our downward departure program will receive a more detailed assessment (WRNA or LS/CMI) later.</i> <div style="color: red;"> <p>The LS/CMI and WRNA are used to determine if the client meets risk criteria for each specialty court. Marion County's drug court program serves medium-high risk individuals and uses the LS/CMI and WRNA to determine if clients are of appropriate risk level for the program. Fostering Attachment Treatment Court, Mental Health Court, and Veterans court accept individuals of all risk levels, however, the LS/CMI and WRNA determine how often the client is seen. While these three specialty courts accept individuals of all risk levels, the treatment providers for each court provide services to participants based on risk level (low versus medium-high risk). The URICA is used to determine the stage of change of court participants.</p> </div>
<b>Has this program received a Corrections Program Checklist or the George Mason University Risk-Need-Responsivity Evaluation in the last 10 years?</b> <i>(yes/no)</i>
<input checked="" type="checkbox"/> Yes • If yes, when was the most recent review conducted?
November 2019
<b>If yes, briefly describe the outcome of the most recent review and any steps to address the findings of the assessment.</b>
The specialty court program supports are not eligible for a Corrections Program Checklist (CPC). It should be noted, however, the Marion County Adult Drug Court received a CPC in 2019. At that time, the program was found to have unsatisfactory adherence to evidence-based practices. The Marion County Adult Drug Court has been making program modifications to address the recommendations made in the CPC. This includes contracting with a new substance use treatment provider, Bridgeway Recovery Services. Bridgeway Recovery Services has received a CPC for the SB 416 and substance use treatment programs and was found to have "very high" adherence to evidence-based practices. Bridgeway will be continuing that work with the services implemented for the Marion County specialty courts by ensuring court participants are receiving services of appropriate dosage and utilizing evidence-based curriculum that places heavy emphasis on skill building and practice (University of Cincinnati's Cognitive Behavioral Interventions for Substance Use).
<input type="checkbox"/> No
<b>Does this program provide culturally responsive services as defined in SB1510 (2022)</b> <i>("Culturally responsive service" means a service that is respectful of, and relevant to, the beliefs, practices, cultures and linguistic needs of diverse consumer or client populations and communities whose members identify as having particular cultural or linguistic affiliations by virtue of their place of birth, ancestry or ethnic origin, religion, preferred language or language spoken at home. A culturally responsive service has the capacity to respond to the issues of diverse communities and require knowledge and capacity at systemic, organizational, professional and individual levels of intervention.)</i> <b>(Y/N)?</b> <i>[select one]</i> <input type="checkbox"/> Yes If yes, briefly describe below. <input checked="" type="checkbox"/> No
<b>Program Four: Link Up</b>
<b>Was this program a part of the 21-23 Justice Reinvestment funded programs?</b> <input checked="" type="checkbox"/> Yes <input type="checkbox"/> No

**What Type of Program is this? (select one)**

- ☐ Pretrial
- ☐ Downward Departure
- ☐ Work Crew
- ☐ Education Support
- ☐ Specialty Court
- ☒ Peer Mentoring
- ☐ Mental Health Treatment
- ☐ Drug and Alcohol Treatment
- ☐ Housing
- ☐ Restorative Justice
- ☐ Reentry
- ☐ Informed Sentencing Process

**Briefly describe the proposed program and its purpose. Three lines or less.**

Link Up recovery mentors serve as case managers for program participants prior to their release from custody. Mentors continue to support program participants post release, until they are engaged with appropriate mental health and substance use services.

**Which of the goals of Justice Reinvestment Grant Program Does this program meet?**

*[select all that apply]*

- ☐ Reduce prison usage while protecting public safety and holding individuals accountable.
  - If it reduces prison usage, briefly describe how.
- ☒ Reduce recidivism while protecting public safety and holding individuals accountable.
  - If it reduces recidivism, briefly describe how.

The Link Up program is designed to reduce recidivism by providing mentoring services that support successful reentry for clients with co-occurring substance use and mental health disorders. The program provides an evidence-based system of cognitive and pro-social, co-occurring mentoring assistance for clients who are medium-high risk to re-offend and are exhibiting signs of co-occurring mental health and substance use issues.

**What target population(s) is this program designed to serve? Make sure to include any underserved populations as defined in HB 3064 (2019) (racial and ethnic minorities; women; lesbian, gay, bisexual, transgender, queer and other minority gender identity communities; and other historically underserved communities).**

**Gender Identity**

*[select all that apply]*

- ☒ Men
- ☒ Women
- ☐ Non-binary
- ☐ Not listed (please specify below)

**Race/Ethnicity (if it is general eligibility program, select "all")**

*[select all that apply]*

- ☐ Black or African American
- ☐ Asian or Pacific Islander
- ☐ Latino/a/e or Hispanic
- ☐ Native American or Alaska Native
- ☐ Middle Eastern or North African
- ☒ All

**Other Historically Underserved Communities**

*[select all that apply]*

- ☐ LGBTQIA+
- ☐ Not listed (please specify below)

**Risk Level**

*[select all that apply]*

- ☒ High

<input checked="" type="checkbox"/> Medium <input type="checkbox"/> Low
<b>Which crime types does this program serve?</b> <i>(select all that apply)</i>
<input checked="" type="checkbox"/> Driving Offenses (generally ORS chapters 811, 813) <input checked="" type="checkbox"/> Property Offenses (generally ORS chapters 164, 165) <input checked="" type="checkbox"/> Drug Offenses (generally ORS chapters 471, 475) <input checked="" type="checkbox"/> Other (please indicate ORS #s) Public Order Offenses (generally ORS chapter 162, 166, 167), Person Offenses (generally ORS chapter 163, 181) <input type="checkbox"/> There are exceptions to the crime type(s) selected above.
<b>Which, if any, assessments does this program use?</b> <i>(select all that apply)</i>
<input checked="" type="checkbox"/> PSC <input checked="" type="checkbox"/> LS/CMI <input checked="" type="checkbox"/> URICA <input type="checkbox"/> TCUDS <input type="checkbox"/> ASUS <input checked="" type="checkbox"/> WRNA <input type="checkbox"/> VPRAI <input checked="" type="checkbox"/> TCU-CTS <input checked="" type="checkbox"/> Other, please specify... Burns anxiety and Depression screenings, Modified Mini Screen (MMS), LEC 5, PCL-5, Mood Disorder Questionnaire
<b>Briefly describe how the above assessments are used in your program.</b> <i>Example: The PSC is used as an initial triaging tool to determine whether or not a candidate for our downward departure program will receive a more detailed assessment (WRNA or LS/CMI) later.</i>
The PSC is used as an initial screening tool for all individuals on supervision in Marion County to determine if an individual will receive a more detailed assessment. Individuals who score medium or high on the PSC complete either a LS/CMI or WRNA. Link Up participants complete a variety of responsivity assessments to screen for factors that can impact treatment engagement. These include assessments to screen for the presence of mental health symptomology, including the Burns anxiety and Depression screening, the Modified Mini Screen (MMS), the LEC 5, PCL-5, the Mood Disorder Questionnaire, the Texas Christian University-Criminal Thinking Scale (TCU-CTS) and the University of Rhode Island Change Assessment (URICA) to screen for motivation and readiness for change.
<b>Has this program received a Corrections Program Checklist or the George Mason University Risk-Need-Responsivity Evaluation in the last 10 years?</b> <i>(yes/no)</i>
<input type="checkbox"/> Yes
<ul style="list-style-type: none"> <li>• <b>If yes, when was the most recent review conducted?</b></li> </ul>
<ul style="list-style-type: none"> <li>• <b>If yes, briefly describe the outcome of the most recent review and any steps taken to address the findings of the assessment</b></li> </ul>
<input checked="" type="checkbox"/> No
This program was reestablished in Marion County in 2022.
<b>Does this program provide culturally responsive services as defined in SB1510 (2022)</b> <i>("Culturally responsive service" means a service that is respectful of, and relevant to, the beliefs, practices, cultures and linguistic needs of diverse consumer or client populations and communities whose members identify as having particular cultural or linguistic affiliations by virtue of their place of birth, ancestry or ethnic origin, religion, preferred language or language spoken at home. A culturally responsive service has the capacity to respond to the issues of diverse communities and require knowledge and capacity at systemic, organizational, professional and individual levels of intervention.)</i>
<b>(Y/N)?</b> <i>(select one)</i>
<input type="checkbox"/> Yes If yes, briefly describe below.
<input checked="" type="checkbox"/> No
<b>Program Five: Student Opportunity for Achieving Results (SOAR)</b>
<b>Was this program a part of the 21-23 Justice Reinvestment funded programs?</b>
<input checked="" type="checkbox"/> Yes <input type="checkbox"/> No
<b>What Type of Program is this?</b> <i>(select one)</i>
<input type="checkbox"/> Pretrial

<div style="display: flex; flex-direction: column; gap: 5px;"> <div><input type="checkbox"/> Downward Departure</div> <div><input type="checkbox"/> Work Crew</div> <div><input type="checkbox"/> Education Support</div> <div><input type="checkbox"/> Specialty Court</div> <div><input type="checkbox"/> Peer Mentoring</div> <div><input type="checkbox"/> Mental Health Treatment</div> <div><input type="checkbox"/> Drug and Alcohol Treatment</div> <div><input type="checkbox"/> Housing</div> <div><input type="checkbox"/> Restorative Justice</div> <div><input checked="" type="checkbox"/> Reentry</div> <div><input type="checkbox"/> Informed Sentencing Process</div> </div>
<b>Briefly describe the proposed program and its purpose.</b> Three lines or less.
SOAR is a cognitive-based program and offers services including enhanced supervision, healthy relationship skills classes, mentoring, housing, employment, and substance use treatment. A female version of the SOAR program began in March 2023.
<b>Which of the goals of Justice Reinvestment Grant Program Does this program meet?</b> <i>[select all that apply]</i>
<div style="display: flex; align-items: flex-start;"> <input type="checkbox"/> Reduce prison usage while protecting public safety and holding individuals accountable.           <ul style="list-style-type: none"> <li>If it reduces prison usage, briefly describe how.</li> </ul> </div>
<div style="display: flex; align-items: flex-start;"> <input checked="" type="checkbox"/> Reduce recidivism while protecting public safety and holding individuals accountable.           <ul style="list-style-type: none"> <li>If it reduces recidivism, briefly describe how.</li> </ul> </div>
The SOAR program utilizes validated risk assessments to develop individualized case plans that target criminogenic risks and needs. By reducing criminogenic risk, the SOAR program helps the county meet the JRI goals of maintaining community safety and reducing recidivism.
<b>What target population(s) does this program serve? Make sure to include any underserved populations as defined in HB 3064 (2019) (racial and ethnic minorities; women; lesbian, gay, bisexual, transgender, queer and other minority gender identity communities; and other historically underserved communities)."</b>
<b>Gender Identity</b> <i>[select all that apply]</i>
<div style="display: flex; flex-direction: column; gap: 5px;"> <div><input checked="" type="checkbox"/> Men</div> <div><input checked="" type="checkbox"/> Women</div> <div><input type="checkbox"/> Non-binary</div> <div><input type="checkbox"/> Not listed (please specify below)</div> </div>
<b>Race/Ethnicity</b> (if it is general eligibility program, select "all") <i>[select all that apply]</i>
<div style="display: flex; flex-direction: column; gap: 5px;"> <div><input type="checkbox"/> Black or African American</div> <div><input type="checkbox"/> Asian or Pacific Islander</div> <div><input type="checkbox"/> Latino/a/e or Hispanic</div> <div><input type="checkbox"/> Native American or Alaska Native</div> <div><input type="checkbox"/> Middle Eastern or North African</div> <div><input checked="" type="checkbox"/> All</div> </div>
<b>Other Historically Underserved Communities</b> <i>[select all that apply]</i>
<div style="display: flex; flex-direction: column; gap: 5px;"> <div><input type="checkbox"/> LGBTQIA+</div> <div><input type="checkbox"/> Not listed (please specify below)</div> </div>
<b>Risk Level</b> <i>[select all that apply]</i>
<div style="display: flex; flex-direction: column; gap: 5px;"> <div><input checked="" type="checkbox"/> High</div> <div><input checked="" type="checkbox"/> Medium</div> <div><input type="checkbox"/> Low</div> </div>
<b>Which crime types does this program serve?</b> <i>(select all that apply)</i>

<input checked="" type="checkbox"/> Driving Offenses (generally ORS chapters 811, 813) <input checked="" type="checkbox"/> Property Offenses (generally ORS chapters 164, 165) <input checked="" type="checkbox"/> Drug Offenses (generally ORS chapters 471, 475) <input checked="" type="checkbox"/> Other (please indicate ORS #s) Public Order Offenses (generally ORS chapter 162, 166, 167), Person Offenses (generally ORS chapter 163, 181) <input checked="" type="checkbox"/> There are exceptions to the crime type(s) selected above. Sex offenses (generally ORS chapter 163, 167), arson (generally ORS chapter 164).
<b>Which, if any, assessments does this program use?</b> <i>(select all that apply)</i> <input checked="" type="checkbox"/> PSC <input checked="" type="checkbox"/> LS/CMI <input type="checkbox"/> URICA <input type="checkbox"/> TCUDS <input type="checkbox"/> ASUS <input checked="" type="checkbox"/> WRNA <input type="checkbox"/> VPRAI <input checked="" type="checkbox"/> TCU-CTS <input checked="" type="checkbox"/> Other, please specify...TCU Client Evaluation of Self and Treatment.
<b>Briefly describe how the above assessments are used in your program.</b> <i>Example: The PSC is used as an initial triaging tool to determine whether or not a candidate for our downward departure program will receive a more detailed assessment (WRNA or LS/CMI) later.</i> The PSC is used as an initial screening tool for all individuals on supervision in Marion County to determine if an individual will receive a more detailed assessment. Individuals who do not score low on the PSC complete either a LS/CMI or WRNA. Individuals referred to the SOAR program complete the TCU Client Evaluation of Self and Treatment to assess motivation, psychosocial functioning, and treatment engagement. Males participating in the SOAR program complete the TCU Criminal Thinking Scales to measure changes in criminal thinking.
<b>Has this program received a Corrections Program Checklist or the George Mason University Risk-Need-Responsivity Evaluation in the last 10 years?</b> <i>(yes/no)</i> <input checked="" type="checkbox"/> Yes
<ul style="list-style-type: none"> <li>• <b>If so, when was the review conducted?</b></li> </ul>
November 2016 April 2023
<ul style="list-style-type: none"> <li>• <b>Briefly describe the outcome and any steps to address the findings of the assessment</b></li> </ul>
In April 2023, SOAR was reviewed using the George Mason University Risk-Need-Responsivity Evaluation and received an overall score of 81%. Included in the evaluation were recommendations as to how the program could further increase its adherence to evidence-based practices, with the primary recommendation being to revise the completion criteria. SOAR program staff will be reviewing the evaluation report and developing a plan to incorporate the findings into the program in the coming months.
<input type="checkbox"/> No
<b>Does this program provide culturally responsive services as defined in SB1510</b> <i>("Culturally responsive service" means a service that is respectful of, and relevant to, the beliefs, practices, cultures and linguistic needs of diverse consumer or client populations and communities whose members identify as having particular cultural or linguistic affiliations by virtue of their place of birth, ancestry or ethnic origin, religion, preferred language or language spoken at home. A culturally responsive service has the capacity to respond to the issues of diverse communities and require knowledge and capacity at systemic, organizational, professional and individual levels of intervention.)</i> <b>(Y/N)?</b> <i>[select one]</i> <input type="checkbox"/> Yes If yes, briefly describe below. <input checked="" type="checkbox"/> No
<b>Program Six: De Muniz Resource Center</b>
<b>Was this program a part of the 21-23 Justice Reinvestment funded programs?</b>
<input checked="" type="checkbox"/> Yes <input type="checkbox"/> No
<b>What Type of Program is this?</b> <i>(select one)</i> <input type="checkbox"/> Pretrial <input type="checkbox"/> Downward Departure

<input type="checkbox"/> Work Crew <input type="checkbox"/> Education Support <input type="checkbox"/> Specialty Court <input type="checkbox"/> Peer Mentoring <input type="checkbox"/> Mental Health Treatment <input type="checkbox"/> Drug and Alcohol Treatment <input type="checkbox"/> Housing <input type="checkbox"/> Restorative Justice <input checked="" type="checkbox"/> Reentry <input type="checkbox"/> Informed Sentencing Process
<b>Briefly describe the proposed program and its purpose.</b> Three lines or less.
The De Muniz Resource Center is a one stop center improving access to resources and providing direct services to those currently and formerly incarcerated including legal, medical, educational, employment assistance and housing, transportation, family reunification and other services.
<b>Which of the goals of Justice Reinvestment Grant Program Does this program meet?</b> <i>[select all that apply]</i>
<input type="checkbox"/> Reduce prison usage while protecting public safety and holding individuals accountable. • If it reduces prison usage, briefly describe how.
<input checked="" type="checkbox"/> Reduce recidivism while protecting public safety and holding individuals accountable. • If it reduces recidivism, briefly describe how.
The De Muniz Resource Center helps individuals access community services and resources related to criminogenic risk-needs. By connecting individuals with services to reduce criminogenic risk, this will help the county meet the JRI goals of promoting public safety and reducing recidivism.
<b>What target population(s) is this program designed to serve? Make sure to include any underserved populations as defined in HB 3064</b> <i>(racial and ethnic minorities; women; lesbian, gay, bisexual, transgender, queer and other minority gender identity communities; and other historically underserved communities).</i>
<b>Gender Identity</b> <i>[select all that apply]</i>
<input checked="" type="checkbox"/> Men <input checked="" type="checkbox"/> Women <input type="checkbox"/> Non-binary <input type="checkbox"/> Not listed (please specify below)
<b>Race/Ethnicity</b> (if it is general eligibility program, select “all”) <i>[select all that apply]</i>
<input type="checkbox"/> Black or African American <input type="checkbox"/> Asian or Pacific Islander <input type="checkbox"/> Latino/a/e or Hispanic <input type="checkbox"/> Native American or Alaska Native <input type="checkbox"/> Middle Eastern or North African <input checked="" type="checkbox"/> All
<b>Other Historically Underserved Communities</b> <i>[select all that apply]</i>
<input type="checkbox"/> LGBTQIA+ <input type="checkbox"/> Not listed (please specify below)
<b>Risk Level</b> <i>[select all that apply]</i>
<input checked="" type="checkbox"/> High <input checked="" type="checkbox"/> Medium <input checked="" type="checkbox"/> Low

<b>Which crime types does this program serve?</b> <i>(select all that apply)</i> <div style="margin-left: 20px;"> <input checked="" type="checkbox"/> Driving Offenses (generally ORS chapters 811, 813)  <input checked="" type="checkbox"/> Property Offenses (generally ORS chapters 164, 165)  <input checked="" type="checkbox"/> Drug Offenses (generally ORS chapters 471, 475)  <input checked="" type="checkbox"/> Other (please indicate ORS #s)  <div style="margin-left: 40px;">Public Order Offenses (generally ORS chapter 162, 166, 167), Person Offenses (generally ORS chapter 163, 181)</div> <input type="checkbox"/> There are exceptions to the crime type(s) selected above. </div>
<b>Which, if any, assessments does this program use?</b> <i>(select all that apply)</i> <div style="margin-left: 20px;"> <input checked="" type="checkbox"/> PSC  <input checked="" type="checkbox"/> LS/CMI  <input type="checkbox"/> URICA  <input type="checkbox"/> TCUDS  <input type="checkbox"/> ASUS  <input checked="" type="checkbox"/> WRNA  <input checked="" type="checkbox"/> VPRAI  <input type="checkbox"/> TCU-CTS  <input type="checkbox"/> Other, please specify </div>
<b>Briefly describe how the above assessments are used in your program.</b> <i>Example: The PSC is used as an initial triaging tool to determine whether or not a candidate for our downward departure program will receive a more detailed assessment (WRNA or LS/CMI) later.</i>
Marion County Community Corrections utilizes the PSC as an initial triaging tool to determine if individuals on supervision will receive a more detailed assessment. Individuals who do score medium-high on the PSC complete an LS/CMI or WRNA. Individuals not yet on community supervision, but who are on pretrial supervision, are assessed using the VPRAI. Community Corrections deputies refer clients to the De Muniz Resource Center for assistance accessing services that will help address criminogenic risks as identified by these assessments.
<b>Has this program received a Corrections Program Checklist or the George Mason University Risk-Need-Responsivity Evaluation in the last 10 years? (yes/no)</b>
<input type="checkbox"/> Yes
<div style="margin-left: 20px;"> <ul style="list-style-type: none"> <li><b>If yes, when was the most recent review conducted?</b></li> <li><b>If yes, briefly describe the outcome of the most recent review and any steps to address the findings of the assessment.</b></li> </ul> </div>
<input checked="" type="checkbox"/> No
The program is a resource center, and as a result, is not eligible for a Corrections Program Checklist. It should be noted, however, that the program supports participants in several of Marion County's JRI funded programs, including the SOAR, SB 416, and substance use treatment programs, which have received a CPC in the last ten years. These programs were found to adhere to evidence-based practices. More information regarding steps taken to address recommendations from the CPC can found in the respective program descriptions.
<b>Does this program provide culturally responsive services as defined in SB1510 (2022)</b> <i>("Culturally responsive service" means a service that is respectful of, and relevant to, the beliefs, practices, cultures and linguistic needs of diverse consumer or client populations and communities whose members identify as having particular cultural or linguistic affiliations by virtue of their place of birth, ancestry or ethnic origin, religion, preferred language or language spoken at home. A culturally responsive service has the capacity to respond to the issues of diverse communities and require knowledge and capacity at systemic, organizational, professional and individual levels of intervention.)</i>
<b>(Y/N)? [select one]</b> <div style="margin-left: 20px;"> <input type="checkbox"/> Yes          If yes, briefly describe below.  <input checked="" type="checkbox"/> No </div>
<b>Program Seven: Transition Services/Housing</b>
<b>Was this program a part of the 21-23 Justice Reinvestment funded programs?</b>
<input checked="" type="checkbox"/> Yes <input type="checkbox"/> No
<b>What Type of Program is this? (select one)</b> <div style="margin-left: 20px;"> <input type="checkbox"/> Pretrial  <input type="checkbox"/> Downward Departure </div>



<div style="display: flex; flex-direction: column; gap: 5px;"> <div><input type="checkbox"/> Work Crew</div> <div><input type="checkbox"/> Education Support</div> <div><input type="checkbox"/> Specialty Court</div> <div><input type="checkbox"/> Peer Mentoring</div> <div><input type="checkbox"/> Mental Health Treatment</div> <div><input type="checkbox"/> Drug and Alcohol Treatment</div> <div><input checked="" type="checkbox"/> Housing</div> <div><input type="checkbox"/> Restorative Justice</div> <div><input type="checkbox"/> Reentry</div> <div><input type="checkbox"/> Informed Sentencing Process</div> </div>
<b>Briefly describe the proposed program and its purpose.</b> Three lines or less.
This program provides short term housing stipends for medium-high risk community corrections clients. These stipends reduce specific responsivity barriers related to housing, allowing individuals to focus on other services that help reduce criminogenic risk, such as treatment and employment.
<b>Which of the goals of Justice Reinvestment Grant Program Does this program meet?</b> <i>[select all that apply]</i>
<div style="display: flex; flex-direction: column; gap: 5px;"> <div> <input type="checkbox"/> Reduce prison usage while protecting public safety and holding individuals accountable.           <ul style="list-style-type: none"> <li>• If it reduces prison usages, briefly describe how.</li> </ul> </div> <div> <input checked="" type="checkbox"/> Reduce recidivism while protecting public safety and holding individuals accountable.           <ul style="list-style-type: none"> <li>• If it reduces recidivism, briefly describe how.</li> </ul> </div> </div>
Housing support reduces specific responsivity barriers, enhance prosocial stability, and increase the likelihood of supervision compliance, thereby supporting the goal of reducing recidivism and increasing public safety.
<b>What target population(s) is this program designed to serve? Make sure to include any underserved populations as defined in HB 3064 (2019) (racial and ethnic minorities; women; lesbian, gay, bisexual, transgender, queer and other minority gender identity communities; and other historically underserved communities).</b>
<b>Gender Identity</b> <i>[select all that apply]</i>
<div style="display: flex; flex-direction: column; gap: 5px;"> <div><input checked="" type="checkbox"/> Men</div> <div><input checked="" type="checkbox"/> Women</div> <div><input type="checkbox"/> Non-binary</div> <div><input type="checkbox"/> Not listed (please specify below)</div> </div>
<b>Race/Ethnicity</b> (if it is general eligibility program, select "all") <i>[select all that apply]</i>
<div style="display: flex; flex-direction: column; gap: 5px;"> <div><input type="checkbox"/> Black or African American</div> <div><input type="checkbox"/> Asian or Pacific Islander</div> <div><input type="checkbox"/> Latino/a/e or Hispanic</div> <div><input type="checkbox"/> Native American or Alaska Native</div> <div><input type="checkbox"/> Middle Eastern or North African</div> <div><input checked="" type="checkbox"/> All</div> </div>
<b>Other Historically Underserved Communities</b> <i>[select all that apply]</i>
<div style="display: flex; flex-direction: column; gap: 5px;"> <div><input type="checkbox"/> LGBTQIA+</div> <div><input type="checkbox"/> Not listed (please specify below)</div> </div>
<b>Risk Level</b> <i>[select all that apply]</i>
<div style="display: flex; flex-direction: column; gap: 5px;"> <div><input checked="" type="checkbox"/> High</div> <div><input checked="" type="checkbox"/> Medium</div> <div><input type="checkbox"/> Low</div> </div>
<b>Which crime types does this program serve?</b> <i>(select all that apply)</i>
<div style="display: flex; flex-direction: column; gap: 5px;"> <div><input checked="" type="checkbox"/> Driving Offenses (generally ORS chapters 811, 813)</div> </div>

<input checked="" type="checkbox"/> Property Offenses (generally ORS chapters 164, 165) <input checked="" type="checkbox"/> Drug Offenses (generally ORS chapters 471, 475) <input checked="" type="checkbox"/> Other (please indicate ORS #s) Public Order Offenses (generally ORS chapter 162, 166, 167), Person Offenses (generally ORS chapter 163, 181) <input type="checkbox"/> There are exceptions to the crime type(s) selected above.
<b>Which, if any, assessments does this program use?</b> <i>(select all that apply)</i> <input checked="" type="checkbox"/> PSC <input checked="" type="checkbox"/> LS/CMI <input type="checkbox"/> URICA <input type="checkbox"/> TCUDS <input type="checkbox"/> ASUS <input checked="" type="checkbox"/> WRNA <input type="checkbox"/> VPRAI <input type="checkbox"/> TCU-CTS <input type="checkbox"/> Other, please specify...
<b>Briefly describe how the above assessments are used in your program.</b> <i>Example: The PSC is used as an initial triaging tool to determine whether or not a candidate for our downward departure program will receive a more detailed assessment (WRNA or LS/CMI) later.</i> Marion County Community Corrections utilizes the PSC as an initial triaging tool to determine if individuals on supervision will receive a more detailed assessment. Individuals who score medium-high on the PSC complete an LS/CMI or WRNA. Only individuals who are medium-high risk are eligible for housing assistance.
<b>Has this program received a Corrections Program Checklist or the George Mason University Risk-Need-Responsivity Evaluation in the last 10 years?</b> <i>(yes/no)</i> <input type="checkbox"/> Yes
<ul style="list-style-type: none"> <li>• <b>If so, when was the review conducted?</b></li> </ul>
<ul style="list-style-type: none"> <li>• <b>If yes, briefly describe the outcome of the most recent review and any steps to address the findings of the assessment.</b></li> </ul>
<input checked="" type="checkbox"/> No The transition services/housing program is not eligible for a Corrections Program Checklist (CPC). It should be noted, however, housing subsidies support participants in several of Marion County's JRI funded programs, including SOAR, SB 416, and substance use treatment, which have received a CPC in the last ten years. These programs were found to adhere to evidence-based practices. More information regarding steps taken to address recommendations from the CPC can found in the respective program descriptions.
<b>Does this program provide culturally responsive services as defined in SB1510 (2022)</b> <i>("Culturally responsive service" means a service that is respectful of, and relevant to, the beliefs, practices, cultures and linguistic needs of diverse consumer or client populations and communities whose members identify as having particular cultural or linguistic affiliations by virtue of their place of birth, ancestry or ethnic origin, religion, preferred language or language spoken at home. A culturally responsive service has the capacity to respond to the issues of diverse communities and require knowledge and capacity at systemic, organizational, professional and individual levels of intervention.)</i> <b>(Y/N)?</b> <i>[select one]</i> <input type="checkbox"/> Yes If yes, briefly describe below. <input checked="" type="checkbox"/> No
<b>Program Eight: Substance Use Treatment</b>
<b>Was this program a part of the 21-23 Justice Reinvestment funded programs?</b> <input checked="" type="checkbox"/> Yes <input type="checkbox"/> No
<b>What Type of Program is this?</b> <i>(select one)</i> <input type="checkbox"/> Pretrial <input type="checkbox"/> Downward Departure <input type="checkbox"/> Work Crew <input type="checkbox"/> Education Support <input type="checkbox"/> Specialty Court

<div style="display: flex; flex-direction: column; gap: 5px;"> <div><input type="checkbox"/> Peer Mentoring</div> <div><input type="checkbox"/> Mental Health Treatment</div> <div><input checked="" type="checkbox"/> Drug and Alcohol Treatment</div> <div><input type="checkbox"/> Housing</div> <div><input type="checkbox"/> Restorative Justice</div> <div><input type="checkbox"/> Reentry</div> <div><input type="checkbox"/> Informed Sentencing Process</div> </div>
<b>Briefly describe the proposed program and its purpose.</b> Three lines or less.
<p>The substance use treatment program increases access to alcohol/drug treatment services for community corrections clients without Oregon Health Plan (OHP). While clients work to enroll in OHP, they receive pro-social mentoring, cognitive, and substance use treatment services.</p>
<b>Which of the goals of Justice Reinvestment Grant Program Does this program meet?</b> <i>[select all that apply]</i>
<div style="display: flex; flex-direction: column; gap: 5px;"> <div> <input type="checkbox"/> Reduce prison usage while protecting public safety and holding individuals accountable.           <ul style="list-style-type: none"> <li>If it reduces prison usage, briefly describe how.</li> </ul> </div> <div> <input checked="" type="checkbox"/> Reduce recidivism while protecting public safety and holding individuals accountable.           <ul style="list-style-type: none"> <li>If it reduces recidivism, briefly describe how.</li> </ul> </div> </div>
<p>Marion County community corrections deputies utilize validated risk assessments (the LS/CMI or WRNA) to identify medium-high risk clients and develop individualized case plans that target criminogenic risks/needs. Individuals identified as having medium-high needs in the substance use domains are then referred for alcohol/drug treatment. While in the program, participants receive targeted services designed to reduce criminogenic risk. By reducing criminogenic risk, the Substance Use Treatment Program helps the county meet the JRI goals of maintaining community safety and reducing recidivism.</p>
<b>What target population(s) is this program designed to serve? Make sure to include any underserved populations as defined in HB 3064 (2019) (racial and ethnic minorities; women; lesbian, gay, bisexual, transgender, queer and other minority gender identity communities; and other historically underserved communities).</b>
<b>Gender Identity</b> <i>[select all that apply]</i>
<div style="display: flex; flex-direction: column; gap: 5px;"> <div><input checked="" type="checkbox"/> Men</div> <div><input checked="" type="checkbox"/> Women</div> <div><input type="checkbox"/> Non-binary</div> <div><input type="checkbox"/> Not listed (please specify below)</div> </div>
<b>Race/Ethnicity</b> (if it is general eligibility program, select "all") <i>[select all that apply]</i>
<div style="display: flex; flex-direction: column; gap: 5px;"> <div><input type="checkbox"/> Black or African American</div> <div><input type="checkbox"/> Asian or Pacific Islander</div> <div><input type="checkbox"/> Latino/a/e or Hispanic</div> <div><input type="checkbox"/> Native American or Alaska Native</div> <div><input type="checkbox"/> Middle Eastern or North African</div> <div><input checked="" type="checkbox"/> All</div> </div>
<b>Other Historically Underserved Communities</b> <i>[select all that apply]</i>
<div style="display: flex; flex-direction: column; gap: 5px;"> <div><input type="checkbox"/> LGBTQIA+</div> <div><input type="checkbox"/> Not listed (please specify below)</div> </div>
<b>Risk Level</b> <i>[select all that apply]</i>
<div style="display: flex; flex-direction: column; gap: 5px;"> <div><input checked="" type="checkbox"/> High</div> <div><input checked="" type="checkbox"/> Medium</div> <div><input type="checkbox"/> Low</div> </div>
<b>Which crime types does this program serve?</b> <i>(select all that apply)</i>
<div style="display: flex; flex-direction: column; gap: 5px;"> <div><input checked="" type="checkbox"/> Driving Offenses (generally ORS chapters 811, 813)</div> </div>

<input checked="" type="checkbox"/> Property Offenses (generally ORS chapters 164, 165) <input checked="" type="checkbox"/> Drug Offenses (generally ORS chapters 471, 475) <input checked="" type="checkbox"/> Other (please indicate ORS #s) Public Order Offenses (generally ORS chapter 162, 166, 167), Person Offenses (generally ORS chapter 163, 181) <input type="checkbox"/> There are exceptions to the crime type(s) selected above.
<b>Which, if any, assessments does this program use?</b> <i>(select all that apply)</i> <input checked="" type="checkbox"/> PSC <input checked="" type="checkbox"/> LS/CMI <input checked="" type="checkbox"/> URICA <input type="checkbox"/> TCUDS <input type="checkbox"/> ASUS <input checked="" type="checkbox"/> WRNA <input type="checkbox"/> VPRAI <input checked="" type="checkbox"/> TCU-CTS <input checked="" type="checkbox"/> Other, please specify... Modified Mini Screen
<b>Briefly describe how the above assessments are used in your program.</b> <i>Example: The PSC is used as an initial triaging tool to determine whether or not a candidate for our downward departure program will receive a more detailed assessment (WRNA or LS/CMI) later.</i>
Marion County Community Corrections utilizes the PSC as an initial triaging tool to determine if individuals on supervision will receive a more detailed assessment. Individuals who score medium-high on the PSC complete an LS/CMI or WRNA. Only individuals who are medium-high risk are referred to the program. Once referred to treatment, a variety of assessments are used to measure the client's specific responsivity to treatment, including the Modified Mini Screen (MMS), Texas Christian University-Criminal Thinking Scale (TCU-CTS), and the University of Rhode Island Change Assessment (URICA).
<b>Has this program received a Corrections Program Checklist or the George Mason University Risk-Need-Responsivity Evaluation in the last 10 years?</b> <i>[select one]</i>
<input checked="" type="checkbox"/> Yes
<b>• If so, when was the most recent review conducted?</b>
May 2015
<b>• If yes, briefly describe the outcome of the most recent review and any steps to address the findings of the assessment.</b>
The provider for the Substance Use Treatment Program, Bridgeway Recovery Services, received a Correctional Program Checklist (CPC) in 2015 and was determined to have "very high" adherence to evidence-based practices. Included in the CPC findings were recommendations as to how the program could further increase its adherence to evidence-based practices, including increasing the number of groups that incorporate skill acquisition. In 2021, multiple staff were trained in curriculum developed by the University of Cincinnati (Cognitive Behavioral Interventions for Substance Use) and Bridgeway Recovery Services began implementing the curriculum in July of 2021. The curriculum's focus on skill modeling, training, and practice will help Bridgeway Recovery Services address one of the primary recommendations of the CPC.
<input type="checkbox"/> No
<b>Does this program provide culturally responsive services as defined in SB1510</b> <i>("Culturally responsive service" means a service that is respectful of, and relevant to, the beliefs, practices, cultures and linguistic needs of diverse consumer or client populations and communities whose members identify as having particular cultural or linguistic affiliations by virtue of their place of birth, ancestry or ethnic origin, religion, preferred language or language spoken at home. A culturally responsive service has the capacity to respond to the issues of diverse communities and require knowledge and capacity at systemic, organizational, professional and individual levels of intervention.)</i> <b>(Y/N)?</b> <i>[select one]</i>
<input type="checkbox"/> Yes If yes, briefly describe below.
<input checked="" type="checkbox"/> No
<b>Program Nine: Peer Support Program</b>
<b>Was this program a part of the 21-23 Justice Reinvestment funded programs?</b>
<input checked="" type="checkbox"/> Yes <input type="checkbox"/> No

**What Type of Program is this? (select one)**

- ☐ Pretrial
- ☐ Downward Departure
- ☐ Work Crew
- ☐ Education Support
- ☐ Specialty Court
- ☒ Peer Mentoring
- ☐ Mental Health Treatment
- ☐ Drug and Alcohol Treatment
- ☐ Housing
- ☐ Restorative Justice
- ☐ Reentry
- ☐ Informed Sentencing Process

**Briefly describe the proposed program and its purpose. Three lines or less.**

The peer support program provides mentor services to individuals on community supervision. Mentoring activities include transportation, assistance with housing, job search skills, facilitating cognitive and skill groups, and assistance entering treatment services.

**Which of the goals of Justice Reinvestment Grant Program Does this program meet?**

(checkbox)

- ☐ Reduce prison usage while protecting public safety and holding individuals accountable.
  - If it reduces prison usage, briefly describe how.
- ☒ Reduce recidivism while protecting public safety and holding individuals accountable.
  - If it reduces recidivism, briefly describe how.

Peer support program services include cognitive programming in both individual and group formats with a primary goal of reducing criminal activity, increasing pro-social behavior and employability, enhancing pro-social motivation, pro-social support, and motivating clients to embrace a crime free lifestyle. By providing services designed to reduce criminogenic risk and increase prosocial behavior, the program will help reduce recidivism and increase public safety.

**What target population(s) is this program designed to serve? Make sure to include any underserved populations as defined in HB 3064 (racial and ethnic minorities; women; lesbian, gay, bisexual, transgender, queer and other minority gender identity communities; and other historically underserved communities).****Gender Identity**

[select all that apply]

- ☒ Men
- ☒ Women
- ☐ Non-binary
- ☐ Not listed (please specify below)

**Race/Ethnicity** (if it is general eligibility program, select "all")

[select all that apply]

- ☐ Black or African American
- ☐ Asian or Pacific Islander
- ☐ Latino/a/e or Hispanic
- ☐ Native American or Alaska Native
- ☐ Middle Eastern or North African
- ☒ All

**Other Historically Underserved Communities**

[select all that apply]

- ☐ LGBTQIA+
- ☐ Not listed (please specify below)

**Risk Level**

[select all that apply]

- ☒ High
- ☒ Medium
- ☐ Low

**Which crime types does this program serve?***(select all that apply)*

- ☒ Driving Offenses (generally ORS chapters 811, 813)
- ☒ Property Offenses (generally ORS chapters 164, 165)
- ☒ Drug Offenses (generally ORS chapters 471, 475)
- ☒ Other (please indicate ORS #s)

Public Order Offenses (generally ORS chapter 162, 166, 167), Person Offenses (generally ORS chapter 163, 181)

☐ There are exceptions to the crime type(s) selected above.**Which, if any, assessments does this program use?***(select all that apply)*

- ☒ PSC
- ☒ LS/CMI
- ☐ URICA
- ☐ TCUDS
- ☐ ASUS
- ☒ WRNA
- ☐ VPRAI
- ☐ TCU-CTS
- ☐ Other, please specify...

**Briefly describe how the above assessments are used in your program.** *Example: The PSC is used as an initial triaging tool to determine whether or not a candidate for our downward departure program will receive a more detailed assessment (WRNA or LS/CMI) later.*

Marion County Community Corrections utilizes the PSC as an initial triaging tool to determine if individuals on supervision will receive a more detailed assessment. Individuals who do not score low on the PSC complete an LS/CMI or WRNA. Only individuals who are medium-high risk are eligible for referred to the program. The peer support program uses information from the LS/CMI or WRNA to create an individualized plan for each client.

**Has this program received a Corrections Program Checklist or the George Mason University Risk-Need-Responsivity Evaluation in the last 10 years?** *(yes/no)*

☐ Yes

- **If yes, when was the most recent review conducted?**

- **If yes, briefly describe the outcome of the most recent review and any steps to address the findings of the assessment**

☒ No

The Pathfinder Network operates a comparable peer support program in another county. In consultation with DOC, it was determined that a Corrections Program Checklist was not the most appropriate measure of program impact or effectiveness. The Pathfinder Network continues to work with DOC to identify a program tool appropriate for evaluating the peer support program.

**Does this program provide culturally responsive services as defined in SB1510 (2022)** (*"Culturally responsive service" means a service that is respectful of, and relevant to, the beliefs, practices, cultures and linguistic needs of diverse consumer or client populations and communities whose members identify as having particular cultural or linguistic affiliations by virtue of their place of birth, ancestry or ethnic origin, religion, preferred language or language spoken at home. A culturally responsive service has the capacity to respond to the issues of diverse communities and require knowledge and capacity at systemic, organizational, professional and individual levels of intervention.*)

**(Y/N)?** *[select one]*☐ Yes

If yes, briefly describe below.

☒ No

# ELIGIBILITY REQUIREMENTS

Does the county consider and accept short-term transitional leave candidates as appropriate?

☒ Yes

☐ No

Does the county or county partners provide assistance to clients enrolling in the Oregon Health Plan?

☒ Yes

☐ No

## PLANNING AND IMPLEMENTATION

Describe the collaborative partnerships in place that will support the county's performance and progress toward the goals of Justice Reinvestment.

The Marion County Public Safety Coordinating Council has been integral to Marion County's Justice Reinvestment efforts. The Marion County Public Safety Coordinating Council is responsible for developing and reviewing the programs and services included in Marion County's Justice Reinvestment plans.

The council is comprised of members from public safety organizations, the courts, health care, education, veteran services, businesses, and the community at large. The collaborative relationships between member organizations allow the council to support Marion County's efforts to reduce recidivism, reduce prison utilization, increase public safety, and hold individuals accountable. The council supports the progress of Marion County's Justice Reinvestment efforts by: (1) providing leadership to help sustain Marion County's Justice Reinvestment efforts; (2) promoting community awareness of reentry and prison diversion programs and providing community stakeholders with updates on the progress of these programs; (3) providing advice and direction to the Sheriff's Office for reentry and prison diversion services; (4) identifying barriers to reentry and prison diversion success and proposing solutions for addressing them.

How does the County include the input of historically underserved communities and community partners in the operation and/or periodic review of the programs proposed for Justice Reinvestment funding?

While Marion County's JRI funded programs do not provide culturally responsive services as defined by SB 1510 (2022), the Sheriff's Office has several community forums where it shares information and listens to other community partners to identify ways it can improve the services provided. The Marion County Sheriff's Office meets quarterly with the Community Advisory Committee. The Committee is made up of a diverse group of community members who help identify community concerns related to public safety services and livability issues and then provide recommendations to the Sheriff's Office that will help enhance our community. This is a forum for the Office to provide periodic updates on JRI services. The Community Corrections division also participates in the Marion County Reentry Initiative. As part of the initiative, a diverse group of community partners gather to share information on local services. During these gatherings, the Community Corrections division provides information on JRI services.

How does the County intend to select which victim service providers in the community to award funds? Will the county run a competitive process?

☒ Yes

☐ No

- If the county will run a competitive process, please briefly describe it.
- If the County will not run a competitive process, please explain why.

In March of 2023, Marion County requested proposals for victim services following state procurement guidelines as outlined in ORS 279B.060. The request for proposals will close April 6, 2023. Contracts are estimated to be awarded and become effective July 1, 2023.

**Evaluation Plan:** Indicate how your LPSCC intends to meet the evaluation portion of your proposal. *Note: the application for the Evaluation Plan will be due August 25th.*

- ☒ Remit 3% of awarded funds to the CJC’s statewide evaluation budget.
- ☐ Retain 3% of awarded funds to a locally administered research study when possible and appropriate.

If you are remitting funds, is there a research topic that you would like the CJC to study? If so, please briefly describe it.

Marion County would be interested in the topic of trauma informed programs and services and their impact on client outcomes including recidivism.

**2023-25 Competitive Grant:** In 2017, House Bill 3078 created a competitive grant to support downward departure prison diversion programs. Funding figures for this grant will be released at a future date once the legislature has appropriated funding. At this stage in the process, we just need to know if you intend to apply for this grant.

Note: The application for the Competitive Grant will be due in September.

Would you like to apply for this optional grant?

- ☒ Yes
- ☐ No





# Marion County

## OREGON

### Board of Commissioners

(503) 588-5212  
(503) 588-5237-FAX

May 8, 2023

#### BOARD OF COMMISSIONERS

Kevin Cameron  
Danielle Bethell  
Colm Willis, **Chair**

Ken Sanchagrin, Executive Director  
Oregon Criminal Justice Commission  
885 Summer St. NE  
Salem, OR 97301

RE: Marion County's 2023-25 Justice Reinvestment Initiative Application

#### CHIEF ADMINISTRATIVE OFFICER

Jan Fritz

Dear Mr. Sanchagrin:

The Marion County Board of Commissioners fully supports Marion County's Justice Reinvestment (JRI) Grant Application to the Oregon Criminal Justice Commission for the 2023-25 biennium.

Since the passage of House Bill 3194 (2013), Marion County has consulted, collaborated, and coordinated with multiple local governmental agencies, nonprofits, local interagency councils, and community stakeholders during planning and implementing the county's justice reinvestment strategies to help achieve the goals of Oregon's Justice Reinvestment Initiative. According to the Criminal Justice Commission's Prison Usage dashboards, from November 2021 through November 2022, this resulted in a decrease in our prison utilization by 5,068 months compared to the county's historical baseline. In addition to reducing Marion County's overall prison bed usage, Marion County has seen a 71% reduction in the number of Measure 57 property crime probation revocations and a 57% reduction in the number of drug crime revocations from 2014 - 2021. The magnitude of these reductions was made possible through evidence-based program selection and design.

As the Commission may know, since the implementation of evidence-based practices as required through Senate Bill 267 (2003), Marion County has seen an overall downward trend in recidivism as it relates to new arrest, new conviction, and/or new incarceration of community corrections clients supervised for property, drug, and driving offenses.

Programs such as the Transition from Jail to Community (TJC), Link Up and Student Opportunity for Achieving Results (SOAR) are specifically designed to address the criminogenic needs of Marion County's adult reentry and diversion population. Each program provides an array of coordinated support focusing on case management, motivation classes, parenting, substance use treatment programming, cognitive-based treatment services, employment support and long-term housing. These programs contribute to Marion County's successful outcomes, ultimately changing lives and making our community safer and stronger to live in.

The Marion County Board of Commissioners urges the Oregon Criminal Justice Commission to consider Marion County's proposal Justice Reinvestment Initiative programming for the 2023-25 biennium.

Sincerely,



Colm Willis, Chair  
Marion County Board of Commissioners

Cc: Marion County Public Safety Coordinating Council Members



# Marion County

## OREGON

### Board of Commissioners

(503) 588-5212  
(503) 588-5237-FAX

May 8, 2023

#### BOARD OF COMMISSIONERS

Kevin Cameron  
Danielle Bethell  
Colm Willis, **Chair**

Ken Sanchagrin, Executive Director  
Oregon Criminal Justice Commission  
885 Summer St. NE  
Salem, OR 97301

RE: Marion County's 2023-25 Justice Reinvestment Initiative Application

#### CHIEF ADMINISTRATIVE OFFICER

Jan Fritz

Dear Mr. Sanchagrin:

The Marion County Public Safety Coordinating Council fully supports Marion County's Justice Reinvestment (JRI) Grant Application to the Oregon Criminal Justice Commission for the 2023-25 biennium.

Since the passage of House Bill 3194 (2013), Marion County has consulted, collaborated, and coordinated with multiple local governmental agencies, nonprofits, local interagency councils, and community stakeholders during planning and implementing the county's justice reinvestment strategies to help achieve the goals of Oregon's Justice Reinvestment Initiative. According to the Criminal Justice Commission's Prison Usage dashboards, from November 2021 through November 2022, this resulted in a decrease in our prison utilization by 5,068 months compared to the county's historical baseline. In addition to reducing Marion County's overall prison bed usage, Marion County has seen a 71% reduction in the number of Measure 57 property crime probation revocations and a 57% reduction in the number of drug crime revocations from 2014 - 2021. The magnitude of these reductions was made possible through evidence-based program selection and design.

As the Commission may know, since the implementation of evidence-based practices as required through Senate Bill 267 (2003), Marion County has seen an overall downward trend in recidivism as it relates to new arrest, new conviction, and/or new incarceration of community corrections clients supervised for property, drug, and driving offenses.

Programs such as the Transition from Jail to Community (TJC), Link Up and Student Opportunity for Achieving Results (SOAR) are specifically designed to address the criminogenic needs of Marion County's adult reentry and diversion population. Each program provides an array of coordinated support focusing on case management, motivation classes, parenting, substance use treatment programming, cognitive-based treatment services, employment support and long-term housing. These programs contribute to Marion County's successful outcomes, ultimately changing lives and making our community safer and stronger to live in.

The Marion County Public Safety Coordinating Council urges the Oregon Criminal Justice Commission to consider Marion County's proposal for Justice Reinvestment Initiative programming for the 2023-25 biennium.

Sincerely,



Colm Willis

Marion County Public Safety Coordinating Council

*Cc:* Marion County Public Safety Coordinating Council Members

May 8, 2021

Ken Sanchagrin, Executive Director  
Oregon Criminal Justice Commission  
855 Summer St. NE  
Salem, OR 97301

Subject: 2023-2025 Marion County Justice Reinvestment Grant Application

Executive Director Ken Sanchagrin,

The Marion County Sheriff's Office is pleased to support Marion County's Justice Reinvestment (JRI) Grant Application. Since the passage of House Bill 3194 (2013), the various agencies within our criminal justice community formalized a proven collaborative process that is time-tested and results driven. With the goals of Oregon's Justice Reinvestment Initiative in mind, Marion County is committed to: 1) Reducing recidivism and implementing the use of evidence-based practices, 2) Enhancing public safety, and 3) Holding offenders accountable. By faithfully adhering to these principles with fidelity and Continuous Quality Improvement (CQI), we achieve our final goal of JRI: 4) Decreasing our historical use of Oregon Department of Corrections prison beds.

As the Commission may know, since the implementation of evidence-based practices as required through Senate Bill 267 (2003), Marion County has seen an overall downward trend in recidivism as it relates to new arrest, new conviction, and/or new incarceration of parole and probation offenders supervised for property, drug and driving offenses. This downward trend in recidivism is a result of careful program design and represents Marion County's commitment to continued recidivism reduction efforts while holding offenders accountable and protecting the public.

According to the Criminal Justice Commission's Prison Usage dashboards, from January 2014 through March 2023, Marion County's efforts have contributed to a reduction in prison usage for property, drug and driving crimes by 75%. Further, as of March 2023, Marion County's efforts have resulted in a reduction of more than 5,600 prison months as compared to the historical baseline. This trend is indicative of Marion County's dedication to programming that yields a clear decrease in prison utilization because of our commitment to a high degree of accountability, evidence-based supervision practices, and over-arching public safety.

On behalf of the Marion County Sheriff's Office, we appreciate your consideration in supporting our Justice Reinvestment Grant Application to better serve the needs of our community.

Sincerely,



Joe Kast  
Marion County Sheriff



Jeff Wood  
Marion County Undersheriff



Jay Bergmann  
Commander, Community Corrections Division

**Tracy A. Prall**

Presiding Circuit Court Judge

**Office Location:**

100 High Street

Salem, Oregon

Phone: 503-585-5030

**Circuit Court of Oregon**

Third Judicial District

**Mailing Address:**

Marion County Courthouse

P.O. Box 12869

Salem, Oregon, 97309-0869

May 8, 2023

Ken Sanchagrin, Executive Director  
Oregon Criminal Justice Commission  
855 Summer St. NE  
Salem, OR 97301

Subject: 2023-25 Marion County Justice Reinvestment Grant Application

Executive Director Ken Sanchagrin,

The Third Judicial District of the Oregon Judicial Branch is pleased to support Marion County's Justice Reinvestment (JRI) Grant Application. Since the passage of House Bill 3194 (2013), the various agencies within our criminal justice community formalized a proven collaborative process that is time-tested and results driven. With the goals of Oregon's Justice Reinvestment Initiative in mind, Marion County is committed to: 1) Reducing recidivism and implementing the use of evidence-based practices, 2) Enhancing public safety, and 3) Holding offenders accountable. By faithfully adhering to these principles with fidelity and Continuous Quality Improvement (CQI), Marion County is achieving the final goal of JRI: 4) Decreasing Marion County's historical use of Oregon Department of Corrections prison beds.

As the Commission may know, since the implementation of evidence-based practices as required through Senate Bill 267 (2003), Marion County has seen an overall downward trend in recidivism as it relates to new arrest, new conviction, and/or new incarceration of parole and probation offenders supervised for property, drug and driving offenses. This downward trend in recidivism is a result of careful program design and represents Marion County's commitment to continued recidivism reduction efforts while holding offenders accountable and protecting the public.

According to the Criminal Justice Commission's Prison Usage dashboards, from January 2014 through March 2023, Marion County's efforts have contributed to a reduction in prison usage for property, drug and driving crimes by 75%. Further, as of March 2023, Marion County's efforts have resulted in a reduction of more than 5,600 prison months as compared to the historical baseline. This trend is indicative of Marion County's dedication to programming that yields a clear decrease in prison utilization because of our commitment to a high degree of accountability, evidence-based supervision practices, and over-arching public safety.

On behalf of the Third Judicial District of the Oregon Judicial Branch, we appreciate your consideration in supporting Marion County's Justice Reinvestment Grant Application to better serve the needs of our community.

Sincerely,

A handwritten signature in blue ink, appearing to read 'Tracy A. Prall', with a stylized, cursive script.

Tracy A. Prall  
Presiding Circuit Court Judge

BRENDAN P. MURPHY  
CHIEF DEPUTY DISTRICT ATTORNEY

MATTHEW D. KEMMY  
DOMESTIC VIOLENCE  
TRIAL TEAM LEADER

SHANNON L. SULLIVAN  
CHILD ABUSE AND JUVENILE  
TRIAL TEAM LEADER

DAVID R. WILSON  
COMPLEX FELONY  
TRIAL TEAM LEADER

BRADEN R. WOLF  
GENERAL TRIAL TEAM LEADER

PAIGE E. CLARKSON  
DISTRICT ATTORNEY



MARION COUNTY DISTRICT ATTORNEY  
P.O. BOX 14500, 555 COURT ST NE  
SALEM, OREGON 97309

CONCETTA F. SCHWESINGER  
SUPPORT ENFORCEMENT  
TRIAL TEAM LEADER

DAWN THOMPSON  
ADMINISTRATIVE SERVICES  
MANAGER

PAMI GUERRA  
VICTIM ASSISTANCE MANAGER

ROBERT ANDERSON  
CHIEF MEDICAL LEGAL DEATH  
INVESTIGATOR

May 9, 2023

Ken Sanchagrin, Executive Director  
Oregon Criminal Justice Commission  
855 Summer St. NE  
Salem, OR 97301

Subject: 2023-2025 Marion County Justice Reinvestment Grant Application

Executive Director Ken Sanchagrin,

The Marion County District Attorney's Office is pleased to support Marion County's Justice Reinvestment (JRI) Grant Application. Since the passage of House Bill 3194 (2013), the various agencies within our criminal justice community formalized a proven collaborative process that is time-tested and results driven. With the goals of Oregon's Justice Reinvestment Initiative in mind, Marion County and specifically the District Attorney's Office is committed to: 1) Reducing recidivism and implementing the use of evidence-based practices, 2) Enhancing public safety, and 3) Holding offenders accountable. By faithfully adhering to these principles with fidelity and Continuous Quality Improvement (CQI), the final goal of JRI is a natural consequence: 4) Decreasing our historical use of Oregon Department of Corrections prison beds.

As the Commission may know, since the implementation of evidence-based practices as required through Senate Bill 267 (2003), Marion County has seen an overall downward trend in recidivism as it relates to new arrest, new conviction, and/or new incarceration of parole and probation offenders supervised for property, drug and driving offenses. This local downward trend in recidivism is a result of careful program design and represents Marion County's commitment to continued recidivism reduction efforts while holding offenders accountable and protecting the public.

According to the Criminal Justice Commission's Prison Usage dashboards, from January 2014 through March 2023, Marion County's efforts have contributed to a reduction in prison usage for property, drug and driving crimes by 75%. Further, as of March 2023, Marion County's efforts



have resulted in a reduction of more than 5,600 prison months as compared to the historical baseline. This trend is indicative of Marion County's dedication to programming that yields a clear decrease in prison utilization because of our commitment to a high degree of accountability, evidence-based supervision practices, and over-arching public safety.

On behalf of the Marion County District Attorney's Office, we appreciate your consideration in supporting our Justice Reinvestment Grant Application to better serve the needs of our community.

Sincerely,

A handwritten signature in black ink, appearing to read 'Paige', followed by a long, horizontal, slightly wavy line that extends to the right.

Paige E. Clarkson  
District Attorney

# FINALIZATION OF FORMULA GRANT APPLICATION

---

**Fiscal Contact**

Name:	Laura Shaver
Legal Name of Organization for Payment:	Marion County Sheriff’s Office
State EIN:	5020425
Payment Remittance Street Address:	PO Box 14500
City:	Salem
ZIP:	97309
Email:	<a href="mailto:lashaver@co.marion.or.us">lashaver@co.marion.or.us</a>
Phone:	503-589-3258

**Would you like ACH payment processing?**

- ☒ Yes
- ☐ No

## BUDGET PROJECTION SHEET: FORMULA GRANT

---

Please see the attached budget projection sheet.

# UPDATES TO PRELIMINARY GRANT APPLICATION

Please indicate any sections from the Preliminary Application that you intend to edit.

**Note: you may need to update this information because your plans changed, because the Grant Review Committee recommended a change, or if prison usage data on the dashboard has significantly changed (growth over the last 12 months or above your baseline). Be sure to edit the indicated sections accordingly and, in those responses, include a reason for the change. After selecting each section you wish to change from the options below, please go ahead and make those edits directly to your answers in those previously submitted tasks. You will need to click on the three dots in the upper right-hand corner of the corresponding task and click "edit." This will allow you to make changes to your answers.**

Following submission of the preliminary 23-25 JRI application in May 2023, the Criminal Justice Commission provided the following feedback on Marion County's application:

"To assist you in the development of your Final Application, the Justice Reinvestment Grant Review Committee is providing the following items of feedback:

- (Program) Transition from Jail to Community Program: Ensure risk levels are not mixed in programming;
- (Program) Marion County Adult Specialty Court: Clarify if low-risk individuals are included in the program, and if so, ensure that risk levels are not mixed in programming;
- Given your response to the input of historically underserved communities and partnerships question, please clarify if each of the programs do or do not provide culturally specific services. And if they do, please highlight the specifics for each program.

Please use this feedback to strengthen your Final Application, which will be opened in SM Apply soon."

- ☐ Cover Sheet
- ☐ Consultation of Data Dashboards
- ☒ Proposed Grant Program One: Prison Diversion Program. Please see page 20-22 for updates to preliminary application response.
- ☒ Proposed Grant Program Two: Transition from Jail to Community Program. Please see page 24 for updates to preliminary application response.
- ☒ Proposed Grant Program Three: Marion County Adult Specialty Courts. Please see page 26 for updates to preliminary application response.
- ☐ Proposed Grant Program Four
- ☐ Proposed Grant Program Five
- ☐ Proposed Grant Program Six
- ☐ Proposed Grant Program Seven
- ☐ Proposed Grant Program Eight
- ☐ Proposed Grant Program Nine
- ☐ Eligibility Requirements
- ☒ Planning and Implementation. Please see page 39 for updates to preliminary application response.
- ☐ Letter of Support: LPSCC
- ☐ Letter of Support: County Governing Body
- ☐ Additional Letters of Support
- ☐ Statement of Commitment: District Attorney
- ☐ Statement of Commitment: Presiding Judge
- ☐ Statement of Commitment: Director of Community Corrections
- ☐ Additional Statements of Commitment

**Did your Local Public Safety Coordinating Council approve all components of your county's Justice Reinvestment Program application?**

- ☐ Yes
- ☐ No

# 2023 – 2025 VICTIM SERVICES APPLICATION

At least 10% of Justice Reinvestment grant funds must be allocated to community-based nonprofit victim services providers. Each victim services provider must complete a separate Victim Services Narrative and Budget. For the 2023-2025 biennium, Marion County's victim services allocation is \$492,469. This funding is split evenly between two victim services providers, Center for Hope and Safety and Liberty House.

## VICTIM SERVICES PROVIDER #1

### Victim Services Provider #1 Contact

Name: Jayne Downing  
Title: Executive Director  
Organization: Center for Hope and Safety (CHS)  
Email: jayne@hopeandsafety.org  
Phone: (503) 378-1572

### Description of Provider

What type of victim service provider are you?

[select one]

- ☒ Domestic violence and sexual assault (DVSA)
- ☐ Children's Advocacy Centers (CAC)
- ☐ Court Appointed Special Advocates (CASA)
- ☐ Human Trafficking Services
- ☐ Bias Incident Services
- ☐ Other

If other, please specify

Ten percent of Justice Reinvestment Program funding must be allocated to community based nonprofit victim services providers. Please select all the following that apply to your organization.

[select all that apply]

- ☒ Your organization is a community-based nonprofit that serves victims of crime.
- ☒ Your program receives Department of Human Services (DHS) or Department of Justice (DOJ) funding (including Violence Against Women Act (VAWA) or Victims of Crime Act (VOCA) funding).
- ☒ Your organization is a qualified victim services provider or you employ advocates with privilege under ORS 40.264.

## DESCRIPTION OF PROPOSED SERVICES

Please describe what services will be provided to victims of crime with this funding and what measures you will use to track services provided [400-word limit].

The services provided through this funding include, but are not limited to, advocacy and support to adult and youth victims of domestic violence, teen dating violence, sexual assault, stalking, and human trafficking. JRI Victim Services funds will support the services of highly trained Intake Coordinators and a Youth Advocate. The bilingual/bicultural Intake Coordinator at the downtown Salem Advocacy Office is the first connection victims/survivors to the bilingual crisis line and when walking in for services. The bicultural Intake Coordinator at Mosaic connects shelter families with a Shelter or Housing Advocate, assists survivors in using the computers, and helps them select food, hygiene, and household items (including meeting their cultural and health needs). Both Intake Coordinators assist survivors and their family members to access a variety of services, including crisis intervention, safety planning, suicide intervention, assistance with protection orders, emergency transportation, and accompaniment to court or hospital, as requested. The Youth Advocate will work with children and youth to

provide age-appropriate services to heal from trauma related to teen dating violence, sexual assault, human trafficking, and living through domestic violence.

CHS will track the number of survivors served by the Intake Coordinators and Youth Advocate and the number of services provided to each survivor. In addition, for those survivors in shelter CHS tracks the common outcomes required of all domestic and sexual violence service providers in Oregon through the Department of Justice. The anonymous surveys ask survivors to assess the services they received at CHS and any increase in their sense of safety and access to resources.

The Community-Based Victim Services Advisory Panel will use the following questions to evaluate whether the proposed services funds will positively impact victims, based on criteria outlined in OAR 213-060-0060 (6).

How will the proposed services address the need for services in the community that target marginalized, underserved populations? *[350-word limit]*.

At CHS, we are always looking for ways to better meet the needs of marginalized and underserved survivors. This includes hiring bilingual/bicultural staff. Currently, 47% of our staff are from Black, Indigenous, and People of Color (BIPOC) communities, 40% are bilingual and speak Spanish, 30% identify as LGBTQIA+, and 20% identify as having a disability. CHS makes sure our offices in downtown Salem, Woodburn, and at Mosaic are fully accessible. CHS conducts outreach and educational programming, including the distribution of materials in multiple languages and formats (Spanish, English, Russian, Vietnamese, Chinese, Audio, Braille, and some in pictorials for those unable to read) throughout rural and urban parts of the county. CHS provides training (in Spanish and English) on the dynamics of domestic violence, dating violence, sexual assault, stalking, human trafficking, oppression, and trauma to thousands of community partners and members of the public (at no cost), to increase awareness and support for marginalized populations.

CHS works with several culturally specific community partners to make sure we reach individuals in marginalized and under-served populations. Since its founding, Bridges Oregon (serving deaf, hard of hearing, and deaf/blind survivors) has been working closely with CHS. We have shared resources, technical assistance, collaborated on grant proposals, and Bridges just moved into an office next door to ours in downtown Salem. Confederated Tribes of Grand Ronde Warriors of Hope Program and CHS have worked very closely for many years to increase services to the survivors they serve. Since we opened in December of 2021, Warriors of Hope have been using our Mosaic shelter while their shelter was being completed. We provide joint case management and Warriors of Hope staff use an office space at Mosaic. This led to a three-fold increase in the number of Indigenous survivors we serve. CHS and Mano a Mano (serving the Latinx community) have partnered for many years, mostly recently to work with survivors in both programs to increase services to survivors going through the immigration process.

How will the proposed services address access barriers, such as, but not limited to: language, literacy, disability, cultural practices, and transportation issues? *[350-word limit]*.

CHS operates a 24-hour crisis line in English and Spanish and provides services in an additional 140 languages through a Language Line service. CHS also hires interpreters whenever necessary, to provide comprehensive services for those languages not spoken by our staff or volunteers. Our emergency shelter is operated 24/7. Shelter is fully accessible and supportive services include crisis intervention, safety planning, emergency transportation, and intensive case management and housing advocacy to support survivors in working toward their chosen goals. In order to assist individuals with disabilities to secure or restore benefits, CHS Housing Advocates have certification through the SOAR (SSI/SSDI Outreach, Access, & Recovery) Program. Walk-in services are provided at the fully accessible offices Monday through Friday, from 9am-5pm. The Salem Advocacy office is 1.5 blocks from the transit center and our other locations are on bus routes. CHS provides bus passes as needed (including to more rural areas of Marion and surrounding counties). CHS also has an office in Northern Marion County (Woodburn) to better serve survivors living in more rural areas. Advocacy services at both offices include access to highly trained bilingual/bicultural advocates who provide trauma-informed and victim-directed safety planning, assistance with protection orders, access to resources (food, clothing, diapers, bus passes, gas cards, cell phones, etc.), emergency transportation, and accompaniment to court and the hospital when requested. To foster literacy for children, youth, and adults, CHS has libraries and computers available at our shelters and in our offices. As mentioned above, CHS works closely with culturally specific programs to encourage connections with as many culturally supportive amenities, cultural experiences, and services as possible.

Will the proposed services increase capacity for geographic areas where services are difficult to access, limited, or non-existent?

- ☒ Yes  
☐ No

Are the proposed services trauma-informed?

- ☐ Yes  
☐ No

Do you use Osnum for your existing data collection requirements?

- ☐ Yes  
☒ No

If no, identify what data, including, but not limited to, demographic information of victims served will be collected. *[200-word limit]*.

The Center for Hope & Safety uses EmpowerDB, an approved compatible database through HUD, DOJ, and our local Continuum of Care (CoC). EmpowerDB allows us to collect all the same data as Osnum, in a format we prefer. Data includes demographics, services provided, and all required reporting information for our grantors.

**Are you a culturally specific organization as defined in SB 1510 (2022)?**

("Culturally specific organization" means an organization, or a program within an organization, that serves a particular cultural community, that is primarily staffed and led by members of that community and that demonstrates self-advocacy, positive cultural identity and intimate knowledge of the lived experience of the community, including but not limited to: (A) The impact of structural and individual racism or discrimination on the community; (B) Specific disparities in access to services and resources experienced by the community; and (C) Community strengths, cultural practices, beliefs and traditions.)

- ☐ Yes

If yes, briefly describe *[200-word limit]*.

- ☒ No

**Does this program provide culturally responsive services as defined in SB 1510 (2022)?**

("Culturally responsive service" means a service that is respectful of, and relevant to, the beliefs, practices, cultures and linguistic needs of diverse consumer or client populations and communities whose members identify as having particular cultural or linguistic affiliations by virtue of their place of birth, ancestry or ethnic origin, religion, preferred language or language spoken at home. A culturally responsive service has the capacity to respond to the issues of diverse communities and require knowledge and capacity at systemic, organizational, professional and individual levels of intervention).

- ☒ Yes

If yes, briefly describe *[200-word limit]*.

CHS strives to meet the needs of each individual survivor and surround them with all the cultural supports we possibly can. This includes supporting cultural beliefs, practices, physical and emotional support needs. As mentioned above, we offer our educational and informational materials in multiple languages and formats. Our volunteers, staff, and leadership are diverse, and it is common for survivors to see their culture represented during their time working with us. If for whatever reason we cannot directly offer a culturally specific support a survivor wants or needs, we work closely with partners to expand what is available to survivors and their families. Due to the incredible job of outreach our BIPOC staff have done through all areas of our county, CHS serves a higher proportion of underserved and marginalized communities through our programs than the census figures for our area would predict.

- ☐ No

## BUDGET FOR VICTIM SERVICES PROVIDER #1

Please see the attached budget projection sheet.

## VICTIM SERVICES PROVIDER #2

At least 10% of Justice Reinvestment grant funds must be allocated to community-based nonprofit victim services providers. Each victim services provider must complete a separate Victim Services Narrative and Budget.

### Victim Services Provider #2 Contact

Name: Peter Carrillo  
Title: Grant Specialist  
Organization: Liberty House  
Email: pcarrillo@libertyhousecenter.org  
Phone: 971-599-5876

### Description of Provider

What type of victim service provider are you?

[select one]

- ☐ Domestic violence and sexual assault (DVSA)
- ☒ Children's Advocacy Centers (CAC)
- ☐ Court Appointed Special Advocates (CASA)
- ☐ Human Trafficking Services
- ☐ Bias Incident Services
- ☐ Other

If other, please specify

Ten percent of Justice Reinvestment Program funding must be allocated to community based nonprofit victim services providers. Please select all the following that apply to your organization.

[select all that apply]

- ☒ Your organization is a community-based nonprofit that serves victims of crime.
- ☐ Your program receives Department of Human Services (DHS) or Department of Justice (DOJ) funding (including Violence Against Women Act (VAWA) or Victims of Crime Act (VOCA) funding).
- ☐ Your organization is a qualified victim services provider or you employ advocates with privilege under ORS 40.264.

## DESCRIPTION OF PROPOSED SERVICES

Please describe what services will be provided to victims of crime with this funding and what measures you will use to track services provided [400-word limit].

The therapists in Hope & Wellness Services, our mental health program, provide trauma-focused therapy for children who have been victims of abuse, neglect, rape, trafficking, and torture. Our therapists use Trauma-Focused Cognitive Behavioral Therapy (TF-CBT), Eye Movement Desensitization and Reprocessing (EMDR), and art and sensory play therapy to help reduce the negative effects of trauma and help clients build resilience and restore a sense of wholeness after trauma. Hope & Wellness Services also provides family therapy to improve parent-child attachment and strengthen family relationships. Our Trauma-Informed Caregiver Group Therapy helps caregivers understand how trauma affects children and how they can support children as they heal. Hope & Wellness Services also offers individual therapy to adults who have experienced childhood trauma. These direct trauma-focused services help victims of abuse and neglect heal after trauma. The therapists track individual therapy progress with the Youth Outcomes Questionnaire, an evidence-based measurement of treatment progress. We collect client data in our electronic health record.

The Community-Based Victim Services Advisory Panel will use the following questions to evaluate whether the proposed services funds will positively impact victims, based on criteria outlined in OAR 213-060-0060 (6).

How will the proposed services address the need for services in the community that target marginalized, underserved populations? [350-word limit].

The therapists in our mental health program often serve clients who are marginalized by poverty. Approximately 85 percent of those we serve are either uninsured or qualify for Medicaid. The clients our therapists see are sometimes struggling with homelessness or other kinds of financial instability. Hope & Wellness Services provides therapy on a sliding pay scale to increase access to these critical services. The children who receive care at Liberty House might have difficulty accessing services elsewhere.

Liberty House also serves a region rich in linguistic diversity. Nearly 25 percent of Marion County does not use English as a primary language at home. Liberty House employs bilingual staff in key positions in all our programs so that we can meet the linguistic needs of our community consistently and sustainably. Our bilingual therapist ensures that children in our community can receive therapy in Spanish or English, which is an important aspect of our ability to serve the Latino community.

Liberty House also serves the rural regions in our community where access to mental health care is limited due to long driving distances for services and the lack of available mental health providers. We are centrally located in North Salem to reduce long driving distances and increase access for rural populations as well.

The services Liberty House provides are critical to the safety and well-being of children in our community. We offer a unique service in Marion County that works to heal the devastating effects of child abuse and neglect.

How will the proposed services address access barriers, such as, but not limited to: language, literacy, disability, cultural practices, and transportation issues? *[350-word limit]*.

In order to address language barriers to access, Liberty House hires bilingual staff in key positions in all our programs. This ensures that victims of abuse and neglect can receive therapy in the language that they are most comfortable speaking. Our therapists can provide services in Spanish and English, and we contract with translation services as necessary.

The children our therapists serve all experience some level of delay, regression, or post-traumatic stress disorder that meets the Diagnostic and Statistical Manual of Mental Disorders diagnostic criteria. The services we provide help children process trauma and reduce the severity of these symptoms. Approximately 5 percent of our clients carry an additional physical disability. Our campus is ADA accessible to meet their needs.

The therapists receive yearly training in cultural competency and responsiveness and trauma-informed care across the lifespan. They have an established ethic in honoring the diverse identities of our clients and their cultural practices. In 2023, all Liberty House staff also completed a Diversity, Equity, Inclusion, and Access training to ensure our ability to provide care that meets the needs of our diverse community.

Liberty House addresses transportation barriers to access through our central location. Our campus in North Salem reduces the driving distance for most of the residents of our community. The campus is also located along one of the major public transportation routes and is just off the highway so that as many people as possible have access to our services. Liberty House is also working to expand access to our services. We have a secondary location in North Marion County that we are preparing for our services. This will further increase access for residents in the rural areas of Marion County.

Will the proposed services increase capacity for geographic areas where services are difficult to access, limited, or non-existent?

- ☒ Yes  
☐ No

Are the proposed services trauma-informed?

- ☒ Yes  
☐ No

Do you use Osnum for your existing data collection requirements?

- ☐ Yes  
☒ No

If no, identify what data, including, but not limited to, demographic information of victims served will be collected. *[200-word limit]*.

Liberty House uses Valent for data collection. In addition to demographic information, this allows us to track household income, gender, age, and information about a client's city of residence. Additionally, our electronic health record allows the therapists to track individual client progress and take notes on therapy sessions.

**Are you a culturally specific organization as defined in SB 1510 (2022)?**

("Culturally specific organization" means an organization, or a program within an organization, that serves a particular cultural community, that is primarily staffed and led by members of that community and that demonstrates self-advocacy, positive cultural identity and intimate knowledge of the lived experience of the community, including but not limited to: (A) The impact of structural and individual racism or



discrimination on the community; (B) Specific disparities in access to services and resources experienced by the community; and (C) Community strengths, cultural practices, beliefs and traditions.)

☐ Yes

If yes, briefly describe [200-word limit].

☒ No

**Does this program provide culturally responsive services as defined in SB 1510 (2022)?**

("Culturally responsive service" means a service that is respectful of, and relevant to, the beliefs, practices, cultures and linguistic needs of diverse consumer or client populations and communities whose members identify as having particular cultural or linguistic affiliations by virtue of their place of birth, ancestry or ethnic origin, religion, preferred language or language spoken at home. A culturally responsive service has the capacity to respond to the issues of diverse communities and require knowledge and capacity at systemic, organizational, professional and individual levels of intervention).

☒ Yes

If yes, briefly describe [200-word limit].

☐ No

Liberty House provides services in Spanish and English to meet the linguistic needs of our community. We hire and maintain bilingual staff in key positions so that we can provide these services consistently and sustainably. The Liberty House staff also completed a Diversity, Equity, Inclusion, and Access training in 2023 to continue learning about the best ways to provide culturally responsive care in our diverse community.

Liberty House is also a trauma-informed organization. This is a holistic model of care that takes into account the way that trauma affects and is affected by a person's background, culture, family, beliefs, and practices. Trauma-informed care is a person-centered approach to intervention that actively avoids re-traumatizing clients and patients.

## BUDGET FOR VICTIM SERVICES PROVIDER #2

Please see the attached budget projection sheet.

# 2023-2025 JUSTICE REINVESTMENT COMPETITIVE GRANT APPLICATION

The Competitive Grant is a companion grant that specifically supports downward departure prison diversion programs. Unlike the Formula Grant, Competitive Grant awards are not fixed by a formula. The following requirements apply to Competitive Grant awards:

- Funds awarded must be used to: A) support key personnel that increase local capacity to engage in a downward departure prison diversion program, or B) provide training directly related to the development or operation of a downward departure prison diversion program.
- No less than 10 percent of funds awarded must be distributed to community-based nonprofit organizations that provide services to victims of crime.

Applicants that seek Formula Grant funding are not required to seek Competitive Grant funding.

**What target population(s) is this program designed to serve? Make sure to include any underserved populations as defined in HB 3064 (2019) (racial and ethnic minorities; women; lesbian, gay, bisexual, transgender, queer and other minority gender identity communities; and other historically underserved communities).**

## Gender Identity

[select all that apply]

- ☒ Men
- ☒ Women
- ☒ Non-binary individuals
- ☐ Not listed (please specify below)

## Race/Ethnicity (if it is a general eligibility program, select "all")

[select all that apply]

- ☐ Black or African American
- ☐ Asian or Pacific Islander
- ☐ Latino/a/e or Hispanic
- ☐ Native American or Alaska Native
- ☐ Middle Eastern or North African
- ☒ All

## Other Historically Underserved Communities

[select all that apply]

- ☐ LBGTQIA+
- ☐ Not listed (please specify below)

## Risk Level

[select all that apply]

- ☒ High
- ☒ Medium
- ☐ Low

## Which crime types does this program serve?

[select all that apply]

- ☒ Driving Offenses (generally ORS chapters 811, 813)
- ☒ Property Offenses (generally ORS chapters 164, 165)
- ☒ Drug Offenses (generally ORS chapters 471, 475)
- ☒ Other (please indicate ORS #s)

Accepts all cases with the exception of those listed below.

- ☒ There are exceptions to the crime type(s) selected above.

The prison diversion program provides targeted supervision services to individuals who are diverted from prison by receiving SB 416 or general downward departure probationary sentences. Individuals referred for consideration for an SB 416 sentence must have a history of repeat property and/or drug offenses and no history of domestic violence offenses (generally ORS chapter 163), sex offenses (generally ORS chapter 163,167), or arson (generally ORS chapter 164). Individuals referred for consideration for a general downward departure sentence cannot have current charges or an extensive history of domestic violence offenses (generally ORS chapter 163), sex offenses (generally ORS chapter 163,167),

or arson (generally ORS chapter 164). Regardless of offense type, if the individual qualifies for another specialty caseload (e.g., mental health caseload, parents of children with DHS involvement, etc.), that will supersede the general downward departure program placement.

#### Residency Requirements

[select one]

- ☐ No residency requirements exist for this program
- ☒ Must be a county resident
- ☐ Must be a resident of the county or a nearby county
- ☐ Must be a resident of Oregon
- ☐ Other (please specify)

#### Criminal History Requirements

☒ Yes

If yes, please list the criminal history factors which result in an automatic exclusion from the program: Individuals referred for consideration for an SB 416 sentence cannot have a history of domestic violence offenses (generally ORS chapter 163), sex offenses (generally ORS chapter 163,167), or arson (generally ORS chapter 164). Individuals referred for consideration for a general downward departure sentence cannot have current charges or an extensive history of domestic violence offenses (generally ORS chapter 163), sex offenses (generally ORS chapter 163,167), or arson (generally ORS chapter 164).

☐ No

#### Other (optional)

If any, please specify what other conditions or criteria influence sentencing decisions that are not addressed in the above sections.

## DOWNWARD DEPARTURE PROGRAM DESIGN

#### Briefly describe your downward departure program.

Describe how the requested key personnel position(s) and/or training(s) are important to your downward departure program and their purpose therein.

The prison diversion program includes a competitive funding request for two Parole and Probation Deputies and a Deputy District Attorney (DDA). The two Parole and Probation Deputy positions allow the program to have dedicated caseloads for prison diversion clients. These dedicated caseloads have a smaller caseload ratio than general supervision caseloads on Marion County, increased contact standards, and allow for additional duties required by the program, such as presentence assessments. The DDA identifies and refers defendants eligible for SB 416 or general downward departure sentences. The DDA monitors the pre-sentence referral and assessment process and manages the case through the sentencing process. The dedicated positions allow supervising deputies to work closely with the assigned DDA on case progress/updates and staffing violation behavior to enhance the supervision process. The Sheriff's Office holds regular meetings with the DDA to staff individual cases as well as discuss overall program progress.

Additionally, the Sheriff's Office screens all probation clients coming through the Community Corrections intake unit to identify general downward departure cases that were not identified during presentencing. If a client meets program criteria and was sentenced to a downward departure probationary sentence, the Sheriff's Office chooses to supervise those clients in the prison diversion program to ensure a higher level of accountability and access to resources for success and reduce the likelihood they are revoked with the goal of reducing prison bed usage.

#### Which assessments will be used to inform downward departure sentencing?

[select all that apply]

For each selected assessment, answer the following:

- How is this assessment used to inform downward departure sentencing? (e.g., The PSC is used as an initial triaging tool to determine whether or not a candidate for our downward departure program will receive a more detailed assessment (WRNA or LS/CMI) later.)
- When is this assessment completed? (e.g., assessment is used after an initial assessment but before sentencing)
- Who receives the results of the assessment? (e.g., courts, DA, defense counsel, etc.)

☒ PSC

How is this assessment used to inform downward departure sentencing?

The District Attorney's Office uses the PSC as an initial triaging tool to determine if prison diversion program candidates are medium-high risk and therefore should be referred to the Sheriff's Office for a more detailed assessment.

When is this assessment completed?

The assessment is completed at the time the District Attorney's Office makes the referral to the Sheriff's Office (after the individual is charged, but before they are sentenced).

Who receives the results of the assessment?

Parole and Probation Deputies with the Marion County Sheriff's Office assigned to the program receive the results of the assessment as part of the referral from the District Attorney's Office.

☒ LS/CMI

How is this assessment used to inform downward departure sentencing?

The Sheriff's Office uses the LS/CMI to determine the risk level of prison diversion program candidates (only medium-high risk clients are eligible). If an individual is ultimately sentenced to the program, the LS/CMI also becomes the foundation for the client's case plan.

When is this assessment completed?

The assessment is completed after the District Attorney's Office refers the client to the Sheriff's Office, but before they are sentenced.

Who receives the results of the assessment?

The District Attorney's Office receives the results of the assessment and considers it when making the final recommendation as to whether an individual should be placed in the program.

☐ URICA

☒ TCUDS

How is this assessment used to inform downward departure sentencing?

The Sheriff's Office uses the TCU Drug Screen as an initial triaging tool to determine if a client may have a substance use disorder. This, in conjunction with collateral information, helps inform whether the defendant will be ordered to complete substance use assessment and treatment.

When is this assessment completed?

The assessment is completed after the District Attorney's Office refers the client to the Sheriff's Office, but before they are sentenced.

Who receives the results of the assessment?

The District Attorney's Office receives the results of the assessment and considers it when making the final recommendation as to whether an individual should be placed in the program.

☐ ASUS

☒ WRNA

How is this assessment used to inform downward departure sentencing?

The Sheriff's Office uses the WRNA to determine the risk level of prison diversion program candidates (only medium-high risk clients are eligible). If an individual is ultimately sentenced to the program, the WRNA also becomes the foundation for the client's case plan.

When is this assessment completed?

The assessment is completed after the District Attorney's Office refers the client to the Sheriff's Office, but before they are sentenced.

Who receives the results of the assessment?

The District Attorney's Office receives the results of the assessment and considers it when making the final recommendation as to whether an individual should be placed in the program.

☐ VPRAI

☐ TCU CTS

☒ Other, please specify... Client Evaluation of Self and Treatment (Intake Version)

How is this assessment used to inform downward departure sentencing?

The Sheriff's Office uses the TCU Client Evaluation of Self and Treatment (Intake Version) as an initial assessment the defendant's motivation to change. The assessment measures features such as problem recognition, desire for help, and treatment readiness.

When is this assessment completed?

The assessment is completed after the District Attorney's Office refers the client to the Sheriff's Office, but before they are sentenced.

Who receives the results of the assessment?

The District Attorney's Office receives the results of the assessment and considers it when making the final recommendation as to whether an individual should be placed in the program.

### Referral Process

If a defendant meets all eligibility requirements to participate in the downward departure program, who is the decision maker at each step in the process? For example, the following steps may exist in your process where a decision maker should be identified: candidate identification, assessment, follow-up specialized assessment, sentencing recommendation, sentencing.

The District Attorney's (DAs) Office plays the role of gatekeeper by identifying potential candidates who meet qualifying criteria for SB 416 or general downward departure sentence. If a defendant is appropriate, the DA's Office confirms the defendant is medium-high risk to reoffend based on the results of the Public Safety Checklist. If a defendant is determined to be an appropriate candidate, a referral is sent to the Sheriff's Office for further assessment and case review. The Sheriff's Office conducts a series of assessments and interviews with potential candidates to determine if they are appropriate for the program. Assessments include the LS/CMI or WRNA (to determine criminogenic risk/needs); the TCU CJ CEST-I (to measure treatment motivation and psychosocial functioning); and the TCU DS V (to screen for the presence of a substance use disorder). The Sheriff's Office reviews the totality of these assessments to make a recommendation to the DA's Office as to whether an individual proceeds forward in the court process as a program candidate. The DA's Office then makes a sentencing recommendation, and the Court makes the final sentencing decision.

There are additional individuals who proceed through the court process without a presentence assessment referral who ultimately receive a general downward departure sentence. The Sheriff's Office screens all probation clients coming through the Community Corrections intake unit to identify general downward departure cases that were not identified during pre-sentencing. If a client meets program criteria and was sentenced to a downward departure probationary sentence, the Sheriff's Office chooses to supervise those individuals in the prison diversion program.

### Supervision

What is the caseload ratio for probation officers to clients in this downward departure program? If this caseload ratio is different from standard supervision in your county, please note how.

The caseload average for the prison diversion program is 25:1 compared to the average field caseload of 49:1 in Marion County. This allows the Community Corrections deputies to have an increased level of contact with program participants. Marion County's contact standards for general supervision caseloads are 15 face to face contacts every six months for high risk clients and 7 for medium risk clients. One cognitive-behavioral intervention is required each month for general supervision caseloads. Clients assigned to the prison diversion caseloads receive enhanced face to face contacts and additional cognitive-behavioral interventions and programming based on level of risk.

What is the process when a client violates a condition of their supervision? If this process is different from standard supervision in your county, please note how.

Supervising deputies work closely with the assigned Deputy District Attorney on case progress/updates and staff violation behavior to enhance the supervision process. For clients who commit technical violations, deputies are able to impose administrative sanctions. In the case of new law violations, the District Attorney's Office may return the participant to court for a formal probation violation process.

### Service Capacity

Competitive Grant Funding may not be used to support wraparound services or sanctions for program participants, such as treatment, housing, skills training, jail beds, or community service programming. Applicants are strongly encouraged to use their formula-based Justice Reinvestment grant funding to build appropriate local service and sanction capacity.

Does your county have the capacity to provide the appropriate levels of service listed below to downward departure clients?

Substance Use Treatment

☒ Yes

☐ No

Housing

☒ Yes

☐ No

Peer Mentors

☒ Yes

☐ No

Mental Health Treatment

☒ Yes

☐ No

Other, please specify: Employment services provided through De Muniz Resource Center and relationships with local staffing agencies.

### Local Sanctions

Describe your county's capacity to provide the appropriate level of local sanctions necessary to serve the downward departure clients. For example, you could address the availability of jail beds, community service options, monitoring equipment, etc.

Community supervision in Marion County provides a high degree of accountability, as all programs and services are highly structured and contribute to the client's individual case plan. Accountability is delivered using an evidence-based sentencing program employing risk/needs assessments which ensure a coordinated delivery of services and addresses technical violations through the use of a unique sanction grid designed to limit revocations to prison.

Interventions range from a higher level of community supervision, cognitive behavioral programming and treatment, to swift and certain administrative sanctions including the use of Jail, Transition Center, electronic monitoring, community service, or day reporting.

The Marion County Jail has a budgeted capacity of 415 beds. Three of those beds are dedicated for use by the prison diversion program for both pre-trial and post-conviction. Reduced custody sanctioning capacity includes 144 beds at the Transition Center, 35 GPS (electronic monitoring) units, and space for up to 25 day-reporting clients.

Are structured sanctions used for every downward departure?

☒ Yes

☐ No

If structured sanctions are not used for every downward departure, specify what the conditions are in which a structured sanction would not be used.

### Revocations

Describe the process for revoking program participants.

Administrative sanctions will be utilized for all prison diversion program participants. Technical violations will be addressed through the administrative sanction process. Per an agreement with the DA's Office, in situations of significant new criminal activity and/or excessive technical violations, SB 416 cases will be referred to the courts for formal probation violation hearings. In preparation for formal probation violation hearings, cases will be staffed with the District Attorney's Office and the supervising deputy. Regardless of whether the client was a SB 416 or general downward departure case, any time there is the potential for revocation, the client's performance on probation, violation behavior, level of motivation, risk to the community, and other factors will be reviewed. Priority will be placed on the rehabilitation of the participant and revocation will be viewed as a last resort.

# DOWNWARD DEPARTURE PROGRAM IMPACT

- You are encouraged to use the following resources when projecting the number of prison intakes given program implementation:
- The Justice Reinvestment Program Prison Usage Dashboard looking specifically at the Number of Prison Intakes chart in the bottom right corner of the dashboard.
  - Consult the Justice Reinvestment Program Sentencing Dashboard and look at the intakes broken down by crime type and time (first sentence v. revocation).

If you received 2021-23 Competitive (Supplemental) Grant funding, refer to last biennium’s application. Did you meet your goal for anticipated decreases?

☐ Yes

☒ No

If no, please explain what contributed to that outcome.

Per the Justice Reinvestment Program Prison Usage Dashboard, in July 2021, Marion County 92 prison intakes for JRP eligible crimes. In comparison, in June 2023, Marion County had 70 intakes for JRP eligible crimes, a decrease of 22 intakes. In our 21-23 competitive (supplemental) funding application, we anticipated 60 fewer prison intakes for drug, property, and driving offenses during the biennium based on the number of new individuals diverted to probation and reductions in revocations of individuals receiving SB 416 and general downward departure sentences. In 21-23, 38 individuals received an SB 416 sentence and 86 individuals received general downward departure sentences for JRP crimes.

**Please project the number of intakes for the following categories for the 2023-25 biennium given program implementation**

☒ First sentence Property: 70

☒ Revocation Property: 27

☒ First sentence Drug: 14

☒ Revocation Drug: 14

☒ First sentence Driving: 14

☒ Revocation Driving: 0

Describe how the above projections were determined for first sentences, revocations, or both.

Marion County received funding and implemented its prison diversion program (both SB 416 and general downward departure cases) during the 21-23 biennium. As a result, we would anticipate similar trends in prison intakes given program implementation in 23-25. Using the Justice Reinvestment Program Sentencing Dashboard case detail for prison admissions for property, drug, and driving crimes between 07/01/2022 and 06/30/2023, an average monthly intake was established for each crime type (both initial sentences and revocations) and then extended 24 months.

# VICTIM SERVICES FUNDING

- Please indicate which nonprofit community-based victim services providers to receive the 10% of any award of Competitive Grant funding. Indicate the name of the provider(s) and a percentage of the Victims Services portion of the Competitive Grant award that will be distributed to them.
- For example, a county could designate two victim service providers and award the funds equally. If that were to occur, each organization would receive 50% of the award.

Provider Name	Percentage to Distribute
Center for Hope and Safety	50%
Liberty House	50%

# BUDGET PROJECTION SHEET: COMPETITIVE GRANT

---

Please see the attached budget projection sheet.



BUDGET PROJECTION SHEET									
CJC Grant Program:		Justice Reinvestment- Formula							
Applicant Name:		Marion							
<b>Personnel:</b> Salaries, wages and fringe benefits costs for all grant-funded personnel (in whole or in part) employed by the grant recipient									
<b>Directions:</b> In the "Program Supported" field, identify the specific program/project the position supports. In the "% Time per Month" field, use whole numbers to show percentage of position's time dedicated to grant-related work. Example: a half-time case manager = 50 In the "Monthly Rate" field, combine salary/wages and fringe benefits for a single month at full time, regardless of the value included in the "% Time per Month" field. In the "# Months Employed" field, indicate the number of months the position is expected to be funded during the grant period.									
Position Title	Program Supported	Employing Agency	New or Existing Position	% Time per Month	Monthly Rate (wages+fringe)	# Months Employed	Total Amount Requested	Personnel Narrative: For each requested item to the left, provide a brief justification as to how it meets or fulfills the purpose/intent of the program.	
1 Deputy Sheriff - Institutions	TJC Program	Sheriff's Office	Existing	100	13034.4	24	312,825.20	1.) 1.0 FTE senior Institutions Deputy for the Transition Center Counselor position located at the Marion County Transition Center (MCTC). The Transition Center Counselor meets with Adults in Custody (AICs) at MCTC to provide orientation to program services, assess client needs, and provide case planning and service referrals for both in-custody, reentry, and out of custody services.	
2 Deputy Sheriff - Institutions	TJC Program	Sheriff's Office	Existing	100	14204.0	24	340,896.60	2.) 1.0 FTE senior Institutions Deputy for the Marion County Transition Center (MCTC). The Deputy assists with program duties by helping facilitate AICs signing up for program services, and coordinating AIC movement throughout the MCTC to activities.	
3 Deputy Sheriff - PO	Prison Diversion Program	Sheriff's Office	Existing	100	13246.5	24	317,916.70	3.) 1.0 FTE senior Parole and Probation Deputy. Supplemental funding for the dedicated prison diversion caseloads allows the caseload ratio to remain closer to an average of 25:1, compared to the Marion County average of 49:1. Clients assigned to the prison diversion program caseloads receive enhanced face to face contacts and additional cognitive-behavioral interventions and programming based on level of risk.	
4 Deputy Sheriff - PO	Prison Diversion Program	Sheriff's Office	Existing	100	8992.1	24	215,810.35	4.) 1.0 FTE Parole and Probation Deputy. Supplemental funding for the dedicated prison diversion caseloads allows the caseload ratio to remain closer to an average of 25:1, compared to the Marion County average of 49:1. Clients assigned to the prison diversion program caseloads receive enhanced face to face contacts and additional cognitive-behavioral interventions and programming based on level of risk.	
5			Select Option				0.00	5.)	
6			Select Option				0.00	6.)	
7			Select Option				0.00	7.)	
8			Select Option				0.00	8.)	
9			Select Option				0.00	9.)	
10			Select Option				0.00	10.)	
<b>Personnel Total:</b>							\$ 1,187,448.85		
<b>Contractual Services:</b> An individual or organization providing a service or programmatic aspect of the work that is not provided directly by the grant recipient									
<b>Directions:</b> In the "Contract Title & Purpose" field, identify the contractor and what services the contract covers (generally). In the "Program Supported" field, identify the specific program/project the contracted services support.									
Contract Title & Purpose	Program Supported	Contract Category		Unit Type	Price per Unit	# Units Required	Total Amount Requested	Contractual Services Narrative: For each requested item to the left, provide a brief justification as to how it meets or fulfills the purpose/intent of the program. If you selected "personnel" as the contract category, please specify in this narrative, the associated FTE.	
1 Bridgeway Recovery Services. Provide substance use treatment for community corrections clients who do not qualify for other programs.	Substance Use Treatment	Services		Monthly	14,373.33	24.0	344,960.00	1.) Bridgeway Recovery Services will provide an evidence based system of cognitive treatment, pro-social mentoring assistance, and substance use treatment for medium-high risk community corrections clients.	
2 Bridgeway Recovery Services. Provide mentoring services for community corrections clients co-occurring substance use and mental health disorders.	Link Up	Services		Monthly	6,041.67	24.0	145,000.00	2.) Bridgeway Recovery Services will provide mentoring services to help individuals releasing from state and local custody engage with treatment services upon their release. The mentor will provide pre-release reach-in services to individuals with co-occurring substance use and mental health disorders and will continue to support program participants post release until they are engaged with appropriate mental health and substance use services.	
3 Chemeketa Community College. Provide employment and education services community corrections clients in the SOAR program.	SOAR	Services		Monthly	21,275.44	24.0	510,610.46	3.) Chemeketa Community College will provide services to support the education and employment of the SOAR program, including delivery of curriculum such as Cognitive Behavioral Interventions for Offenders Seeking Employment and assisting participants develop an individual education/employment action plan.	
4 Mid-Willamette Valley Community Action Agency. Provide the coordination of legal, medical, educational, and employment support resources to individuals under the supervision of the Marion County Sheriff's Office.	De Muniz Resource Center	Services		Monthly	11,250.00	24.0	270,000.00	4.) Mid-Willamette Valley Community Action Agency, via the De Muniz Resource Center, will provide support services to individuals referred by the Marion County Sheriff's Office, including access to legal, medical, educational, educational, and employment assistance to assist with successful reentry. Individuals referred may be under the supervision of the Marion County Transition Center, Community Corrections Division, or Pretrial Release Program.	
5 The Pathfinder Network. Provide reentry program services for male and female clients housed at the Marion County Transition Center.	TJC	Services		Monthly	13,637.91	24.0	327,309.94	5.) The Pathfinder Network will provide cognitive behavioral group services and programming in individual or group formats.	
6 The Pathfinder Network. Provide peer support services to community corrections clients.	Peer Support Program	Services		Monthly	10,929.58	24.0	262,309.94	6.) The Pathfinder Network will provide individualized peer mentor services. Services will be provided based on the client's risk-needs assessment, to include: informational sessions, recovery planning and coaching, links and referrals to resources, services, and support, assertive outreach, help to manage crises, individual and group intervention, skill building, emotional support and self-care, home visits, connection to recovery activities and communities, modeling a recovery lifestyle, transportation, client assistance, incentives, and events, and facilitation of cognitive skill groups.	
7 Contracts with multiple vendors to provide subsidy housing to community corrections clients.	Transition Services/Housing	Services		Monthly	10,078.93	24.0	241,894.29	7.) Multiple contracted providers will provide short term housing services to medium-high individuals on community supervision in Marion County. This allows clients to focus on other services that help reduce recidivism, such as treatment.	
8 Marion County Health and Human Services. Provide program supports to adult specialty court participants.	Marion County Adult Specialty Courts	Services		Monthly	10,000.00	2.0	20,000.00	8.) Marion County Health and Human Services serves as the contract administrator and the responsible agency for quarterly expense reporting as well as ensuring funding is appropriated to the Specialty Courts to cover the cost of JRI funded program supports. Funds can be used flexibly within the four specialty courts to provide the following program supports offered to clients based on need to support client progress and recovery: client rental assistance (for no more than 90 days and/or \$1,200.00); and vouchers up to \$30.00 for St. Vincent De Paul redeemable only for job/interview clothing.	
9 Bridgeway Recovery Services. Provide treatment services to SB 416 clients in the prison diversion program.	Prison Diversion Program	Services		Monthly	17,339.83	24.0	416,156.00	9.) Bridgeway Recovery Services will provide an evidence based system of cognitive treatment, pro-social mentoring assistance, and substance use treatment for medium-high risk community corrections SB 416 clients in the prison diversion program.	
10							0.00	10.)	
<b>Contractual Services Total:</b>							\$ 2,538,240.63		
<b>Housing &amp; Facilities:</b> Eligible expenses for space/utilities necessary to complete program work, short-/long-term housing support for participants, or programs within correctional									
<b>Directions:</b>									

In the "Item Description" field, identify what the expense covers (generally).

In the "Program Supported" field, identify the specific program/project the expense supports.

Item Description	Program Supported		Unit Type	Price per Unit	# Units Required	Total Amount Requested	Housing & Facilities Narrative: For each requested item to the left, provide a <b>brief</b> justification as to how it meets or fulfills the purpose/intent of the program. 1.) Daily rate for Marion County Jail bed dedicated for use by the prison diversion program both pretrial and post-conviction. Three beds are dedicated to the program during the 23-25 biennium.
1 Three Marion County jail beds	Prison Diversion		Daily	182.46	2,190.0	399,594.77	
2			Select Option			0.00	2.)
3			Select Option			0.00	3.)
4			Select Option			0.00	4.)
5			Select Option			0.00	5.)
6			Select Option			0.00	6.)
7			Select Option			0.00	7.)
8			Select Option			0.00	8.)
9			Select Option			0.00	9.)
10			Select Option			0.00	10.)
				Housing & Facilities Total:		\$ 399,594.77	

**Equipment:** Permanent or non-expendable equipment with a purchase price of \$5,000 or more, or a useable life of two or more years, for a single item.

Directions:

In the "Item Description" field, identify the name/type of equipment to be purchased.

In the "Program Supported" field, identify the specific program/project the equipment supports.

In the "Organization Served" field, identify the entity that will own and operate the equipment.

In the "# of Units Required" field, indicate the number of individual items to be purchased.

Item Description	Program Supported	Organization Served		Price per Unit	# Units Required	Total Amount Requested	Equipment Narrative: For each requested item to the left, provide a <b>brief</b> justification as to how it meets or fulfills the purpose/intent of the program.
1						0.00	1.)
2						0.00	2.)
3						0.00	3.)
4						0.00	4.)
5						0.00	5.)
6						0.00	6.)
7						0.00	7.)
8						0.00	8.)
9						0.00	9.)
10						0.00	10.)
				Equipment Total:		\$ -	

**Supplies:** Consumable materials or supplies, including the cost of small items of equipment that do not meet the threshold for the "Equipment" category.

Directions:

In the "Item Description" field, identify the name/type of supplies to be purchased.

In the "Program Supported" field, identify the specific program/project the supplies supports.

In the "Organization Served" field, identify the entity that will use the supplies.

In the "# of Units Required" field, indicate the number of individual items to be purchased.

Item Description	Program Supported	Organization Served		Price per Unit	# Units Required	Total Amount Requested	Supplies Narrative: For each requested item to the left, provide a <b>brief</b> justification as to how it meets or fulfills the purpose/intent of the program.
1 Transition Center Institutional Support and Supplies	TJC	Sheriff's Office		35,528.00	1.0	35,528.00	1.) Supplies used to support Transition Center daily institution operations, including blankets, property bags, hygiene kits, etc.
2 Transition Center Janitorial Support and Supplies	TJC	Sheriff's Office		13,442.00	1.0	13,442.00	2.) Supplies used for cleaning and facility upkeep at the Transition Center, including toilet paper, paper towels, soap, cleansers, etc.
3						0.00	3.)
4						0.00	4.)
5						0.00	5.)
6						0.00	6.)
7						0.00	7.)
8						0.00	8.)
9						0.00	9.)
10						0.00	10.)
				Supplies Total:		\$ 48,970.00	

**Training/Associated Travel:** Eligible expenses for transportation, lodging, per diem, and registrations for trainings that support grant purposes.

Directions:

Each line item should be dedicated to a single training cost or travel cost.

All travel expenses must follow state DAS and federal GSA regulations; luxury expenses are not allowed (e.g. first-class seating).

In the "Program Supported" field, identify the specific program/project the training supports.

In the "Organization(s) Served" field, list the entity(ies) that will have personnel attending training.

In the "Is this a Training or Travel Cost?" field, select to which this line item relates from the dropdown menu.

In the "Training or Travel Costs (Per Individual)" field, input the estimated individual travel cost or registration cost for one attendee.

Training Title	Program Supported	Organization Served	Location of Training	Is this a Training or Travel Cost?	Training or Travel Costs (Per Individual)	# of Individuals Attending	Total Amount Requested	Training/Associated Travel Narrative: For each requested item to the left, provide a <b>brief</b> justification as to how it meets or fulfills the purpose/intent of the program. travel line items, please indicate with which training it is associated.	For
1				Select Option			0.00	1.)	
2				Select Option			0.00	2.)	
3				Select Option			0.00	3.)	
4				Select Option			0.00	4.)	
5				Select Option			0.00	5.)	
6				Select Option			0.00	6.)	
7				Select Option			0.00	7.)	
8				Select Option			0.00	8.)	
9				Select Option			0.00	9.)	
10				Select Option			0.00	10.)	
				Training/Travel Total:		\$ -			

**Administrative Costs:** Activities associated with administering the grant such as purchasing, budgeting, payroll, accounting and staff services.

Directions:

Total Administrative Costs may not exceed 10% of total funds requested, unless an exception is granted by the Commission.  
 In the "Item Description" field, identify the specific activities to be conducted.  
 In the "Program Supported" field, identify the specific program/project the expense supports.  
 In the "Organization" field, identify the entity that will be conducting the administrative activities.

Organization: Marion County Sheriff's Office				Entry that will be considering the administrative services	
Item Description	Program Supported	Organization Served		Total Amount Requested	Administrative Costs Narrative: For each requested item to the left, provide a <b>brief</b> justification as to how it meets or fulfills the purpose/intent of the program.
1 Marion County Indirect Costs	TJC	Sheriff's Office		\$ 70,269.18	1.) Marion County assesses indirect costs to each department for central services, such as human resources, financial services, risk/facilities management and information technology. These services support the personnel working in the TJC program.
2 Marion County Indirect Costs	Prison Diversion	Sheriff's Office		\$ 39,959.48	2.) Marion County assesses indirect costs to each department for central services, such as human resources, financial services, risk/facilities management and information technology. These services support the personnel working in the Prison Diversion program.
3					3.)
4					4.)
5					5.)
6					6.)
7					7.)
8					8.)
9					9.)
10					10.)
Administrative Total:				\$ 110,228.66	

<b>Budget Request Totals:</b> This section will be automatically calculated based on the information provided above			
Budget Categories	Category Totals		
Personnel	\$ 1,187,448.85		
Contractual Services	\$ 2,538,240.63		
Housing & Facilities	\$ 399,594.77		
Equipment	\$ -		
Supplies	\$ 48,970.00		
Training/Travel	\$ -		
Subtotal	\$ 4,174,254.25		
Administrative Costs	Total	% of Total Request	
All Items	\$ 110,228.66	3%	*No more than 10%, without exception request
<b>Total Budget Request:</b>		<b>\$ 4,284,482.91</b>	

BUDGET PROJECTION SHEET									
CJC Grant Program:		Justice Reinvestment- Victim Services 10%							
Applicant Name:		Center for Hope & Safety							
Personnel: Salaries, wages and fringe benefits costs for all grant-funded personnel (in whole or in part) employed by the grant recipient									
Directions: In the "Program Supported" field, identify the specific program/project the position supports. In the "% Time per Month" field, use whole numbers to show percentage of position's time dedicated to grant-related work. Example: a half-time case manager = 50 In the "Monthly Rate" field, combine salary/wages and fringe benefits for a single month at full time, regardless of the value included in the "% Time per Month" field. In the "# Months Employed" field, indicate the number of months the position is expected to be funded during the grant period.									
Position Title	Program Supported	Employing Agency	New or Existing Position	% Time per Month	Monthly Rate (wages+fringe)	# Months Employed	Total Amount Requested	Personnel Narrative: For each requested item to the left, provide a brief justification as to how it meets or fulfills the purpose/intent of the program.	
1 Bilingual Intake Coordinator	Advocacy	Center for Hope & Safety	Existing	75	5900.0	24	106,200.00	1.) Assist survivors who enter the downtown Salem Advocacy Office, connecting with advocates and resources.	
2 Mosaic Intake Coordinator	Shelter	Center for Hope & Safety	Existing	75	5600.0	24	100,800.00	2.) Assist survivors at Mosaic shelter, connecting them with advocates and resources.	
3 Youth Advocate	Advocacy & Shelter	Center for Hope & Safety	Existing	15	5600.0	24	20,160.00	3.) Coordinate services for children and youth involved in agency programs, including those staying at shelter.	
4			Select Option				0.00	4.)	
5			Select Option				0.00	5.)	
6			Select Option				0.00	6.)	
7			Select Option				0.00	7.)	
8			Select Option				0.00	8.)	
9			Select Option				0.00	9.)	
10			Select Option				0.00	10.)	
Personnel Total:							\$	227,160.00	
Contractual Services: An individual or organization providing a service or programmatic aspect of the work that is not provided directly by the grant recipient									
Directions: In the "Contract Title & Purpose" field, identify the contractor and what services the contract covers (generally). In the "Program Supported" field, identify the specific program/project the contracted services support.									
Contract Title & Purpose	Program Supported	Contract Category	Unit Type	Price per Unit	# Units Required	Total Amount Requested	Contractual Services Narrative: For each requested item to the left, provide a brief justification as to how it meets or fulfills the purpose/intent of the program. If you selected "personnel" as the contract category, please specify in this narrative, the associated FTE.		
1		Select Option	Monthly			0.00	1.)		
2		Select Option	Select Option			0.00	2.)		
3		Select Option	Select Option			0.00	3.)		
4		Select Option	Select Option			0.00	4.)		
5		Select Option	Select Option			0.00	5.)		
6		Select Option	Select Option			0.00	6.)		
7		Select Option	Select Option			0.00	7.)		
8		Select Option	Select Option			0.00	8.)		
9		Select Option	Select Option			0.00	9.)		
10		Select Option	Select Option			0.00	10.)		
Contractual Services Total:						\$	-		
Housing & Facilities: Eligible expenses for space/utilities necessary to complete program work, short-/long-term housing support for participants, or programs within correctional									
Directions: In the "Item Description" field, identify what the expense covers (generally). In the "Program Supported" field, identify the specific program/project the expense supports.									
Item Description	Program Supported	Organization Served	Unit Type	Price per Unit	# Units Required	Total Amount Requested	Housing & Facilities Narrative: For each requested item to the left, provide a brief justification as to how it meets or fulfills the purpose/intent of the program.		
1			Select Option			0.00	1.)		
2			Select Option			0.00	2.)		
3			Select Option			0.00	3.)		
4			Select Option			0.00	4.)		
5			Select Option			0.00	5.)		
6			Select Option			0.00	6.)		
7			Select Option			0.00	7.)		
8			Select Option			0.00	8.)		
9			Select Option			0.00	9.)		
10			Select Option			0.00	10.)		
Housing & Facilities Total:						\$	-		
Equipment: Permanent or non-expendable equipment with a purchase price of \$5,000 or more, or a useable life of two or more years, for a single item									
Directions: In the "Item Description" field, identify the name/type of equipment to be purchased. In the "Program Supported" field, identify the specific program/project the equipment supports. In the "Organization Served" field, identify the entity that will own and operate the equipment. In the "# of Units Required" field, indicate the number of individual items to be purchased.									
Item Description	Program Supported	Organization Served	Price per Unit	# Units Required	Total Amount Requested	Equipment Narrative: For each requested item to the left, provide a brief justification as to how it meets or fulfills the purpose/intent of the program.			
1					0.00	1.)			
2					0.00	2.)			
3					0.00	3.)			
4					0.00	4.)			
5					0.00	5.)			
6					0.00	6.)			
7					0.00	7.)			
8					0.00	8.)			
9					0.00	9.)			
10					0.00	10.)			
Equipment Total:					\$	-			
Supplies: Consumable materials or supplies, including the cost of small items of equipment that do not meet the threshold for the "Equipment" category									

Directions:

In the "Item Description" field, identify the name/type of supplies to be purchased.

In the "Program Supported" field, identify the specific program/project the supplies supports.

In the "Organization Served" field, identify the entity that will use the supplies.

In the "# of Units Required" field, indicate the number of individual items to be purchased.

Item Description	Program Supported	Organization Served		Price per Unit	# Units Required	Total Amount Requested	Supplies Narrative: For each requested item to the left, provide a <b>brief</b> justification as to how it meets or fulfills the purpose/intent of the program.
1						0.00	1.)
2						0.00	2.)
3						0.00	3.)
4						0.00	4.)
5						0.00	5.)
6						0.00	6.)
7						0.00	7.)
8						0.00	8.)
9						0.00	9.)
10						0.00	10.)
				Supplies Total:	\$ -		

**Training/Associated Travel:** Eligible expenses for transportation, lodging, per diem, and registrations for trainings that support grant purposes

Directions:

Each line item should be dedicated to a single training cost or travel cost.

All travel expenses must follow state DAS and federal GSA regulations; luxury expenses are not allowed (e.g. first-class seating).

In the "Program Supported" field, identify the specific program/project the training supports.

In the "Organization(s) Served" field, list the entity(ies) that will have personnel attending training.

In the "Is this a Training or Travel Cost?" field, select to which this line item relates from the dropdown menu.

In the "Training or Travel Costs (Per Individual)" field, input the estimated individual travel cost or registration cost for one attendee.

Training Title	Program Supported	Organization Served	Location of Training	Is this a Training or Travel Cost?	Training or Travel Costs (Per Individual)	# of Individuals Attending	Total Amount Requested	Training/Associated Travel Narrative: For each requested item to the left, provide a <b>brief</b> justification as to how it meets or fulfills the purpose/intent of the program. travel line items, please indicate with which training it is associated.	For
1				Select Option			0.00	1.)	
2				Select Option			0.00	2.)	
3				Select Option			0.00	3.)	
4				Select Option			0.00	4.)	
5				Select Option			0.00	5.)	
6				Select Option			0.00	6.)	
7				Select Option			0.00	7.)	
8				Select Option			0.00	8.)	
9				Select Option			0.00	9.)	
10				Select Option			0.00	10.)	
				Training/Travel Total:	\$ -				

**Administrative Costs:** Activities associated with administering the grant such as purchasing, budgeting, payroll, accounting and staff services

Directions:

Total Administrative Costs may not exceed 10% of total funds requested, unless an exception is granted by the Commission.

In the "Item Description" field, identify the specific activities to be conducted.

In the "Program Supported" field, identify the specific program/project the expense supports.

In the "Organization" field, identify the entity that will be conducting the administrative activities.

Item Description	Program Supported	Organization Served		Total Amount Requested	Administrative Costs Narrative: For each requested item to the left, provide a <b>brief</b> justification as to how it meets or fulfills the purpose/intent of the program.
1 Operations Coordinator	Advocacy & Shelter	Center for Hope & Safety		\$ 19,074.65	1.) Payroll for staff listed above, statistical reports for grant
2					2.)
3					3.)
4					4.)
5					5.)
6					6.)
7					7.)
8					8.)
9					9.)
10					10.)
				Administrative Total:	\$ 19,074.65

Budget Request Totals: This section will be automatically calculated based on the information provided above			
Budget Categories	Category Totals		
Personnel	\$	227,160.00	
Contractual Services	\$	-	
Housing & Facilities	\$	-	
Equipment	\$	-	
Supplies	\$	-	
Training/Travel	\$	-	
Subtotal	\$	227,160.00	
Administrative Costs	Total	% of Total Request	
All Items	\$	19,074.65	8% *No more than 10%, without exception request
Total Budget Request:		\$	246,234.65

BUDGET PROJECTION SHEET									
CJC Grant Program:		Justice Reinvestment- Victim Services 10%							
Applicant Name:		Liberty House							
Personnel: Salaries, wages and fringe benefits costs for all grant-funded personnel (in whole or in part) employed by the grant recipient									
<p>Directions:</p> <p>In the "Program Supported" field, identify the specific program/project the position supports.</p> <p>In the "% Time per Month" field, use whole numbers to show percentage of position's time dedicated to grant-related work. Example: a half-time case manager = 50</p> <p>In the "Monthly Rate" field, combine salary/wages and fringe benefits for a single month at full time, regardless of the value included in the "% Time per Month" field.</p> <p>In the "# Months Employed" field, indicate the number of months the position is expected to be funded during the grant period.</p>									
Position Title	Program Supported	Employing Agency	New or Existing Position	% Time per Month	Monthly Rate (wages+fringe)	# Months Employed	Total Amount Requested	Personnel Narrative:	
1 Mental Health Therapist		Liberty House	Existing	33.37152519	7491.4	24	60,000.00	1.) Provides trauma-focused therapy to victims of child abuse and neglect.	
2 Mental Health Therapist		Liberty House	Existing	43.871	9709.8	24	102,235.35	2.) Provides trauma-focused therapy to victims of child abuse and neglect.	
3 Mental Health Therapist		Liberty House	Existing	47.79135659	7323.5	24	84,000.00	3.) Provides trauma-focused therapy to victims of child abuse and neglect.	
4			Select Option				0.00	4.)	
5			Select Option				0.00	5.)	
6			Select Option				0.00	6.)	
7			Select Option				0.00	7.)	
8			Select Option				0.00	8.)	
9			Select Option				0.00	9.)	
10			Select Option				0.00	10.)	
Personnel Total:							\$	246,235.35	
Contractual Services: An individual or organization providing a service or programmatic aspect of the work that is not provided directly by the grant recipient									
<p>Directions:</p> <p>In the "Contract Title &amp; Purpose" field, identify the contractor and what services the contract covers (generally).</p> <p>In the "Program Supported" field, identify the specific program/project the contracted services support.</p>									
Contract Title & Purpose	Program Supported	Contract Category	Unit Type	Price per Unit	# Units Required	Total Amount Requested	Contractual Services Narrative:		
1		Select Option	Monthly			0.00	1.)		
2		Select Option	Select Option			0.00	2.)		
3		Select Option	Select Option			0.00	3.)		
4		Select Option	Select Option			0.00	4.)		
5		Select Option	Select Option			0.00	5.)		
6		Select Option	Select Option			0.00	6.)		
7		Select Option	Select Option			0.00	7.)		
8		Select Option	Select Option			0.00	8.)		
9		Select Option	Select Option			0.00	9.)		
10		Select Option	Select Option			0.00	10.)		
Contractual Services Total:						\$	-		
Housing & Facilities: Eligible expenses for space/utilities necessary to complete program work, short-/long-term housing support for participants, or programs within correctional									
<p>Directions:</p> <p>In the "Item Description" field, identify what the expense covers (generally).</p> <p>In the "Program Supported" field, identify the specific program/project the expense supports.</p>									
Item Description	Program Supported	Organization Served	Unit Type	Price per Unit	# Units Required	Total Amount Requested	Housing & Facilities Narrative:		
1			Select Option			0.00	1.)		
2			Select Option			0.00	2.)		
3			Select Option			0.00	3.)		
4			Select Option			0.00	4.)		
5			Select Option			0.00	5.)		
6			Select Option			0.00	6.)		
7			Select Option			0.00	7.)		
8			Select Option			0.00	8.)		
9			Select Option			0.00	9.)		
10			Select Option			0.00	10.)		
Housing & Facilities Total:						\$	-		
Equipment: Permanent or non-expendable equipment with a purchase price of \$5,000 or more, or a useable life of two or more years, for a single item									
<p>Directions:</p> <p>In the "Item Description" field, identify the name/type of equipment to be purchased.</p> <p>In the "Program Supported" field, identify the specific program/project the equipment supports.</p> <p>In the "Organization Served" field, identify the entity that will own and operate the equipment.</p> <p>In the "# of Units Required" field, indicate the number of individual items to be purchased.</p>									
Item Description	Program Supported	Organization Served	Price per Unit	# Units Required	Total Amount Requested	Equipment Narrative:			
1					0.00	1.)			
2					0.00	2.)			
3					0.00	3.)			
4					0.00	4.)			
5					0.00	5.)			
6					0.00	6.)			
7					0.00	7.)			
8					0.00	8.)			
9					0.00	9.)			
10					0.00	10.)			
Equipment Total:					\$	-			
Supplies: Consumable materials or supplies, including the cost of small items of equipment that do not meet the threshold for the "Equipment" category									



Directions:

In the "Item Description" field, identify the name/type of supplies to be purchased.

In the "Program Supported" field, identify the specific program/project the supplies supports.

In the "Organization Served" field, identify the entity that will use the supplies.

In the "# of Units Required" field, indicate the number of individual items to be purchased.

Item Description	Program Supported	Organization Served		Price per Unit	# Units Required	Total Amount Requested	Supplies Narrative: For each requested item to the left, provide a <b>brief</b> justification as to how it meets or fulfills the purpose/intent of the program.
1						0.00	1.)
2						0.00	2.)
3						0.00	3.)
4						0.00	4.)
5						0.00	5.)
6						0.00	6.)
7						0.00	7.)
8						0.00	8.)
9						0.00	9.)
10						0.00	10.)
				Supplies Total:	\$	-	

**Training/Associated Travel:** Eligible expenses for transportation, lodging, per diem, and registrations for trainings that support grant purposes

Directions:

Each line item should be dedicated to a single training cost or travel cost.

All travel expenses must follow state DAS and federal GSA regulations; luxury expenses are not allowed (e.g. first-class seating).

In the "Program Supported" field, identify the specific program/project the training supports.

In the "Organization(s) Served" field, list the entity(ies) that will have personnel attending training.

In the "Is this a Training or Travel Cost?" field, select to which this line item relates from the dropdown menu.

In the "Training or Travel Costs (Per Individual)" field, input the estimated individual travel cost or registration cost for one attendee.

Training Title	Program Supported	Organization Served	Location of Training	Is this a Training or Travel Cost?	Training or Travel Costs (Per Individual)	# of Individuals Attending	Total Amount Requested	Training/Associated Travel Narrative: For each requested item to the left, provide a <b>brief</b> justification as to how it meets or fulfills the purpose/intent of the program. travel line items, please indicate with which training it is associated.	For
1				Select Option			0.00	1.)	
2				Select Option			0.00	2.)	
3				Select Option			0.00	3.)	
4				Select Option			0.00	4.)	
5				Select Option			0.00	5.)	
6				Select Option			0.00	6.)	
7				Select Option			0.00	7.)	
8				Select Option			0.00	8.)	
9				Select Option			0.00	9.)	
10				Select Option			0.00	10.)	
				Training/Travel Total:	\$	-			

**Administrative Costs:** Activities associated with administering the grant such as purchasing, budgeting, payroll, accounting and staff services

Directions:

Total Administrative Costs may not exceed 10% of total funds requested, unless an exception is granted by the Commission.

In the "Item Description" field, identify the specific activities to be conducted.

In the "Program Supported" field, identify the specific program/project the expense supports.

In the "Organization" field, identify the entity that will be conducting the administrative activities.

Item Description	Program Supported	Organization Served		Total Amount Requested	Administrative Costs Narrative: For each requested item to the left, provide a <b>brief</b> justification as to how it meets or fulfills the purpose/intent of the program.	
1					1.)	
2					2.)	
3					3.)	
4					4.)	
5					5.)	
6					6.)	
7					7.)	
8					8.)	
9					9.)	
10					10.)	
				Administrative Total:	\$	-

Budget Request Totals: This section will be automatically calculated based on the information provided above			
Budget Categories	Category Totals		
Personnel	\$	246,235.35	
Contractual Services	\$	-	
Housing & Facilities	\$	-	
Equipment	\$	-	
Supplies	\$	-	
Training/Travel	\$	-	
Subtotal	\$	246,235.35	
Administrative Costs	Total		
All Items	\$	-	0%
			*No more than 10%, without exception request
Total Budget Request:		\$	246,235.35

BUDGET PROJECTION SHEET									
CJC Grant Program:		Justice Reinvestment- Competitive							
Applicant Name:		Marion County							
Personnel: Salaries, wages and fringe benefits costs for all grant-funded personnel (in whole or in part) employed by the grant recipient									
Directions: In the "Program Supported" field, identify the specific program/project the position supports. In the "% Time per Month" field, use whole numbers to show percentage of position's time dedicated to grant-related work. Example: a half-time case manager = 50 In the "Monthly Rate" field, combine salary/wages and fringe benefits for a single month at full time, regardless of the value included in the "% Time per Month" field. In the "# Months Employed" field, indicate the number of months the position is expected to be funded during the grant period.									
Position Title	Program Supported	Employing Agency	New or Existing Position	% Time per Month	Monthly Rate (wages+fringe)	# Months Employed	Total Amount Requested	Personnel Narrative:	
1 Deputy Sheriff - PO	Prison Diversion	Sheriff's Office	Existing	100	10422.4	24	250,136.90	For each requested item to the left, provide a brief justification as to how it meets or fulfills the purpose/intent of the program. 1.) 1.0 FTE Parole and Probation Deputy. Supplemental funding for the dedicated prison diversion caseloads allows the caseload ratio to remain closer to an average of 25:1, compared to the Marion County average of 49:1. Clients assigned to the prison diversion program caseloads receive enhanced face to face contacts and additional cognitive-behavioral interventions and programming based on level of risk.	
2 Deputy Sheriff - PO	Prison Diversion	Sheriff's Office	Existing	100	13266.6	24	318,398.65	2.) 1.0 FTE senior Parole and Probation Deputy. Supplemental funding for the dedicated prison diversion caseloads allows the caseload ratio to remain closer to an average of 25:1, compared to the Marion County average of 49:1. Clients assigned to the prison diversion program caseloads receive enhanced face to face contacts and additional cognitive-behavioral interventions and programming based on level of risk.	
3 Deputy District Attorney	Prison Diversion	District Attorney	Existing	100	9159.2	24	219,820.50	3.) 1.0 FTE Deputy District Attorney (DDA). The DDA identifies and refers potential candidates to the program, manages cases as they go through the sentencing process, and then works with the Sheriff's Office to monitor and staff individual cases as well as discuss overall program progress.	
4			Select Option				0.00	4.)	
5			Select Option				0.00	5.)	
6			Select Option				0.00	6.)	
7			Select Option				0.00	7.)	
8			Select Option				0.00	8.)	
9			Select Option				0.00	9.)	
10			Select Option				0.00	10.)	
Personnel Total:							\$ 788,356.05		
Contractual Services: An individual or organization providing a service or programmatic aspect of the work that is not provided directly by the grant recipient									
Directions: In the "Contract Title & Purpose" field, identify the contractor and what services the contract covers (generally). In the "Program Supported" field, identify the specific program/project the contracted services support.									
Contract Title & Purpose	Program Supported	Contract Category	Unit Type	Price per Unit	# Units Required	Total Amount Requested	Contractual Services Narrative:		
1		Select Option	Monthly			0.00	For each requested item to the left, provide a brief justification as to how it meets or fulfills the purpose/intent of the program. If you selected "personnel" as the contract category, please specify in this narrative, the associated FTE.		
2		Select Option	Select Option			0.00	1.)		
3		Select Option	Select Option			0.00	2.)		
4		Select Option	Select Option			0.00	3.)		
5		Select Option	Select Option			0.00	4.)		
6		Select Option	Select Option			0.00	5.)		
7		Select Option	Select Option			0.00	6.)		
8		Select Option	Select Option			0.00	7.)		
9		Select Option	Select Option			0.00	8.)		
10		Select Option	Select Option			0.00	9.)		
Contractual Services Total:						\$ -			
Training/Associated Travel: Eligible expenses for transportation, lodging, per diem, and registrations for trainings that support grant purposes									
Directions: Each line item should be dedicated to a single training cost or travel cost. All travel expenses must follow state DAS and federal GSA regulations; luxury expenses are not allowed (e.g. first-class seating). In the "Program Supported" field, identify the specific program/project the training supports. In the "Organization(s) Served" field, list the entity(ies) that will have personnel attending training. In the "Is this a Training or Travel Cost?" field, select to which one this line item relates from the dropdown menu. In the "Training or Travel Costs (Per Individual)" field, input the estimated individual travel cost or registration cost for one attendee.									
Training Title	Program Supported	Organization Served	Location of Training	Is this a Training or Travel Cost?	Training or Travel Costs (Per Individual)	# of Individuals Attending	Total Amount Requested	Training/Associated Travel Narrative:	
1				Select Option			0.00	For each requested item to the left, provide a brief justification as to how it meets or fulfills the purpose/intent of the program. For travel line items, please indicate with which training it is associated.	
2				Select Option			0.00	1.)	
3				Select Option			0.00	2.)	
4				Select Option			0.00	3.)	
5				Select Option			0.00	4.)	
6				Select Option			0.00	5.)	
7				Select Option			0.00	6.)	
8				Select Option			0.00	7.)	
9				Select Option			0.00	8.)	
10				Select Option			0.00	9.)	
Training/Travel Total:						\$ -			
Administrative Costs: Activities associated with administering the grant such as purchasing, budgeting, payroll, accounting and staff services									
Directions: Total Administrative Costs may not exceed 10% of total funds requested, unless an exception is granted by the Commission. In the "Item Description" field, identify the specific activities to be conducted. In the "Program Supported" field, identify the specific program/project the expense supports. In the "Organization" field, identify the entity that will be conducting the administrative activities.									
Item Description	Program Supported	Organization Served	Total Amount Requested	Administrative Costs Narrative:					
1				For each requested item to the left, provide a brief justification as to how it meets or fulfills the purpose/intent of the program.					
2				1.)					
3				2.)					
4				3.)					
5				4.)					
6				5.)					
				6.)					

7					7.)
8					8.)
9					9.)
10					10.)
				Administrative Total: \$ -	

Budget Request Totals: This section will be automatically calculated based on the information provided above				
Budget Categories	Category Totals			
Personnel	\$	788,356.05		
Contractual Services	\$	-		
Training/Travel	\$	-		
Subtotal	\$	788,356.05		
Administrative Costs	Total	% of Total Request		
All Items	\$	-	0.00%	*No more than 10%, without exception request
Total Budget Request:		\$	788,356.05	