



City of Stayton Stormwater Management

The City of Stayton is an Equal Opportunity Employer and Service Provider

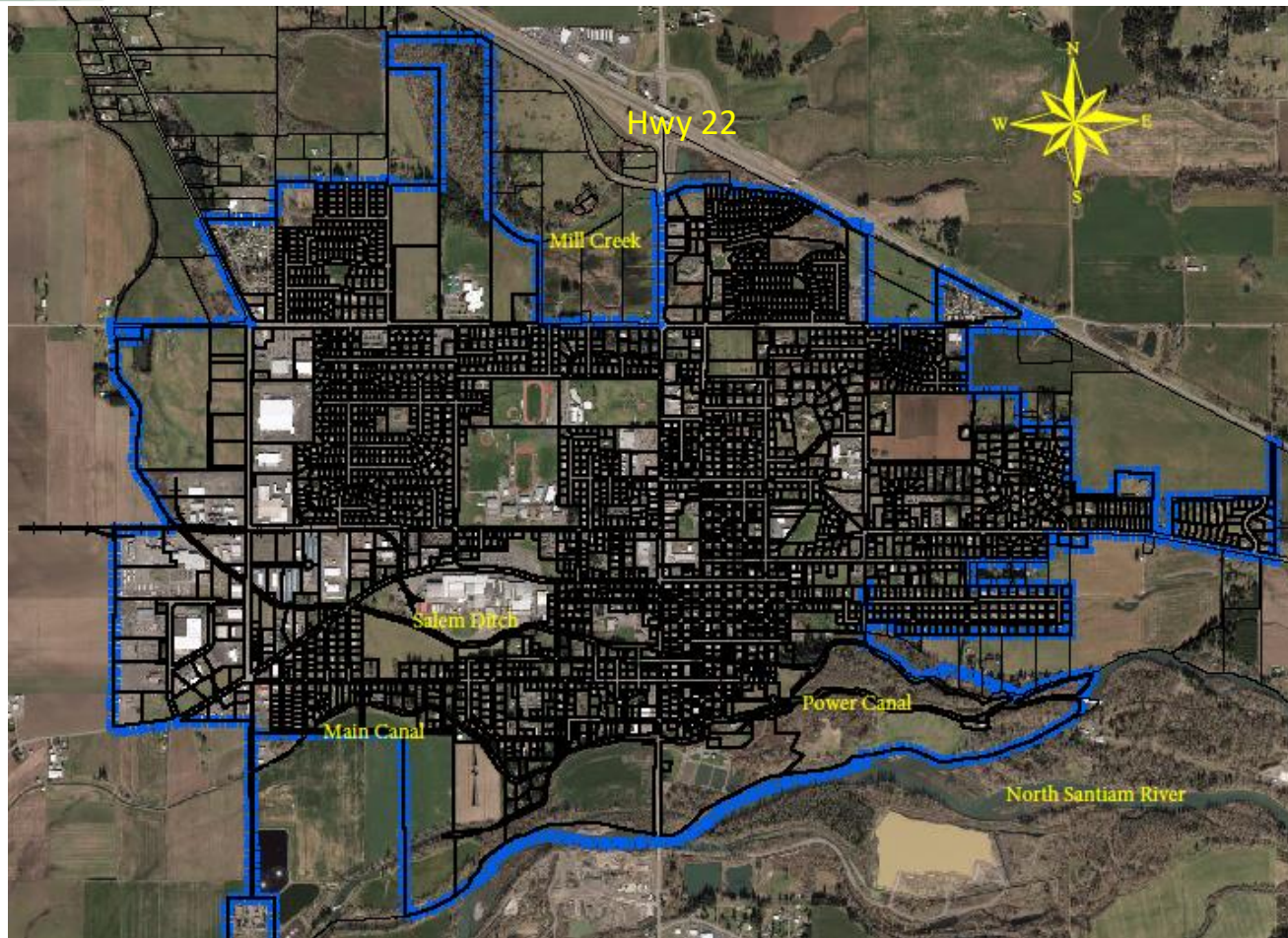


Presentation Desired Outcomes

- Obtain understanding of the stormwater issues the City and developers are faced with
- Learn about Memo of Understanding
- City Design Standards
- Groundwater in Stayton

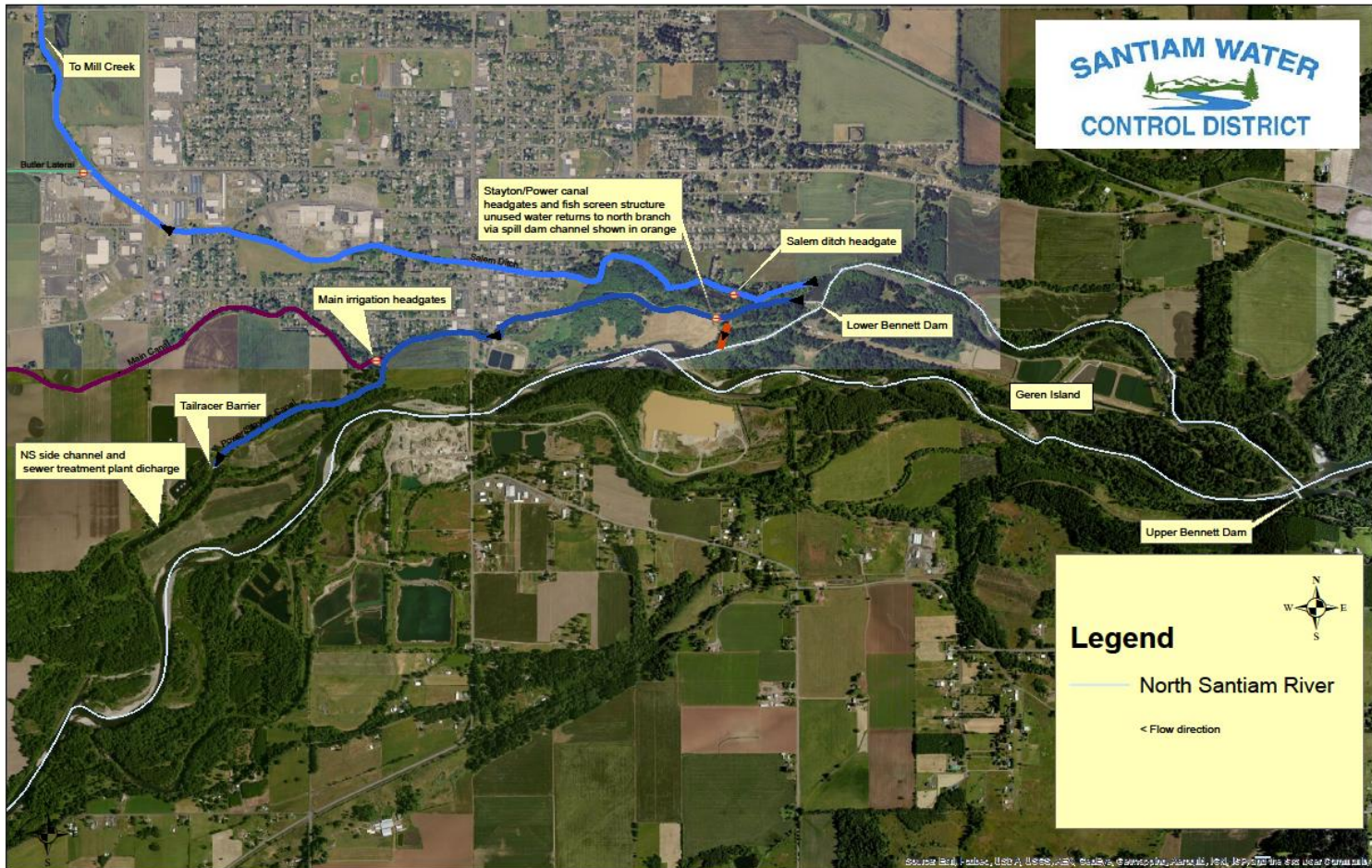


Map of Stayton



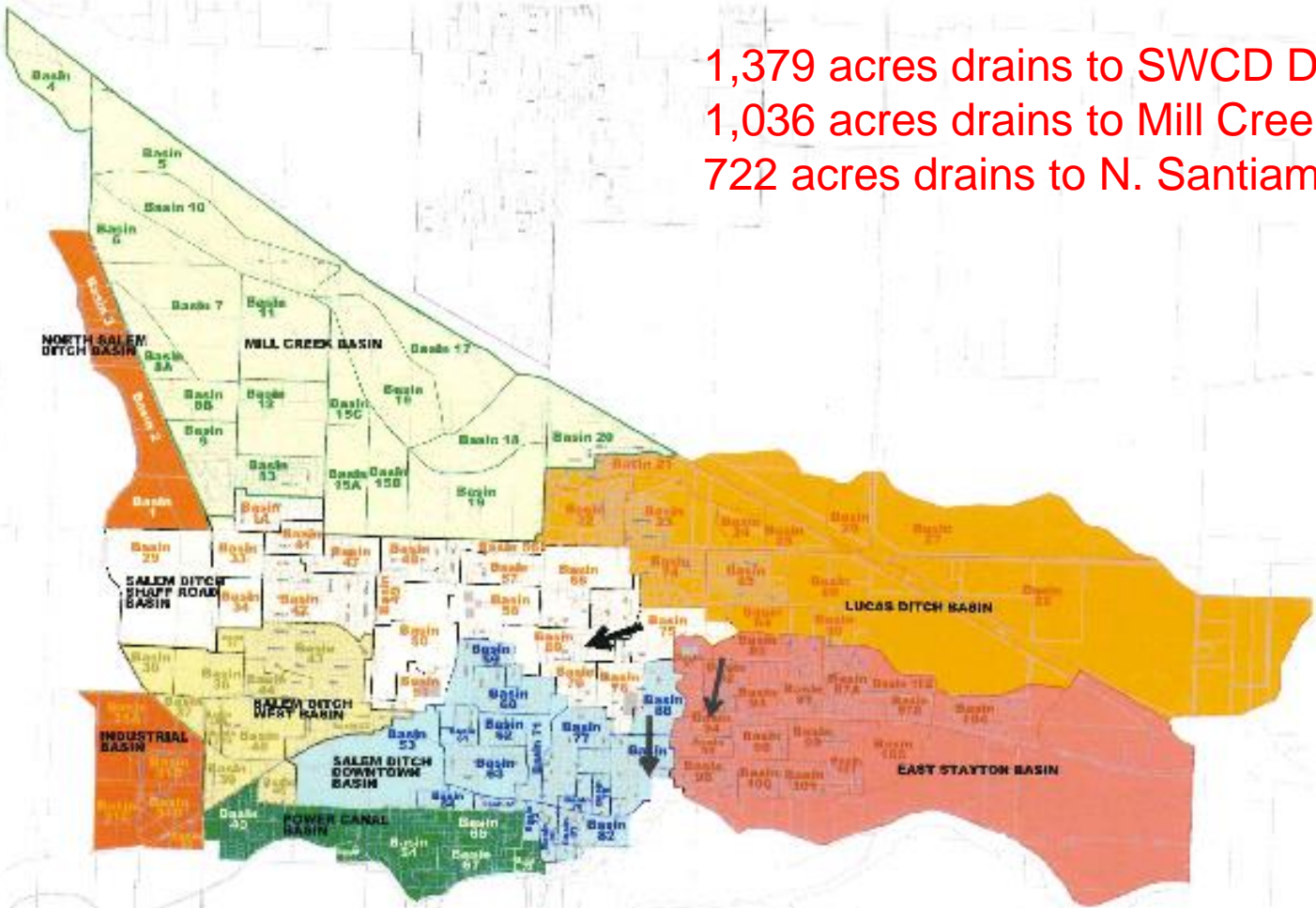


Santiam Water Control District





Drainage Basins



1,379 acres drains to SWCD Ditches
1,036 acres drains to Mill Creek
722 acres drains to N. Santiam River



Background

- City of Stayton maintains over 18 miles of storm pipes, culverts and ditches
- Perform annual cleaning, video inspection and repairs
- Perform annual capital improvements projects
 - 2018 constructed 15 acre-ft. regional detention facility
 - Install water quality manholes over existing storm water lines that outfall into SWCD ditch annually



Santiam Water Control District Lawsuit

- In 2011 Santiam Water Control District filed lawsuit against City of Stayton for unlawful taking and illegal use of its irrigation ditches
- City and SWCD negotiated a Memo of Understanding to end legal proceedings
- February 2014 the MOU was signed and executed by City Council and Santiam Water Control Board
- Quarterly Meetings with District



Memo of Understanding key components

- City to Develop a Stormwater Master Plan (2009)
- City to create Storm Drainage User Fee (2014)
- City to contribute \$230 k for Automation Improvements to District facilities (2016)
- Water quality monitoring (7 locations) performed quarterly after rain event
- Adapt Stormwater System Development Charge (2015)
- Contribute \$150k for Salem Ditch capacity improvements (not performed as of today)



Water Quantity Requirements per MOU

- Post development peak hour flow from site for a 25 year event is less than or equal to pre-development peak hour flow for a 10 year event
- Detention volumes for up to a 50 year event to pre-development flows
- All post development flows must be equal to or less than pre-development flow except for 25 year event
- City not allowed any additional flows into SWCD facilities



Stormwater Management Issues developers must be aware of

- Memo of Understanding requirements
- High Groundwater in Stayton
 - Limits types of Stormwater Management facilities
 - Set piezometers in ground to establish groundwater depths onsite
- Portland Stormwater Management Manual is the City's Design Standard for Stormwater
 - MOU states new design standards shall be modeled after Portland SWMM
- Perform Due Diligence before purchasing property



Summary

- Memo of Understanding with SWCD
- Portland Stormwater management design standards (water quality and quantity)
- High groundwater



Questions