




# RECIDIVISM & JUSTICE REINVESTMENT

Marion County PSCC  
October 10, 2017





RECIDIVISM

# 2015 ORS 423.557

- **"Recidivism" defined for statistical evaluations**
- (1) As used in this section, "recidivism" means the arrest, conviction or incarceration of a person who has previously been convicted of a crime, if the arrest, conviction or incarceration is for a new crime and occurs:
  - (a) Three years or less after the date the person was convicted of the previous crime; or
  - (b) Three years or less after the date the person was released from custody, if the person was incarcerated as a result of the conviction for the previous crime.

# 3194 New Definition of Recidivism

- Arrest, conviction, or incarceration for a new crime within 3 years of conviction or release from custody
- CJC has worked to compile data from existing data systems
- Limitations:
  - *Federal and out-of-state data is not included*
  - *We are limited by data in existing electronic data systems. If conviction or arrest is not entered as a new crime in these systems, the recidivating event is not captured for analysis*

# Cohorts

- The same DOC cohorts have been used in this analysis
  - *Parole-PPS: 6 month cohorts of those released from prison or felony local control sentence*
  - *Probation: 6 months cohorts of those sentenced to felony probation*

# Incarceration

- Available from DOC data
  - *Includes prison admissions and felony jail sentence admissions*
  - *Does NOT include misdemeanor jail sentences*
- Incarceration rate is presented, which shows the percentage of a cohort incarcerated for a new crime within 3 years.

# Conviction

- Available from OJIN and Odyssey data
  - *Includes misdemeanor and felony convictions from Oregon's 36 circuit courts*
  - *Does NOT include convictions from municipal courts or justice courts*
  - *Name and DOB matching is used to match records where the SID number is missing*
- Conviction rate is presented, which shows the percentage of a cohort convicted of a misdemeanor or felony new crime within 3 years.

# Arrest

- Available from LEDS data
  - *Includes finger-printed arrests entered into LEDS*
  - *Does NOT include other non-finger-printed arrests such as cite and release arrests*
- Arrest rate is presented, which shows the percentage of a cohort arrested for a new crime within 3 years.



## What Do Three Year Recidivism Rates Look Like Over Time by Region and County?

Select Options Below, Use Map to Select and Display County and Region

**Cohort**  
 12/31/1997    6/30/2015

**Age Group**  
 (All)

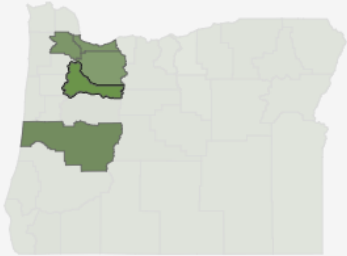
**Gender**  
 (All)

**Cohort Type**  
 Probation

**Crime Category**  
 (All)

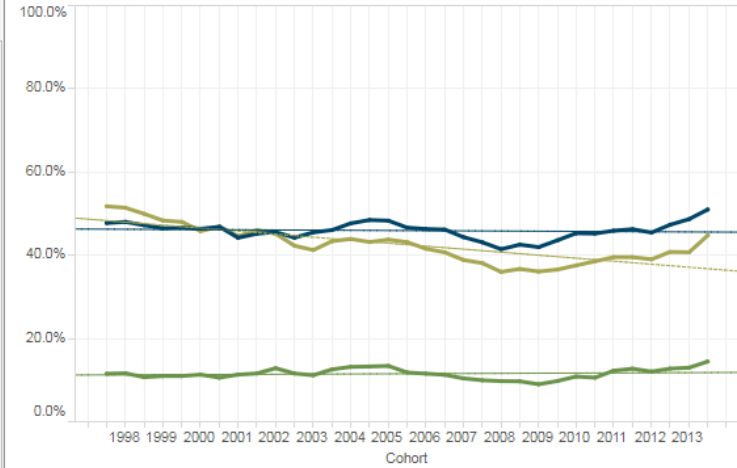
**Risk Level**  
 (All)

**Recidivism Type**  
 Incarceration (New Felony Only)

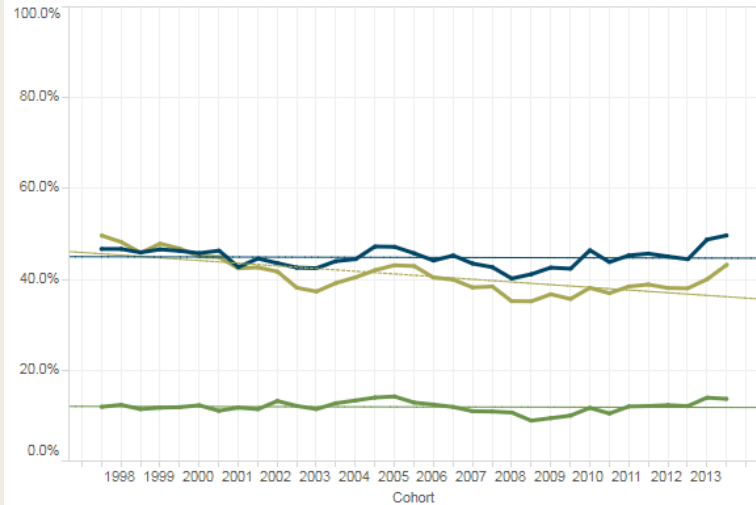


**Recidivism Type Legend:**  
■ Arrest (Any New Crime)  
■ Conviction (New Misdemeanor or Felony)  
■ Incarceration (New Felony Only)

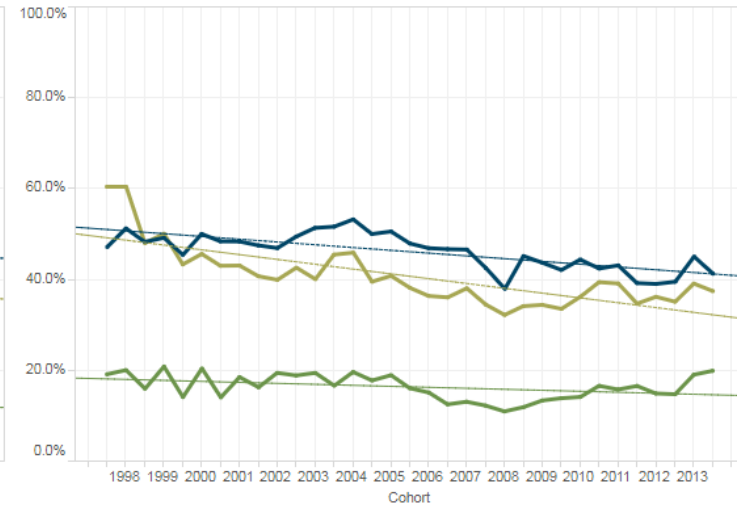
Statewide



Metro Region



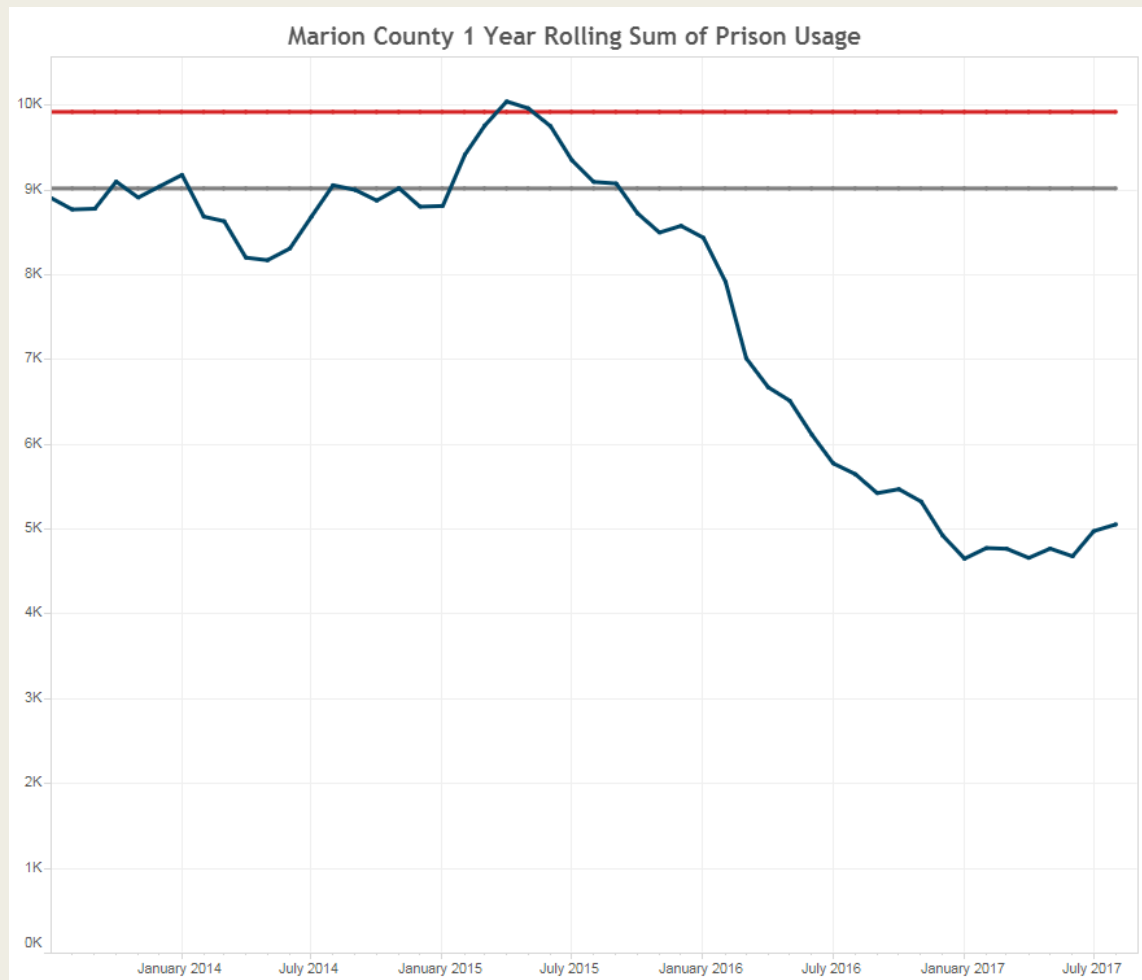
Marion County



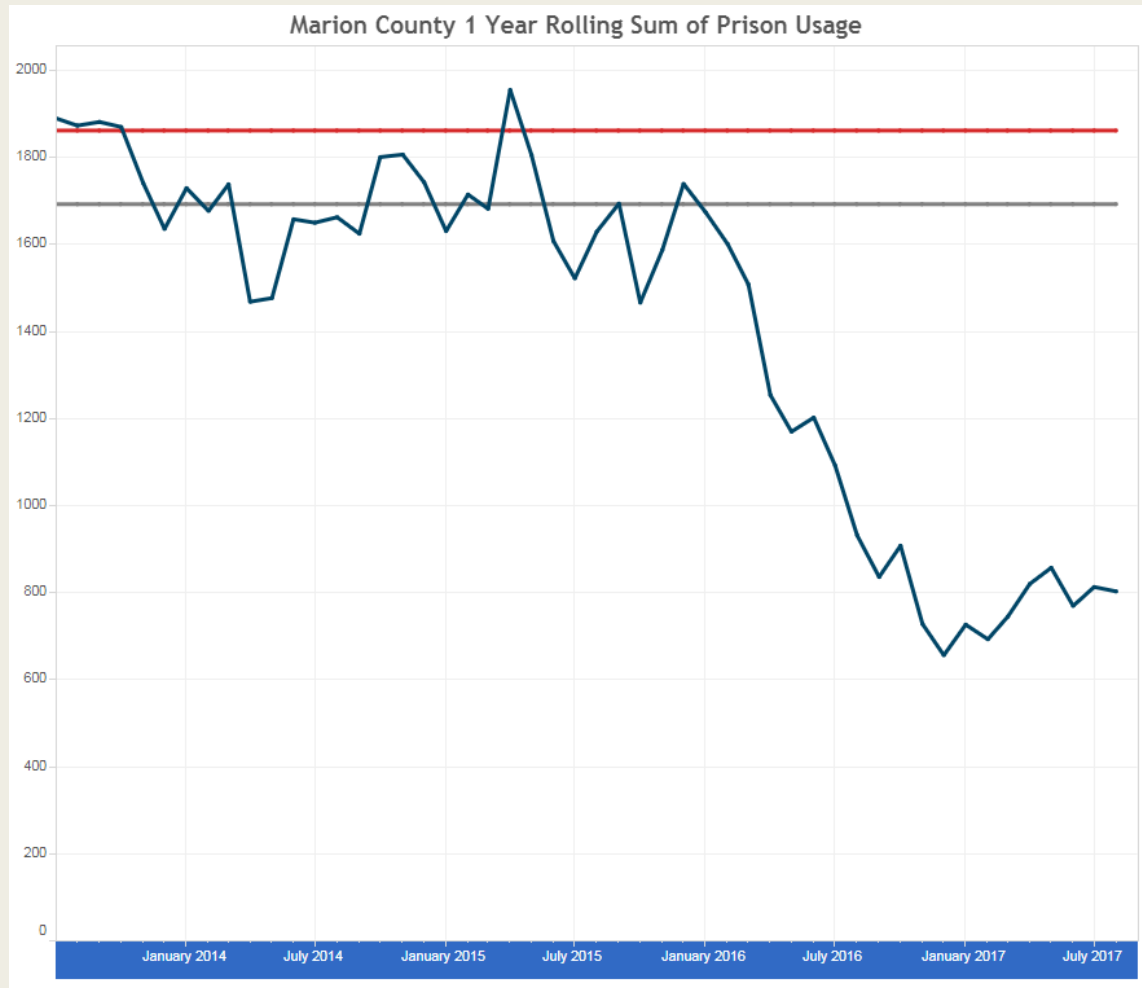


# PRISON USE

- County Past One Year Sum of Prison Months
- Baseline 7/1/12 to 6/30/15
- Baseline +10%

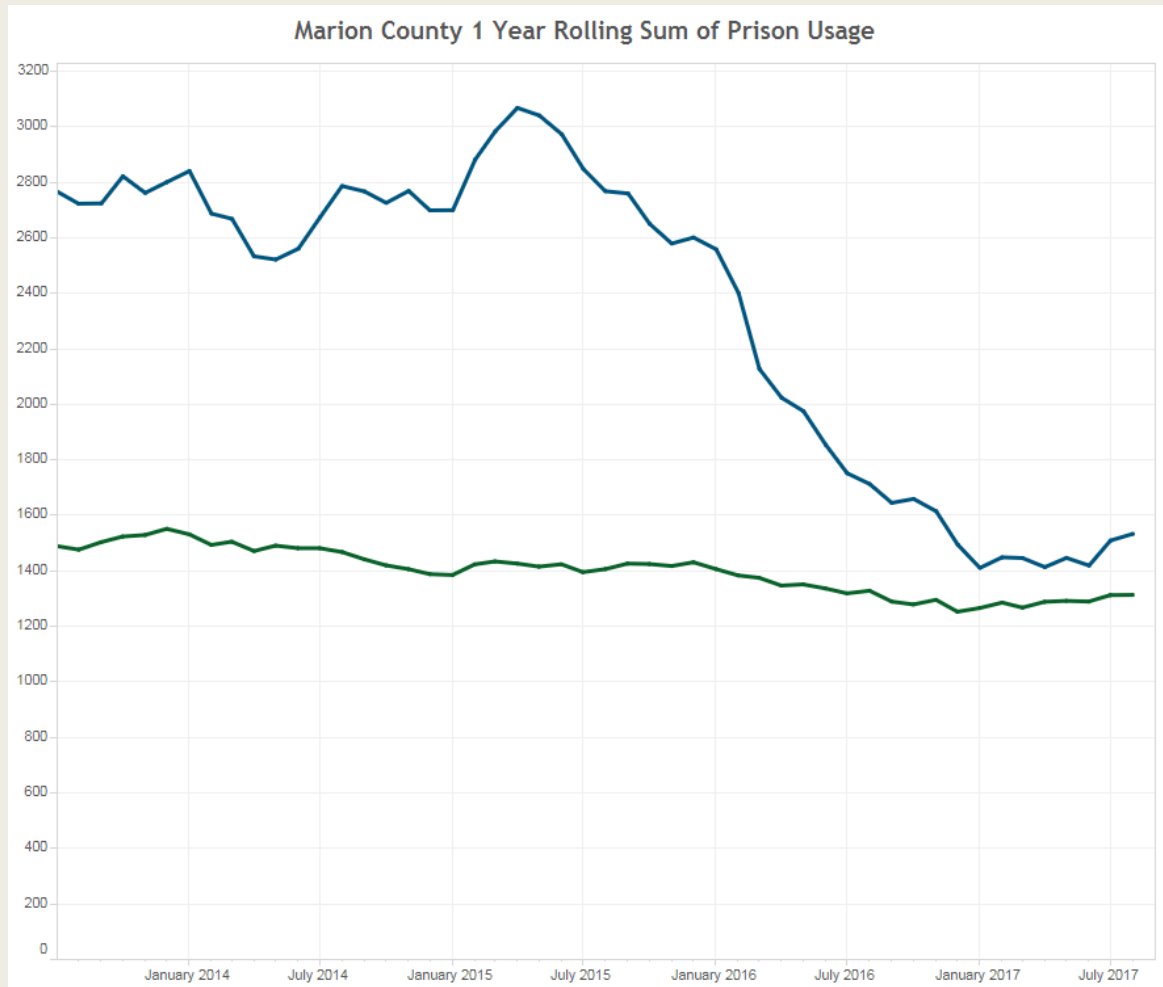


- County Past One Year Sum of Prison Months
- Baseline 7/1/12 to 6/30/15
- Baseline +10%

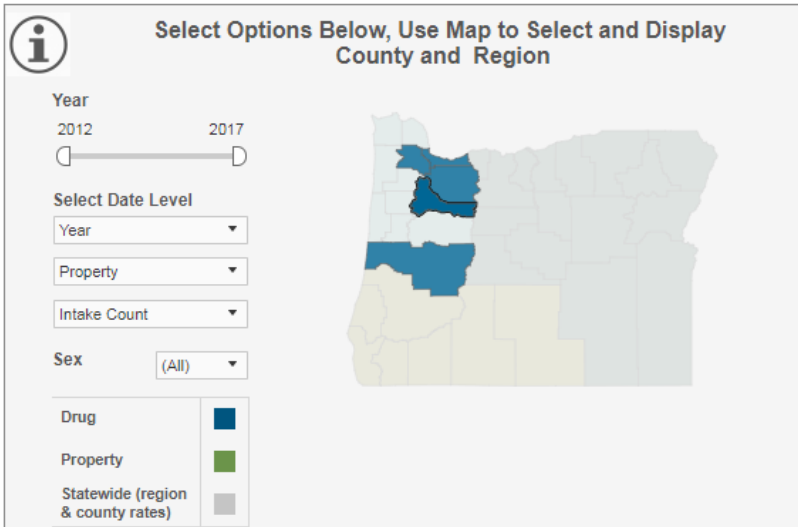


## Rates per 100,000

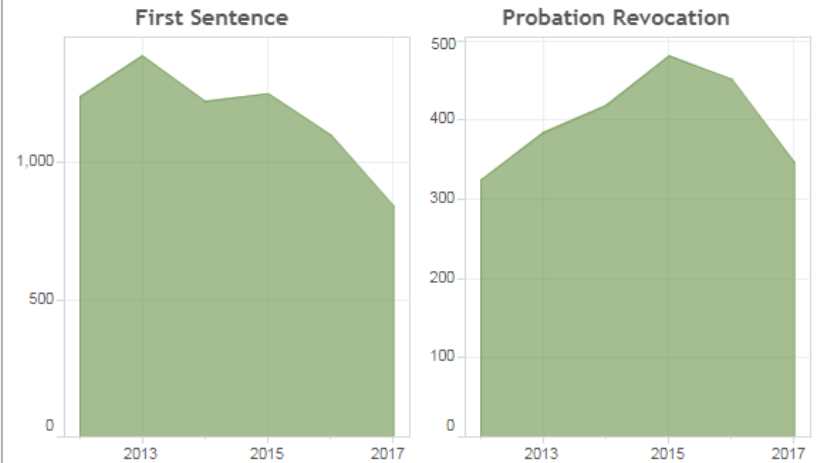
- County Past One Year Sum of Prison Months
- State Past One Year Sum of Prison Months



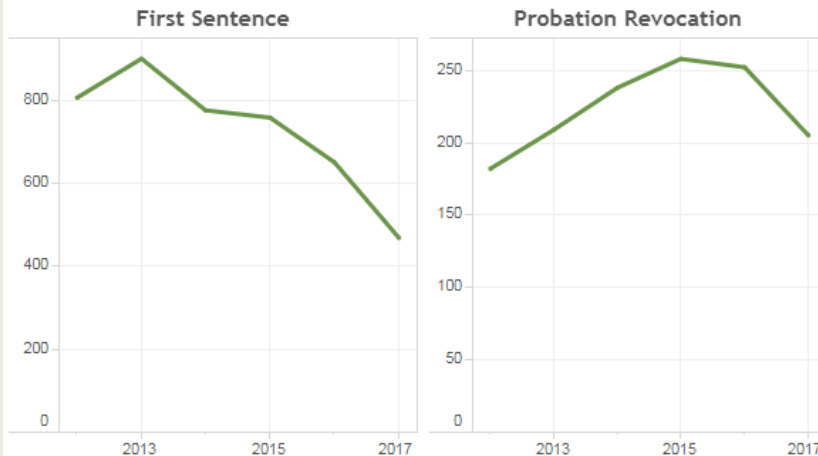
## What Do Drug and M57 Property Crime Intakes Look Like Over Time by Region and County?



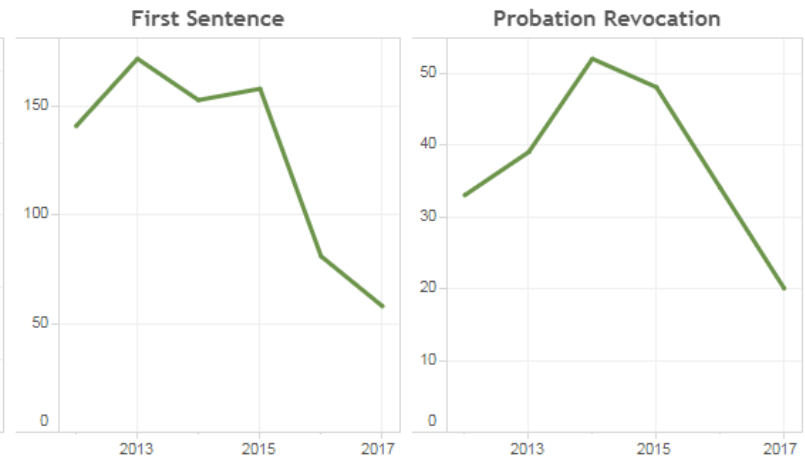
### Statewide



### Metro Region



### Marion County



# QUESTIONS?

- [ross.caldwell@oregon.gov](mailto:ross.caldwell@oregon.gov)
- 503-378-6229