

Message from the Clerk...

Dear Marion County Voter,

You are receiving this notice because you live in one of the cities or districts that are conducting a November 4 Election. Not all cities and districts are conducting an election this November. All Marion County and Oregon voters will be voting next year in the 2026 May Primary and the 2026 November General Election.

Please review this flyer for important dates and directions for making your voice count. Please contact the County Clerk’s office at 503-588-5041 with any questions. We are here to help.

We offer a free text and email notification service for you to track your ballot. Sign up at [www.marioncountyclerk.ballottrax.net/voter](http://www.marioncountyclerk.ballottrax.net/voter) or on our website.

Thank you for helping make democracy work by being an informed voter. You are welcome to come visit our office and observe the election processes.

Sincerely,

Bill Burgess  
Marion County Clerk

Official Marion County  
Ballot Drop Sites

The Marion County drop sites listed below will be open beginning October 15<sup>th</sup>. On Election Day, November 4<sup>th</sup>, drop sites will remain open until 8:00 pm. You DO NOT need to apply postage if you use an Official Marion County Drop Box or mail within the United States.

<b>Marion County Clerk</b> 555 Court St NE, Ste 2130 Salem	M-F 8am - 5pm <b>Election Day 7am - 8pm</b>
<b>Woodburn Public Library</b> 280 Garfield St, Woodburn	Curbside Dropbox 24 Hours
<b>Stayton Public Library</b> 592 N First Ave, Stayton	Curbside Dropbox 24 Hours

Registration Deadline for  
New Voters

The new Voter registration deadline for this election was October 14, 2025. A voter must be a US citizen, a resident, and at least 18 years old by Election Day. Previously registered Oregon voters can update their registration by Election Night. If a voter spoils or otherwise needs a replacement ballot, or needs help in marking their ballot, they can contact the Clerk’s Office.

Voting Instructions

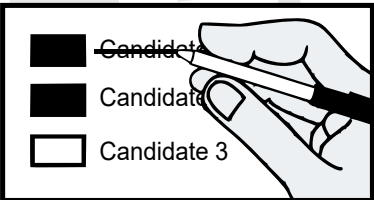
Making selections

Completely fill in the box to the left of your choices. Selecting more than the allowed choices is not permitted. Doing so will result in an overvote and no votes for the contest will be counted. Failing to fill in a box will result in an undervote and no votes for the contest will be counted.



How to correct a mistake

If you make a mistake, draw a line through the measure response or candidate’s name. Then, make the selection that you intended to make. To make your intent clear you may write, “this one” or a “ ” next to the selection of your choice.



Track Your Ballot

Sign up for updates about your Ballot  
from the Marion County Clerk

The Marion County Clerk is offering a program to voters in Marion County that allows them to track the status of their ballot through automated notifications.



Participating voters will have the option of receiving text, email, or voice alerts at several points on their ballot’s journey.

If you have any questions about this service, please call the Marion County Clerk’s Office at 503.588.5041.

**Sign up today to begin receiving messages:**  
[marioncountyclerk.ballottrax.net/voter](http://marioncountyclerk.ballottrax.net/voter)

Translation Services

Selected portions of this county voters’ pamphlet are available in Simplified Chinese, Korean, Marshallese, Russian, Spanish, and Vietnamese. These translations can be found online at [oregonvotes.gov/MarionVP](http://oregonvotes.gov/MarionVP)

本县选民手册的部分内容提供简体中文版本。可以访问 [oregonvotes.gov/MarionVP](http://oregonvotes.gov/MarionVP) 获取译本。

주 유권자 pamphlet의 선택된 부분은 한국어 준비되어 있습니다. 번역은 온라인 [oregonvotes.gov/MarionVP](http://oregonvotes.gov/MarionVP)에서 찾아볼 수 있습니다.

Mōttan melele ko emōj kelet ie ilo peba eo an ribout ilo county ewōr ilo Kajin Majol. Kwōmaron loe ukok kein online ilo [oregonvotes.gov/MarionVP](http://oregonvotes.gov/MarionVP)

Отдельные части брошюр избирателей этого округа доступны на русском языке. С данными переводами можно ознакомиться в Интернете по адресу: [oregonvotes.gov/MarionVP](http://oregonvotes.gov/MarionVP)

Algunas secciones de este folleto para votantes del condado están disponibles en español. Estas traducciones están disponibles en línea en [oregonvotes.gov/MarionVP](http://oregonvotes.gov/MarionVP)

Các phần được chọn trong tập thông tin cử tri quận này có bản ngôn ngữ tiếng Việt. Bản dịch có thể xem trực tuyến tại [oregonvotes.gov/MarionVP](http://oregonvotes.gov/MarionVP)

Marion County  
VOTERS' PAMPHLET

Special Election  
November 4 2025



555 Court St NE Ste 2130  
Salem OR, 97301

[www.co.marion.or.us/co/elections](http://www.co.marion.or.us/co/elections)

[elections@co.marion.or.us](mailto:elections@co.marion.or.us)

503-588-5041

# Measure 24-517

## St Paul Rural Fire Protection District

### Local Option Levy to Maintain Fire & Medical Emergency Response

**Question:** Shall the Fire District levy 1.08 per \$1,000 of assessed value for five years beginning in 2026-2027 for emergency operations? This measure may cause property taxes to increase more than three percent.

**Summary:** The St Paul Fire District provides fire, emergency medical, and rescue services to the residents of St Paul and the surrounding area. The fire district currently has 35 volunteers and 12 part-time paramedics.

If adopted, the levy funds would:

- Provide funding for 24/7 paramedic coverage.
- Provide funding to replace obsolete apparatus.
- Provide funding for the required maintenance of existing emergency response equipment and fire apparatus.
- Allow the purchase of firefighter personal protective equipment.
- Provide funding for the purchase of EMS and fire equipment.

Fire district emergency operations are funded through property taxes.

The requested rate will raise approximately \$243,300 in 2026-2027; \$252,700 in 2027-2028; \$262,400 in 2028-2029; \$272,500 in 2029-2030, and \$283,000 in 2030-2031. The estimated tax cost for this measure is an ESTIMATE ONLY based on the best information available from the county assessor at the time of estimate and may reflect the impact of early payment discounts, compression and the collection rate.

### Explanatory Statement:

The St. Paul Fire District is seeking approval of a local option levy in the amount of \$1.08 per \$1,000 of assessed value.

#### What Services does the District provide?

St. Paul Fire District is the first responder for fire, medical, and rescue emergencies in its service area. The District also provides fire prevention, fire investigations, public education and non-emergency public assistance.

#### Who does the District serve?

St. Paul Fire District serves an approximate 48 square mile area that includes the City of St. Paul and the surrounding area.

#### How is the District Funded?

St. Paul Fire District is funded through a permanent property tax base rate of 1.0622 cents per thousand assessed value and ambulance transport fees.

#### How would levy funds be used?

If approved, the levy funds would:

- **Provide 24/7 Paramedic Coverage** – Continue funding 24/7 part-time paid paramedic coverage, ensuring a part-time paramedic is on duty at all times, while maintaining our district's reliance on one volunteer EMT to respond alongside the paramedic for all emergency calls.
- **Replace Obsolete Apparatus** – The district has aging apparatus with no current plan for replacement. Levy funds would allow the district to develop a replacement schedule for upgraded equipment with safety features and technological advancements promoting firefighter and patron safety.
- **Provide Required Fleet Maintenance** – As the District's fleet ages maintenance cost rise and finding available parts for the equipment becomes more challenging. Levy funds will cover the increased costs in the maintenance budget.
- **Purchase Personal Protective Equipment** – Personal Protective Equipment does have

an expiration date. A set of turnout gear, that protects a first responder from fire injury, has a 10-year life expectancy. The district currently has several sets of turnouts outside this 10-year life expectancy.

- **Purchase EMS and Fire Equipment** – The District's EMS and fire equipment is also aging and will need future replacement soon. As an example, the district has a Life Pack Defibrillator model 12 which has reached its end of life and is technologically obsolete with no repair option. When this piece of equipment breaks it will force the district, which experiences a high number of motor vehicle crashes resulting in multiple patients, down to one medic available for response. Multiple patients require multiple medic response units, dispatching a second medic unit from a neighboring agency could result in delayed patient care.

#### What is the cost to the taxpayers?

The median assessed value for residential property in the St. Paul Fire District is \$ 309,185, the cost for this value would be approximately \$309.19 per year or about \$25.77 per month.

#### What if the levy is not approved?

While maintaining emergency response services would remain the top priority for St. Paul Fire District, if the levy is not approved, the fire district will not be able to fully meet the increasing emergency response costs or fund the much-needed equipment updates.

#### Want more information?

Visit [www.stpaulfire.org](http://www.stpaulfire.org)

No Arguments in Support or Opposition were filed