

# Budget Committee Approved Budget

## MARION COUNTY EXTENSION AND 4-H SERVICE DISTRICT



**Fiscal Year 2025-2026**



# Budget Committee Approved Budget Fiscal Year 2025-2026

Approved: May 1, 2025



## Budget Committee Members

Danielle Bethell – **Not present**

Colm Willis

Kevin Cameron

Destinee Schuster

Dana Castano

Amy Goulter-Allen

Budget Officer: Kelli Weese



**Marion County Extension and 4-H Service District  
2025-2026 Budget Committee Approved Budget  
Board of Directors & Appointed Officials**

<b>Position</b>	<b>Name</b>	<b>Term Expires</b>
Commissioner	Danielle Bethell Colm Willis Kevin Cameron	December 2028 December 2026 December 2026
<b>Position</b>	<b>Name</b>	
Budget Officer	Kelli Weese	



**Marion County Extension and 4-H Service District  
2025-2026 Budget Presentation  
Budget Calendar**

Prepare Budget Documents	March 1, 2025 – May 1, 2025
Publish First Notice of Budget Committee Meeting	April 23, 2025
Post Notice of Budget Committee Meeting on website	April 18, 2025
Budget Committee Meeting	May 1, 2025
Prepare Budget Summary	May 1, 2025 – May 28, 2025
Publish Budget Summary and Notice of Budget Hearing (5 to 30 days before hearing)	May 28, 2025
Public Hearing by Board of Directors	June 5, 2025
Board of Directors Adopts Budget, Makes Appropriations, Imposes Fees	June 5, 2025
Certify Fees to County Assessor	July 15, 2025





## **BUDGET MESSAGE**





## MARION COUNTY EXTENSION AND 4-H SERVICE DISTRICT

---

**GOVERNING BODY**

Danielle Bethell  
Colm Willis  
Kevin Cameron

May 1, 2025

Members of the Budget Committee, Board of Directors, and Citizens of Marion County:

**BUDGET OFFICER**

Kelli Weese

Courthouse Square  
555 Court St. NE,  
Suite 1236  
P.O. Box 14500  
Salem, OR 97309-5036  
(503) 588-7975  
(503) 373-4460 – FAX

[www.co.marion.or.us](http://www.co.marion.or.us)

This budget has been prepared in accordance with Oregon Revised Statutes. Funding for the Marion County Extension and 4-H service district (district) was approved by voters in Marion County on May 19, 2015, which established a permanent property tax rate to fund the operations of the Marion County OSU Extension and 4H Service District. The district has a permanent tax rate limit of \$0.05 per \$1,000 of assessed valuation. For tax year 2024-2025, the Tax Assessor imposed taxes of \$1,604,237.

In projecting for Fiscal Year 2025-26, the Marion County Tax Assessor's Office projects a 4-5% increase in revenues from the current year's tax assessment. This is budgeted at a 4.5% increase with an anticipated \$1,676,428 in property taxes to be imposed for the district. The tax assessor's office anticipates a collection rate of 94-95%, budgeted at 94.5%, the district is anticipated to yield a total of \$1,584,224. When combined with the collection of past due taxes and penalties, the total property tax revenue for FY 2025-2026 is projected to be \$1,615,224, representing an approximate tax collection rate of 97%. After adding net working capital, investment earnings and other miscellaneous revenues, the total of all resources available to expend within the recommended budget for Fiscal year 2025-2026 across both operations and capital reserves is \$3,705,337 which is a decrease from the Fiscal Year 2024-2025 budget of approximately \$101,786.

The district serves all 20-incorporated cities, as well as the 37-unincorporated areas of Marion County, and works in cooperation with Oregon State University Extension Service to bring important services, educational programs, agricultural research, and other support to local residents.

**Budget Process:**

Pursuant to Oregon law, the budget is received and approved by the Budget Committee consisting of the three members of the district governing body (Marion County Board of Commissioners) and up to three citizen members. The district governing body appoints the citizen members to the Budget Committee. The Chair and Vice Chair are selected each year from among the entire Budget Committee.

The Budget Committee may revise how the district will use the resources to provide programs to the residents of Marion County. All funds are required to be balanced in accordance with Oregon Budget Law per ORS 294.331.

All Budget Committee meetings are open to the public, have been appropriately noticed, and public testimony is encouraged.

Following approval of the Recommended Budget by the Budget Committee, The Committee Approved Budget will be presented to the district governing body. The district governing body will consider the budget for final adoption at a future meeting scheduled to take place on June 5, 2025.

### **Budget Structure:**

Staff have prepared a performance-based recommended budget for the district similar in structure to that of Marion County. The information provided in this document is structured in a way that represents how Marion County typically manages budgetary funds and services. Financial management, contracts/procurement, and administration are provided by Marion County staff as per the intergovernmental agreement between the Marion County and the service district.

The recommended budget for the district is shown on Page-19 and is titled "2025-2026 Recommended Budget." In addition, the budget committee packet includes information on property taxes; economic indicators; district financial policies; OSU Extension personnel detail, OSU Extension Service recommended budget and organizational chart; as well as narrative on OSU Extension Service positions and past volunteer engagement.

### **Significant Highlights for FY 2025-26**

- 1) This will be the 10<sup>th</sup> full year that the service district has been in operation.
- 2) The Ending Fund Balances for the program include:
  - a) The Operations Ending Fund Balance, is expected to have a 25% decrease between the FY 24-25 and FY 25-26 budget, with a projected year end reserve of \$926,288 for operations. These decreases are anticipated in part due to continued anticipated transfers into capital reserves for a future building project, as well as recent increases in OSU Extension costs.
  - b) The Capital Reserve Ending Fund Balance covers savings for a future construction project or office purchase for the OSU Extension Service. The Capital Reserve Ending Fund Balance is expected to have a 12% increase between FY 24-25 and FY 25-26 budget, with a projected year end reserve of \$1,095,026, due to budgeted transfer to capital reserves and increases in investment earnings.
- 3) For the OSU Extension Service, within line item 525185, Community Education Services:
  - a) For FY 24-25, the service was budgeted at \$1,419,740 within the adopted budget, while approved within the OSU Extension Budget at \$1,533,539, for a difference of \$113,799. This discrepancy is expected to be offset by the anticipated expenditures in FY 24-25 of \$1,256,009 resulting in a savings of \$163,731 compared to the budgeted amount. This savings is attributed to unfilled staff positions and other contributing factors.
  - b) For the proposed FY 25-26 budget, OSU Extension Service is anticipating to refill the Small Farms Outreach Program Coordinator position, increasing the costs to the district from 0.66 FTE to 1 FTE, for an increase in the position costs of approximately \$36,000. This increase is offset by a reduction in one-time expenditures from FY 24-25, including a reduction of \$50,000 for an architect, and a reduction of \$35,000 for a professor supporting groundwater issues, for a total reduction of \$7,276 in the OSU Extension Budget from FY 24-25 to FY 25-26.
- 4) Many of the items historically costed to line item 525999, 'Other Contracted Services', are proposed to be allocated to line item 525951, 'Community Based Distributions', to differentiate grant allocated funding from standing services provided by Marion County. Items proposed to be moved to 525951, 'Community Based Distributions', include:
  - a) \$50,000 for competitive soccer scholarships
  - b) \$150,000 for grants and other opportunities that present themselves throughout the year
  - c) In addition, \$50,000 is proposed to accommodate any additional opportunities that may occur for the fiscal year.
- 5) The remaining item within line item 525999, Other Contracted Services, includes:
  - a. \$84,000 for Marion County contracted management services

## **Operating Policies:**

In accordance with the formation of the district, the Board of Commissioners has specified the purpose of the district is to build a stronger economy by fostering successful agriculture and forestry businesses; healthy youth and families; sustainable communities; and efficient use of natural resources with education services including: applied research for farmers, family forest owners, and nursery growers to solve disease, insect, production, agricultural tourism, and conservation challenge.

The recommended budget for FY 2025-2026 maintains the principles previously adopted by the district board. Those guiding principles are:

- 1) Establishing stable funding for OSU Extension positions.
- 2) Establishing reserve funding for future capital and operational priorities.
- 3) Providing education and services to the public, including:
  - a) *Supporting water use needs within the agriculture community*
  - b) *Positive youth development opportunities*
  - c) *Support opportunities for lower-income youth*
  - d) *Support youth employment opportunities*

The district contracts with OSU Extension Service to provide staff and faculty who support volunteer-lead programs, such as 4-H, Master Gardener, Master Food Preserver, Food Safety, Nutrition, Master Woodland Manager, Master Naturalist, and Small Farm Development that are enjoyed by and available to Marion County residents. The district also contracts with, and/or provides grants to other entities to deliver positive youth development opportunities and to manage district-funded operations.

## **Conclusion:**

The Marion County Extension & 4H Service District provides an excellent resource to the residents of Marion County and delivers educational opportunities through the established partnership with the OSU Extension Service. The district continues to successfully and faithfully serve Marion County residents in a way that would not otherwise be possible. It is with great pleasure that I offer you this budget for your consideration.

Respectfully submitted,

Kelli Weese, Budget Officer  
Marion County Extension and 4-H Service District

# **Marion County Extension and 4-H Service District 2025-2026 Recommended Budget Presentation Appendix A - Property Taxes and Debt Limitations**

## **Property Taxes**

The district will certify its permanent tax rate in the amount of \$0.05 per thousand dollars of assessed valuation for Fiscal Year 2025-26. The total amount of property tax the district expects to levy on behalf of the Fund is \$1,676,428. Of this amount, the district expects to collect approximately 94.5% of the FY 2025-26 tax levy for a net collection of \$1,584,224. With the addition of uncollected taxes from previous and assessed penalties, the total tax revenues anticipated to be collected in FY 2025-26 are \$1,615,224, representing an approximate tax collection rate of 97%.

## **Property Tax Limitations**

In 1997, voters approved a constitutional amendment known as Ballot Measure 50. Ballot Measure 50 established a permanent tax rate limit for all local governments. The district's rate is \$0.05 per \$1,000 of calculated assessed value.

Other limits were imposed by Ballot Measure 5, another constitutional amendment approved by Oregon voters. This measure limits all local governments to a combined total of \$10-per-\$1,000 of assessed value in any fiscal year. If the total of all entities on the tax bill is greater than \$10-per-\$1,000 of assessed value, then the tax levy is compressed down to \$10-per-\$1,000, and each district receives a prorated portion of levied property taxes. The Marion County Tax Assessor is anticipating that the district will lose \$5,050 to compression in FY 2025-26.

## **Debt Limitations**

The district has a general obligation bonded debt limit for financing service facilities set by Oregon Revised Statute (ORS) 451.545. The district has no outstanding bonded debt so the debt limit is not applicable this year.

# **Marion County Extension and 4-H Service District 2025-2026 Budget Presentation Appendix B – Fiscal Policies and Definitions**

## **Overview**

The district accounts for its operations in a single governmental type fund. The fund has a single operating program for the purpose of budget allocations and appropriations. Governmental fund financial statements focus on near-term inflows and outflows of spendable resources and the balance of spendable resources available at the end of the fiscal year.

The district budget uses a modified accrual basis of accounting as required by ORS 294.305 to 294.565, which is the same method used by Marion County. This method recognizes revenues when they become available and measurable and, with a few exceptions, records expenditures when liabilities are incurred. Additionally, this method allows the district to focus on current-year obligations and short-term financial assets and liabilities.

## **Fund Accounting**

A fund is defined as a fiscal and accounting entity with a self-balancing set of accounts recording cash and other financial resources, together with all related liabilities and residual equities or balances, and changes therein, which are segregated for the purpose of carrying on specific activities or attaining certain objectives in accordance with special regulations, restrictions, or limitations.

Marion County Extension and 4-H service district has the following types of funds:

*Governmental Funds* – The district accounts for its operations in a single governmental type fund. The fund has a single operating program for the purpose of budget allocations and appropriations. Governmental fund financial statements focus on near-term inflows and outflows of spendable resources and the balance of spendable resources available at the end of the fiscal year.

*General Operations (service 8561)* - This service accounts for the general operating activities of the district. Its purpose is to carry out the legislative and executive functions of the district.

*MCE4H Capital Reserves (service 8562)* – Accounts for monies set aside for future capital projects, replacing equipment, construction and maintenance of buildings, and interest earned on those monies.

## **OSU Ending Fund Balance**

After conducting fiscal year end closing procedures, it's anticipated that OSU will have a fiscal year fund balance that is comprised of appropriated district dollars from the closing year. The fund balance belongs to the district. Therefore, prior to issuing the first quarter invoice of the next fiscal year, OSU shall notify the district, in writing, which states the amount of district dollars remaining at OSU as of June 30<sup>th</sup> of the preceding year. On the first quarter invoice, following the year end close, OSU shall credit the district for the entire amount stated in the previous year's fiscal year end letter.

## Definitions

*Net Working Capital* – This is unexpended revenue in one fiscal year and is available in the following year. Included in this would be costs associated with projects that carry forward from one year to the next. Also included are the unappropriated ending fund balances, contingencies, reserves, and any excess revenue or under expenditure from the previous year.

*Ending Fund Balance* – This represents amounts not appropriated for spending in the current year, including capital reserves.

*Expenditures* – A fund liability incurred for operation during a budgetary period.

*Materials and Services* – This includes operating expenses, management fees, contracted services (including contractual OSU Extension personnel costs), and support for agriculture education.

*Revenues* – This is income for the fiscal year, which is primarily derived through an ad valorem property tax rate of \$0.05 per \$1,000 assessed value and interest earnings.

*Contingency* – This is the amount set aside in the current fiscal year budget for unforeseen expenses.

*MCE4H Capital Reserves* – This represents the amount set aside for future capital expenditures.



# Marion County Extension and 4-H Service District 2025-2026 Budget Presentation Appendix C – Economic Indicators Data

## Economic Indicators

- In 2023, the median home price in Marion County, OR was \$383,300. Home values have continued to either stabilize or experience modest increases, largely influenced by high interest rates and a limited housing inventory. This trend does not currently pose a concern for the financial strength of the district. A significant margin remains between real market and assessed market values, ensuring that the district will continue to receive a minimum 3% annual increase in property tax revenues. This provides a stable foundation for long-term budgeting and financial planning.  
(<https://www.census.gov/quickfacts/fact/table/marioncountyor/PST045223>)
- Marion County continues to see a significant shortage of available single-family homes and rental units on the market, which is a significant factor in the high cost of housing.
- According to the USDA, Per-capita income in rural Oregon increased by 5.8% between 2022 and 2023, which is our most current data. For the period 2020-2023 the rural poverty rate increased from 13.9% to 15.8% and those with food insecurity were reported increased from 2021-2023 to 12.8%. The unemployment rate in rural Oregon from 2022-2023 dropped from 4.6% to 4.3%.
- The National inflation rate is starting to stabilize from its high point but is still at 2.4% for the past 12-months, which is likely to continue creating pressure for families to conserve their discretionary resources and could negatively impact both commerce, savings, rates, and homeownership in the coming years.
- Marion County continues to rank as the top county in Oregon for agricultural sales with 14% of all agricultural sales statewide.  
(source: <https://www.bls.gov/cpi/>)

The economic indicators show housing costs are continuing to rise along with mortgage interest rates. Per-capita income is rising but so is the poverty rate in the same time frame. The long-term strength of the economy will need to be watched to determine the persistence of inflation rates, discretionary spending rates, and the willingness of families or corporations to invest new resources in Marion County as high interest rates and inflation rates persist.

**Marion County's Agriculture Profile** (2022 is the newest data available from USDA)[https://www.nass.usda.gov/Publications/AgCensus/2022/Full\\_Report/Volume\\_1,\\_Chapter\\_2\\_County\\_Level/Oregon/](https://www.nass.usda.gov/Publications/AgCensus/2022/Full_Report/Volume_1,_Chapter_2_County_Level/Oregon/)

<b>Farm Information</b>	<b>2012</b>	<b>2017</b>	<b>2022</b>
Number of Farms	2,567	2,761	2,477
Farm Acreage	286,194	288,671	275,483
Average Acreage	111	105	111

<b>Farms by Size (2022)</b>	<b>Number of Farms</b>
-----------------------------	------------------------

1 to 9 acres	930
10 to 49 acres	901
50 to 179 acres	319
180 to 499 acres	186
500 to 999 acres	81
1,000 acres or more	60

<b>Farms by Value (2022)</b>	<b>Number of Farms</b>
------------------------------	------------------------

Less than \$49,999	90
\$50,000 to \$99,999	36
\$100,000 to \$199,000	93
\$200,000 to \$499,000	427
\$500,000 to \$999,999	945
\$1,000,000 to \$1,999,000	414
\$2,000,000 or more	470

**Fund 605 MC Extension 4H Service District  
FY 2025-26 Budget Committee Recommended Budget  
Department 85**

		2022-23	2023-2024	2024-2025	2024-25	2025-26	2025-26	2025-26	Notes	
		Actual	Actual	Adopted	Projected	Recommended Budget	Approved Budget	Adopted Budget	%+/-	
RESOURCES										
Taxes										
311100	Property Taxes Current Year	1,406,741	1,460,558	1,554,067	1,487,031	1,584,224	1,584,224		6.54%	Projected increase of 4.5% in collection of FY 24-25 Assessed Taxes per Tax Assessor's Office (\$1,604,237) at estimated 94-95% collection rate
311200	Property Taxes Prior Years	25,087	26,094	28,545	29,000	29,000	29,000		0.00%	Average collection over past 3-fiscal years
311300	Prop Tax Interest Penalties	1,722	2,284	2,000	2,000	2,000	2,000		0.00%	Based on Assessor's estimate
	Total Taxes	1,433,550	1,488,936	1,584,612	1,518,031	1,615,224	1,615,224	-	6.02%	Total Estimated total tax collection rate of 97%
Intergovernmental State										
332010	Chapter 530 Forest Rehab	1,690	2,785	1,785	1,900	1,800	1,800		-5.56%	Based on 2023-24 receipts
332993	Other State Revenues	-	-	-	-	-	-			
	Total Intergovernmental	1,690	2,785	1,785	1,900	1,800	1,800	-	-5.56%	
Interest										
361000	Investment Earnings -Operations	26,144	48,387	47,000	47,427	48,000	48,000		1.19%	Based on current interest rate trends
361000	Investment Earnings - Capital	5,810	10,540	9,500	18,824	19,000	19,000		0.93%	Based on current interest rate trends
	Total Interest	31,954	58,927	56,500	66,251	67,000	67,000	-	1.12%	
Other Fund Transfers										
381605	Transfer from MCE4H SD (Operations)	-	(397,965)	-	-	-	-	-		
381605	Transfer from MCE4H SD (Reserves)	-	397,965	-	-	-	-	-		
381999	Transfer from Other Funds (Operations)	-	-	(130,000)	(130,000)	(130,000)	(130,000)		0.00%	As per FY 2025-26 Budget
381999	Transfer from Other Funds (Reserves)	-	-	130,000	130,000	130,000	130,000		0.00%	As per FY 2025-26 Budget
	Total Transfer	-	-	-	-	-	-	-		
Settlements										
382100	Settlements	-	-	-	-	-	-			
	Total Settlements	-	-	-	-	-	-	-		
Net Working Capital										
392000	Net Working Capital Unrestricted	1,174,512	1,460,473	1,200,281	1,230,062	926,288	926,288		-32.79%	equals previous year's ending fund balance - transfer from operations to reserves
392000	Net Working Capital - Capital Reserve	401,866	407,696	963,945	816,202	1,095,026	1,095,026		25.46%	equals previous year's ending fund balance + transfer from operations to reserves
	Total Net Working Capital	1,576,378	1,868,169	2,164,226	2,046,264	2,021,313	2,021,313	-	-1.23%	
TOTAL RESOURCES		3,043,574	3,418,817	3,807,123	3,632,446	3,705,337	3,705,337	-	1.97%	
REQUIREMENTS										
Material and Services										
521190	Publications	-	250	-	-	-	-	-		
525150	Audit Services	4,620	4,750	4,500	4,500	5,500	5,500	-	18.18%	
525185	Community Education Services	930,602	1,039,118	1,419,740	1,256,009	1,526,263	1,526,263	-	6.98%	OSU Extension Service - Includes increase in Small Farms Coordinator position from 0.66 FTE to 1 FTE
525510	Legal Services	1,650	1,474	2,000	1,500	2,000	2,000	-	0.00%	
525715	Advertising	314	290	500	500	500	500	-	0.00%	
525930	Fair Events and Activities	17,000	36,700	22,000	17,000	22,000	22,000	-	22.73%	\$17,000 annual Marion County Fair Contribution, \$5,000 student interns at Fair.
525951	Community Based Distributions	-	-	-	-	200,000	200,000	-		For FY 25-26 - Move \$50,000 for Youth Soccer & \$150,000 for other projects or grants from Other Contracted Services to Community Based Distributions
525999	Other Contracted Services	121,018	186,300	295,703	225,000	84,000	84,000	-	-252.03%	For FY 25-26 - Other contracted services only contain 5% of revenues for MC Administration, remaining historic use (Soccer & Grants), moved to community based distributions
527210	Building Rental Private	95,396	97,579	100,225	100,225	103,000	103,000	-	2.69%	\$8,455.22 x 6-mo + \$8,666.60 x 6-mo = \$102,730.92 (reflects a 2.5% increase in rent)
527999	GASB 87 Adjustment	-	-	-	-	-	-	-		
528110	Liability Insurance Premiums	4,314	4,979	5,500	4,979	5,500	5,500	-	9.47%	Based on average increases from SDAO
529300	Dues and Memberships	689	1,113	1,421	1,420	1,450	1,450	-	2.09%	Includes dues, and memberships
529996	Amortization Lease Expense	-	-	-	-	-	-	-		
	Total Material and Services	1,175,603	1,372,554	1,851,589	1,611,133	1,950,213	1,950,213	-	17.39%	
Debt Service Interest										
542200	Lease Interest	(178)	-	-	-	-	-	-		
	Total Debt Service Interest	(178)	-	-	-	-	-	-		
Contingency										
571010	Contingency	-	-	100,000	-	100,000	100,000	-		Reserved for transfer to Capital Reserve if available
	Total Contingency	-	-	100,000	-	100,000	100,000	-		
Ending Fund Balance										
573010	Unapprop. Ending Fund Balance	-	-	752,089	1,056,288	411,099	411,099	-	-82.95%	5 months reserves payroll, rent, contracted expenses, and other Materials and Services in addition to excess revenues over expenditures.
573010	Unapprop.Ending Fund Bal. - Capital	-	-	1,103,445	965,026	1,244,026	1,244,026	-	22.43%	Reserve for future OSU Extension Service building/office space (Previous year actual + transfer for capital project)
	Total Ending Fund Balance	-	-	1,855,534	2,021,313	1,655,124	1,655,124	-	-22.12%	
TOTAL REQUIREMENTS		1,175,424	1,372,554	3,807,123	3,632,446	3,705,337	3,705,337	-	1.97%	



### Estimated Growth for MC Extension and 4-H District

Tax Year	Tax Rate	Assessed Value	% Change	Urban Renewal		Revenue	Compression	Revenue Less Compression	Additional Taxes/Penalties	Imposed Levy	Collection Rate	Net Revenue	% Change
				Excess Value	% Change								
2015-16	0.05	22,490,480,722		578,631,941		1,099,580.11	6,069.90	1,093,510.21	1,114.92	1,094,625.13	98%	1,070,652.84	
2016-17	0.05	23,371,520,094	3.92%	603,525,603	4.30%	1,140,309.52	4,908.08	1,135,401.44	3,033.63	1,138,413.15	98%	1,114,199.10	4.07%
2017-18	0.05	24,219,912,095	3.63%	640,681,076	6.16%	1,181,636.56	4,674.67	1,176,961.89	1,283.45	1,178,221.47	98%	1,151,098.81	3.31%
2018-19	0.05	25,344,013,124	4.64%	741,703,015	15.77%	1,232,746.80	4,995.76	1,227,751.04	3,424.64	1,231,175.68	98%	1,202,858.64	4.50%
2019-20	0.05	26,502,974,171	4.57%	840,568,260	13.33%	1,286,643.29	4,778.89	1,281,864.40	1,683.96	1,283,548.36	98%	1,254,052.42	4.26%
2020-21	0.05	27,618,295,240	4.21%	845,213,312	0.55%	1,342,706.16	4,829.34	1,337,876.82	1,811.19	1,339,688.01	98%	1,308,928.77	4.38%
2021-22	0.05	28,765,707,802	4.15%	914,005,746	8.14%	1,395,605.74	4,903.09	1,390,702.65	2,365.30	1,393,067.95	98%	1,361,110.97	3.99%
2022-23	0.05	30,223,197,362	5.07%	966,694,757	5.76%	1,466,373.69	4,695.48	1,461,678.21	1,461.42	1,463,139.63	98%	1,429,604.47	5.03%
2023-24	0.05	31,758,640,918	5.08%	1,157,850,936	19.77%	1,533,580.47	4,797.44	1,528,783.03	3,225.76	1,532,008.79	97%	1,486,048.53	3.95%
2024-25	0.05	33,376,039,145	5.09%	1,305,686,816	12.77%	1,603,517.62	5,990.11	1,597,527.51	1,683.75	1,599,211.26	97%	1,551,234.92	4.39%
Est. 2025-26	0.05	34,870,000,000	4.48%	1,230,000,000	-5.80%	1,682,000.00	6,000.00	1,676,000.00	2,000.00	1,678,000.00	97%	1,627,660.00	4.93%

Estimated figures as of 4/17/2025



## NET WORKING CAPITAL BUDGET JUSTIFICATION

<u>Department:</u>	Marion County Extension 4H Service District	
<u>Fund Number and Name:</u>	605	
<b>FY 2024-25 Net Working Capital Calculation</b>		
	<b>FY 25-26 Est</b>	Guideline
<b>RESOURCES</b>		
Net Working Capital	2,021,313	actual, as recorded in FIMS
General Fund	-	usually the amount budgeted
Chapter 530 Forest Rehab.	1,800	estimated, may be different than budget amount
Interest	67,000	estimated, may be different than budget amount
Property Tax Revenue	1,615,224	estimated, may be different than budget amount
Transfers In	100,000	usually the amount budgeted
total	3,805,337	
<b>EXPENDITURES</b>		
Personal Services (Community Education Services)	1,526,263	estimated, is likely to be different than budget amount
Materials & Services	423,950	estimated, is likely to be different than budget amount
Capital Outlay	-	estimated, may be different than budget amount
Special Payments	-	estimated, may be different than budget amount
Transfers Out	100,000	Transfer of Contingency
total	2,050,213	
<b>UNEXPENDED BALANCE</b>	1,755,124	<b>use this as the Net Working Capital for FY 24-25</b>
<b>INCLUDES CAPITAL RESERVE FUNDS</b>		

\*\*based on current expenditures at the end of the second quarter



# MARION COUNTY EXTENSION AND 4-H SERVICE DISTRICT

## PROTOCOL FOR CALCULATING MANAGEMENT SERVICES FEE FOR SERVICES PROVIDED BY THE COUNTY TO THE DISTRICT

**GOVERNING BODY**  
Kevin Cameron  
Sam Brentano  
Janet Carlson

**BUDGET OFFICER**  
Tamra Goettsch

Courthouse Square  
555 Court St. NE, 3rd Flr  
P.O. Box 14500  
Salem, OR 97309-5036  
(503) 588-7975  
(503) 373-4460 – FAX

[www.co.marion.or.us](http://www.co.marion.or.us)

1. Development of Fee Rate: The Marion County Extension and 4-H Service District (MCE4H) shall pay Marion County 5% of the imposed levy amount received from the Marion County Assessor's Office for management services that are provided to the district annually.
2. Payment for Services: After the end of each fiscal year, yet prior to the close of the fiscal year financials, Marion County Community Services shall invoice the MCE4H for services provided by Marion County to the district, as outlined in #1.
  - a. Community Services shall distribute the funds as follows:
    - i. Legal Counsel – Payment for actual legal counsel billings received for services rendered to the district within each fiscal year shall be paid first from the 5% calculated amount.
    - ii. Of the remaining funds, payment shall be made to the following departments according to the reflected percentages:
      - Community Services – 60%
      - Business Services – 20%
      - Finance – 20%.
3. Approval by Governing Body: The Marion County Extension and 4-H Service District Governing Body shall approve the total Management Services Fee amount through its annual budget, based on the above mentioned protocol.

f

Approved: June 7, 2016

Imposed Tax Levy	\$ 1,584,223.94
5% of levy	\$79,211.20
Legal Fees (Actual)	1,500.00
	<hr/>
	\$80,711.20

Comm Services 60%	\$48,426.72
Business Services 20%	\$16,142.24
Finance 20%	\$16,142.24
	<hr/>
<b>Total</b>	<b>\$80,711.20</b>



**OSU EXTENSION SERVICES BUDGET AND PROGRAM RECOMMENDED DETAILS**



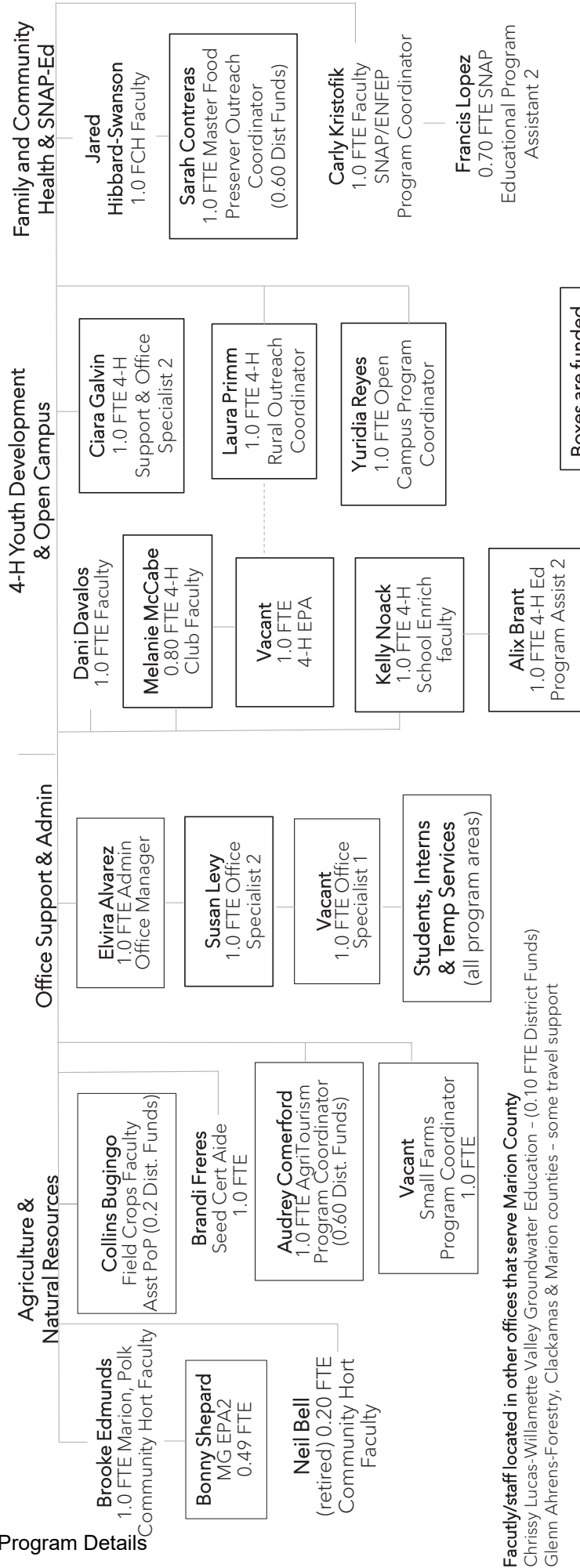


## Oregon State University Extension Service

**Kristopher Elliot**  
Vice Provost for Extension  
& Engagement  
Director of Extension

**Richard Riggs**  
Western Regional Director

## Marion County, Proposed Fiscal Year 2025-2026



Boxes are funded  
by Service District

Updated 4/9/2025

**Faculty/staff located in other offices that serve Marion County**  
Chrissy Lucas-Willamette Valley Groundwater Education - (0.10 FTE District Funds)  
Glenn Ahrens-Forestry, Clackamas & Marion counties - some travel support

**Other services supported by District**  
OSU North Willamette Research & Extension Center  
Youth work/internships  
Youth soccer programs



**Marion County Extension & 4-H Service District**

**FY 25-26 DRAFT Budget**

**OSU Extension Contracted Services - Personnel Budget Detail**

**Updated 04/9/2025**

<b>POSITION</b>	<b>NAME</b>	<b>FTE</b>	<b>FY 25-26 PROJECTED FTE COST</b>	<b>DISTRICT FTE</b>	<b>DISTRICT BUDGET</b>
4-H Club and Camp Coordinator	McCabe, Melanie	1.00	120,126	0.80	96,101
4-H School Enrichment Coordinator	Noack, Kelly	1.00	109,156	1.00	109,156
4-H Education Program Assistant	Brant, Alix	1.00	92,147	1.00	92,147
4-H Office Specialist 2	Galvin, Ciara	1.00	82,660	1.00	82,660
4-H Outreach Coordinator - Rural Marion Co	Primm, Laura	1.00	104,172	1.00	104,172
4-H Education Program Assistant	Vacant	1.00	39,384	1.00	39,384
Small Farms Outreach Coordinator	Vacant	1.00	104,930	1.00	104,930
Agritourism and Marketing	Comerford, Audrey	1.00	105,054	0.60	63,032
Field Crops, Marion/Clackamas	Bugingo, Collins	1.00	140,199	0.20	28,040
Groundwater Education Program Coordinator	Lucas, Christina	1.00	120,854	0.10	12,085
Administrative Office Manager	Alvarez, Elvira	1.00	114,073	1.00	114,073
Office Specialist 1	TBD	1.00	72,763	1.00	72,763
Office Specialist 2	Levy, Susan	1.00	87,077	1.00	87,077
Open Campus/Juntos Outreach Coordinator	Reyes, Yuridia	1.00	106,843	1.00	106,843
Food Safety Program Coordinator	Contreras, Sarah	1.00	102,052	0.60	61,231
Community Horticulture Education Program Assistant	Shepard, Bonny	0.49	42,569	0.49	42,568
Students/Interns	TBD	n/a		n/a	50,000
<b>TOTALS</b>		<b>15.49</b>	<b>1,544,059</b>	<b>12.79</b>	<b>1,266,263</b>

**Marion County Extension & 4-H Service District**  
**FY 25-26 DRAFT Proposed Budget**  
**OSU Extension Contracted Services**

	<b>FY 23-24 ADOPTED</b>	<b>FY24-25 ADOPTED</b>	<b>FY25-26</b>
<b>CONTRACTED SERVICES</b>			
Personnel (Wages & Benefits)	900,038	1,280,039	1,266,263
Various Income	(1,100)	(1,500)	(1,500)
Service Credits (cost share)	(3,330)	(4,000)	(4,000)
Office, Operating, Instructional Supplies	11,000	21,000	20,000
Minor Equipment (under \$5,000)	15,000	15,000	15,000
Telecommunications	15,000	15,000	15,000
Line & Network Access Charges	15,000	15,000	15,000
Postage/Freight	3,500	3,500	3,500
Utilities	1,500	2,000	2,000
Building Equipment and Repairs	2,000	2,500	2,500
Equipment Rental	3,000	3,000	3,000
Other Professional Services	17,000	50,000	50,000
Insurance, Licenses, Dues, Memberships	3,500	3,500	3,500
Duplicating, Printing, Publishing	12,500	12,500	12,000
Public Education Materials	6,000	8,000	8,000
Advertising, public relations, hosting	8,000	8,000	8,000
Travel, Professional Development, Startup	50,000	50,000	50,000
North Willamette Research & Extension Center	50,000	50,000	58,000
<b>Total Costs</b>	<b>1,108,608</b>	<b>1,533,539</b>	<b>1,526,263</b>

Unclassified Salaries

Unclassified Employees																											
Employee Name (LFM)	Employee ID Number	Annual Rate @	Percent Salary Increase	Annual Rate @	FTE	PCT	Total FTE	Jul-25	Aug-25	Sep-25	Oct-25	Nov-25	Dec-25	Jan-26	Feb-26	Mar-26	Apr-26	May-26	Jun-26	Salary Total	Health Insurance	Employee Retirement %	Total Variable OPE	OPE Total	Grand Total	OPE %	
		7/1/2025	3.00%	7/1/2025																	20,096	28.89%	8.28%				
Alvarez, Elvira	931-263-871	66,516	3.00%	68,511	1.00	100	1.00	5,709	5,709	5,709	5,709	5,709	5,709	5,709	5,709	5,709	5,709	5,709	5,709	68,511	20,096	19,793	5,673	45,562	114,073	66.50%	
Bugingo, Collins	934-619-158	85,008	3.00%	87,558	1.00	20	0.20	1,459	1,459	1,459	1,459	1,459	1,459	1,459	1,459	1,459	1,459	1,459	1,459	17,512	4,019	5,059	1,450	10,528	28,040	60.12%	
Comerford, Audrey	931-802-827	60,132	3.00%	61,936	1.00	60	0.60	3,097	3,097	3,097	3,097	3,097	3,097	3,097	3,097	3,097	3,097	3,097	3,097	37,162	12,058	10,736	3,077	25,871	63,032	69.62%	
Contreras, Sarah	934-319-902	58,008	3.00%	59,748	1.00	60	0.60	2,987	2,987	2,987	2,987	2,987	2,987	2,987	2,987	2,987	2,987	2,987	2,987	35,849	12,058	10,357	2,968	25,383	61,231	70.80%	
Lucas-Woodruff, Chrissy	931-266-972	71,316	3.00%	73,455	1.00	10	0.10	612	612	612	612	612	612	612	612	612	612	612	612	7,346	2,010	2,122	608	4,740	12,085	64.53%	
McCabe, Melanie	930-685-569	70,800	3.00%	72,924	1.00	100	1.00	6,077	6,077	6,077	6,077	6,077	6,077	6,077	6,077	6,077	6,077	6,077	6,077	72,924	20,096	21,068	6,038	47,202	120,126	64.73%	
Noack, Kelly	931-537-336	63,036	3.00%	64,927	1.00	100	1.00	5,411	5,411	5,411	5,411	5,411	5,411	5,411	5,411	5,411	5,411	5,411	5,411	64,927	20,096	18,757	5,376	44,229	109,156	68.12%	
Primm, Laura	932-459-802	59,508	3.00%	61,293	1.00	100	1.00	5,108	5,108	5,108	5,108	5,108	5,108	5,108	5,108	5,108	5,108	5,108	5,108	61,293	20,096	17,708	5,075	42,879	104,172	69.96%	
Reyes, Yuridia	932-460-506	70,020	3.00%	72,121	1.00	100	1.00	6,010	6,010	6,010	6,010	6,010	6,010	6,010	6,010	6,010	6,010	6,010	6,010	72,121	20,096	8,655	5,972	34,722	106,843	48.14%	
Unclassified		Totals					6.50	36,470	36,470	36,470	36,470	36,470	36,470	36,470	36,470	36,470	36,470	36,470	36,470	\$ 437,644	130,624	114,254	36,237	281,115	718,758	64.23%	

Classified Salaries

Classified Non-IT Employees																																
Employee Name (LFM)	Employee ID Number	Acct	Annual Rate @	Anniv. Date	Salary Grade	Current Step	Step @ Anniv.	COLA Increase	COLA	FTE	PCT	Total FTE	Jul-25	Aug-25	Sep-25	Oct-25	Nov-25	Dec-25	Jan-26	Feb-26	Mar-26	Apr-26	May-26	Jun-26	Salary Total	Health Insurance	Employee Retirement %	Total Variable OPE	OPE Total	Grand Total	OPE %	
			7/1/2025					11/1/2025	3.00%																52,527	20,096	28.89%	8.28%				
Brant, Alix	930-669-707	10301	50,472	2/1/2026	18	6	7	11/1/2025	3.00%	1.00	100	1.00	4,206	4,206	4,206	4,206	4,332	4,332	4,332	4,541	4,541	4,541	4,541	4,541	52,527	20,096	15,175	4,349	39,620	92,147	75.43%	
Galvin, Ciara	934-564-713	10301	44,244	4/1/2026	17	4	5	11/1/2025	3.00%	1.00	100	1.00	3,687	3,687	3,687	3,687	3,798	3,798	3,798	3,798	3,958	3,958	3,958	3,958	45,611	20,096	13,177	3,777	37,050	82,660	81.23%	
Levy, Susan	934-562-912	10301	46,116	9/1/2025	17	5	6	11/1/2025	3.00%	1.00	100	1.00	3,843	3,843	4,018	4,018	4,139	4,139	4,139	4,139	4,139	4,139	4,139	4,139	48,830	20,096	14,107	4,043	38,246	87,077	78.32%	
Shepard, Bonny	934-658-769	10301	60,804	2/1/2026	20	8	9	11/1/2025	3.00%	0.49	100	0.49	2,483	2,483	2,483	2,483	2,557	2,557	2,557	2,686	2,686	2,686	2,686	2,686	31,033	-	8,966	2,570	11,535	42,568	37.17%	
Classified			Totals									3.49	14,219	14,219	14,394	14,394	14,826	14,826	14,826	15,163	15,163	15,324	15,324	15,324	\$ 178,001	60,288	51,425	14,739	\$126,451	304,453	71.04%	



**From:** [Riggs, Richard C](#)  
**To:** [Alvarez, Elvira](#)  
**Subject:** Fwd: Request for FY25-26 Financial Support for NWREC  
**Date:** Thursday, February 13, 2025 5:16:49 AM

---

**From:** "Angima, Sam" <Sam.Angima@oregonstate.edu>  
**Date:** February 12, 2025 at 5:12:47 PM PST  
**To:** communityservices@co.marion.or.us  
**Cc:** cwillis@co.marion.or.us, "Simonich, Staci Lynn" <staci.simonich@oregonstate.edu>, "Elliott, Kristopher" <kristopher.elliott@oregonstate.edu>, "Donkin, Shawn" <shawn.donkin@oregonstate.edu>, "Riggs, Richard C" <richard.riggs@oregonstate.edu>

**Subject: Request for FY25-26 Financial Support for NWREC**

Dear Chris Eppley – Marion County Budget Officer,

I am writing on behalf of the OSU North Willamette Research and Extension Center (NWREC) in Aurora to express our sincere gratitude for the ongoing support Marion County has provided over the years to foster agricultural economic development for its residents. Our programs cover a wide range of areas, including fruit trees, nursery management, integrated pest management (IPM), agrivoltaics, berry crops, IR-4 pesticide research, small farms, plant pathology, Christmas trees, and vegetable crops. At NWREC, we are not just responding to challenges—we are driving progress, pioneering solutions, and shaping the future of agriculture in the Willamette Valley. We also have robust programs for youth who want to learn more about farming and become farmers in the future. I would be pleased to present some of the cutting-edge research and Extension highlights of these programs during the Extension annual budget meeting with the commissioners.

We are very grateful for the financial support Marion County offered in fiscal year 2024-2025 of \$56,000, up from \$50,000 in fiscal year 2023-2024 – thank you. We really appreciate the trust our elected leaders have put in us with this increased funding knowing you have competing priorities in your county. We are continually faced with increased costs for conducting research and for FY25-26 we are requesting financial support of \$64,200 to support NWREC to meet our expanded research, outreach, and educational initiatives. This level of funding is 3% more than we requested last year (\$62,333) and is based on Marion County's agricultural share of the market value, as evidenced by the most recent farm census data.

Thank you for your time and ongoing support.

Sincerely,  
Sam Angima and Shawn Donkin

Interim Co-Directors  
North Willamette Research and Extension Center College of Agricultural Sciences  
Oregon State University  
OSU Extension Service and Program details



## **2024 DEPARTMENT VOLUNTEER & HOUR REPORT**

*Information collected on this form is used to compile the Marion County Volunteer Annual Report. All county departments with volunteers (including interns and volunteer advisory boards/committees) contribute to this publication. During National Volunteer Week in April, highlights of the report are presented to the Board of Commissioners. Information from the report is used throughout the year in a variety of ways.*

Contact Name: Elvira Alvarez, Administrative Office Manager

Department: OSU Extension Service, Marion County

### **Extension Programs with OSU Faculty Funded by the Service District**

#### **OSU Extension 4-H Youth Development (McCabe, Noack, Primm, Brant, Rousch and vacant Office Specialist 2)**

4-H Youth Development relies on the volunteers to help our 4-H Staff to reach youth in Marion County using researched-based information and positive youth development practices. 4-H volunteers work directly with youth engaging them in out-of-school time activities that promote positive youth development and learning. Each 4-H Volunteer Leader receives an introductory training in 4-H, Positive Youth Development and the Oregon 4-H Youth Thriving Model as well as yearly Child Protection Training. All volunteers receive additional trainings throughout the year and a criminal history check. At minimum each 4-H Club volunteer, donates 60 hours a year working directly with youth in Marion County. 4-H programming in the county serves traditional club-based programs, non-traditional community outreach and school partnerships and rural communities across Marion County.

#### **OSU Open Campus and Juntos Program (Reyes)**

OSU's Open Campus and Juntos program provides local access to education and career pathways through community-based partnerships and unique programming, meeting needs of the Oregon communities. Our goals are college and career access, degree completion and community vitality. Both programs offer a variety of family engagement workshops, individual student mentoring, college visits, campus and more. The OSU Open Campus and Juntos program arrived in 2021.

## OSU Extension Small Farms (Vacant)

The Small Farms program improves the economic and environmental sustainability of small farms in Marion County by employing appropriate scale production and marketing techniques. The program works toward improving small farm horticultural production and small-scale livestock, poultry & forage production through a wide variety of classes, fostering farmer to farmer engagement and education, with the goal of improving stewardship, land management and conservation practices, and alternative and special marketing suited for small farm businesses. Small Farms offers educational programs that help new and prospective small farmers to learn the ins and outs of small-scale agriculture and business.

## OSU Extension Agritourism (Comerford)

The OSU Extension Service agritourism program in Marion County fosters agriculture and tourism connections through researched-based knowledge and education and seeks to strengthen the understanding of agritourism and farm-direct sales to build financially viable farms, encourage sustainable practices and industry resilience through networks and educational resources.

Agritourism is a blend of the agriculture and tourism industries, and business practices that connect consumers with farmers, farmland, and farm products, usually at the farm. Agritourism benefits farmers, value-added producers, consumers, and communities by increasing resources for farms, value-added products and operations, promoting farm viability and sustainability, luring long distance visitor travel to farms to look and learn, educating consumers about local farm products, and the positive social, economic, and environmental impact of farming. Agritourism accounts for a \$985 million economic impact in the nine counties of the Willamette Valley including 9,000 on-farm jobs and 2,000 off-farm jobs across the study area.

## OSU Extension Field Crops (Bugingo)

Extension Field Crops delivers educational programming via large grower meetings, field days, presentations at regional industry events (such as various crop commissions) and through in-person sites visits, phone, and emails. The program regularly publishes Extension guides, factsheets, technical reports, and online resources, and delivers digital communications through a quarterly newsletter and social media platforms. This position is funded by Marion County at 0.20 FTE and state funded at 0.80 FTE.

## OSU Extension Groundwater Education Program (Lucas-Woodruff)

The goal of the Well Water Program is to help Oregonians protect the groundwater that supplies their drinking water through education. County residents can have their well water tested for nitrates for free and consult with the well water specialist regarding potential sources of contamination. Visit their website at [wellwater.oregonstate.edu](http://wellwater.oregonstate.edu) to look over the many publications available to help well water owners maintain their facilities in good working order.

## OSU Extension Service Master Gardeners (Shepard)

The Marion County Master Gardeners (MGs) are supported by state funded Associate Professor (practice) Brooke Edmunds and the District funds a half-time (0.49 FTE) EPA, Bonny Shepard, start date of January 1, 2025. The MGs continue to develop the Marion Garden, their 1.75-acre demonstration garden behind the Marion County Health Department. Management of the garden is entirely supported by volunteer generated funds. The garden is utilized for multiple monthly workshops, including topics like tree fruit and berry pruning, rose management, food gardening topics and pollinator health.

## OSU Extension Service Family & Community Health (Contreras)

Master Food Preservers are trained and then re-certified annually through OSU Extension Service, Marion County, to provide education to the community about safe food preservation and storage practices. The program is supported by Dr. Jared Hibbard-Swanson who supervises activities regionally and statewide, including Marion County Outreach Program Coordinator, Sarah “Sarita” Contreras. After completing the required training and annual recertification, Master Food Preservers give back by volunteering in the community, passing their knowledge onto local home food preservers. These learned skills help food preservers increase access to local, seasonal food year-round, reduce foodborne illnesses and minimize food waste.

In addition to answering phone and email food safety questions, Master Food Preservers tested some new food preservation recipes and products from leading brands, sharing their results with the community online. Other activities include testing pressure gauges (almost 100 tested in 2024), staffing booths, teaching food preservation classes, nutrition, and cooking classes. Master Food Preservers partnered with 4-H and SNAP-Ed to teach a series of farm field trips at the Marion Polk Food Share Youth Farm to youth in the community in the fall. Ms. Contreras serves the Marion, Polk and Yamhill counties through a shared funding partnership model.

## **Extension Faculty (not funded by Marion County) but receiving administrative support**

### **OSU Extension Forestry (Ahrens)**

Family forest owners and Christmas tree growers in Marion County are primary clients for the Forestry and Natural Resources program that serves about 3,500 woodland owners with 83,000 acres. To promote successful tree and forest management across a wide range of needs, Extension Forestry education included classes, workshops, publications, and individual consultations in-person by e-mail, phone, and field visits. Priority issues for clients included forest damage and reforestation concerns related to fire, ice, and drought, insects, and disease. OSU Extension Forestry has worked collaboratively with OSU Extension Fire Program (mid-valley) to address needs of land and homeowners in Marion County.

### **OSU Extension 4-H Youth Development (Davalos)**

Marion County's 4-H Extension is actively seeking to reach underserved populations in addition to our currently served communities. Among these populations are families who do not speak English, youth with neuro divergent brains, individuals with physical disabilities and youth with social restrictions. In response to these needs, 4-H has provided various programs seeking to address these populations with programs such as the 4-H Questing Clovers Retreat, 4-H makerspace, the 4-H Allied Guilds Gamers Club, and various organizational partnerships.

### **USDA Supplemental Nutrition Assistance Program - Education (Kristofik)**

USDA SNAP-Ed partners with OSU Extension to deliver nutrition education and work on healthy food access initiatives with schools and underserved communities in Marion County. Carly Kristofik is the program coordinator and has one EPA assisting her, Francisca Lopez. Programs and materials are delivered in English and Spanish. SNAP-Ed receives some travel support funds from the service district.

### **Community Horticulture, Master Gardeners (Edmunds)**

The OSU Extension Service Master Gardener program in Marion County trained 38 new volunteers in 2024. These new volunteers and an additional 181 returning volunteers donated a total of 15,600 hours of community service in the county in 2024. Volunteers staff a year-round help desk at the Extension office, answering hundreds of gardening questions in-person, by phone and online from across the county. Volunteers also contribute a weekly radio program on KBZY 1490 radio in Salem. Volunteers reached communities in Scotts Mills with Seed to Supper program (food gardening on a budget), Silverton (sharing on native plants), Detroit (providing input on a park damaged by the wildfires and a new community garden), providing garden advice at community festivals in Stayton and Aumsville, and helping with a rain garden installation in Keizer.

## **Faculty serving Marion County, not supported by Marion County funds**

### **OSU Extension Livestock and Forages and Dairy Management (White)**

The Regional Livestock, Forages and Dairy specialist faculty is housed within Polk County and serves beef , dairy and other livestock stakeholders across the Willamette Valley and Tillamook County to conduct applied research and serve the needs of the industry.

### **Regional Fire Specialist (Bordelon)**

The Fire Program uses education, outreach, and boundary spanning partnerships to foster the resiliency of communities and landscapes to wildfire at scale. A team of six (wildland) fire specialists helps seek regionally relevant solutions that make sense in the diverse ecological and social contexts of their areas. Focal topics of the Program include science translation and application; supporting planning, implementation, and adaptation of specific landscape scale projects and partnerships; and engaging in, supporting, and learning from fire policy.

### **Seed Certification Aide (Freres)**

The Oregon Seed Certification Service provides a service to the public for maintenance and increase of quality seed and propagating material. The service is provided to ensure varietal purity and seed quality through review and retention of crop production records and a series of field and laboratory evaluations. The Oregon Seed Certification Service certifies approximately 250,000 acres of seed crops annually. This acreage represents 50 different crop species. Twenty-five hundred seed growers, 382 seed warehouses and 237 contractors are involved in the Oregon Seed Certification process.

### **Food Security and Safety Manager (Hibbard-Swanson)**

This position serves on the statewide team of the OSU Extension Family and Community Health Program in the College of Public Health and Human Sciences. Hibbard-Swanson will develop and implement an integrated vision for Extension's community food security programming, which is defined as equitable access to affordable, nutritious and culturally appropriate food. This vision will bring together community food security efforts, food safety and preservation efforts, educational approaches and future programming that meet the needs of Oregonians. This will be achieved through collaboration with OSU colleagues and national, state and local partners.

**Part II: Number of Volunteers/Hours Contributed**

Name of Volunteer Program or Advisory Board	Type of Volunteers (Volunteer, Intern, Board Member, VISTA, etc....)	Number of Volunteers	Number of Hours Served
Master Gardener Program	Volunteers	219	15,600
Family Community Health	Volunteers	76	367
4-H Youth Development	Volunteers and Leaders	325	7931
Agriculture	Volunteers and Interns	22	631
Juntos/Open Campus	Volunteers	75	235
<b>OSU Ext Service, Marion County total number of volunteers and hours</b>		<b>723</b>	<b>24,846</b>

