

# Property ID: 108123

Lot 8, Block 3, Senecal Estates Subdivision II, Woodburn, OR 97071

---

- Tax Lot #: 052W01CC09700
- 3.77 acre vacant wetland – off Senecal Creek Dr.
- Zoned : RS (Residential)
- In Woodburn City Limits
- RMV : \$29,900
- Minimum Starting Bid : \$22,425

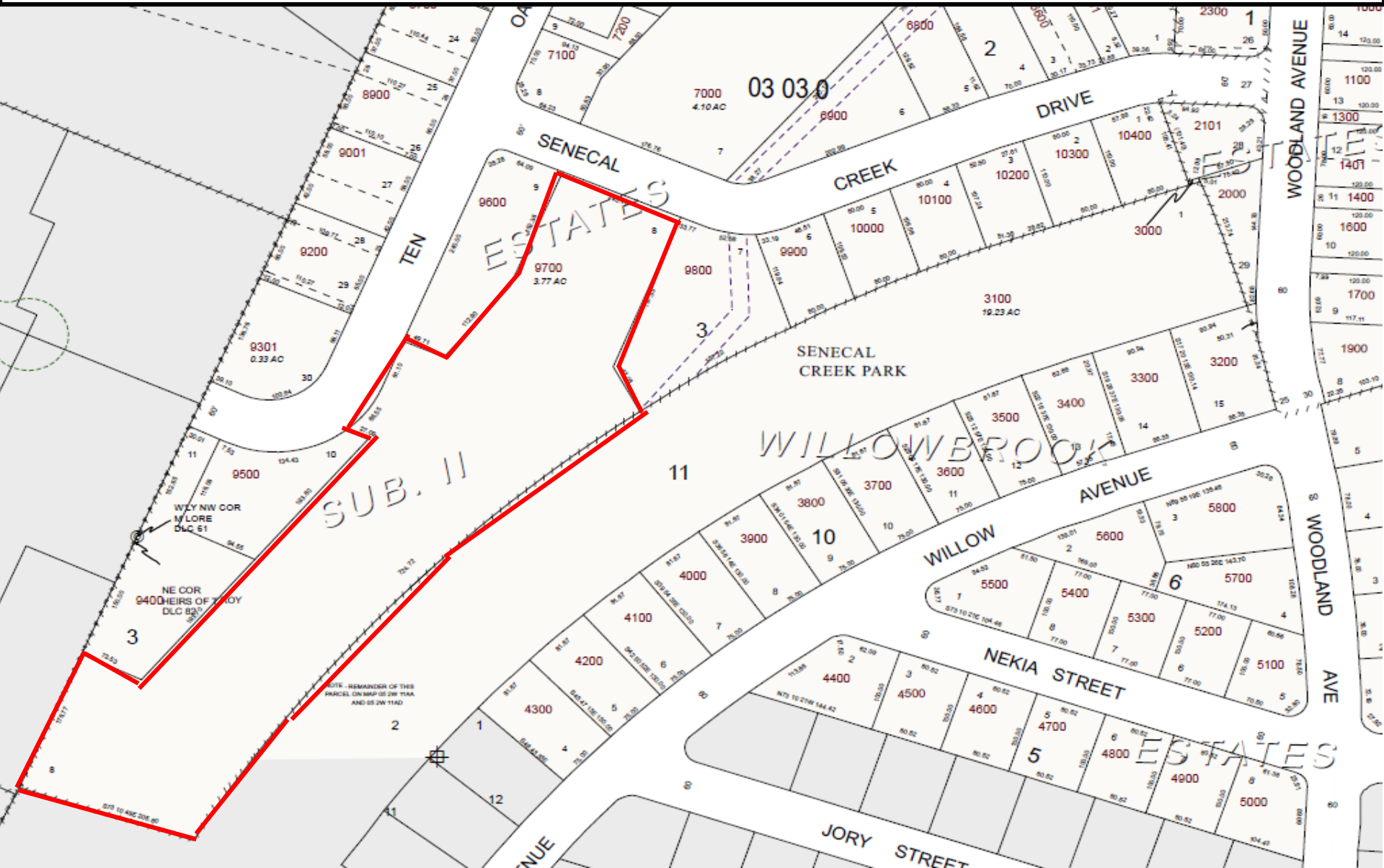
\*Marion County makes no representation about the value, zoning, suitability for any purpose, building feasibility, environmental condition, wetland designation, forest zones, easements, city ordinances and regulations or any other matters. 9.6.2. The county transfers any interest it may hold in these properties by quitclaim deed, not warranty deed.

# Legal Information: R108123

- [Assessor Property Record](#)
- [GIS Map Viewer](#)
- [Google Maps](#)

**Legal Description:** Lot 8, Block 3, Senecal Estates Subdivision II, Marion County, Oregon.

# Assessors Map: R108123



# Arial View: R108089



# Street View: R108089

