

Property ID: R88709

4657 Duchess Ct. NE, Salem, OR 97301

- Tax Lot #: 072W19DD00300
- .138 acre lot
- Zoned : Single Family Residential
- 3 bedroom, 1 bath
- In Salem City Limits
- RMV : \$151,460
- Minimum Starting Bid : \$113,595

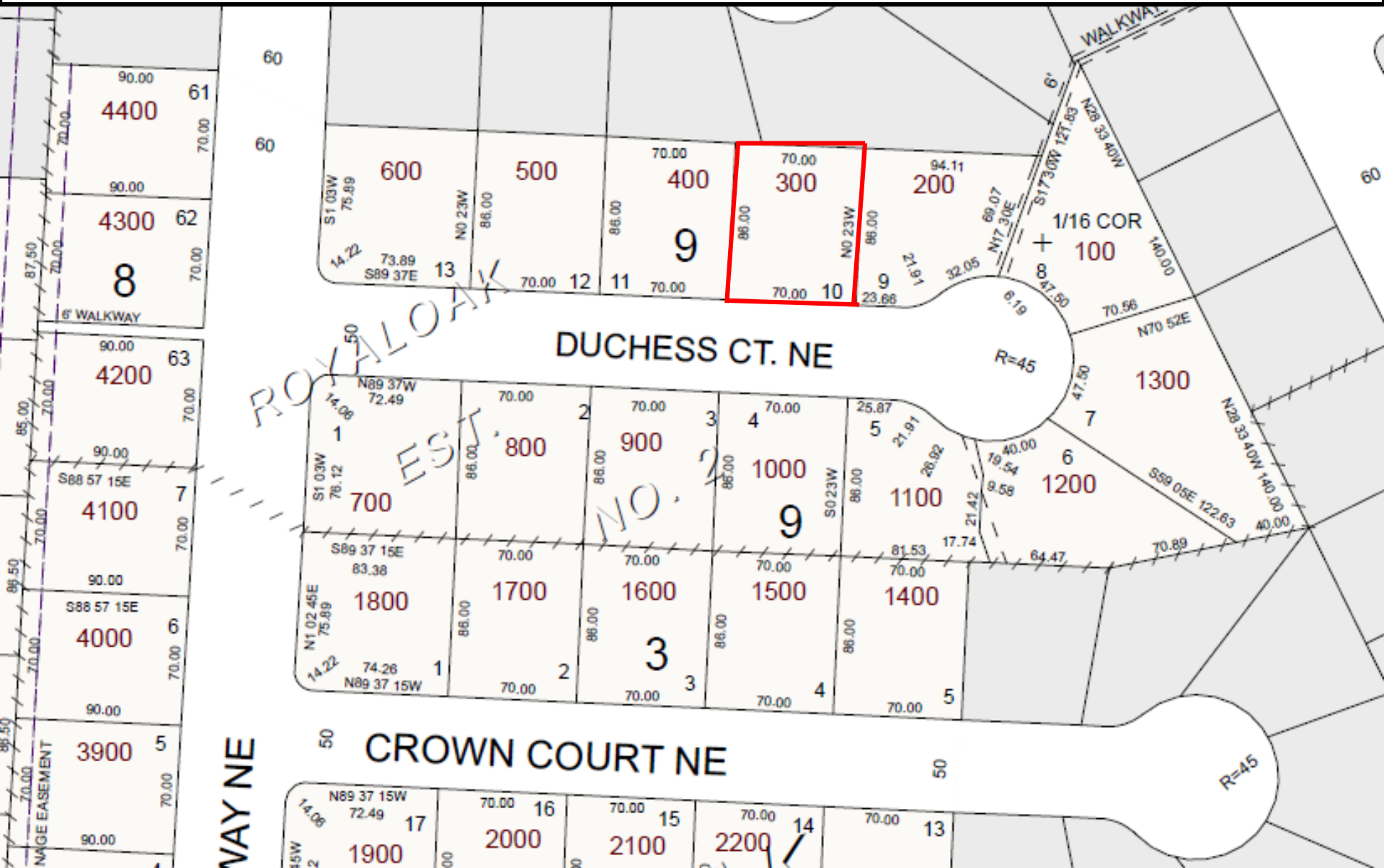
*Marion County makes no representation about the value, zoning, suitability for any purpose, building feasibility, environmental condition, wetland designation, forest zones, easements, city ordinances and regulations or any other matters. 9.6.2. The county transfers any interest it may hold in these properties by quitclaim deed, not warranty deed.

Property Information: R88709

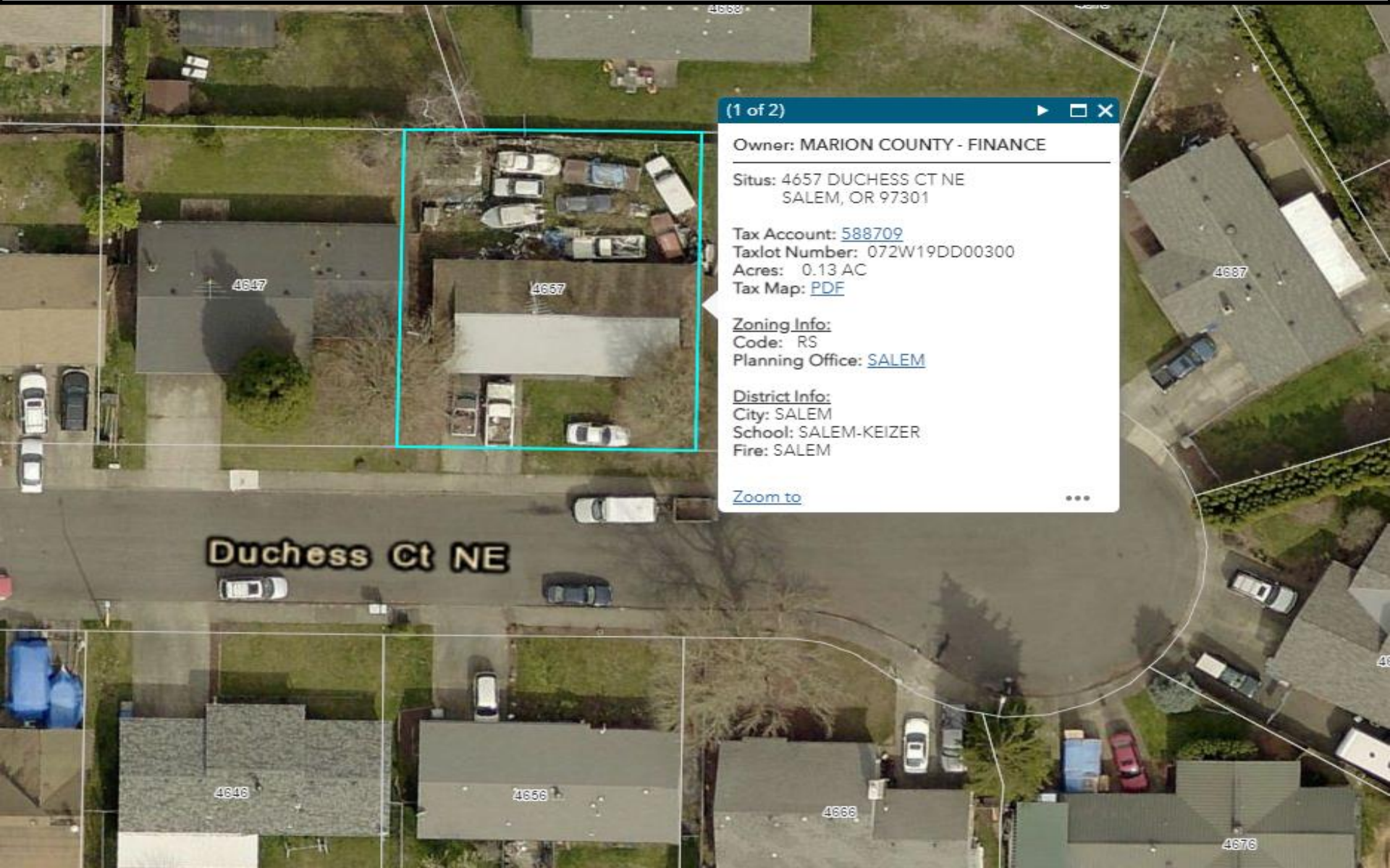
- [Assessor Property Record](#)
- [GIS Map Viewer](#)
- [Google Maps](#)

Legal Description: Lot 10, Block 9, ROYAL OAK ESTATES NO. 2, In The City of Salem, County Of Marion And State of Oregon.

Assessors Map: R88709



Arial View: R88709



(1 of 2) ▶ □ ✕

Owner: MARION COUNTY - FINANCE

Situs: 4657 DUCHESS CT NE
SALEM, OR 97301

Tax Account: [588709](#)
Taxlot Number: 072W19DD00300
Acres: 0.13 AC
Tax Map: [PDF](#)

Zoning Info:
Code: RS
Planning Office: [SALEM](#)

District Info:
City: SALEM
School: SALEM-KEIZER
Fire: SALEM

[Zoom to](#) ...

Street View: R88709



Back Yard View: R88709



Back Yard View: R88709



Kitchen: R88709



Living Room: R88709



Living Room: R88709



Hallway and Bathroom: R88709



Bedrooms 1&2: R88709



Master Bedroom: R88709



Garage: R88709

