

Vaccination Status for Marion County

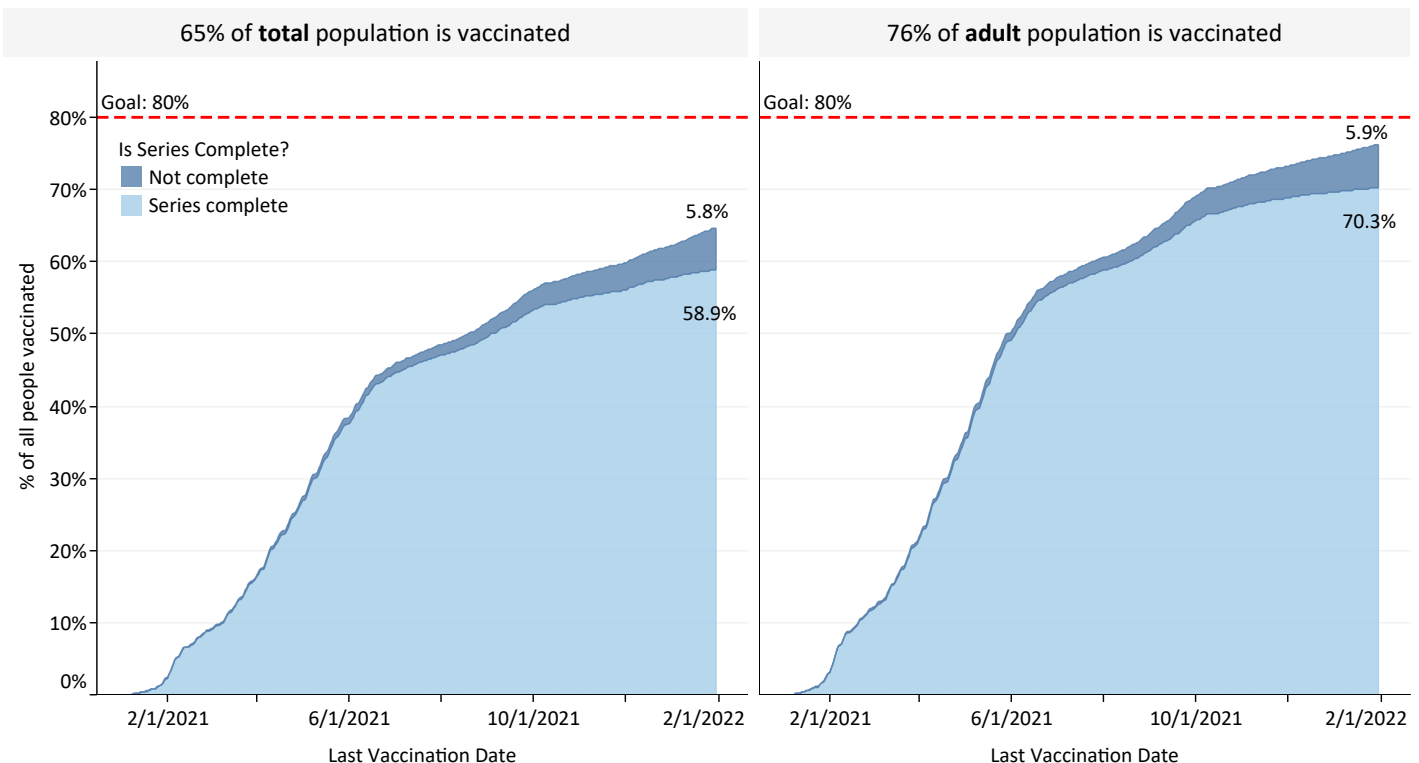
Data from the ALERT IIS as of January 30, 2022

The data in this report comes from the ALERT Immunization Information System (ALERT IIS), which is the immunization registry for the State of Oregon. The data includes *only* those people who are residents of Marion County, and not all vaccinations that take place within the county. Thus, these values will be slightly lower than reports from the state.

The table below shows the number of completed and in-progress vaccinations by month, and the percent coverage in the total population (est. 349,120) and the adult (18 years of age and older) population (est. 263,496). Currently 37.8% of people have received boosters and 139,532 people are up-to-date on their vaccinations (fully vaccinated and boosted if eligible).

Vaccine Administration by Month

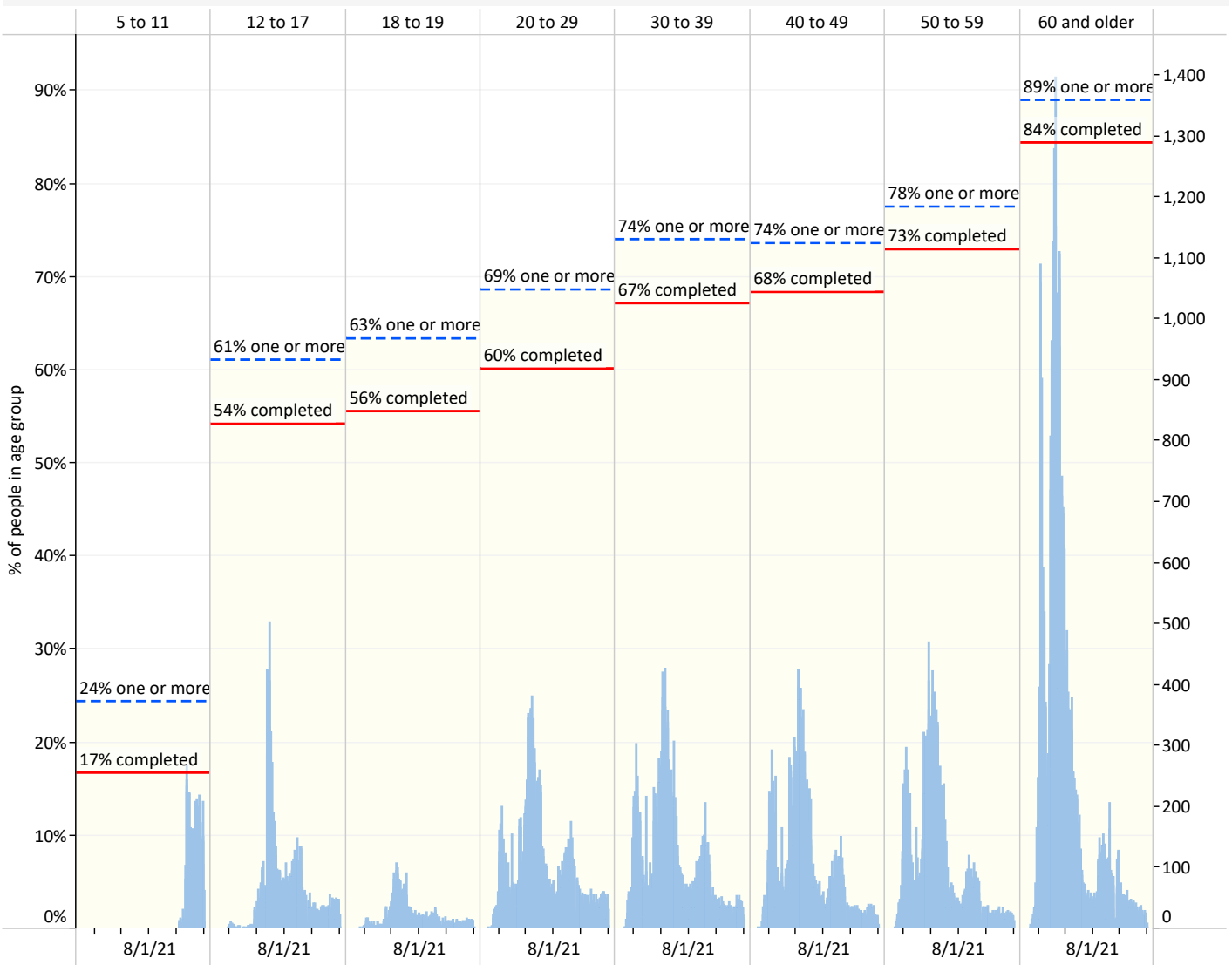
		Series complete	% Series complete	At least one vaccination	% At least one vaccination	Third Doses	% Adults series complete	% Adults at least one vaccination
2020	December	6	0.0%	37	0.0%	0	0.0%	0.0%
2021	January	7,981	2.3%	8,334	2.4%	0	3.0%	3.2%
	February	22,987	6.6%	23,317	6.7%	0	8.7%	8.8%
	March	25,910	7.4%	26,323	7.5%	1	9.8%	10.0%
	April	35,687	10.2%	36,589	10.5%	0	13.4%	13.8%
	May	38,199	10.9%	39,439	11.3%	1	14.0%	14.4%
	June	24,411	7.0%	25,559	7.3%	0	7.1%	7.4%
	July	8,950	2.6%	9,737	2.8%	0	2.7%	2.9%
	August	8,942	2.6%	10,703	3.1%	954	2.7%	3.3%
	September	12,706	3.6%	15,863	4.5%	1,445	4.1%	5.1%
	October	6,175	1.8%	7,456	2.1%	465	2.1%	2.5%
	November	3,732	1.1%	5,378	1.5%	2	1.1%	1.7%
	December	6,192	1.8%	8,728	2.5%	3	0.8%	1.5%
2022	January	3,898	1.1%	8,393	2.4%	7	0.6%	1.5%
Grand Total		205,776	58.9%	225,856	64.7%	2,878	70.3%	76.2%



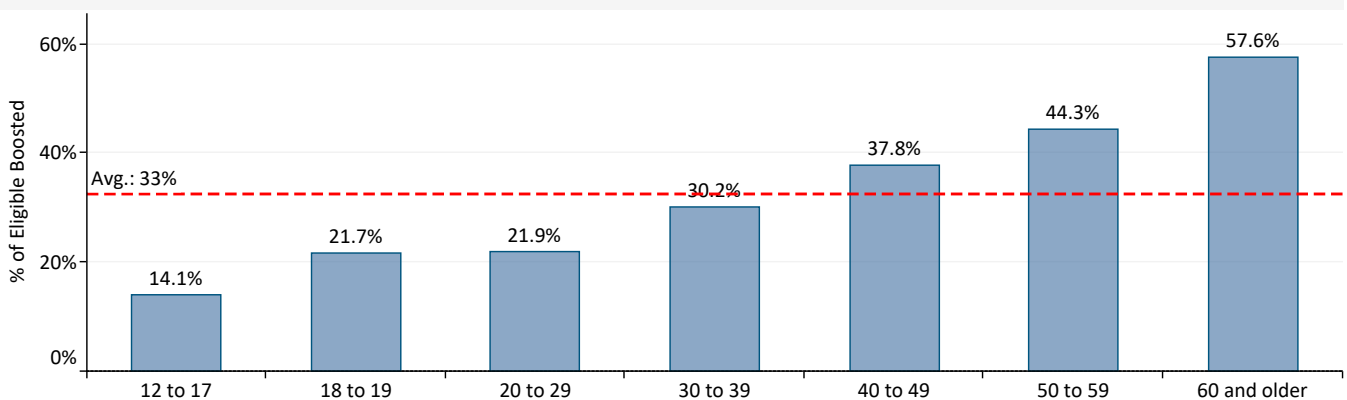
Vaccination Levels by Age, Race, and Zip Code

The charts on this and the following pages show two vaccination metrics: The top chart shows information on the number and percentage of primary vaccines administered. The lower chart shows the cumulative uptake in booster doses for the groups.

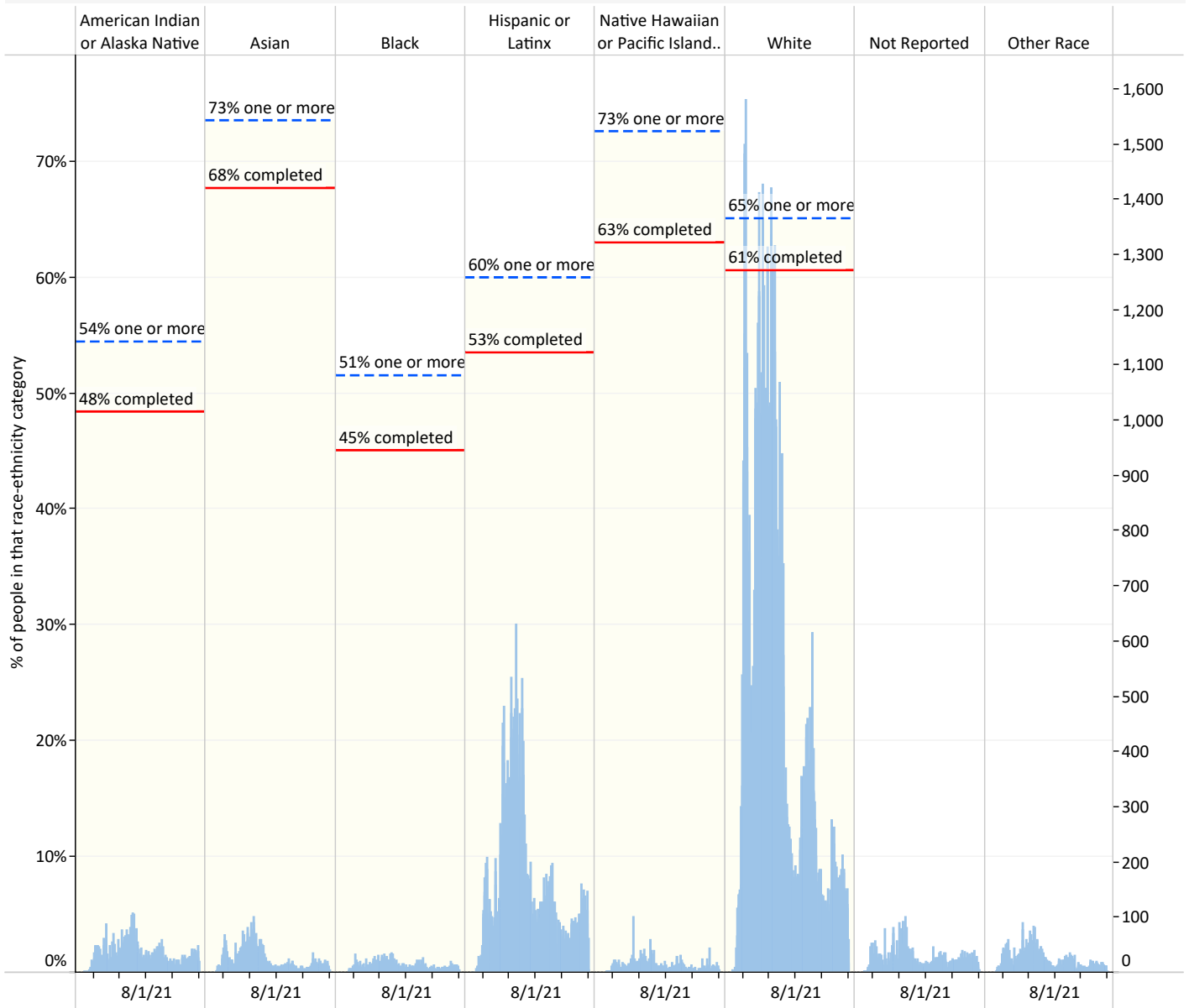
Vaccination Status by Age Group



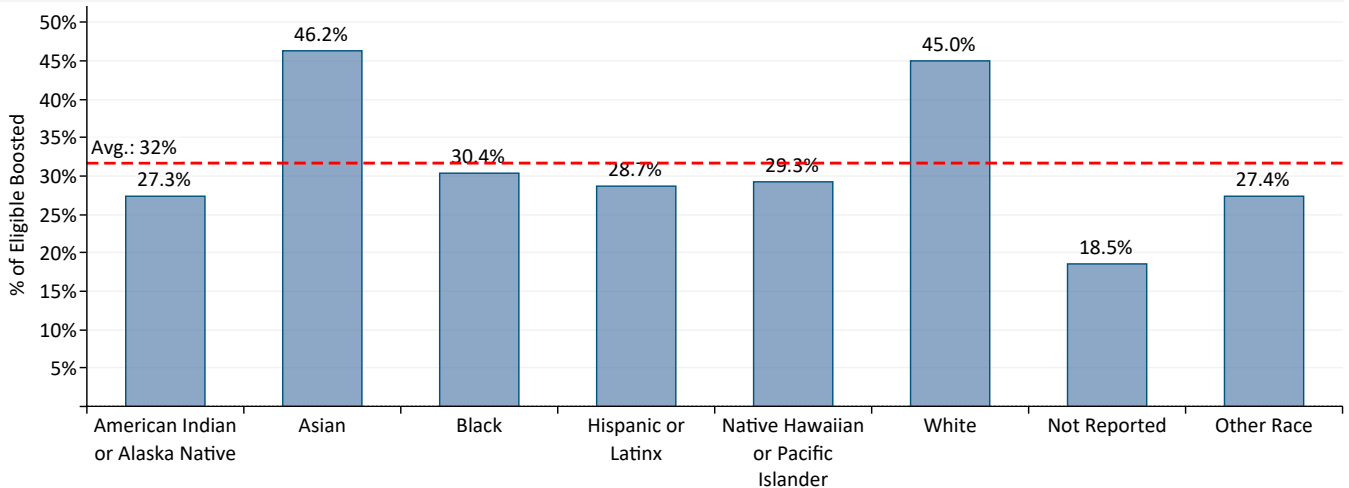
Booster Doses



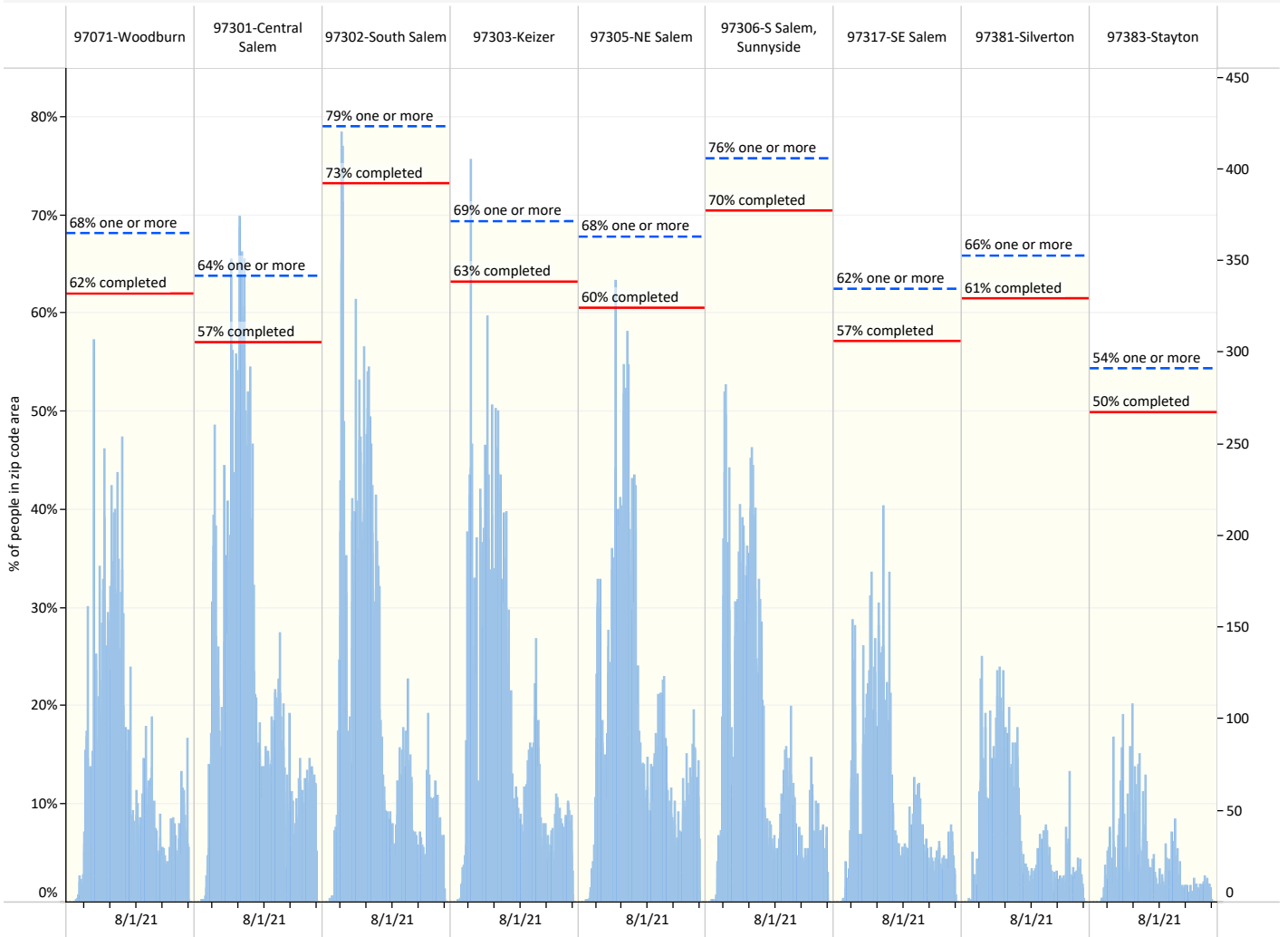
Vaccination Status by Race-Ethnicity Category



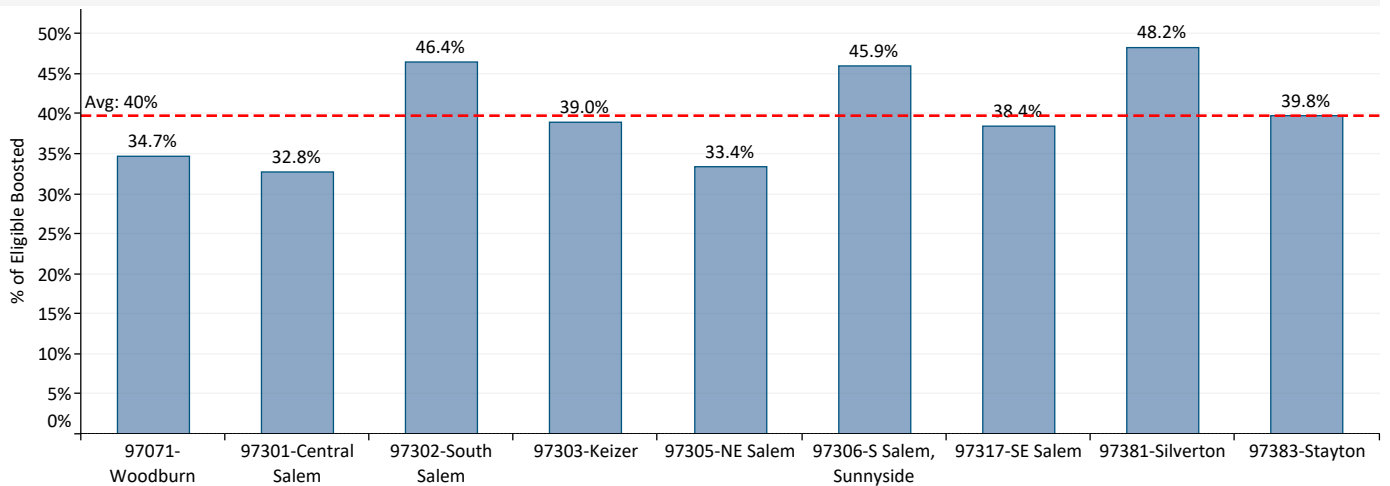
Booster Doses



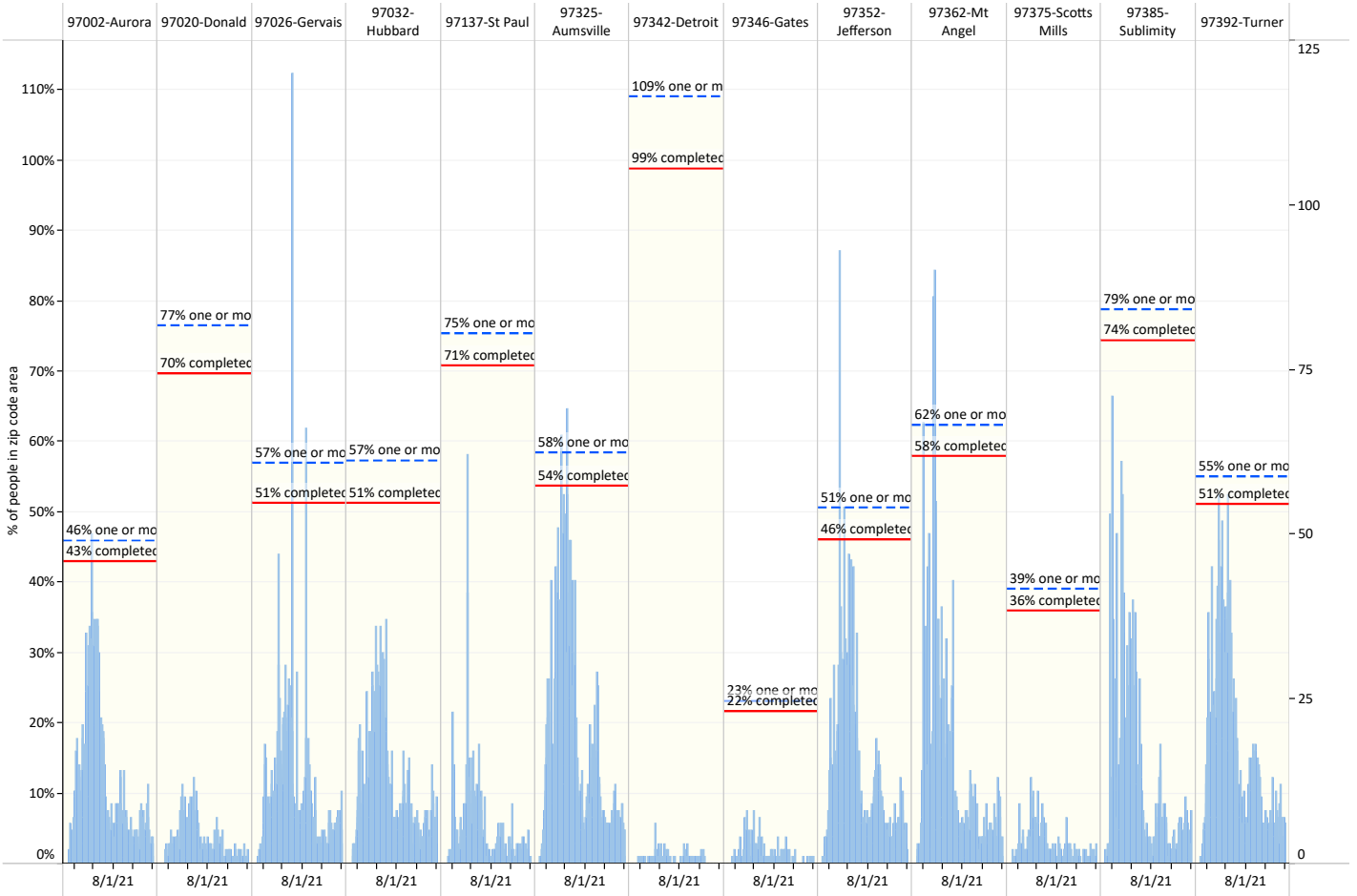
Vaccine Administered by Zip Code (over 10,000 pop.)



Booster Doses



Vaccine Administered by Zip Code (under 10,000 pop.)



Booster Doses

