



Vaccination Status for Marion County

Data from the ALERT IIS as of October 17, 2021

The data in this report comes from the ALERT Immunization Information System (ALERT IIS), which is the immunization registry for the State of Oregon. The data includes *only* those people who are residents of Marion County, and not all vaccinations that take place within the county. Thus, these values will be slightly lower than reports from the state. Only data from the ALERT IIS contains information on the status of an individual (in progress or complete) and their demographic and location information.

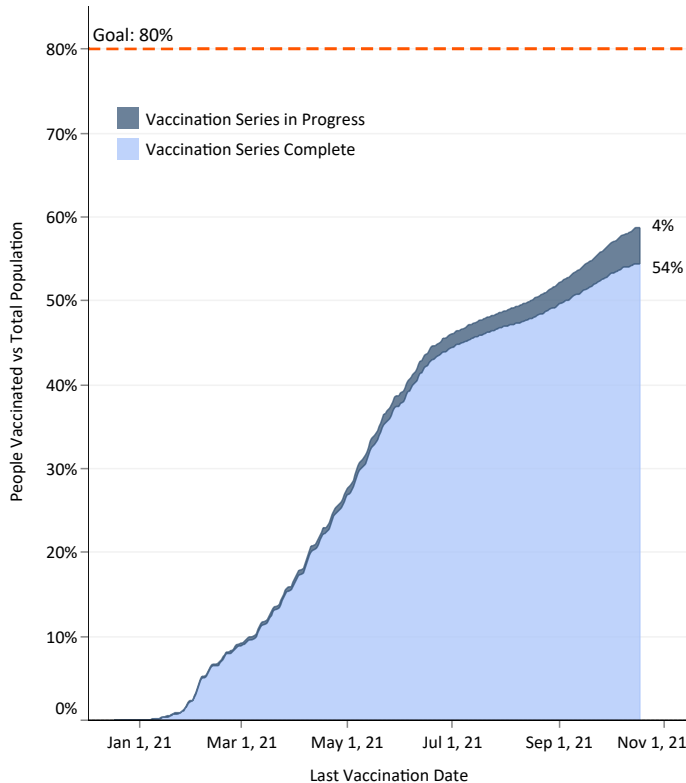
The table below shows the number of completed vaccinations and in-progress vaccinations by month and the percentage coverage in the total population (est. 349,120) and the adult (18 years of age and older) population (est. 263,496).

Vaccine Administration by Month

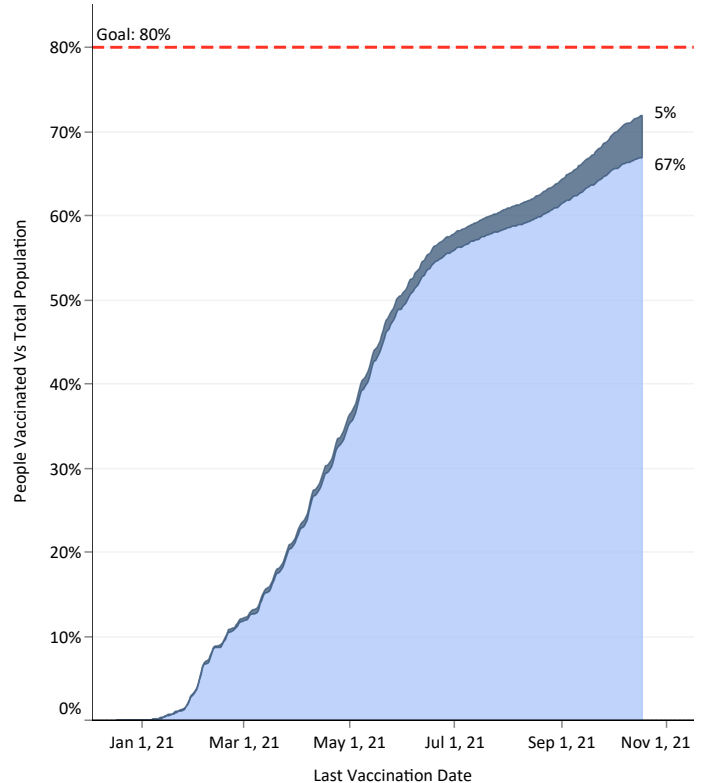
	People Complete	People In-Progress	People vaccinated	% of total population with at least one dose	% of adults with at least one dose	Third doses administered
December	8	35	43	0%	0%	0
January	7,988	466	8,454	2%	3%	0
February	23,033	486	23,519	7%	9%	0
March	25,959	611	26,570	8%	10%	1
April	35,600	1,237	36,837	11%	14%	0
May	38,070	1,535	39,605	11%	14%	1
June	24,326	1,374	25,700	7%	7%	0
July	8,919	908	9,827	3%	3%	0
August	8,917	2,019	10,936	3%	3%	955
September	12,666	3,877	16,543	5%	5%	1,445
October	4,610	2,323	6,933	2%	2%	129
Grand Total	190,096	14,871	204,967	59%	72%	2,531

Cumulative Vaccine Administration

Percent of total population

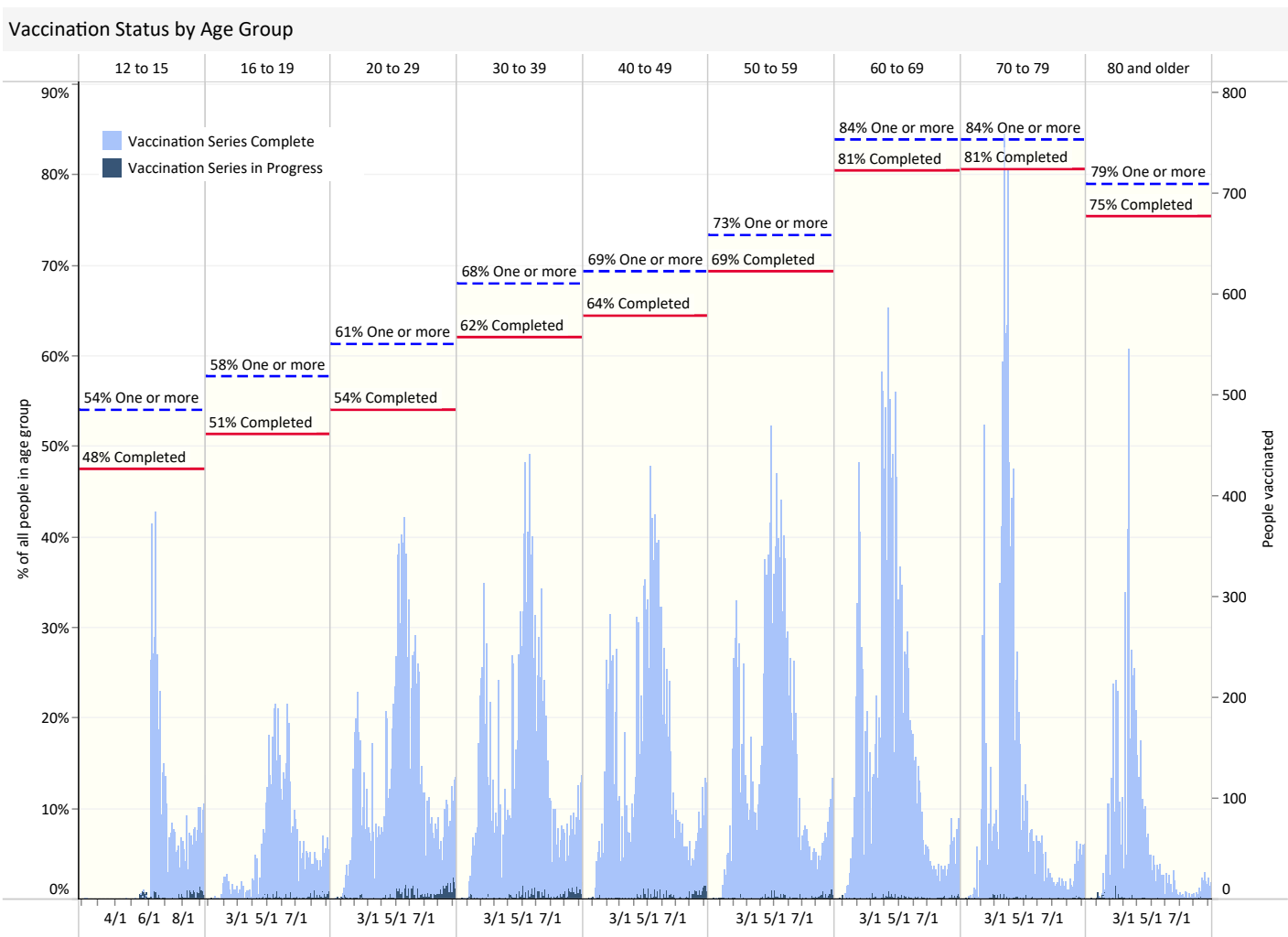
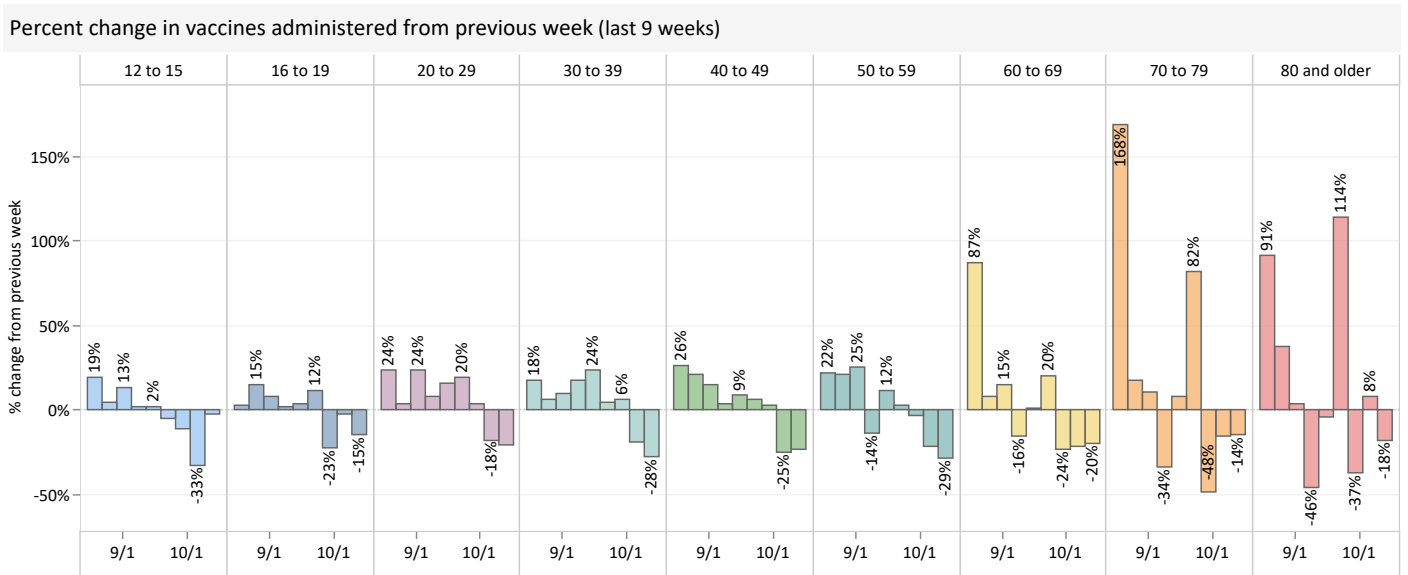


Percent of adult population



Vaccination Levels by Age Group

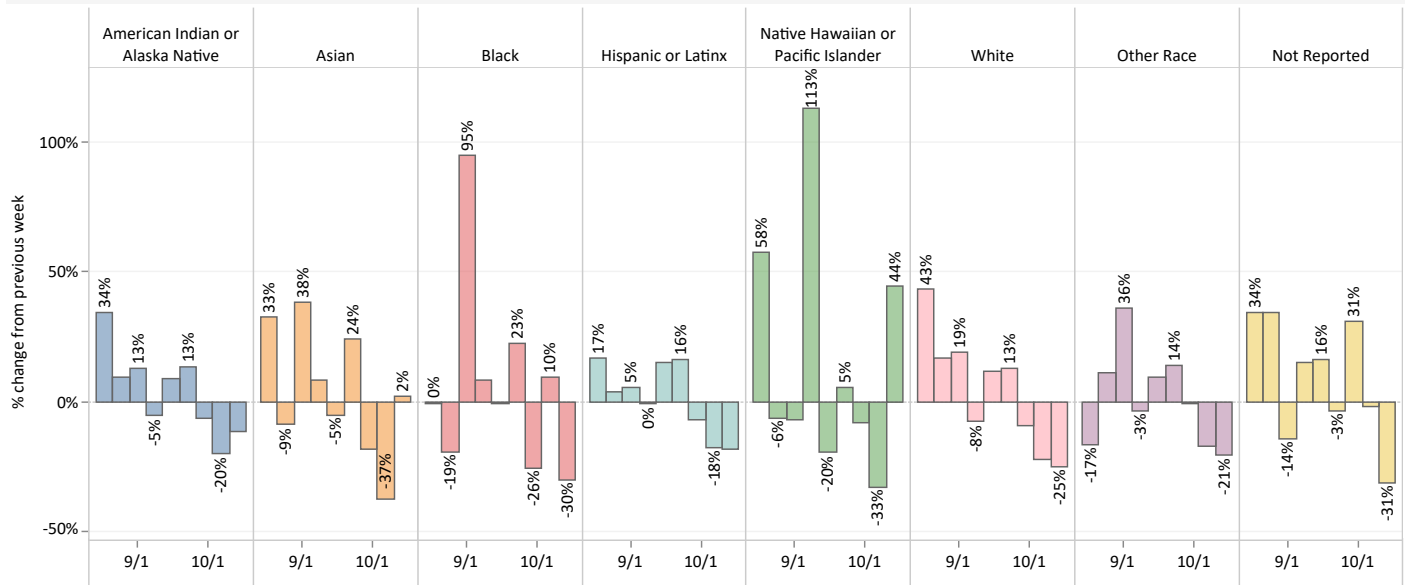
The first chart shows the weekly percent change vaccine uptake by age group, while the second chart displays the daily vaccination counts divided into complete and incomplete vaccinations and the cumulative percentage of the vaccination status for each age group. For all charts, the date is the date of the most recent vaccination.



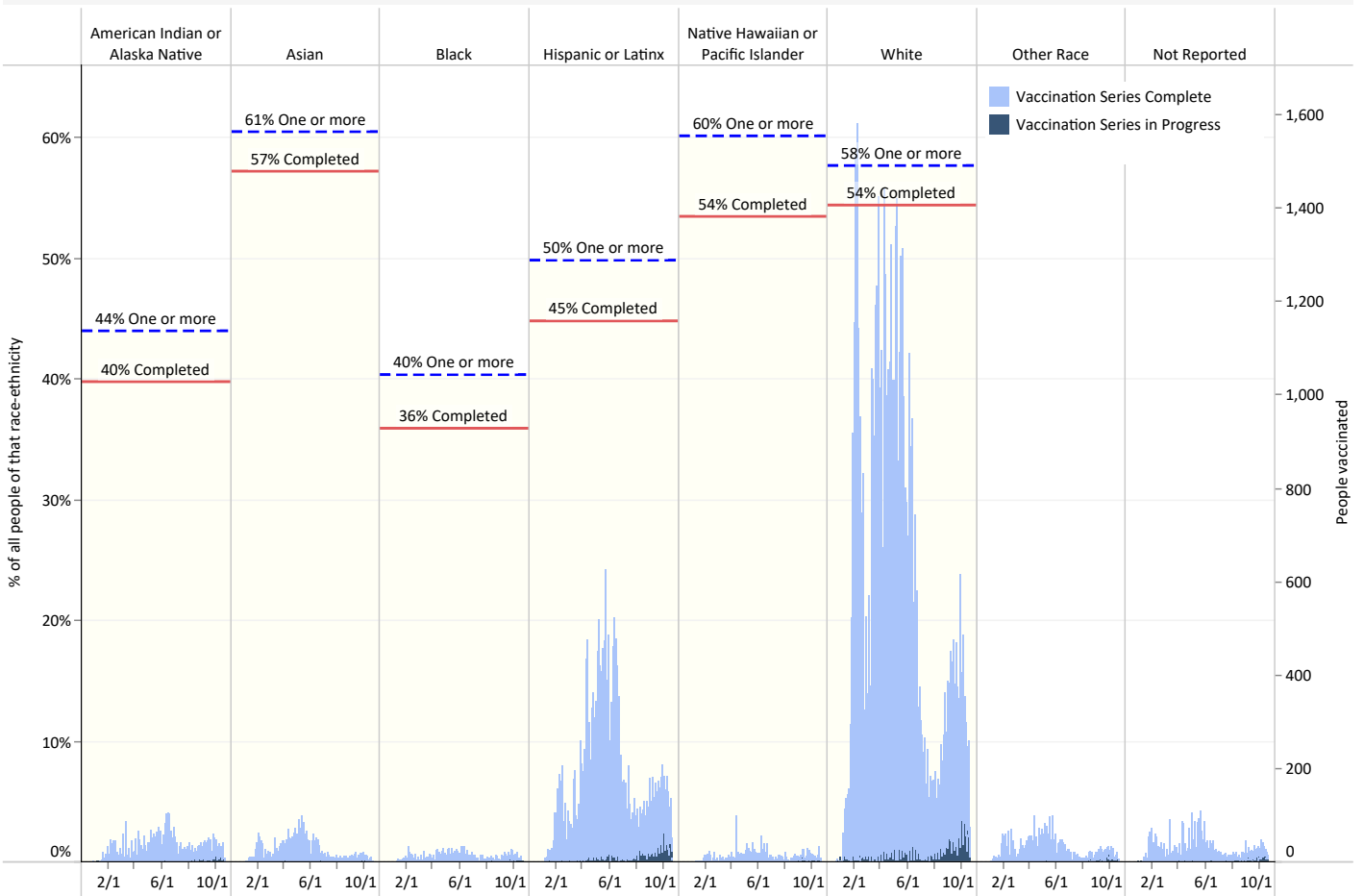
Vaccination Levels by Race-Ethnicity

The first chart shows the weekly percent change vaccine uptake by race-ethnicity category, while the second chart displays the daily vaccination counts divided into complete and incomplete vaccinations and the cumulative percentage of the vaccination status for each category. For all charts, the date is the date of the most recent vaccination.

Percent change in vaccines administered from previous week (last 9 weeks)



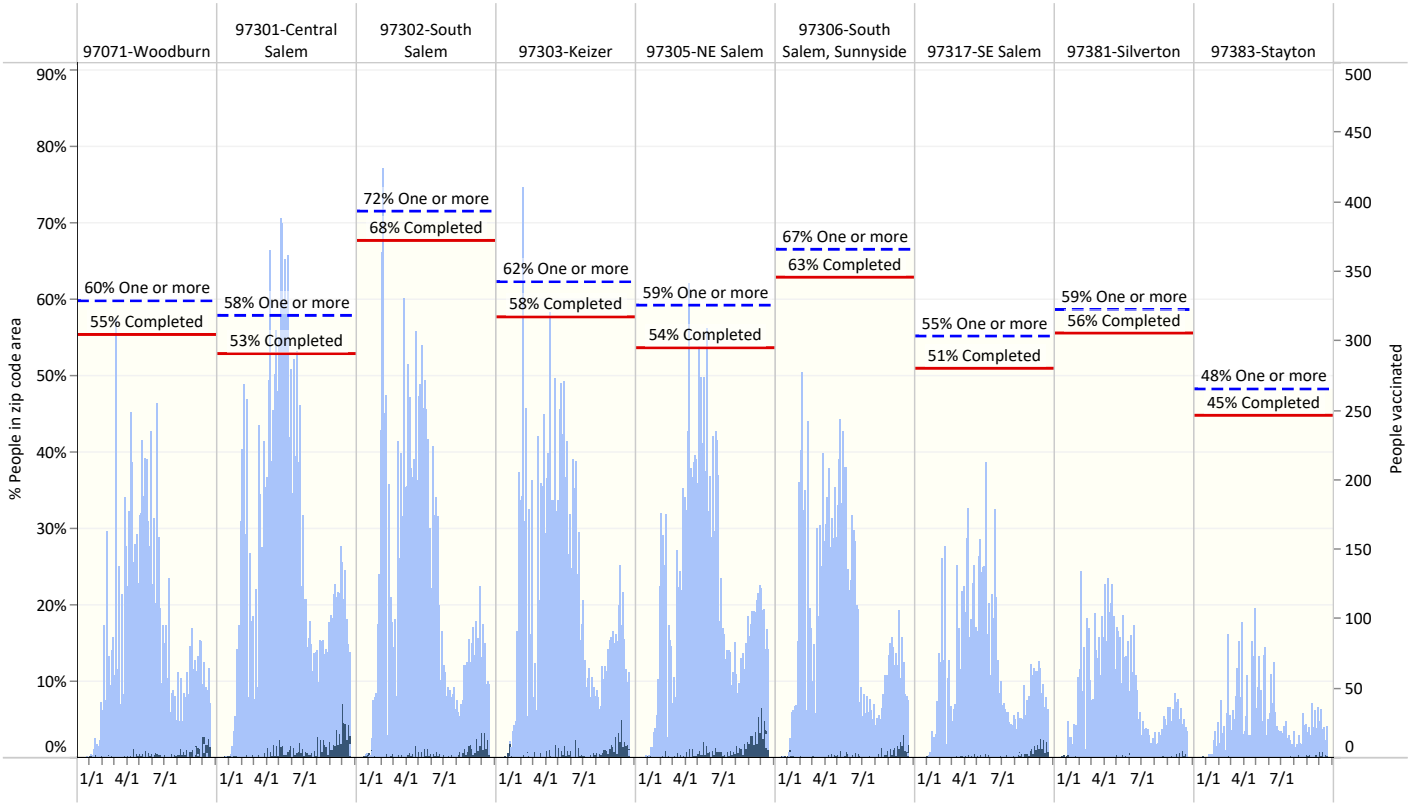
Vaccination Status by Race-Ethnicity Category



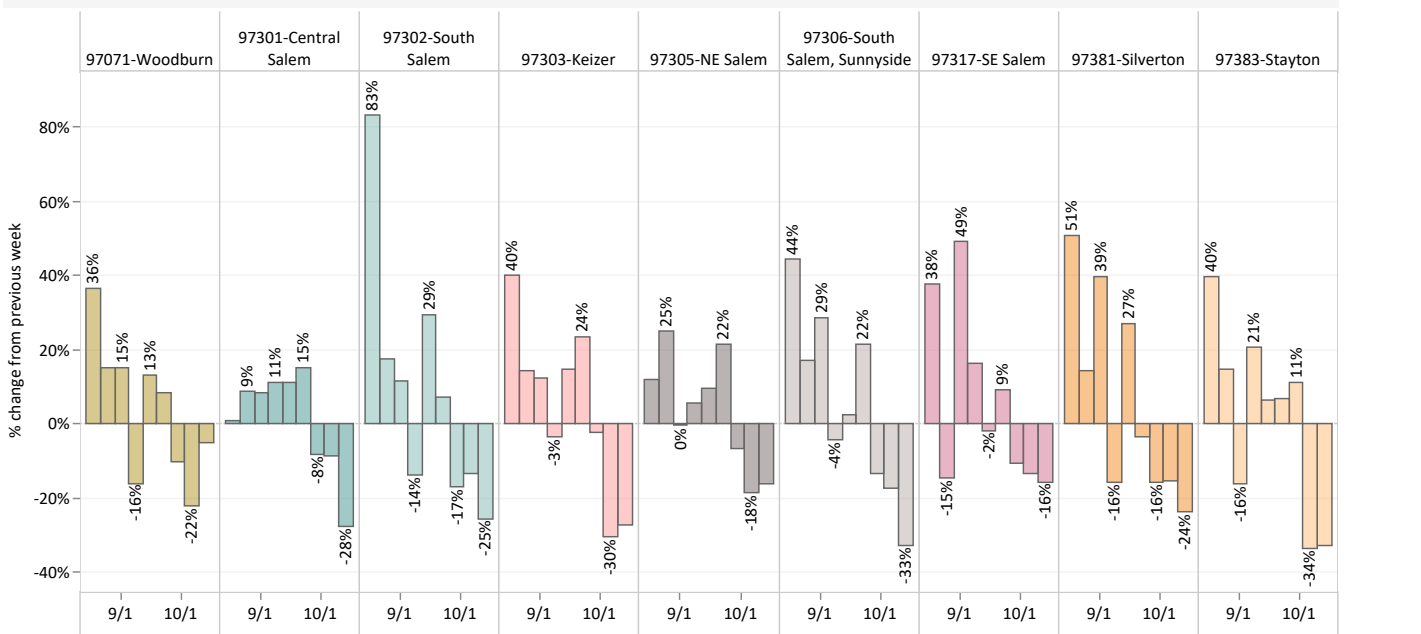
Zip Code Area

The charts on this and the next page present the vaccination status for zip code tabulation areas. The charts below represent those zip code areas with a population greater than 10,000 people. The upper chart shows the percentage of people with at least one dose and those that have completed their vaccination series. The light blue bars are the daily number of people vaccinated; the darker bars are those in-process. It is likely that many of those obtained recently will go on to complete their vaccination series. The second chart shows the weekly percent change in vaccination uptake by zip code. In all cases, the date is the date of the latest vaccination. On the next page is a map showing the percent of the population that has at least on dose of vaccine, and data on the numbers of completed and in-progress vaccinations.

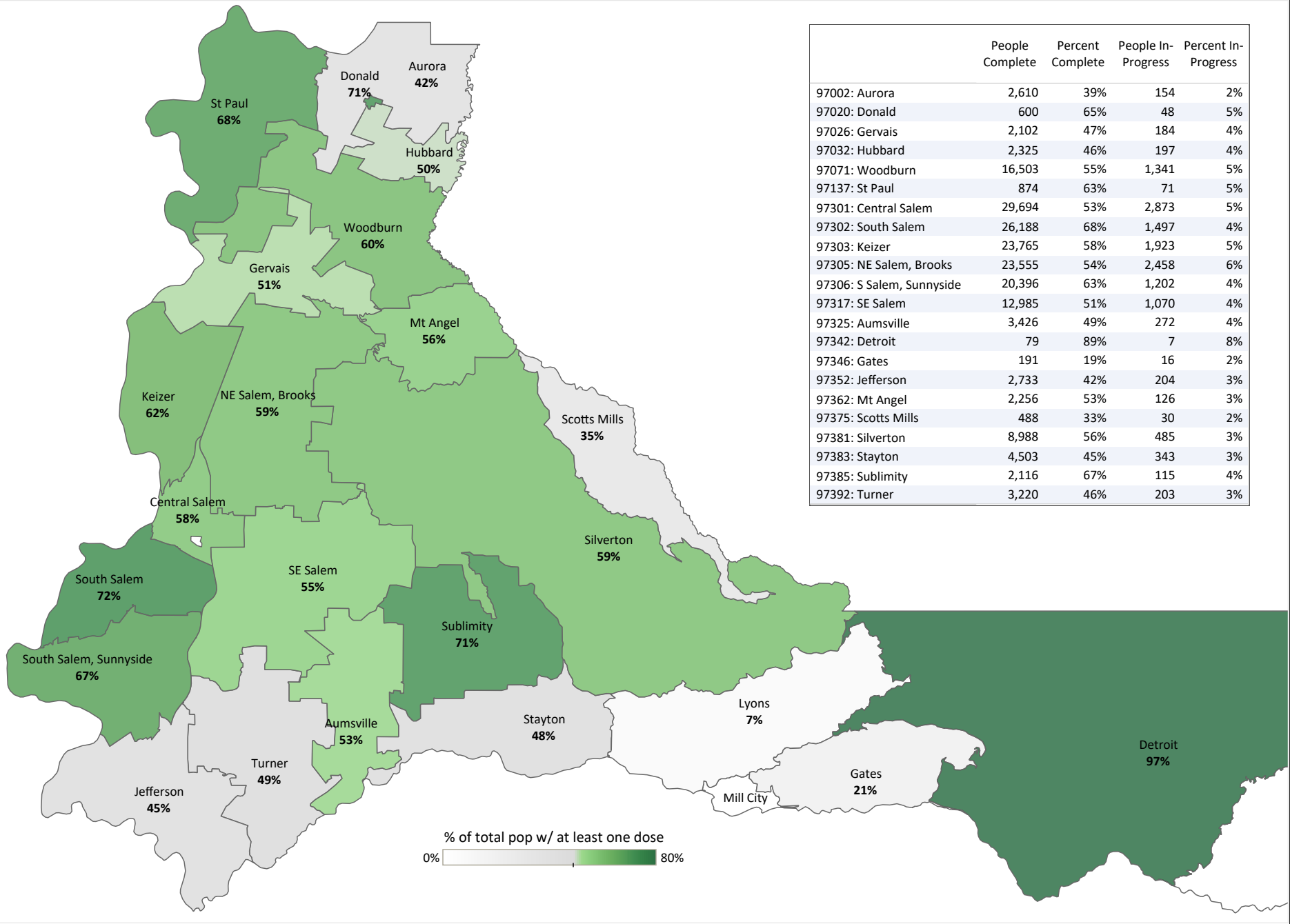
Vaccine Administered by Zip Code (over 10,000 pop.)



Percent change in vaccines administered from previous week (last 9 weeks)



Vaccination Status by Zip Code Area (from ALERT as of 10/17)



% of total pop w/ at least one dose
 0% 80%