



What's inside

EarthWISE feature	1 - 2
Recent Recerts	3 - 4
Deciphering green power options	5
Ask Mr. Sustainability	6
Factoids	6
EW directory	7 - 8
Green Awards and Master Recycler info	8

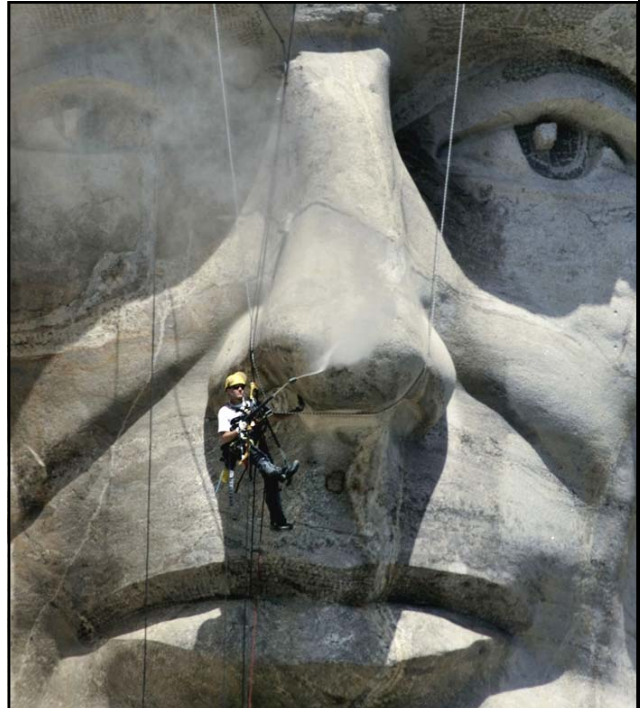
Important dates:

- Dec. 21 Winter Solstice
- Dec. 25 Christmas
- Jan. 1 New Year's Day
- Jan. 3 Application deadline for MR class
- Jan. 30 Master Recycler classes begin
- Jan. 21 Martin Luther King Jr. Day
- Jan. 22 Green Awards Nominations due
- Feb. 18 Presidents' Day
- Mar. 1 Fourth Annual Mid-Valley Green Awards
- Mar. 24-28 Spring Break

Mean, green and clean

Choosing the right cleaner is more important than you might think

Cleaning products are necessary for maintaining attractive and healthful conditions in the home and workplace. In addition to the aesthetic benefits of cleaning, the removal of dust, allergens, and infectious agents is crucial to maintaining a healthful indoor environment. But cleaning products can present several health and environmental concerns. They may contain chemicals associated with eye, skin and respiratory irritation, or other human health issues. Additionally, concentrated forms of some commercial cleaning products are classified as hazardous, creating potential handling, storage, and disposal issues.



In 1927, Gutzon Borglum and 400 workers began sculpting the 60-foot carvings of Presidents Washington, Jefferson, Roosevelt, and Lincoln into Mount Rushmore in South Dakota. In July 2005, Jens Kranhold (pictured above), along with a crew from Germany and the National Park Service, gave Abe his first facial since the monument was completed in 1941. Photo: AP/Charlie Riedel

The dirty details - environmental and health concerns

The actual risks from cleaning chemicals at typical exposure levels are often uncertain, and in many cases are probably low. Regardless, reducing exposure hazards should always be considered when you are choosing which product to use.

- *Cleaning products are released to the environment during normal use through evaporation of volatile components. Janitorial staff and others who perform cleaning can be exposed to concentrated cleaning products.*
- *Certain ingredients in cleaning products can present hazard concerns to exposed populations (e.g., skin and eye irritation in workers) or toxicity to aquatic*

species in waters receiving inadequately treated wastes. For example, alkylphenol ethoxylate, a common surfactant in cleaners, has been shown in laboratory studies to function as an endocrine disrupter that adversely affects reproductive hormones in wildlife exposed to polluted waters.

- *Ingredients containing phosphorus or nitrogen can contribute to nutrient-loading in water bodies, effecting water quality.*
- *Volatile organic compounds (VOC's) in cleaning products can affect indoor air quality and also contribute to indoor smog formation.*

Green cleaning can be defined as "effective cleaning that protects health without harming the environment."



George Washington got his first "facial" in 2005.

Benefits of buying green cleaners

Choosing less hazardous products with positive environmental attributes (e.g., biodegradability, low toxicity, low volatile organic compound (VOC) content, reduced packaging, low life cycle energy use) and taking steps to reduce exposure can minimize harmful impacts to custodial workers and building occupants. They'll also improve indoor air quality and reduce water and ambient air pollution.

Another advantage to buying less hazardous cleaners is that it may reduce costs when it comes time to dispose leftover cleaner product. When you buy cleaners in concentrates, there is also a reduction in packaging waste and transportation energy.

So what are green cleaners and how will I know them?

From what was written above, we can assume that green cleaning may be defined as "effective cleaning that protects health without harming the environment." The challenge then becomes to find which cleaner does just that—protects humans and environment. However, the overwhelming number of products and their competing claims makes it almost impossible to know what to buy and who to believe.

Fortunately, third party non-profit and government organizations have created environmental standards by which a product may be judged. Standards that they have developed for product safety, toxicity, characteristics, and performance ensure that consumers are using a product that is less harmful to human health and the environment. EarthWISE businesses, in fact, are encouraged to purchase as many of their cleaning products that have a 3rd party certification as they can.

So which 3rd party cleaners are EarthWISE recognized? The logos to look for are listed below:



www.greenseal.org



www.epa.gov/dfe



www.scscertified.com



www.ecologo.org



www.ul.com

Time to recertify already?
These EarthWISE businesses just did



Bentley's Grill



D & O Garbage



Salem Convention Center



LifeSource Natural Foods



Lancaster Mall

More recertifications



Assistance League - Daue House



Studio 3 Architecture, Inc.



Assistance League - Encore Furniture



Look what's heading to Oregon

Organic Transit, a start-up out of Durham, NC, is looking to set up a manufacturing site in Portland. Their signature product, the ELF, is a hybrid electric bicycle that can run on pedal power or by a small 750 watt battery-powered motor which can hit speeds of up to 20

mph. The battery can be re-charged via a solar panel that is embedded into the rooftop, or by plugging it into a wall charger. You can get an estimated 14 miles of power between charges. Base price? \$4,995.

www.organictransit.com

Deciphering Renewable Power Options at Your Utility

By Rebecca O'Neil, Oregon Department of Energy

Why does Portland General Electric (PGE), Pacific Power, Consumers Power, or any other utility in Oregon offer you a “green rate” or renewable power option on your electricity bill?

Privately-owned utilities PGE and Pacific Power were required to offer a renewable energy rate thanks to a 1999 law. In 2007, the State of Oregon passed the Renewable Portfolio Standard (SB 838, ORS 469A) which requires big utilities—EWEB, Pacific Power, and PGE—to have at least 25% of their energy come from renewable sources by 2025, while smaller utilities have lower requirements. In addition to improving their standard power mix, the law specifies that all Oregon utilities are required to offer a voluntary “green rate” to their customers.

As a result of these requirements for renewable power options and Oregonians’ demand for cleaner power, Oregon’s optional renewable power programs have grown into the top-performing programs in the country in enrollment and customer penetration levels. Pacific Power offers Blue Sky (<http://www.pacificpower.net/env/bsre.html>) and Portland General Electric offers Green Source (www.greenpoweroregon.com).

Does this mean that renewable power is delivered directly to your outlet, once you sign up? No. Most electricity is acquired by contracts on a regional basis; even though the green energy exists, there is no guarantee about exactly what energy you physically receive.

Did you know? Choosing to purchase green power is one of the many options for achieving EarthWISE certification.

Instead, the utilities purchase *renewable energy certificates* (RECs) to match customer demand. RECs are environmental commodities. One REC equals all attributes of a megawatt-hour of electricity from a specific renewable energy project, time stamped by a month and year (for example, September 2012). In addition, Northwest Natural offers to purchase carbon offsets for its natural gas customers, called the Smart Energy program (www.nwnatural.com/smartenergy). By paying for these commodities, utilities are supporting renewable energy projects and helping create a strong marketplace for new renewable energy projects to thrive.

Ask your utility what renewable energy or clean air projects you support with your enrollment. Or look up your utility’s program online: http://apps3.eere.energy.gov/greenpower/buying/buying_power.shtml?state=OR.

Questions? Contact the author at rebecca.oneil@odoe.state.or.us. Rebecca currently serves as the chair of a Public Utilities Commission citizen advisory committee, the Portfolio Options Committee, which helps ensure that the private utilities’ renewable power options deliver value to Oregonians.



Klondike wind turbines can generate 400 megawatts of electricity

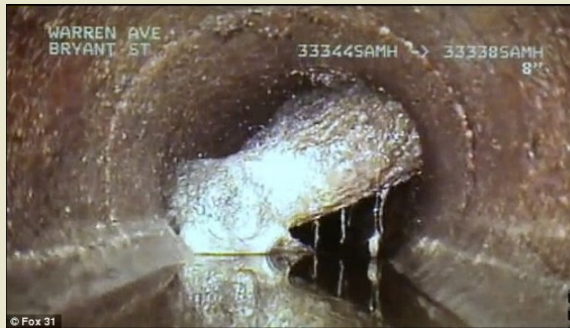


Ask Mister Sustainability

Question: One of the EarthWISE suggestions I've come across mentions labeling our sinks at work with a "dump no grease down drain" sign. I work in an office. How would grease get down our drain?

While your grease "footprint" is much smaller than a restaurant's, FOG's (fats, oils, and grease) have a way of entering your pipes whenever food stuffs or other organics get washed down the drain. Add in a pinch of cleaning products and flushed away wet-wipes and you soon have a recipe for your very own homegrown fatberg disaster.

What's a fatberg? A fatberg is a solid FOG plug that grows inside of sanitary sewer pipes. The term was coined this past summer by Thames Water (London, England) when they unclogged a 33,000 pound monster that was growing in a stretch of the London sewer system. Officials reported that if they hadn't discovered it in time, raw sewage could have started spurting out of manholes across broad areas of Kingston (a borough of London); it took six weeks to repair the damage.



The original "fatberg" identified in London, England.

A fatberg is not unlike a human artery that gets clogged from eating too many fries and Double Down sandwiches, especially in the presence of non-degradable wet-wipes. Simon Evans, a Thames Water media relations manager said in *Atlantic Citys* "Fat clings to wipes, wipes cling to the fat."



An example of a cascading fatberg.

What's a business to do? A good place to start is to remind employees that, no matter what it says on the container, flushable wet-wipes are bad news. Just because something is flushable does not mean that it's wise to do so. I personally know of several cases of cell phones that met ignoble ends in well-tuned toilets. Flushable? They were.

Another important business practice is to schedule regular maintenance of grease traps if you have them. Because nothing says "bad business" like a sewer backup.

Factoid Department

They didn't win the league title, but the Portland Timbers are still champs. Besides playing in a LEED-Silver stadium, they've also set a goal to increase their waste diversion to 90%, primarily by composting more food waste.

There should be a trophy for that.

Speaking of waste reduction, the Oregon paint stewardship program (PaintCare) announced that it diverted just over 580,000 gallons of paint last fiscal year. That's a bit more than enough to cover the City of Keizer, should one be so inclined.

Has reuse always been so important? At a recent "Origins of Recycling" conference at Tel Aviv University, scholars say various sites lead to mounting evidence that humans made bone tools, abandoned them, then later reshaped them again at various times between 420,000 to 200,000 years ago.

Nothing speaks of permanence like metals; they can be used repeatedly forever, unless we send them hurtling into space. Of the 92 billion aluminum cans sold in the US last year, 62 billion were recycled into something new.

The other 30 billion? Temporarily lost in landfills, sunk in aquatic depths, or adorning frat house walls.

EarthWISE Member Directory

* Denotes new EarthWISE business

Automotive

AJ's Auto Repair, Inc.
Brooks Automotive
Hillyer's Mid-City Ford
Sanford Automotive

Construction

Advantage Precast, Inc.
Arbuckle Costic Architects, Inc.
Barnwood Naturals, LLC
Carlson Veit Architects, P.C.
CB | Two Architects
Cherry City Heating
Cherry City Remodeling
dalke Construction
Day Heating & Cooling
Fluent Engineering, Inc.
Jet Industries
LCG Pence Construction, LLC
Modern Building Systems, Inc.
Pence Northwest Construction, LLC
Studio 3 Architecture, Inc.

Education

Chemeketa Community College
Chemeketa Center for Business & Industry
Straub Environmental Center*

Financial

FPS, Inc.
SELCO Community Credit Union

Food

Bentley's Grill
BrucePac - Silverton & Woodburn Plants
Cascade Baking
Jonathan's
Kerr Concentrates, Inc.
LifeSource Natural Foods
NORPAC Foods - Stayton, Brooks, & Salem Plants
Spring Valley Dairy
Truitt Brothers, Inc.
Willamette Valley Fruit Company

Government

Champoeg State Heritage Area
Marion County Dog Shelter
Marion County Public Works—Silverton Road Campus
OR Department of Administrative Services- 20 Buildings
OR Dept. of Corrections (DOC) /Gath Road Range
OR DOC Mill Creek Correctional Facility
OR DOC CDC/Warehouse
OR Department of Energy
OR Exposition Center
OR Dept. of Public Safety Standards & Training
OR Lottery
OR DAS - Salem Motor Pool
OR State Capitol
OR State Corrections Institution
OR State Penitentiary
Salem Civic Center
Salem Fire Department
Salem Housing Authority
Salem - Information Technology
Salem Keizer Transit
Salem - Public Works Willow Lake WPCF
Salem Shops
Salem - Urban Development's Airport Division
Salem - Urban Development's Director's Office
Salem Public Library

Landscaping

DeSantis Landscapes, Inc.
The Garden Angels
Green Acres Landscape, Inc.

Medical

Holly Chamberlain D.D.S., L.L.C.
Chiropractic Physicians, P.C.
Miller Orthodontics
Rural Metro Ambulance
Willamette E.N.T. & Facial Plastic Surgery, LLP

Not For Profit

Assistance League of Salem - Daue House
Assistance League of Salem - Encore Furniture
Family Building Blocks
Garten Services, Inc.
Habitat for Humanity of the Mid-Willamette Valley
Marion-Polk Food Share

Not For Profit (Continued)

SAIF Corporation
Temple Beth Shalom
United Way of the Mid-Willamette Valley
Willamette Lutheran Retirement Home

Personal Services

Designer Cut
Phiz Spa

Professional/Services

AAA Cleaning Service - Metro, Inc.
ABC Window Cleaners & Building Maintenance
Allied Video Productions
Cascade Employer's Association
Collier Law
Compex Two Computers
Lancaster Mall Operations
Law Office of Eden Rose Brown
VanNatta Public Relations/Spire Management

Real Estate & Commercial Properties

The Epping Group/Creekside Corporate Center
First American Title Insurance Company
Pringle Creek Community
Sperry Van Ness Commercial Advisors
Wildwood | Mahonia

Recycling/Solid Waste

Agri-Plas, Inc.
Covanta Energy, Marion Facility
D & O Garbage Service Inc.
Loren's Sanitation & Recycling Services
Marion Recycling Center
North Marion Recycling & Disposal
Pacific Sanitation

Retail/Wholesale

Cook Stationery Co.
Habitat for Humanity ReStore
One Fair World

Tourism

Grand Hotel in Salem
Salem Convention Center
Travel Salem

Green Awards - Nominations 2014 MID-VALLEY GREEN AWARDS



Nominations Sought

Do you know a person, business, or organization that acts, thinks and does green? Then you need to nominate them today!

Green Award categories include:

- Recycler of the Year
- Sustainable Business of the Year
- EarthWISE Certified Business of the Year
- Green Apple Education Award
- Green Product/Service of the Year

Nomination forms and category descriptions are available at www.midvalleygreenawards.org or call Straub Environmental Center at (503) 391-4145 to request a mailed copy.

NOTE: Nominations due by midnight
January 21, 2014 to be eligible.



capitol SUBARU



Friends of Straub
ENVIRONMENTAL LEARNING CENTER



Public Works Environmental Services
503.588.5169 Se habla español
mcrecycles.net

Like Us On
facebook 

111208-07c

Become a Master Recycler

Everyone's Welcome!

To register for the class visit our
website or give us a call.

Learn more about:

- What happens to your garbage
- Waste prevention, recycling and reuse options
- How to compost and the benefits of composting
- How to build "green"
 - saving energy and resources
- Products made from recycled content
- Waste reduction topics from industry experts

Includes Field Trips!

Next class starts January 30th!



Public Works Environmental Services
503.588.5169 Se habla español
mcrecycles.net

Like Us On
facebook 



Contact:
Earthwise@co.marion.or.us
www.mcEarthwise.net

