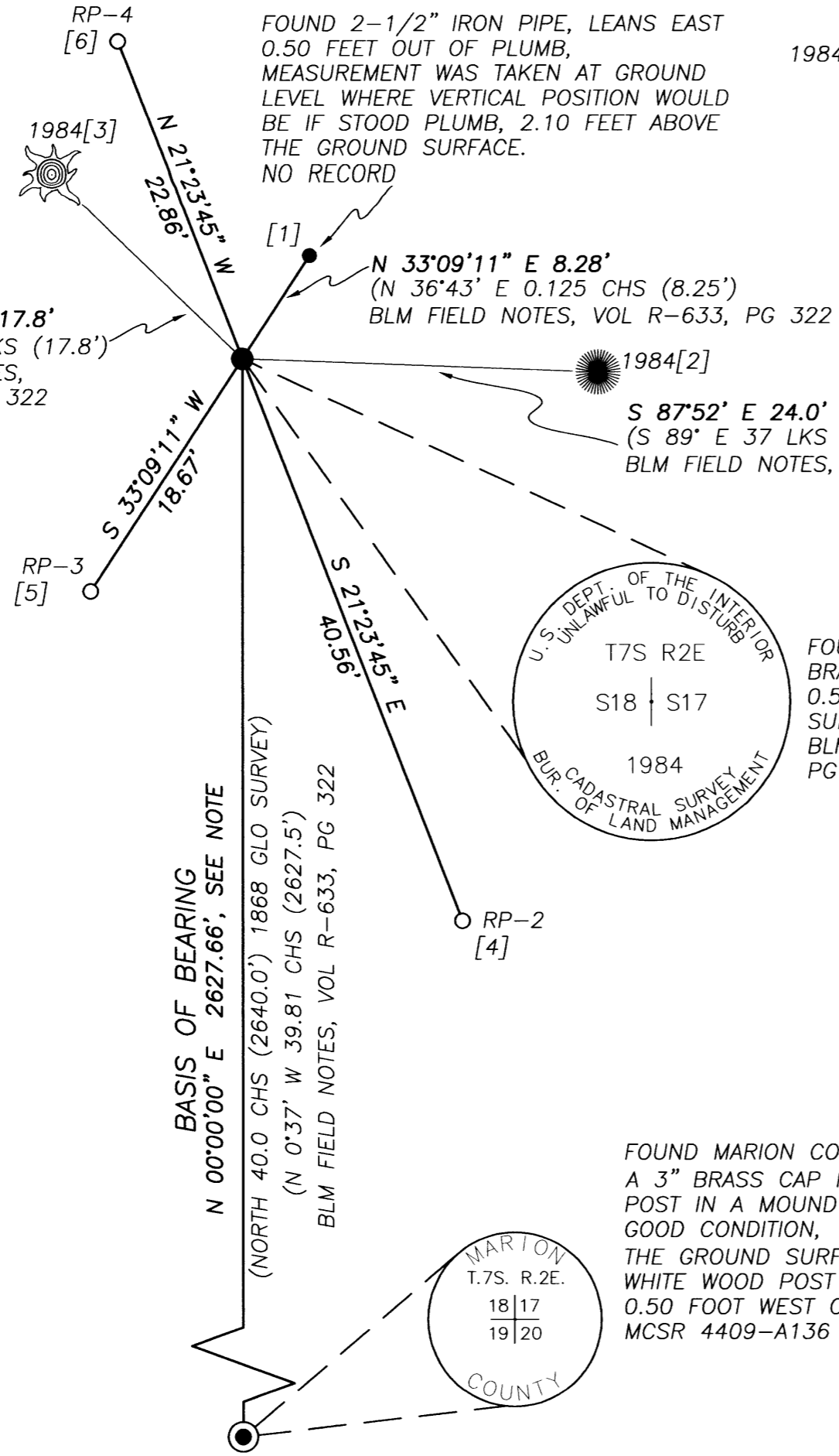


1984[3] FOUND 24" FIR STUMP 2.0 FEET TALL WITH A HEALED BLAZE AND NO BEARING TREE TAG, THE DISTANCE MEASURED WAS FROM THE CENTER OF THE STUMP, PLACED AN ORANGE #4 "DEEP ONE" MAGNET 5.00 FEET FROM THE STUMP IN LINE WITH THE MARION COUNTY MONUMENT, 0.8 FEET BELOW THE GROUND SURFACE.  
1984[3] BLM FIELD NOTES, VOL R-633, PG 322

N 45°59' W 17.8'  
N 46°15' W 27 LKS (17.8')  
BLM FIELD NOTES, VOL R-633, PG 322



BASIS OF BEARING  
N 00°00'00" E 2627.66', SEE NOTE

(NORTH 40.0 CHS (2640.0') 1868 GLO SURVEY)  
(N 0°37' W 39.81 CHS (2627.5')  
BLM FIELD NOTES, VOL R-633, PG 322

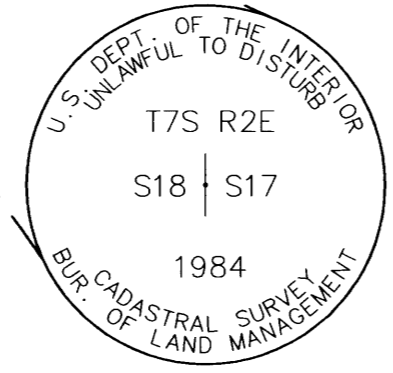
FOUND MARION COUNTY MONUMENT A 3" BRASS CAP IN A 6" CONCRETE POST IN A MOUND OF STONES, IN GOOD CONDITION, 1.00 FOOT ABOVE THE GROUND SURFACE, A 6-1/2" WHITE WOOD POST WAS ALSO FOUND 0.50 FOOT WEST OF THE CAP.  
MCSR 4409-A136

1984[2] FOUND 26" FIR WITH A HEALED BLAZE AND NO BEARING TREE TAG, THE DISTANCE MEASURED WAS FROM THE SIDE CENTER OF THE TREE, PLACED A PINK #2 "DEEP ONE" MAGNET 6.00 FEET FROM THE BEARING TREE IN LINE WITH THE MARION COUNTY MONUMENT, 0.3 FEET BELOW THE GROUND SURFACE.  
1984[2] BLM FIELD NOTES, VOL R-633, PG 322

S 87°52' E 24.0'  
(S 89° E 37 LKS (24.4')  
BLM FIELD NOTES, VOL R-633, PG 322

FOUND 2-1/2" IRON PIPE, LEANS EAST 0.50 FEET OUT OF PLUMB, MEASUREMENT WAS TAKEN AT GROUND LEVEL WHERE VERTICAL POSITION WOULD BE IF STOOD PLUMB, 2.10 FEET ABOVE THE GROUND SURFACE.  
NO RECORD

N 33°09'11" E 8.28'  
(N 36°43' E 0.125 CHS (8.25')  
BLM FIELD NOTES, VOL R-633, PG 322



FOUND BLM MONUMENT A 3-1/4" BRASS CAP, IN GOOD CONDITION, 0.5 FEET ABOVE THE GROUND SURFACE.  
BLM FIELD NOTES, VOL R-633, PG 322



SCALE: 1" = 10'



**NOTE**

THE LINE BETWEEN THE WEST QUARTER CORNER OF SECTION 17 AND THE SOUTHWEST CORNER OF SECTION 17 WAS MEASURED WITH RAPID STATIC TECHNIQUE AND REDUCED TO GROUND DISTANCES USING A COMBINED SCALE FACTOR OF 0.9998267400.

**STATE PLANE COORDINATES**

HORIZONTAL DATUM: NAD 83 CORS, EPOCH 2002.00  
BASED ON MARION COUNTY GPS COOPERATIVE CORS CONTROL POINTS MCSO, STAY AND WDBN

	GRID	ZONE	NORTHING METERS	EASTING METERS
W. 1/4 OF SECTION 17	OREGON NORTH	3601	146155.896	2334310.646
S.W. OF SECTION 17	OREGON NORTH	3601	145355.208	2334298.827

HORIZONTAL ACCURACY: +/- 0.050 M RELATIVE TO CONTROL SURVEY NOTED

RECEIVED 01/07/2008  
BY MARION COUNTY  
SURVEYOR. APPROVED  
FOR FILING ON  
01/22/2008.

**NARRATIVE**

THE PURPOSE OF THIS SURVEY IS TO PERPETUATE AND SET REFERENCE MONUMENTS TO THE FOUND MONUMENT MARKING THE QUARTER CORNER COMMON TO SECTIONS 17 AND 18, TOWNSHIP 7 SOUTH, RANGE 2 EAST, WILLAMETTE MERIDIAN, MARION COUNTY, OREGON.

A THOROUGH RESEARCH WAS PERFORMED IN THE MARION COUNTY SURVEYOR'S OFFICE TO OBTAIN ALL FILED SURVEYS AND FIELD NOTES CONTAINING INFORMATION ABOUT THIS CORNER. USING THIS INFORMATION, A FIELD SEARCH WAS MADE TO LOCATE ALL PHYSICAL EVIDENCE OF THIS CORNER AND ITS ACCESSORIES.

IN NOVEMBER OF 2007, THE MARION COUNTY SURVEYOR'S OFFICE FOUND THE BRASS CAP SET BY THE BUREAU OF LAND MANAGEMENT IN BLM FIELD NOTES, VOL R 633, PAGE 322, ALONG WITH A BEARING TREE AND THE STUMP OF A BEARING TREE, AS ESTABLISHED IN THE SAME SURVEY BY THE BLM, ACCESSORIES 1984[2] AND 1984[3]. REFER TO THE CORNER HISTORY FOR MORE DETAILS.

THE MEASUREMENT MADE FROM THE QUARTER CORNER COMMON TO SECTIONS 17 AND 18 TO THE CORNER COMMON TO SECTIONS 17, 18, 19 AND 20 AND TO FOUND BEARING TREE AND STUMP, COMPARED WELL WITH RECORD MEASUREMENTS. THE BRASS CAP WAS ACCEPTED AS MARKING THE QUARTER CORNER COMMON TO SECTIONS 17 AND 18 AND REFERENCE MONUMENTS WERE SET.

BASIS OF BEARINGS IS N 00°50'44" E, PER THE OREGON STATE PLANE COORDINATE SYSTEM, NAD 1983 CORS, EPOCH 2002.00 ADJUSTMENT, NORTH ZONE, FROM THE CORNER COMMON TO SECTIONS 17, 18, 19 AND 20 TO THE QUARTER CORNER COMMON TO SECTIONS 17 AND 18. THIS LINE HAS BEEN ROTATED TO N 00°00'00"E, AS PER THE 1868 GLO SURVEY.

**EQUIPMENT AND SPECIFICATIONS USED TO MAKE OBSERVATIONS:**

LEICA TPS 1203 TOTAL STATION WITH AN ANGULAR RESOLUTION OF THREE SECONDS, HORIZONTAL AND VERTICAL, DISTANCE TO 2MM +/- 2PPM.

LEICA 1200 GPS SYSTEM WITH RESOLUTION OF 10MM + 2PPM

**LEGEND**

- FOUND MARION COUNTY MONUMENT MARKED AS SHOWN.
- SET 5/8" X 30" REBAR WITH 2" ALUMINUM CAP MARKED "MARION COUNTY SURVEYOR" AND "RP" NUMBER.
- FOUND MONUMENT AS NOTED.
- ( ) = RECORD DATA
- IP= IRON PIPE
- IR= IRON ROD
- IB= IRON BAR
- MCM= MARION COUNTY MONUMENT
- BC= BRASS CAP
- YPC= YELLOW PLASTIC CAP
- MCSR= MARION COUNTY SURVEY RECORD
- MCSO= MARION COUNTY SURVEYORS OFFICE
- FD= FOUND
- EG= EDGE OF GRAVEL
- EP= EDGE OF PAVEMENT
- CL= CENTERLINE
- PP= POWER POLE
- RP= REFERENCE POINT
- FB= FIELD BOOK
- ROW= RIGHT-OF-WAY
- MR= MARKET ROAD
- CR= COUNTY ROAD
- DLC= DONATION LAND CLAIM
- CHS= CHAINS
- LKS= LINKS

**SURVEY FOR MARION COUNTY**

SITUATED IN THE WEST 1/2 OF SECTION 17 AND THE EAST 1/2 OF SECTION 18, TOWNSHIP 7 SOUTH, RANGE 2 EAST, WILLAMETTE MERIDIAN, MARION COUNTY, OREGON.

DATE: NOV. 19, 2007    SCALE: 1" = 10'    CREW: WK AND GM  
MARION COUNTY SURVEYORS OFFICE 5155 SILVERTON RD. SALEM OR 97305

REGISTERED PROFESSIONAL LAND SURVEYOR  
*Mark E. Riggins*  
JULY 13, 1979  
OREGON  
MARK E. RIGGINS  
#1857  
EXPIRES 12-31-08

CORNER HISTORY

DATE DECEMBER 15, 1868 SET CORNER	SURVEYOR MELDRUM STONE 11" X 9" X 6"	RECORD VOL R-86, PG 171
DATE JUNE 1, 1885 SET CORNER	SURVEYOR NEWSOM STONE 12" X 10" X 5" MARKED "CS"	RECORD MCSR 874
DATE NOVEMBER 5, 1984 FOUND CORNER	SURVEYOR TUERS ORIGINAL BASALT STONE 11" X 9" X 6" FIRMLY SET PROJECTING 6" ABOVE GROUND, MARKED " 1/4 " ON WEST FACE	RECORD VOL R-633, PG 322
FOUND ACCESSORY	[1] 3" IRON PIPE PROJECTING 24" ABOVE GROUND FIRMLY SET BEARS N 36°43' E 0.125 CHS (8.3')	
SET CORNER	IRON POST 28" LONG, 2-1/2" DIA., 24" IN THE GROUND WITH A BRASS CAP	
SET ACCESSORY	[2] 26" FIR BEARS S 89° E 37 LKS (24.4') MARKED " 1/4 S17 BT "	
SET ACCESSORY	[3] 18" FIR BEARS N 46°15' W 27 LKS (17.8') MARKED " 1/4 S18 BT "	
DATE JUNE 1, 1986 FOUND	SURVEYOR TRAPP BRASS CAP	RECORD MCSR 30641

DATE NOVEMBER 19, 2007	SURVEYOR RIGGINS	RECORD FB 1167, PG 38-39, FB1166, PG 3-5, FB 1159, PG 51-55
FOUND CORNER	BLM MONUMENT A 3-1/4" BRASS CAP, IN GOOD CONDITION, 0.5' ABOVE THE GROUND SURFACE.	
FOUND ACCESSORY	[1] 2-1/2" IRON PIPE, LEANS EAST 0.50' OUT OF PLUMB, MEASUREMENT WAS TAKEN AT GROUND LEVEL WHERE VERTICAL POSITION WOULD BE IF STOOD PLUMB, 2.10' ABOVE THE GROUND SURFACE, BEARS N 33°09'11" E 8.28'.	
FOUND ACCESSORY	1984[2] 26" FIR WITH A HEALED BLAZE AND NO BEARING TREE TAG, BEARS S 87°52' E 24.0', THE DISTANCE MEASURED WAS FROM THE SIDE CENTER OF THE TREE, PLACED A PINK #2 "DEEP ONE" MAGNET 6.00' FROM THE BEARING TREE IN LINE WITH THE MARION COUNTY MONUMENT, 0.3' BELOW THE GROUND SURFACE.	
FOUND ACCESSORY	1984[3] 24" FIR STUMP 2.0' TALL WITH A HEALED BLAZE AND NO BEARING TREE TAG, BEARS N 45°59' W 17.8', THE DISTANCE MEASURED WAS FROM THE CENTER OF THE STUMP, PLACED AN ORANGE #4 "DEEP ONE" MAGNET 5.00' FROM THE STUMP IN LINE WITH THE MARION COUNTY MONUMENT, 0.8' BELOW THE GROUND SURFACE.	
SET ACCESSORY	[4] 2" ALUMINUM CAP ON TOP OF 5/8" X 30" REBAR, CAP STAMPED "MARION COUNTY SURVEYOR RP-2" BEARS S 21°23'45" E 40.56', SET 2.00' BELOW THE GROUND SURFACE	
SET ACCESSORY	[5] 2" ALUMINUM CAP ON TOP OF 5/8" X 30" REBAR, CAP STAMPED "MARION COUNTY SURVEYOR RP-3" BEARS S 33°09'11" W 18.67', SET 2.00' BELOW THE GROUND SURFACE	
SET ACCESSORY	[6] 2" ALUMINUM CAP ON TOP OF 5/8" X 30" REBAR, CAP STAMPED "MARION COUNTY SURVEYOR RP-4" BEARS N 21°23'45" W 22.86', SET 1.50' BELOW THE GROUND SURFACE	

SURVEY FOR MARION COUNTY

SITUATED IN THE WEST 1/2 OF SECTION 17 AND THE EAST 1/2 OF SECTION 18, TOWNSHIP 7 SOUTH, RANGE 2 EAST, WILLAMETTE MERIDIAN, MARION COUNTY, OREGON.

DATE: NOV. 19, 2007    SCALE: 1" = 10'    CREW: WK AND GM

MARION COUNTY SURVEYORS OFFICE 5155 SILVERTON RD. SALEM OR 97305

REGISTERED PROFESSIONAL LAND SURVEYOR

*Mark E. Riggins*  
OREGON  
JULY 13, 1979  
MARK E. RIGGINS  
#1857

EXPIRES 12-31-08