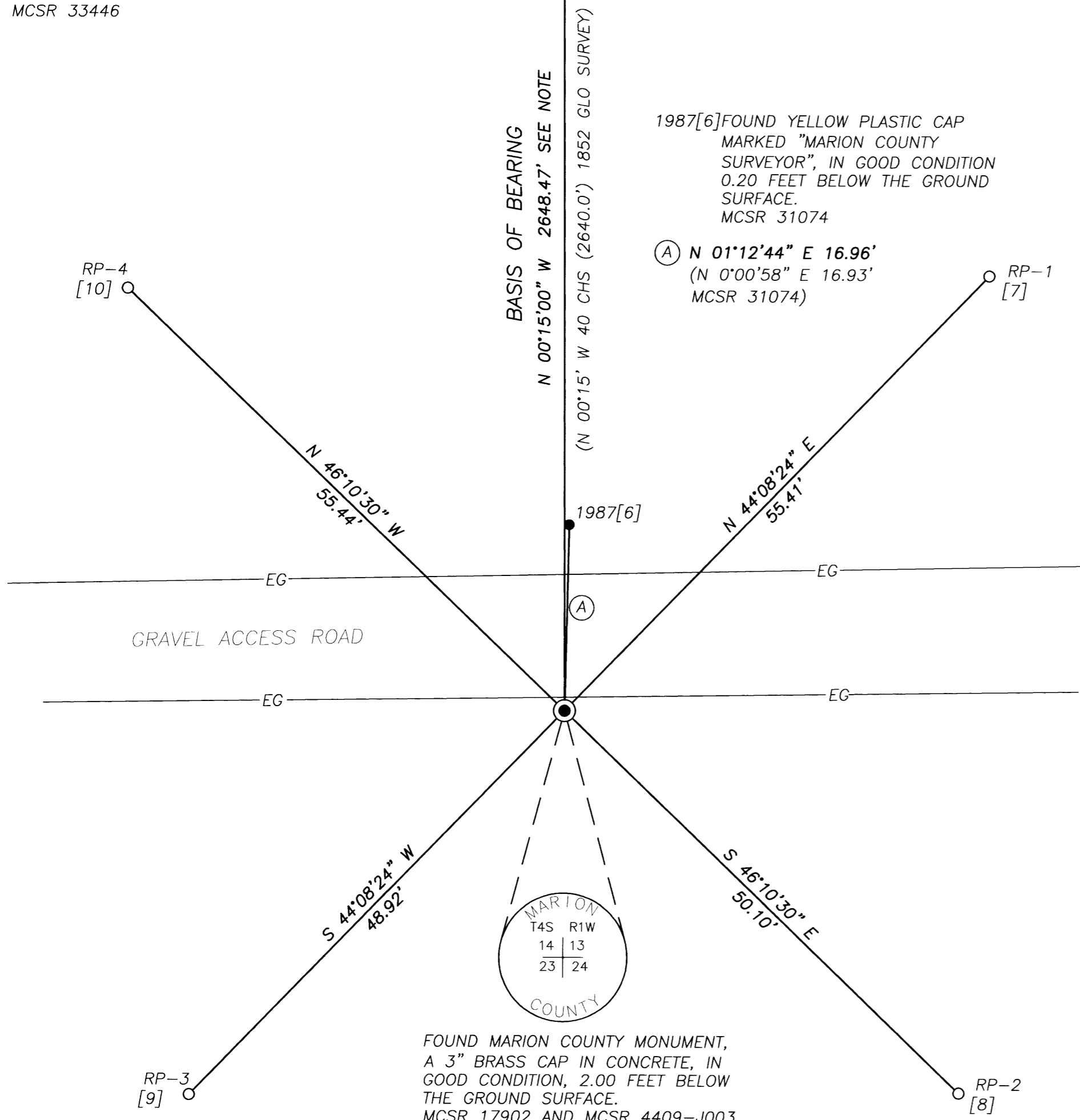
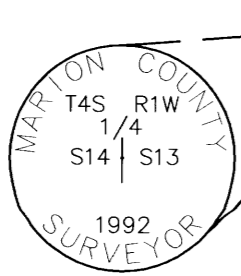


FOUND MARION COUNTY MONUMENT,
A 3" BRASS CAP IN A 6" PVC PIPE
FILLED WITH CONCRETE, IN GOOD
CONDITION, 2.00 FEET BELOW THE
GROUND SURFACE.
MCSR 33446



NARRATIVE

THE PURPOSE OF THIS SURVEY IS TO PERPETUATE AND SET REFERENCE MONUMENTS TO THE FOUND MONUMENT MARKING THE CORNER COMMON TO SECTIONS 13, 14, 23 AND 24, TOWNSHIP 4 SOUTH, RANGE 1 WEST, WILLAMETTE MERIDIAN, MARION COUNTY, OREGON.

A THOROUGH RESEARCH WAS PERFORMED IN THE MARION COUNTY SURVEYOR'S OFFICE TO OBTAIN ALL FILED SURVEYS AND FIELD NOTES CONTAINING INFORMATION ABOUT THIS CORNER. USING THIS INFORMATION, A FIELD SEARCH WAS MADE TO LOCATE ALL PHYSICAL EVIDENCE OF THIS CORNER AND ITS ACCESSORIES.

IN APRIL OF 2008, THE MARION COUNTY SURVEYOR'S OFFICE FOUND THE MONUMENT SET BY THE MARION COUNTY SURVEYOR'S OFFICE IN MCSR 17902 AND MCSR 4409-J003 AND THE YELLOW PLASTIC CAP MARKED "MARION COUNTY SURVEYOR" SET BY RICHARDSON IN MCSR 31074, ACCESSORY 1987[6]. REFER TO THE CORNER HISTORY FOR MORE DETAILS.

THE MEASUREMENT MADE FROM THE CORNER COMMON TO SECTIONS 13, 14, 23 AND 24 TO THE QUARTER CORNER COMMON TO SECTIONS 13 AND 14 AND TO THE YELLOW PLASTIC CAP MARKED "MARION COUNTY SURVEYOR", ACCESSORY 1987[6], COMPARED WELL WITH RECORD MEASUREMENTS. THE BRASS CAP WAS ACCEPTED AS MARKING THE CORNER COMMON TO SECTIONS 13, 14, 23 AND 24. MARION COUNTY REFERENCE MONUMENTS WERE SET.

BASIS OF BEARINGS IS N 01°14'27"E, PER THE OREGON STATE PLANE COORDINATE SYSTEM, NAD 1983 CORRS, EPOCH 2002.00 ADJUSTMENT, NORTH ZONE, FROM THE CORNER COMMON TO SECTIONS 13, 14, 23 AND 24 TO THE QUARTER CORNER COMMON TO SECTIONS 13 AND 14. THIS LINE HAS BEEN ROTATED TO N 00°15'00" W, AS PER THE 1852 GLO SURVEY.

EQUIPMENT AND SPECIFICATIONS USED TO MAKE OBSERVATIONS:

LEICA TPS 1203 TOTAL STATION WITH AN ANGULAR RESOLUTION OF THREE SECONDS, HORIZONTAL AND VERTICAL, DISTANCE TO 2MM +/- 2PPM.

LEGEND

- FOUND MARION COUNTY MONUMENT MARKED AS SHOWN.
- SET 5/8" X 30" REBAR WITH 2" ALUMINUM CAP MARKED "MARION COUNTY SURVEYOR" AND "RP" NUMBER.
- FOUND MONUMENT AS NOTED.
- () = RECORD DATA
- IP= IRON PIPE
- IR= IRON ROD
- IB= IRON BAR
- MCM= MARION COUNTY MONUMENT
- BC= BRASS CAP
- YPC= YELLOW PLASTIC CAP
- MCSR= MARION COUNTY SURVEY RECORD
- MCSO= MARION COUNTY SURVEYORS OFFICE
- FD= FOUND
- EG= EDGE OF GRAVEL
- EP= EDGE OF PAVEMENT
- CL= CENTERLINE
- PP= POWER POLE
- RP= REFERENCE POINT
- FB= FIELD BOOK
- ROW= RIGHT-OF-WAY
- MR= MARKET ROAD
- CR= COUNTY ROAD
- DLC= DONATION LAND CLAIM
- CHS= CHAINS
- LKS= LINKS

NOTE

THE LINE BETWEEN THE SOUTHWEST CORNER OF SECTION 13 AND THE WEST QUARTER CORNER OF SECTION 13 WAS MEASURED USING 2 INDEPENDENT OBSERVATIONS WITH GPS REAL TIME KINEMATIC TECHNIQUE AND REDUCED TO GROUND DISTANCES USING A COMBINED SCALE FACTOR OF 0.99989059889.

STATE PLANE COORDINATES

HORIZONTAL DATUM: NAD 83 CORRS, EPOCH 2002.00
 BASED ON MARION COUNTY GPS COOPERATIVE CORRS CONTROL POINTS MCSO, STAY AND WDBN

	GRID	ZONE	NORTHING METERS	EASTING METERS
S.W. CORNER OF SECTION 13	OREGON NORTH	3601	174674.256	2322190.757
W. 1/4 CORNER OF SECTION 13	OREGON NORTH	3601	175481.233	2322208.235

HORIZONTAL ACCURACY: +/- 0.050 METERS RELATIVE TO CONTROL SURVEY NOTED

RECEIVED 04/30/2008
 BY MARION COUNTY
 SURVEYOR. APPROVED
 FOR FILING ON
 05/19/2008.

SURVEY FOR MARION COUNTY

SITUATED IN THE WEST 1/2 OF SECTION 13,
 THE EAST 1/2 OF SECTION 14, THE NE 1/4 OF SECTION 23,
 AND THE NW 1/4 OF SECTION 24
 TOWNSHIP 4 SOUTH, RANGE 1 WEST,
 WILLAMETTE MERIDIAN, MARION COUNTY, OREGON.

DATE: APRIL 14, 2008	SCALE: 1" = 10'	CREW: WK AND JG
MARION COUNTY SURVEYORS OFFICE 5155 SILVERTON RD. SALEM OR 97305		

REGISTERED
 PROFESSIONAL
 LAND SURVEYOR

Mark E. Riggins

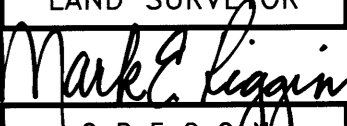
OREGON
 JULY 13, 1979
 MARK E. RIGGINS
 #1857

EXPIRES 12-31-08

CORNER HISTORY

DATE	SURVEYOR	RECORD
JULY 04, 1852	IVES	VOL R-13, PG 10/210
SET CORNER	POST	
SET ACCESSORY	[1] 20" FIR BEARS N 45' W 84 LKS (55.4')	
SET ACCESSORY	[2] 18" FIR BEARS S 30'30" W 125 LKS (82.5')	
SET ACCESSORY	[3] 16" FIR BEARS S 73' E 496 LKS (327.4')	
SET ACCESSORY	[4] 40" FIR BEARS N 58'30" E 253 LKS (167.0')	
MARCH 04, 1893	HERRICK	MCSR 2775
FOUND CORNER	OLD STAKE WITH MARKS	
SET CORNER	STONE 10"X 8"X 8", DOWN 22", WITH WHISKY BOTTLE AND GLASS INSULATOR.	
SET ACCESSORY	[1] PLOW SHEAR BEARS N 55' E 19LKS (12.5')	
SET ACCESSORY	[2] STONE 8"X 8"X 3" MARKED BT BEARS N 48' 15' W 15 LKS (9.9')	
AUGUST 16, 1911		MCSR 507-087
FOUND CORNER	PLACE NOT IDENTIFIED	
APRIL 01, 1946	PROPP	MCSR 10325
FOUND CORNER	NOT IDENTIFIED	
APRIL 11, 1963	BARNES	MCSR 17580
FOUND CORNER	STONE	
OCTOBER 01, 1963	GRAHAM	MCSR 17902/ MCSR 4409-J003
FOUND CORNER	STONE	
SET CORNER	COUNTY MONUMENT A BRASS CAP	
SET ACCESSORY	[5] IRON PIPE BEARS NORTH 9.90'	
AUGUST 01, 1976	JONES	MCSR 25622
FOUND CORNER	COUNTY MONUMENT	
MARCH 01, 1977	JONES	MCSR 26052
FOUND CORNER	BRASS CAP	
MARCH 18, 1977	GIERING	MCSR 26073A
FOUND CORNER	M.C.M.	

DATE	SURVEYOR	RECORD
AUGUST 06, 1982	REPPETO	MCSR 29448
FOUND CORNER	"MARION COUNTY" BRASS CAP, TILED, DISTURBED	
OCTOBER 12, 1987	RICHARDSON	MCSR 31074
FOUND CORNER	BRASS DISK IN CONCRETE-LOWERED MONUMENT TO A DEPTH OF 22" BELOW SURFACE.	
SET ACCESSORY	[6] 5/8" X 30" IRON ROD WITH PLASTIC CAP "MARION COUNTY" AT CENTERLINE OF ROAD, BEARS N 0°00'58" E 16.93'.	
NOVEMBER 04, 1993	NETTLETON	MCSR 33686
FOUND CORNER	MARION COUNTY BRASS CAP	
MARCH 15, 2004	GORMAN	MCSR 36491
FOUND CORNER	3.25" MARION COUNTY ALUMINUM CAP STAMPED "TS4 R1W S14 S13 S23 S24" DOWN 2'	
APRIL 14, 2008	RIGGINS	FB 1172, PG 18-20, FB 1169, PG 4-5 & 29-31
FOUND CORNER	MARION COUNTY MONUMENT, A 3" BRASS CAP IN CONCRETE, IN GOOD CONDITION, 2.00' BELOW THE GROUND SURFACE. A 1-1/2" IRON PIPE WAS ALSO FOUND 0.60' NORTH OF THE BRASS CAP.	
FOUND ACCESSORY	1987[6] YELLOW PLASTIC CAP MARKED "MARION COUNTY SURVEYOR", IN GOOD CONDITION 0.20' BELOW THE GROUND SURFACE, BEARS N 01°12'44" E 16.96	
SET ACCESSORY	[7] 2" ALUMINUM CAP ON TOP OF 5/8" X 30" REBAR, CAP STAMPED "MARION COUNTY SURVEYOR RP-1" BEARS N 44°08'24" E 55.41', SET 2.00' BELOW THE GROUND SURFACE	
SET ACCESSORY	[8] 2" ALUMINUM CAP ON TOP OF 5/8" X 30" REBAR, CAP STAMPED "MARION COUNTY SURVEYOR RP-2" BEARS S 46°10'30" E 50.10', SET 2.00' BELOW THE GROUND SURFACE	
SET ACCESSORY	[9] 2" ALUMINUM CAP ON TOP OF 5/8" X 30" REBAR, CAP STAMPED "MARION COUNTY SURVEYOR RP-3" BEARS S 44°08'24" W 48.92', SET 2.00' BELOW THE GROUND SURFACE	
SET ACCESSORY	[10] 2" ALUMINUM CAP ON TOP OF 5/8" X 30" REBAR, CAP STAMPED "MARION COUNTY SURVEYOR RP-4" BEARS N 46°10'30" W 55.44', SET 2.00' BELOW THE GROUND SURFACE	

<p>SURVEY FOR MARION COUNTY SITUATED IN THE WEST 1/2 OF SECTION 13, THE EAST 1/2 OF SECTION 14, THE NE 1/4 OF SECTION 23, AND THE NW 1/4 OF SECTION 24 TOWNSHIP 4 SOUTH, RANGE 1 WEST, WILLAMETTE MERIDIAN, MARION COUNTY, OREGON.</p>			<p>REGISTERED PROFESSIONAL LAND SURVEYOR</p>  <p>OREGON JULY 13, 1978 MARK E. RIGGINS #1857</p>
DATE: APRIL 14, 2008	SCALE: 1" = 10'	CREW: WK AND JG	
<p>MARION COUNTY SURVEYORS OFFICE 5155 SILVERTON RD. SALEM OR 97305</p>			<p>EXPIRES 12-31-08</p>