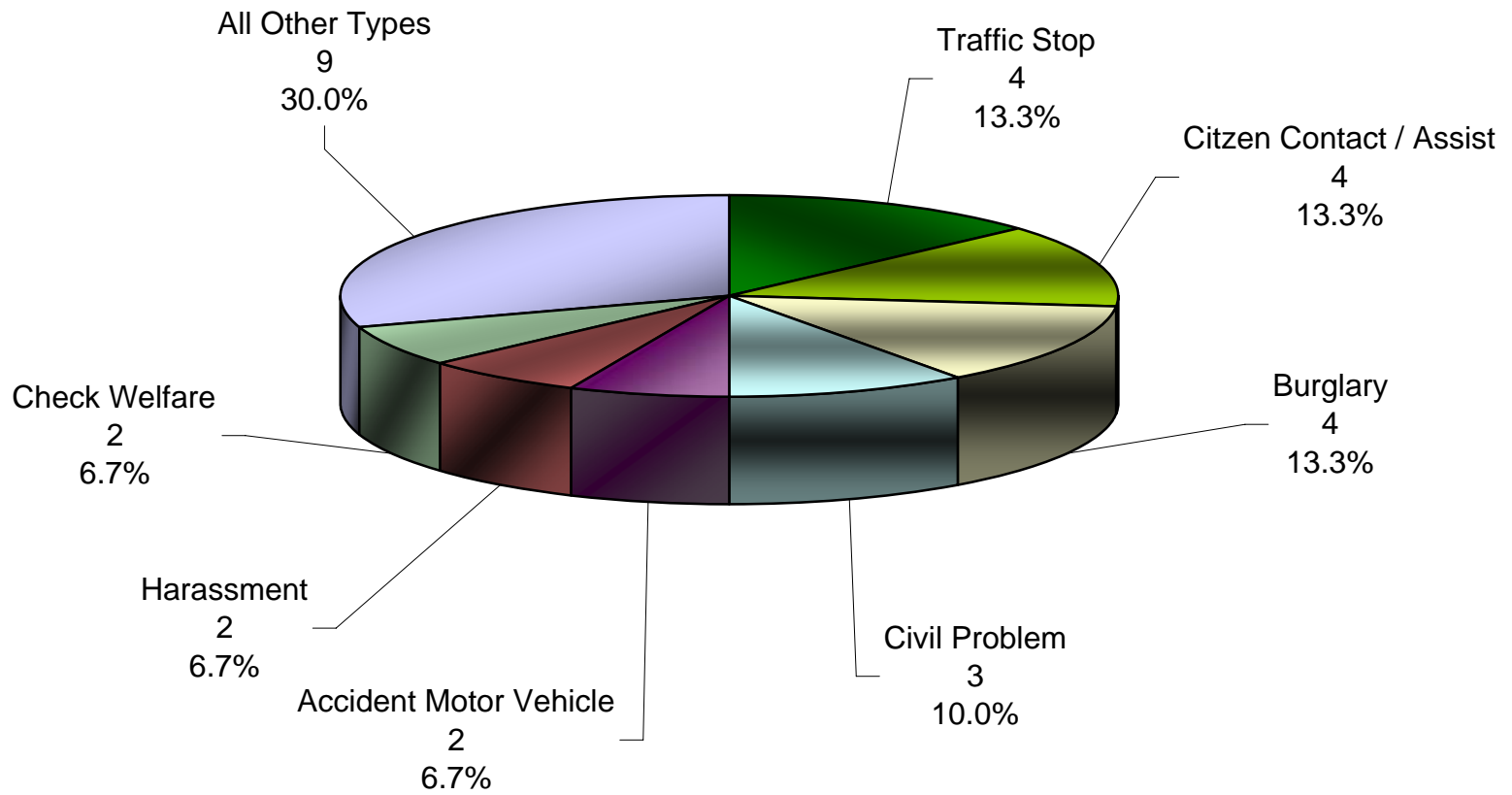
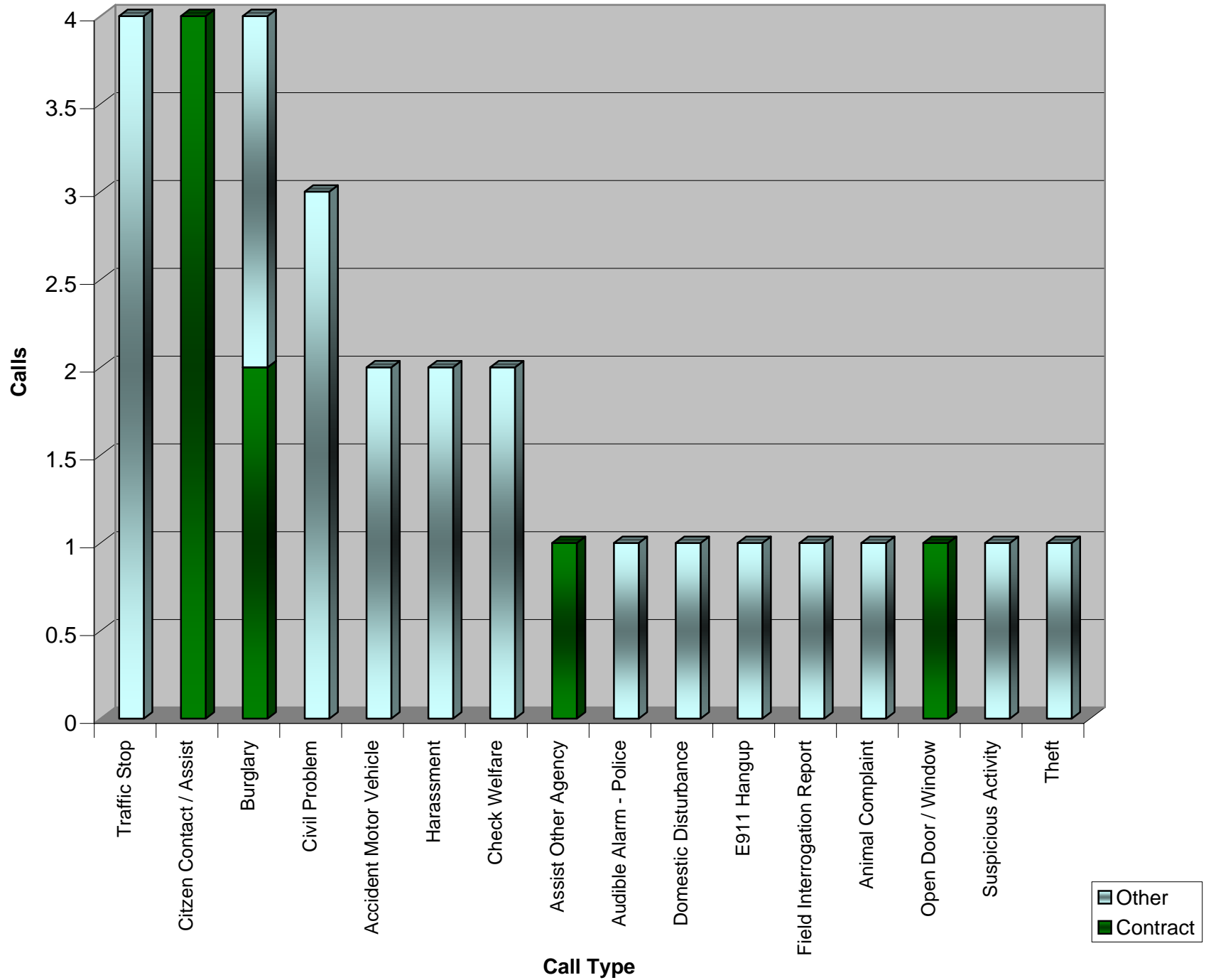


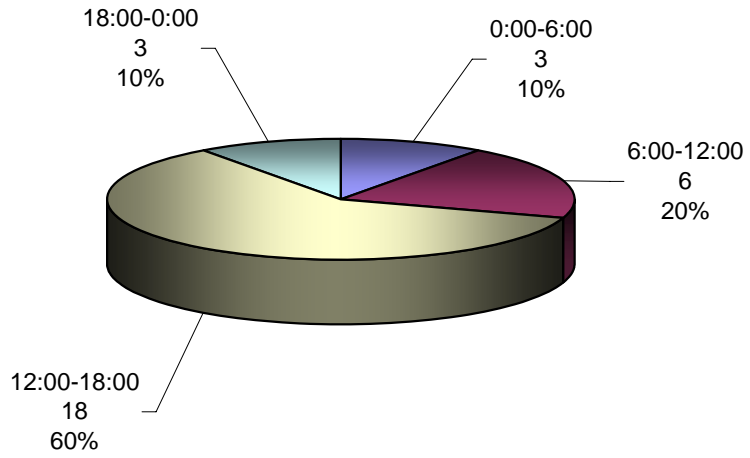
# Sublimity Top Calls for Service January 2012



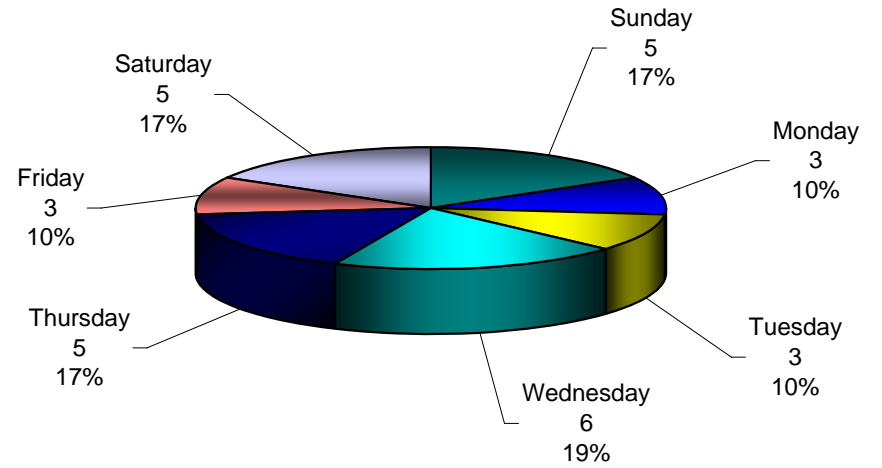
# Call Type by Primary Deputy January 2012



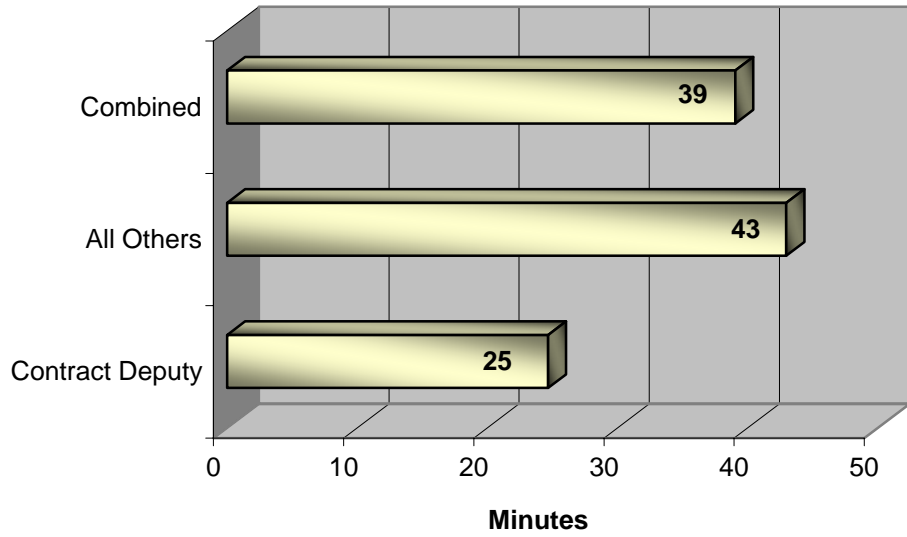
**Sublimity Calls for Service by Hours Range  
January 2012**



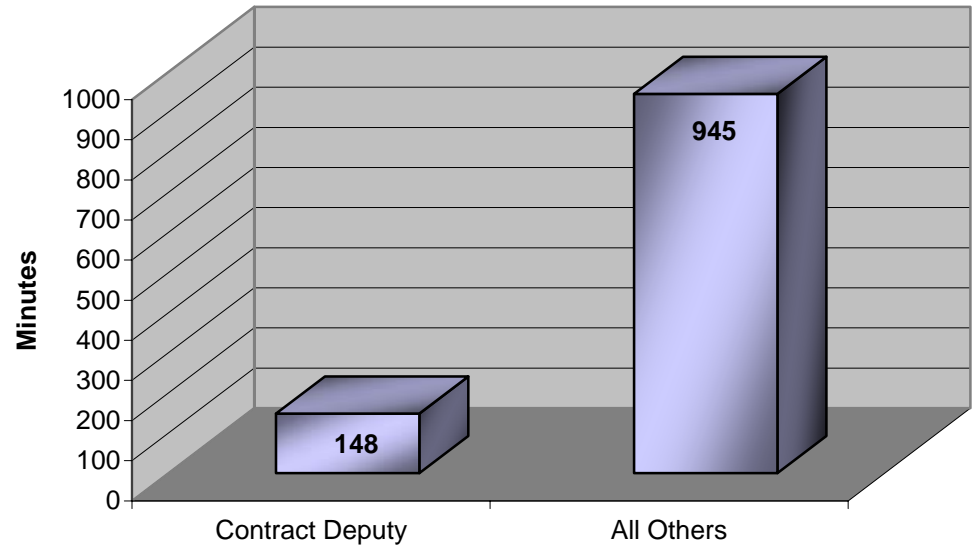
**Sublimity Calls for Service by Day of Week  
January 2012**



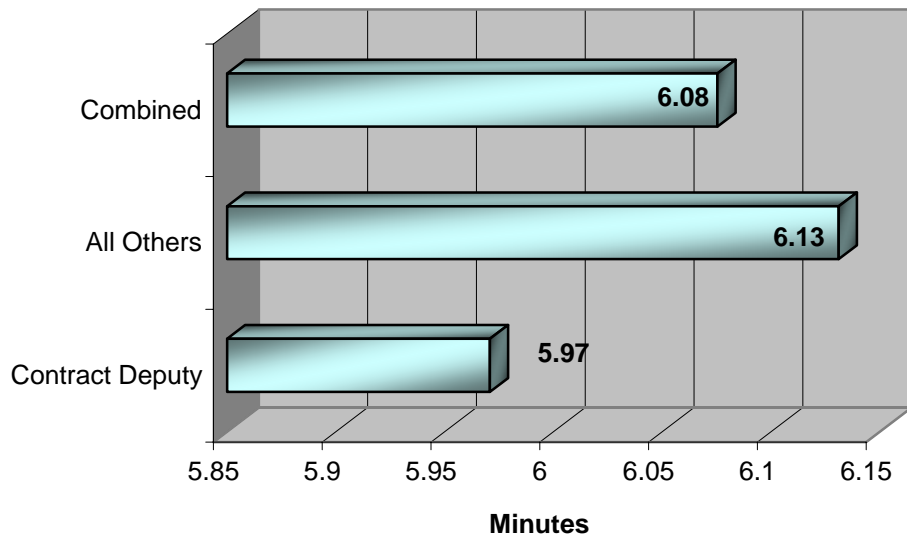
**Sublimity Calls Average Call Length  
January 2012**



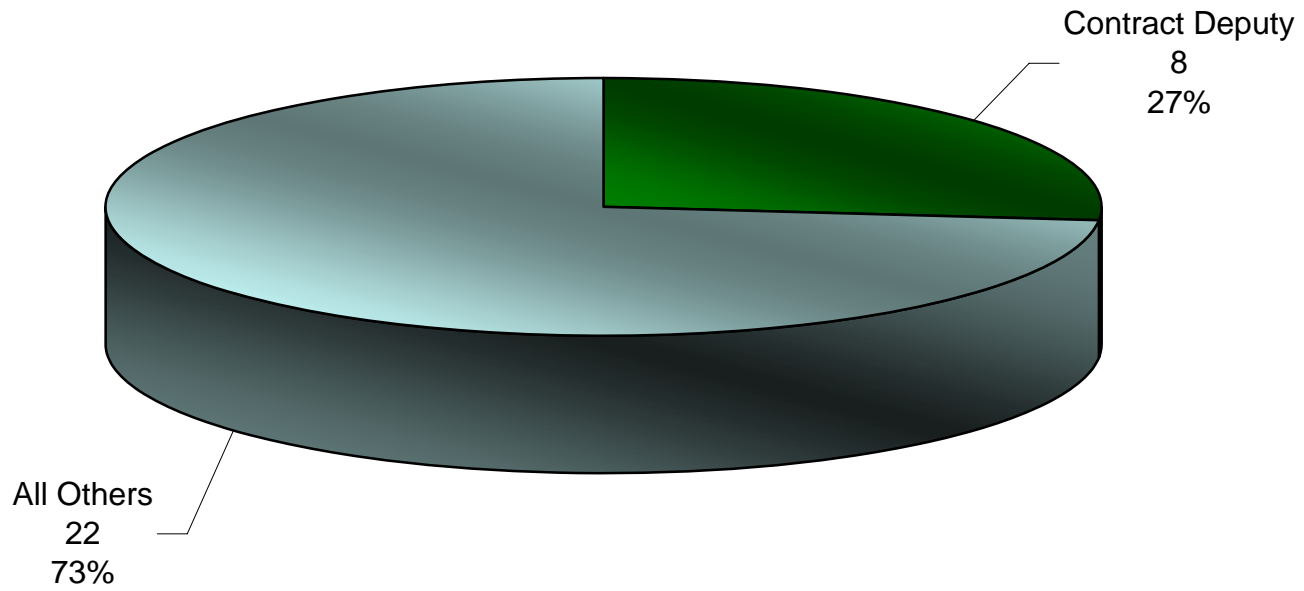
**Sublimity Calls Total Call Length  
January 2012**



**Sublimity Calls Average Call Arrival Time  
January 2012**



**Sublimity Calls by Primary Deputy  
January 2012**



Sublimity Calls for Service January 2012

EVENTID	CASEID	Combined Type	PRIMARY_UNIT	CREATE_DATE	DISPATCH_DATE	ARRIVAL_DATE	CLEARED_DATE	Arrival in Minutes	Call Length in Minutes	Location	Zip
E12001091	SMS12000079	Harassment	A150	1/2/2012 14:27	1/2/2012 14:46		1/2/2012 15:52		65.40	345 NE STARR ST :[APT W] :@SUMMERSET APTS	97385
E12001352		Check Welfare		1/2/2012 22:34			1/2/2012 22:38		4.42	:@SUMMERSET APTS	97385
E12002381	SMS12000178	Citizen Contact / Assist	A175	1/4/2012 10:21		1/4/2012 10:21	1/4/2012 11:05	0.00	43.62	246 NE STARR ST	97385
E12002709	SMS12000199	Assist Other Agency	A175	1/4/2012 15:50		40912.6598	1/4/2012 15:54	0.02	3.88	145 NW JOHNSON ST	97385
E12003119	SMS12000240	Suspicious Activity	A155	1/5/2012 8:00	1/5/2012 8:02	1/5/2012 8:16	1/5/2012 8:26	15.78	10.33	NE CREST ST & N CENTER ST	97385
E12007449	SMS12000539	Open Door / Window	A175	1/10/2012 13:55	1/10/2012 13:56	40918.58334	1/10/2012 14:20	4.20	20.08	340 SE DENNY ST	97385
E12008066	SMS12000599	Citizen Contact / Assist	A175	1/11/2012 10:58		1/11/2012 10:58	1/11/2012 12:09	0.00	71.17	N CENTER ST & NW STARR ST	97385
E12008156		Traffic Stop	A153	1/11/2012 13:18	40919.55459	1/11/2012 13:18	1/11/2012 13:22	0.00	3.92	S CENTER ST & W MAIN ST : 156DLS	97385
E12008167		Traffic Stop	A153	1/11/2012 13:25	1/11/2012 13:25	1/11/2012 13:25	1/11/2012 13:31	0.02	5.85	S CENTER ST & SE DENNY ST : URZ530	97385
E12008850	SMS12000652	Citizen Contact / Assist	A175	1/12/2012 11:52		1/12/2012 11:52	1/12/2012 11:55	0.00	3.02	15000 BLOCK OF COON HOLLOW RD	
E12009598	SMS12000705	Burglary	A175	1/13/2012 11:39	1/13/2012 12:07	1/13/2012 12:10	1/26/2012 15:40	31.72		217 SE DENNY ST	97385
E12009803		Burglary		1/13/2012 15:09			1/13/2012 15:26		16.15	217 SE DENNY ST	97385
E12011368		Field Interrogation Report	A416	1/15/2012 14:44	1/15/2012 14:44	1/15/2012 14:44	1/15/2012 14:50	0.02	6.23	615 SW 7TH ST	97385
E12011937	SMS12000889	Accident Motor Vehicle	A144	1/16/2012 14:12	40924.59516	1/16/2012 14:18	1/16/2012 14:41	5.28	23.92	SE PINE ST & SE CHURCH ST	97385
E12012421		Civil Problem	A167	1/17/2012 10:54		1/17/2012 10:54	1/17/2012 11:00	0.00	6.50	74 SW EMERALD PL	97385
E12013262		Traffic Stop	A156	1/18/2012 13:54	1/18/2012 13:54	1/18/2012 13:54	1/18/2012 13:56	0.02	2.02	E MAIN ST & N CENTER ST	97385
E12013852		Civil Problem	A167	1/19/2012 10:25		1/19/2012 10:25	1/19/2012 10:33	0.00	7.92	74 SW EMERALD PL	97385
E12014117	SMS12001061	Citizen Contact / Assist	A175	1/19/2012 14:59		1/19/2012 14:59	1/19/2012 15:05	0.00	6.20	482 S CENTER STREET	97385
E12014920		Traffic Stop	A156	1/20/2012 14:17	40928.59523	1/20/2012 14:17	1/20/2012 14:27	0.00	9.88	NW HARTMANN AV & NW STARR ST :975FAB	97385
E12015420	SMS12001146	Domestic Disturbance	A107	1/21/2012 2:58	1/21/2012 3:00	40929.13361	1/21/2012 6:01	14.22	169.15	134 NW JOHNSON ST	97385
E12015446	SMS12001153	E911 Hangup	A111	1/21/2012 4:47	1/21/2012 4:48	1/21/2012 5:06	1/21/2012 5:30	18.60	24.30	500 SW SUBLIMITY BV	97385
E12015715	SMS12001176	Animal Complaint	A150	1/21/2012 15:29	1/21/2012 15:30	1/21/2012 15:45	1/21/2012 15:57	16.62	11.70	115 NW PARKER ST :@SUBLIMITY RURAL FIRE DEPARTMENT :@SUBLIMITY RURAL FIRE DEPARTMENT	97385
E12015919	SMS12001194	Theft	A114	1/21/2012 21:29	1/21/2012 21:45		1/21/2012 22:18		33.52	113 SW 9TH ST	97385
E12016038	SMS12001204	Harassment	A111	1/22/2012 0:26	40930.03547		1/22/2012 1:03		12.18	340 NE CREST ST	97385
E12016340	SMS12001231	Audible Alarm - Police	A029	1/22/2012 13:28	1/22/2012 13:31		1/22/2012 13:44		12.83	231 NW STARR ST	97385
E12016461	SMS12001242	Check Welfare	A113	1/22/2012 17:16	1/22/2012 17:17	1/22/2012 17:23	1/22/2012 23:43	7.08	379.53	340 NE CREST ST :[UNIT 5]	97385
E12017888	SMS12001366	Accident Motor Vehicle	A155	1/24/2012 13:53	1/24/2012 13:53	1/24/2012 13:53	1/24/2012 15:03	0.02	69.23	431 E MAIN ST :@SUBLIMITY ELEMENTARY SCHOOL :@SUBLIMITY ELEMENTARY SCHOOL	97385
E12020005	SMS12001523	Civil Problem	A141	1/26/2012 22:48	1/26/2012 22:50	1/26/2012 23:03	1/26/2012 23:53	14.32	50.10	104 SE BROADWAY ST	97385
E12021428	SMS12001614	Burglary	A175	1/28/2012 16:03	1/28/2012 16:05	1/28/2012 16:14	1/31/2012 9:33	11.83		103 S CENTER ST :[A113]	97385
E12022146		Burglary	A181	1/29/2012 16:08	1/29/2012 16:10		1/29/2012 16:30		20.05	103 S CENTER ST, CANYONS EDGE CAFE	97385