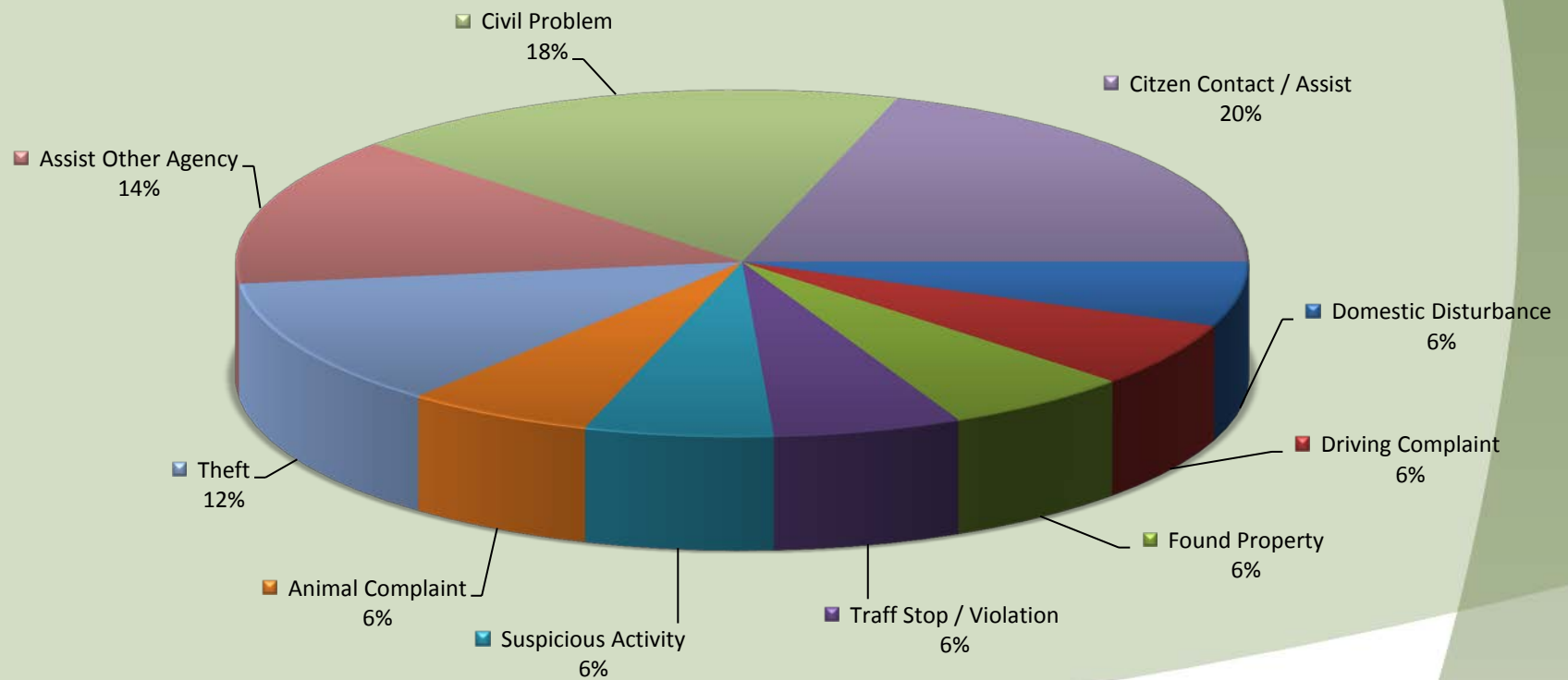
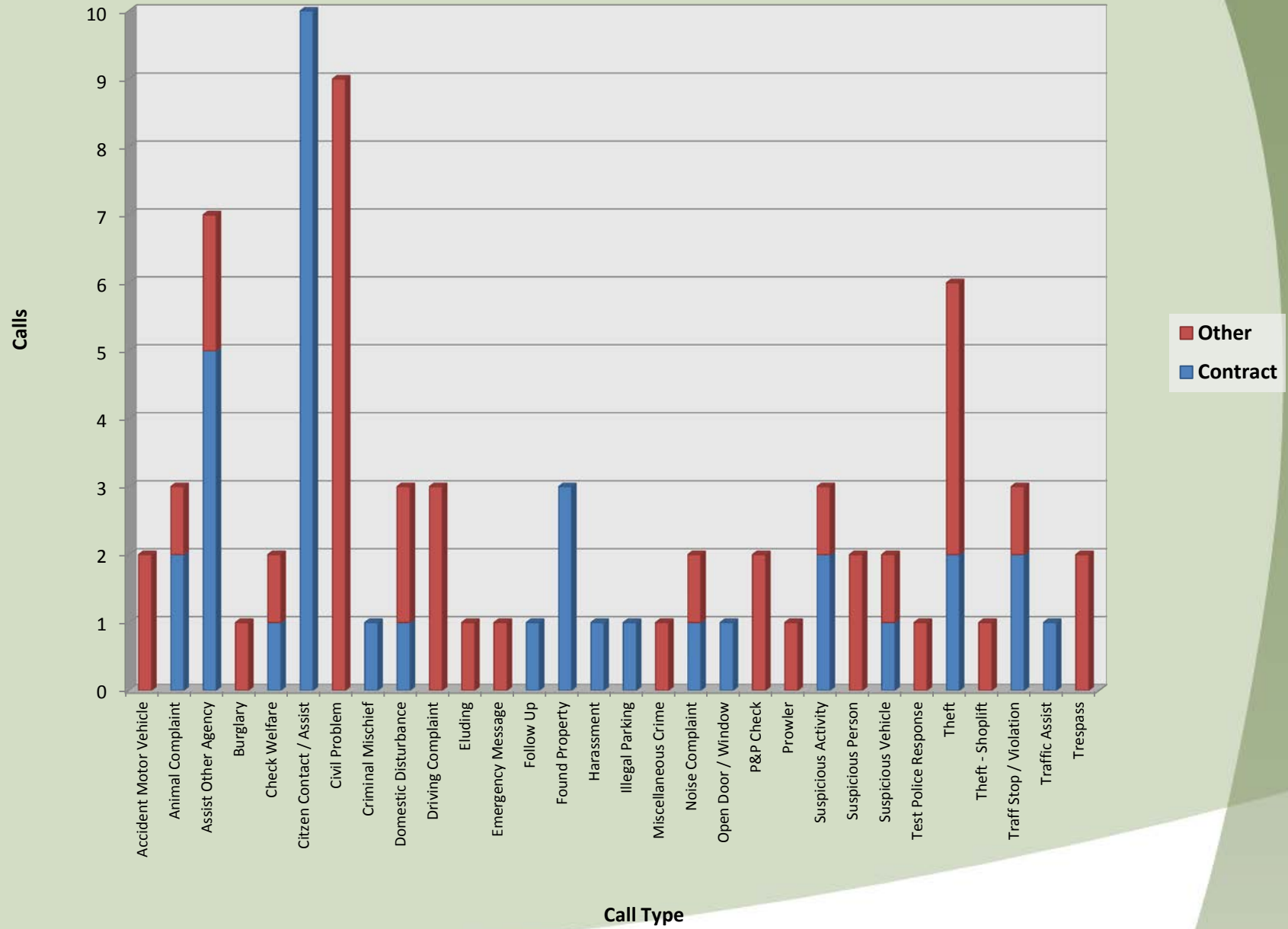


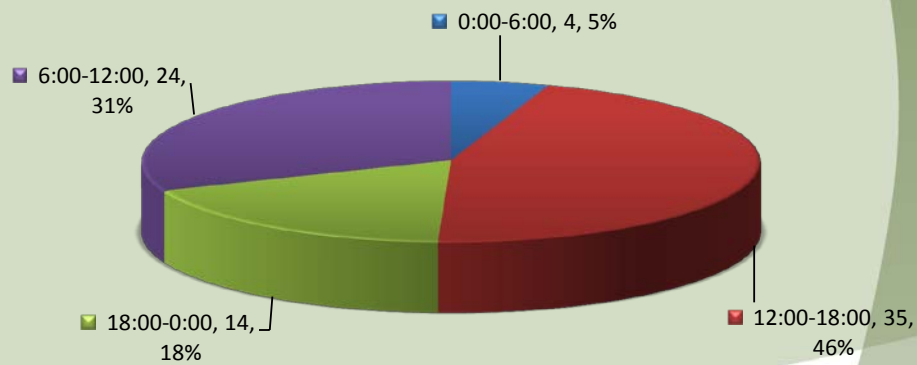
# City of Jefferson Top Calls for Service December 2016



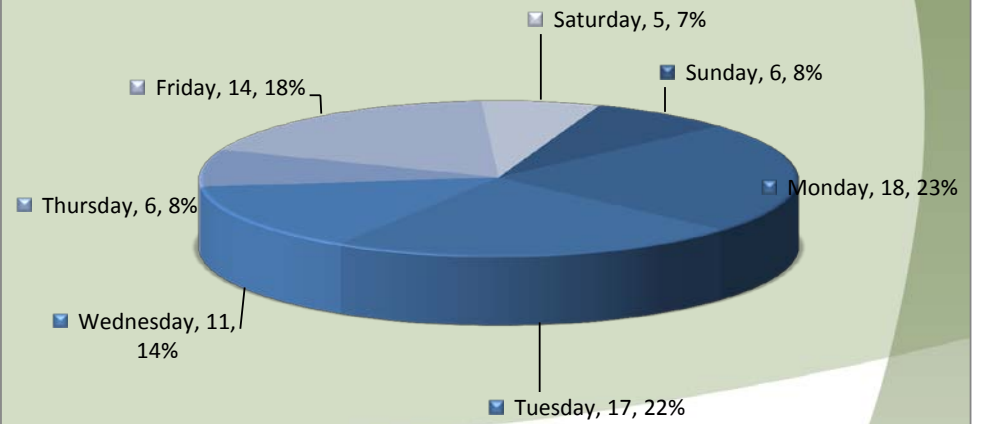
## Call Type by Primary Deputy Jefferson - December 2016



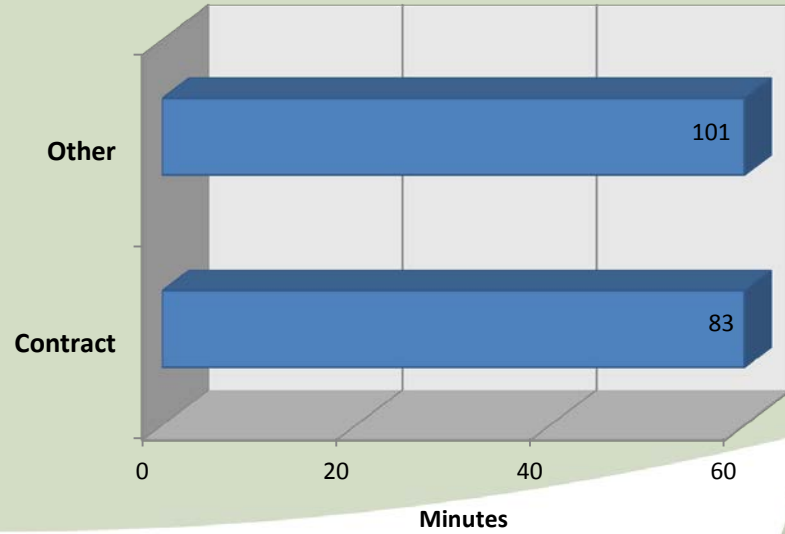
**Calls for Service by Hours Range  
Jefferson - December 2016**



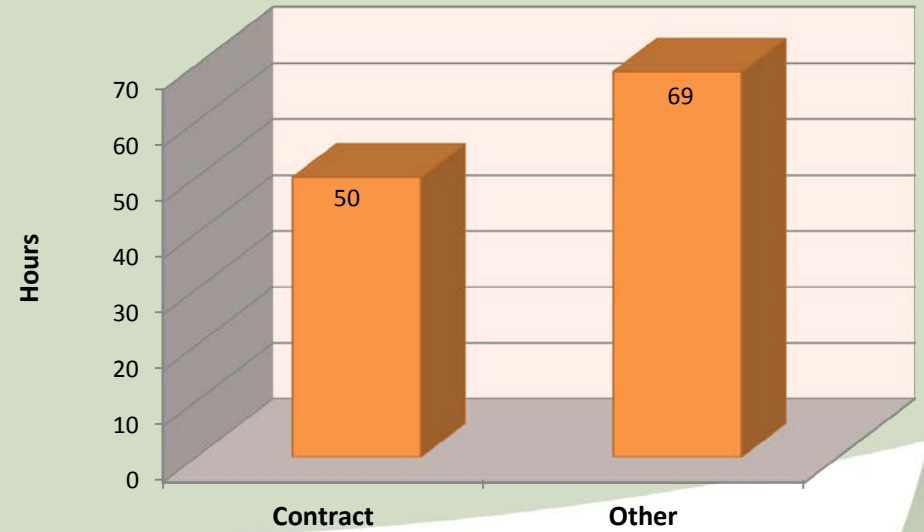
**Calls for Service by Day of Week  
Jefferson - December 2016**



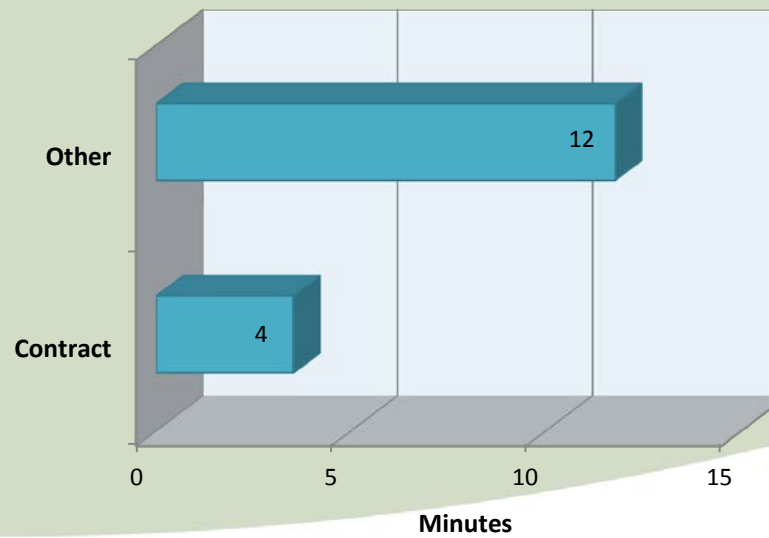
### Average Call Length Jefferson - December 2016



### Total Call Length Jefferson - December 2016

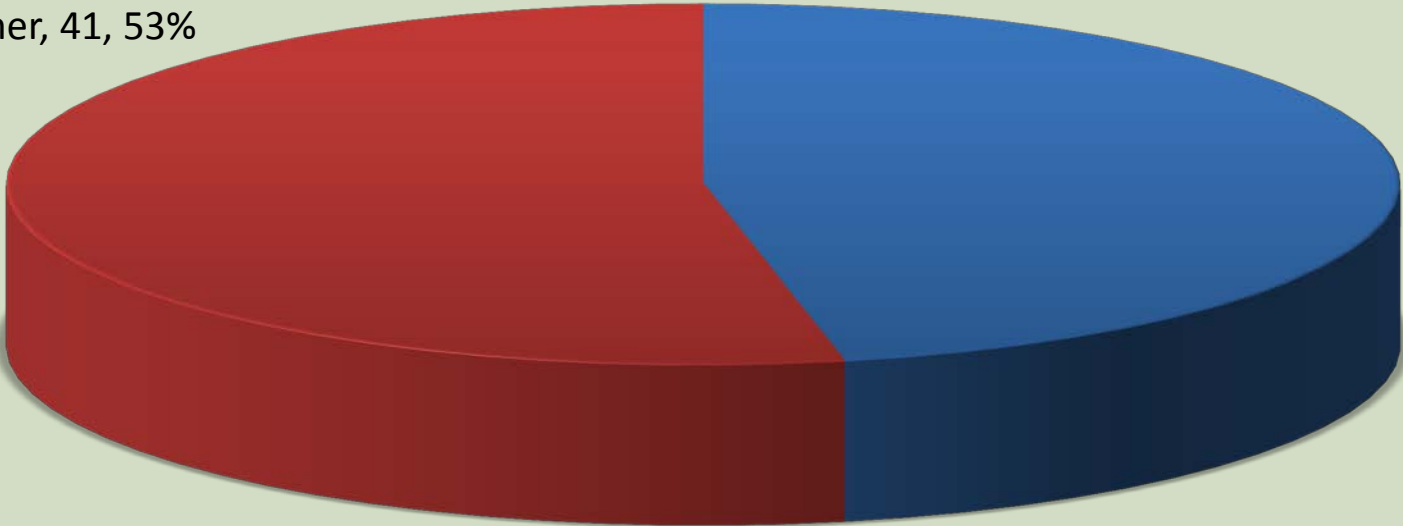


### Average Call Arrival Time Jefferson - December 2016



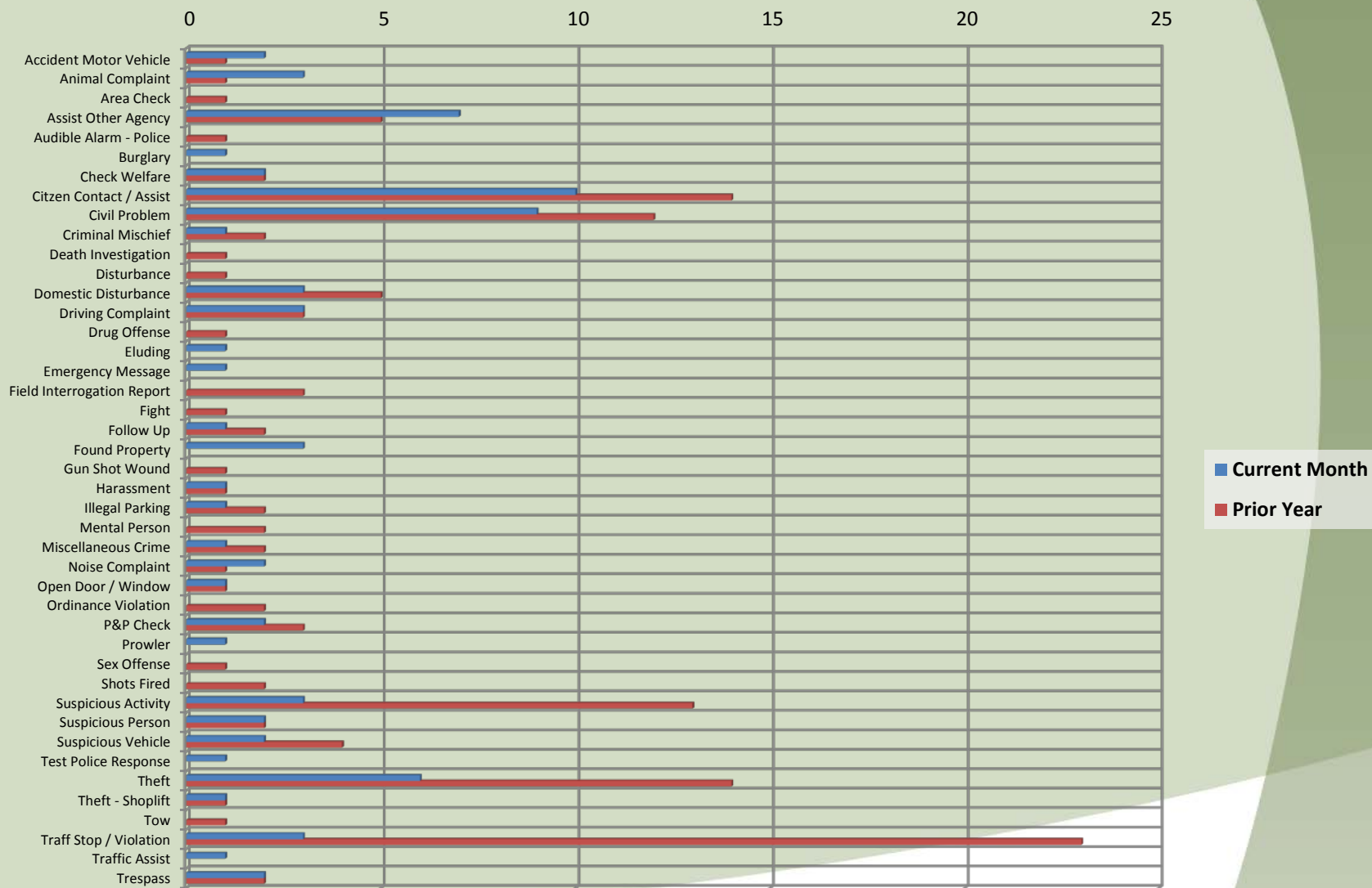
**City of Jefferson  
Calls by Primary Deputy  
December 2016**

■ Other, 41, 53%



■ Contract, 36, 47%

# City of Jefferson December 2015 vs December 2016



Total Calls

