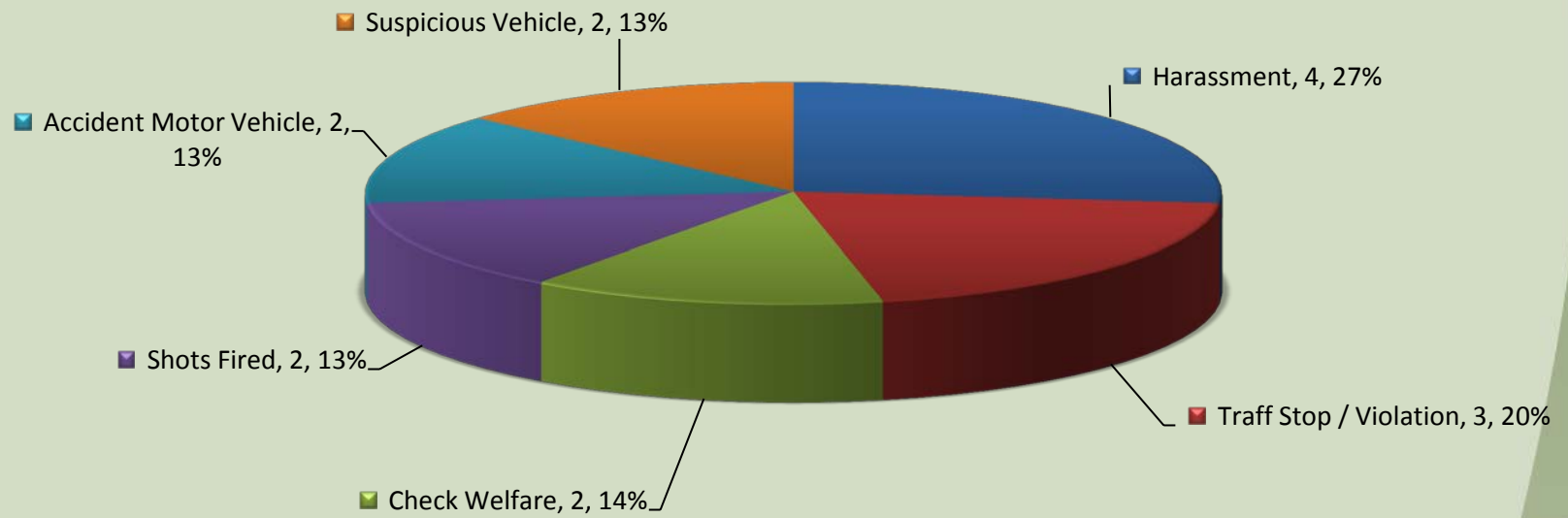
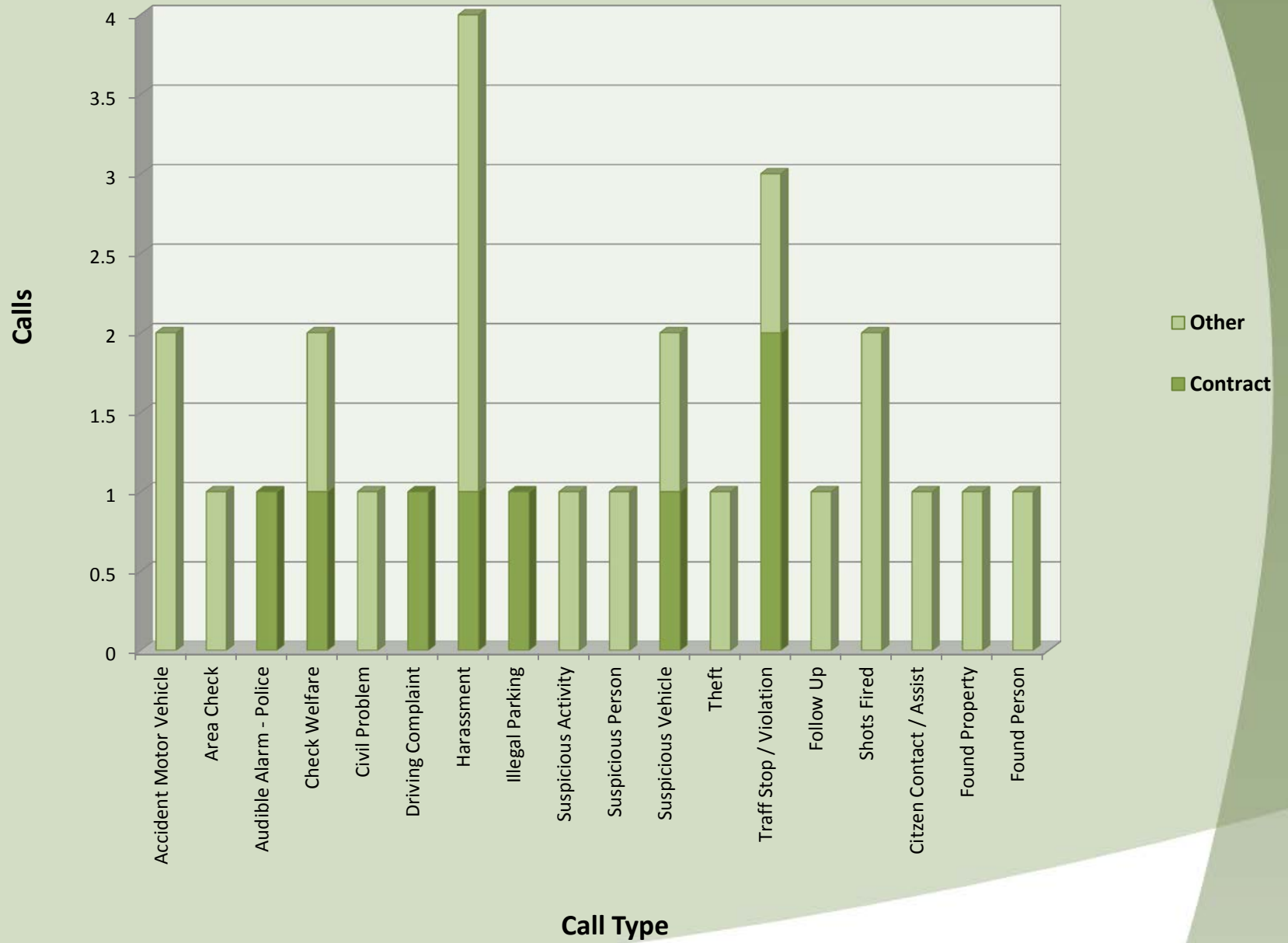


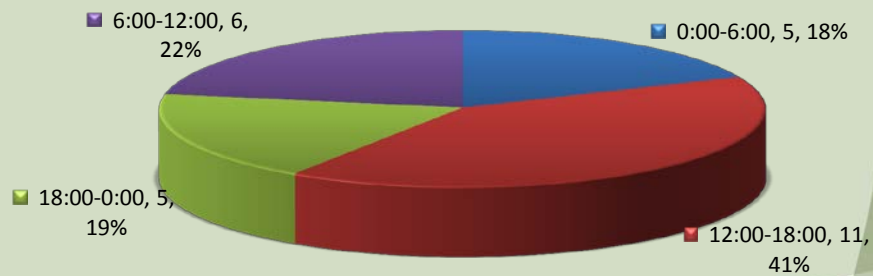
# City of Sublimity Top Calls for Service December 2015



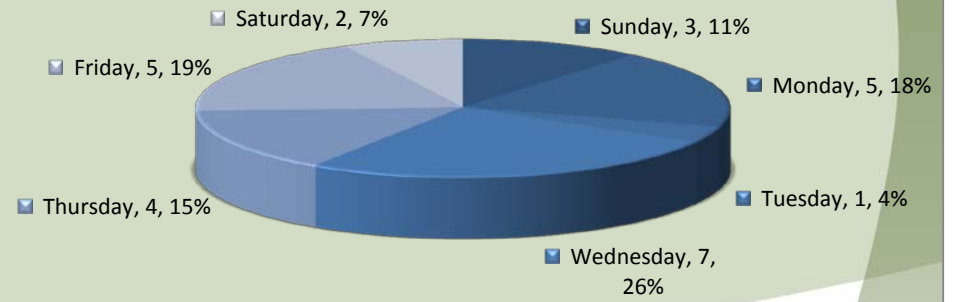
# Call Type by Primary Deputy Sublimity - December 2015



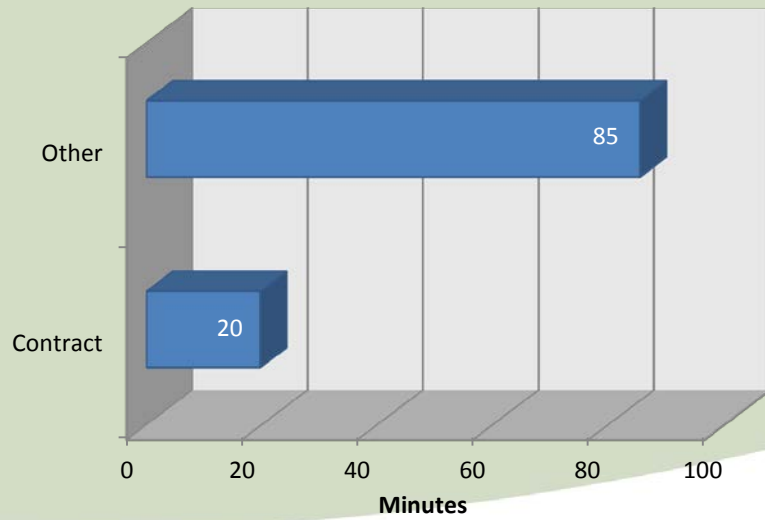
**Calls for Service by Hours Range  
Sublimity - December 2015**



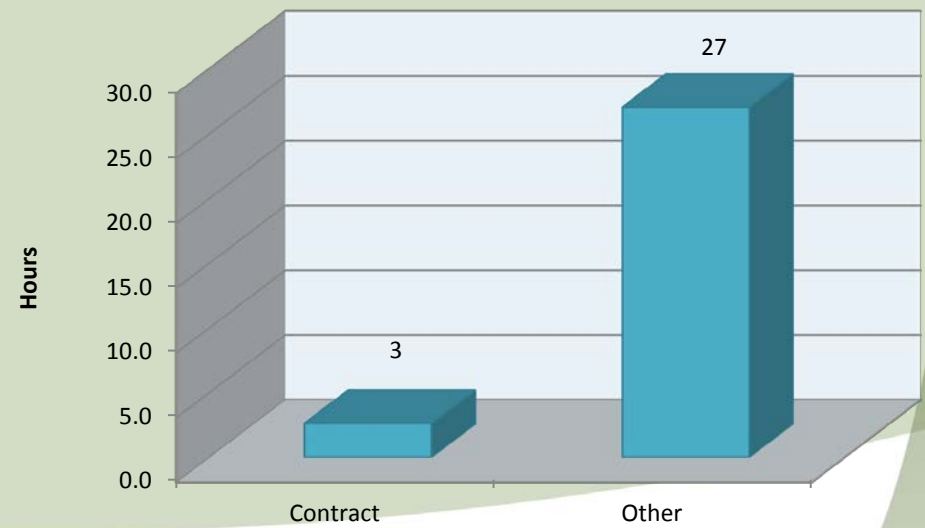
**Calls for Service by Day of Week  
Sublimity - December 2015**



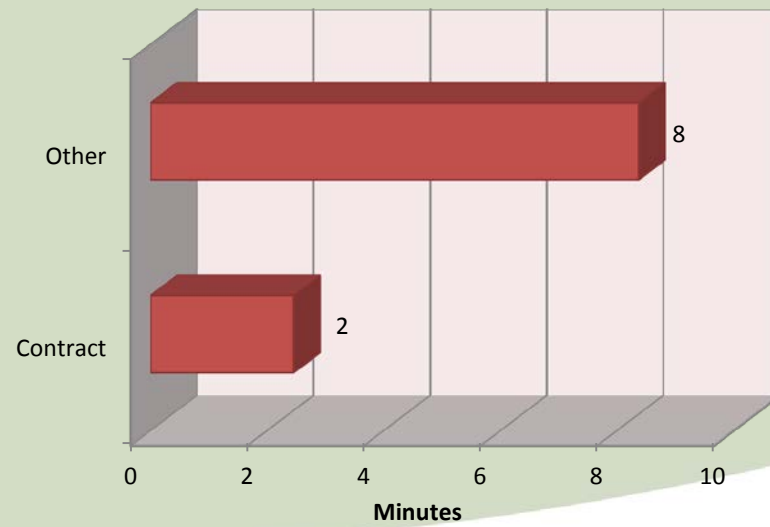
### Average Call Length Sublimity - December 2015



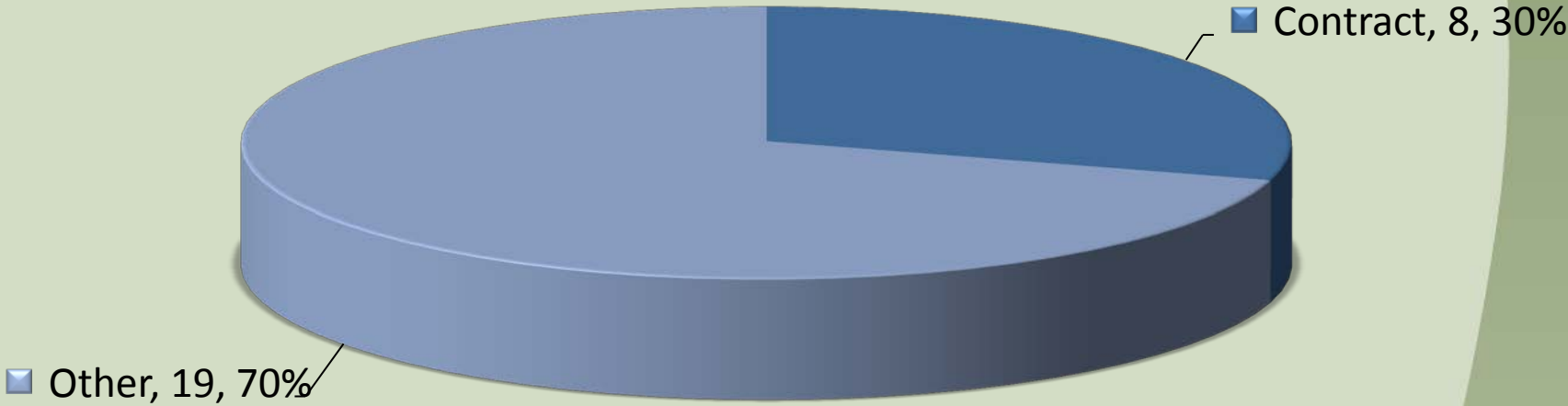
### Total Call Length Sublimity - December 2015



### Average Call Arrival Time Sublimity - December 2015



**City of Sublimity  
Calls by Primary Deputy  
December 2015**



## City of Sublimity December 2014 vs December 2015



Number of Calls

EVENTID	Combined Type	PRIMARY UNIT	DISPATCH DATE	CLEARED DATE	Arrival in Minutes	Call Length in Minutes	LOCATION	Day of Week	Time of Day	Hour Range	Deputy
SMS201512020020	Suspicious Vehicle	A114	12/2/2015 7:05	12/2/2015 7:27	0.00	21.52	555 NE OVERLOOK WY (MapBook:4230)	Wednesday	7:05	6:00-12:00	Contract
SMS201512020024	Illegal Parking	A114	12/2/2015 7:40	12/2/2015 7:48	0.00	7.87	189 NE STARR ST (MapBook:4230), SUB	Wednesday	7:40	6:00-12:00	Contract
SMS201512020027	Traffic Stop / Violation	A114	12/2/2015 7:59	12/2/2015 8:30	0.02	30.93	400 N CENTER ST SE (MapBook:4230), S	Wednesday	7:59	6:00-12:00	Contract
SMS201512030007	Suspicious Person	A104	12/3/2015 4:58	12/3/2015 5:50	10.33	41.18	500 SW SUBLIMITY BV (MapBook:4330)	Thursday	4:58	0:00-6:00	Other
SMS201512030137	Found Person	A163	12/3/2015 15:13	12/3/2015 16:57	8.02	95.48	695 NE BERRY ST SE (MapBook:4230), S	Thursday	15:13	12:00-18:00	Other
SMS201512040002	Harassment	A104	12/4/2015 1:15	12/4/2015 3:19		124.27	712 SW 8TH ST (MapBook:4230), SUBLI	Friday	0:00	0:00-6:00	Other
SMS201512050108	Suspicious Activity	A183	12/5/2015 23:14	12/6/2015 2:55	14.68	205.73	115 NW PARKER ST (MapBook:4230), S	Saturday	23:14	18:00-0:00	Other
SMS201512070108	Harassment	A114	12/7/2015 14:42	12/7/2015 15:21	6.05	32.47	326 SW DIVISION ST (MapBook:4230), S	Monday	14:42	12:00-18:00	Contract
SMS201512070136	Civil Problem	A167	12/7/2015 16:00	12/7/2015 16:14	0.02	13.17	516 SW 9TH ST (MapBook:4330), SUBLI	Monday	16:00	12:00-18:00	Other
SMS201512090129	Driving Complaint	A114	12/9/2015 14:13	12/9/2015 14:27	1.72	11.67	N CENTER ST, SUBLIMITY/NE STARR ST,	Wednesday	14:13	12:00-18:00	Contract
SMS201512130035	Theft	A195	12/13/2015 15:36	12/13/2015 18:59	17.87	184.77	134 SE DIVISION ST (MapBook:4230), S	Sunday	15:36	12:00-18:00	Other
SMS201512140220	Suspicious Vehicle	A183	12/14/2015 23:40	12/15/2015 0:32	12.02	39.42	183 NE STARR ST (MapBook:4230), SUB	Monday	23:40	18:00-0:00	Other
SMS201512150164	Check Welfare	A032	12/15/2015 19:06	12/16/2015 0:09	18.68	284.40	340 NE CREST ST (MapBook:4230), SUB	Tuesday	19:06	18:00-0:00	Other
SMS201512160002	Area Check	A104	12/16/2015 1:33	12/16/2015 2:19	0.00	45.43	189 NE STARR ST (MapBook:4230), SUB	Wednesday	1:33	0:00-6:00	Other
SMS201512170072	Follow Up	A102	12/17/2015 10:59	12/17/2015 11:28	0.02	29.67	350 NW 5TH ST (MapBook:4230), SUBLI	Thursday	10:59	6:00-12:00	Other
SMS201512180080	Check Welfare	A114	12/18/2015 11:54	12/18/2015 12:30	5.42	31.13	300 SW SUBLIMITY BV (MapBook:4330)	Friday	11:54	6:00-12:00	Contract
SMS201512180093	Audible Alarm - Polic	A114	12/18/2015 13:16	12/18/2015 13:34	6.37	11.52	722 SE CONIFER CT (MapBook:4230), @	Friday	13:16	12:00-18:00	Contract
SMS201512190107	Accident Motor Vehi	A140	12/19/2015 20:25	12/19/2015 22:17	23.05	89.28	CASCADE HW SE, SUBLIMITY/SW SUBLI	Saturday	20:25	18:00-0:00	Other
SMS201512200085	Harassment	A112	12/20/2015 21:46	12/20/2015 22:37		51.05	185 NE STARR ST (MapBook:4230), SUB	Sunday	0:00	0:00-6:00	Other
SMS201512210042	Traffic Stop / Violation	A114	12/21/2015 10:56	12/21/2015 11:07	0.02	10.37	300 N CENTER ST (MapBook:4230), SUB	Monday	10:56	6:00-12:00	Contract
SMS201512240060	Found Property	A013	12/24/2015 13:08	12/24/2015 13:20	0.00	12.15	211 NW STARR ST (MapBook:4230), @L	Thursday	13:08	12:00-18:00	Other
SMS201512250058	Shots Fired	A032	12/25/2015 17:22	12/25/2015 18:49	7.12	79.42	SW 9TH ST/SW FOXHILL AV(MapBook:4	Friday	17:22	12:00-18:00	Other
SMS201512250070	Accident Motor Vehi	A141	12/25/2015 19:46	12/25/2015 23:35	17.50	211.03	356 NW STARR ST (MapBook:4230), SU	Friday	19:46	18:00-0:00	Other
SMS201512270011	Shots Fired	A183	12/27/2015 2:38	12/27/2015 3:10	4.47	27.53	482 S CENTER ST (MapBook:4230), SUB	Sunday	2:38	0:00-6:00	Other
SMS201512280126	Harassment	A134	12/28/2015 14:43	12/28/2015 15:32	8.43	40.25	482 S CENTER ST (MapBook:4230), SUB	Monday	14:43	12:00-18:00	Other
SMS201512300172	Traffic Stop / Violation	A113	12/30/2015 14:41	12/30/2015 14:51	0.00	10.62	NE STARR ST, SUBLIMITY/N CENTER ST,	Wednesday	14:41	12:00-18:00	Other
SMS201512300199	Citizen Contact / Assi	A154	12/30/2015 16:19	12/30/2015 16:58	0.00	38.85	340 NE CREST ST (MapBook:4230), SUB	Wednesday	16:19	12:00-18:00	Other