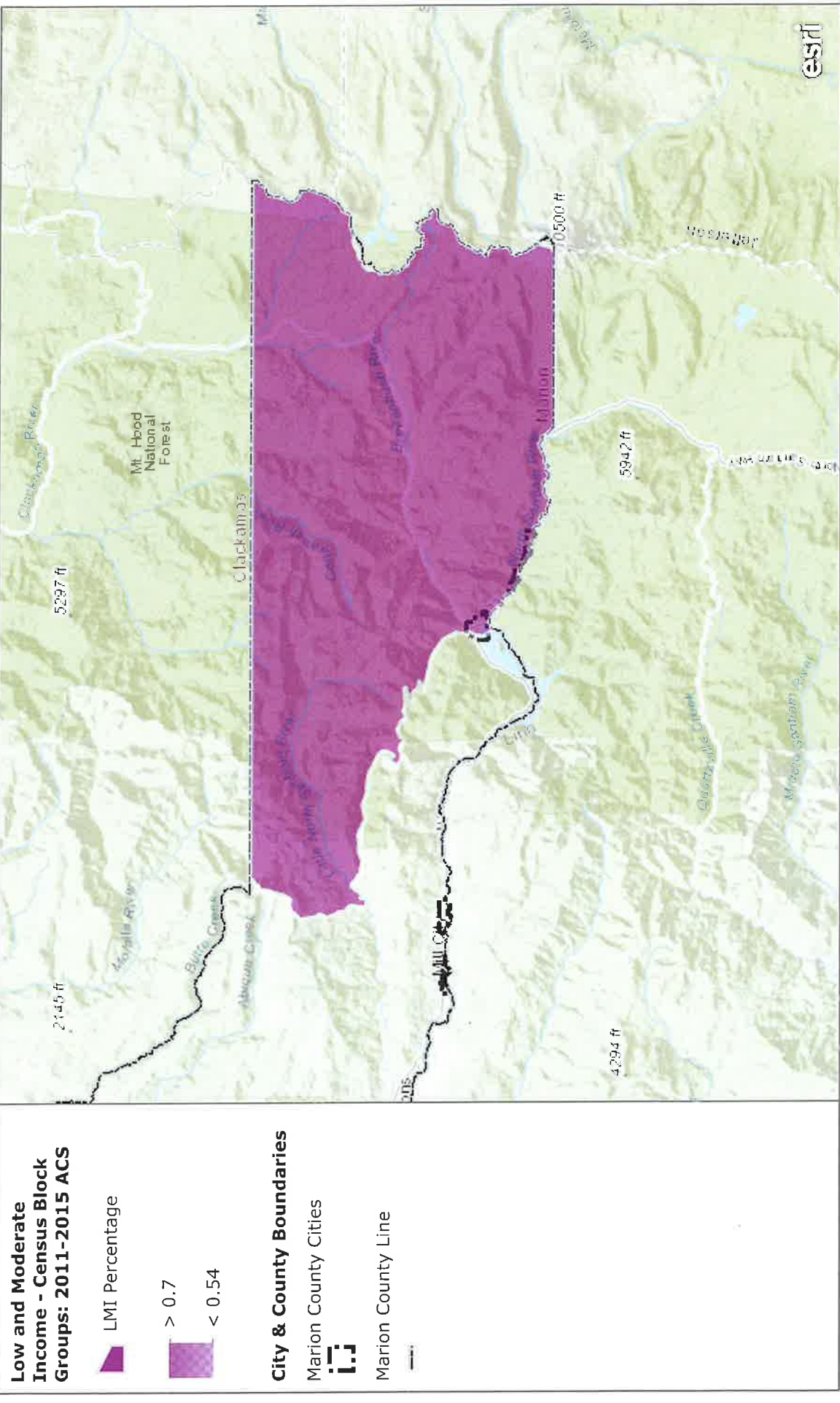


CDBGUOIGID	CDBGNAME	STUSAB	CDBGTY	STATE	COUNTY	COUNTYNAME	TRACT	BLKGRP	LOWMOD	LOWMODUNIV	LOWMODPCT	LOWMODI	GEOID
419047	Marion County	OR	61	41	047	Marion County	001602	2	1245	1480	84%	+/-40.88	15000US410470016022
419047	Marion County	OR	61	41	047	Marion County	010304	3	875	1055	83%	+/-43.22	15000US410470103043
419047	Marion County	OR	61	41	047	Marion County	000400	2	1655	2000	83%	+/-20.70	15000US410470004002
419047	Marion County	OR	61	41	047	Marion County	001602	5	1575	1930	82%	+/-31.04	15000US410470016025
419047	Marion County	OR	61	41	047	Marion County	010306	2	2110	2840	74%	+/-23.87	15000US410470103062
419047	Marion County	OR	61	41	047	Marion County	010306	3	610	875	70%	+/-56.00	15000US410470103063
419047	Marion County	OR	61	41	047	Marion County	010305	2	745	1080	69%	+/-36.39	15000US410470103052
419047	Marion County	OR	61	41	047	Marion County	001604	4	1055	1545	68%	+/-23.75	15000US410470016044
419047	Marion County	OR	61	41	047	Marion County	001503	2	1285	1885	68%	+/-17.19	15000US410470015032
419047	Marion County	OR	61	41	047	Marion County	010306	1	2040	3015	68%	+/-25.07	15000US410470103061
419047	Marion County	OR	61	41	047	Marion County	001602	1	1810	2765	65%	+/-23.44	15000US410470016021
419047	Marion County	OR	61	41	047	Marion County	010600	1	265	410	65%	+/-35.12	15000US410470106001
419047	Marion County	OR	61	41	047	Marion County	000400	1	1260	1975	64%	+/-18.33	15000US410470004001
419047	Marion County	OR	61	41	047	Marion County	010802	3	725	1140	64%	+/-21.14	15000US410470108023
419047	Marion County	OR	61	41	047	Marion County	001701	2	935	1485	63%	+/-32.32	15000US410470017012
419047	Marion County	OR	61	41	047	Marion County	002502	3	685	1090	63%	+/-20.92	15000US410470025023
419047	Marion County	OR	61	41	047	Marion County	001502	1	1470	2345	63%	+/-19.40	15000US410470015021
419047	Marion County	OR	61	41	047	Marion County	001802	5	1270	2035	62%	+/-34.45	15000US410470018025
419047	Marion County	OR	61	41	047	Marion County	001801	4	1170	1875	62%	+/-27.25	15000US410470018014
419047	Marion County	OR	61	41	047	Marion County	001702	3	1275	2050	62%	+/-19.22	15000US410470017023
419047	Marion County	OR	61	41	047	Marion County	001601	3	1500	2415	62%	+/-20.70	15000US410470016013
419047	Marion County	OR	61	41	047	Marion County	010305	1	1130	1845	61%	+/-23.04	15000US410470103051
419047	Marion County	OR	61	41	047	Marion County	010304	2	1895	3240	58%	+/-19.04	15000US410470103042
419047	Marion County	OR	61	41	047	Marion County	001502	2	1180	2025	58%	+/-19.11	15000US410470015022
419047	Marion County	OR	61	41	047	Marion County	001604	2	950	1635	58%	+/-36.64	15000US410470016042
419047	Marion County	OR	61	41	047	Marion County	001703	3	1200	2120	57%	+/-17.97	15000US410470017033
419047	Marion County	OR	61	41	047	Marion County	001802	1	715	1265	57%	+/-39.13	15000US410470018021
419047	Marion County	OR	61	41	047	Marion County	010304	4	755	1365	55%	+/-36.19	15000US410470103044
419047	Marion County	OR	61	41	047	Marion County	010304	1	500	925	54%	+/-26.05	15000US410470103041
419047	Marion County	OR	61	41	047	Marion County	001802	4	1150	2150	53%	+/-23.49	15000US410470018024
419047	Marion County	OR	61	41	047	Marion County	001802	3	580	1085	53%	+/-55.21	15000US410470018023
419047	Marion County	OR	61	41	047	Marion County	001604	1	1270	2425	52%	+/-22.39	15000US410470016041
419047	Marion County	OR	61	41	047	Marion County	010701	4	1320	2545	52%	+/-22.40	15000US410470107014
419047	Marion County	OR	61	41	047	Marion County	001501	3	800	1550	52%	+/-14.65	15000US410470015013
419047	Marion County	OR	61	41	047	Marion County	010305	3	620	1205	51%	+/-24.48	15000US410470103053
419047	Marion County	OR	61	41	047	Marion County	002000	4	1530	2980	51%	+/-15.67	15000US410470020004

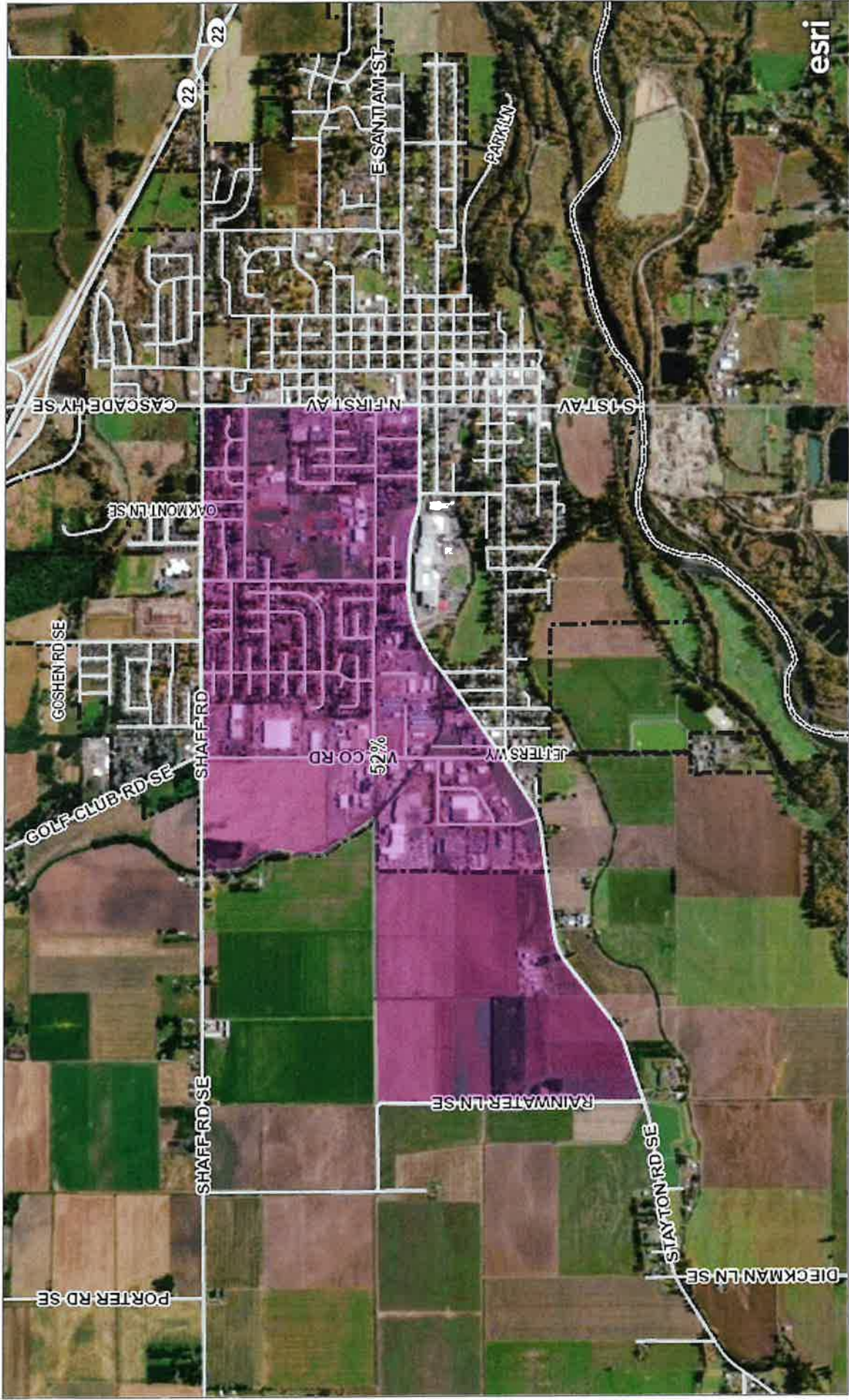
CDBG Low to Moderate Income - Census Block Groups Map



Web map for viewing Low Moderate Income Summary Data (LMISD) for Marion County, published by US Department of Housing and Urban Development

Esri Canada, Esri, HERE, Garmin, USGS, NGA, EPA, USDA, NPS | MC-ASR, MC-IT GIS | MC IT-GIS, MC PW | MC IT-GIS, MC Planning

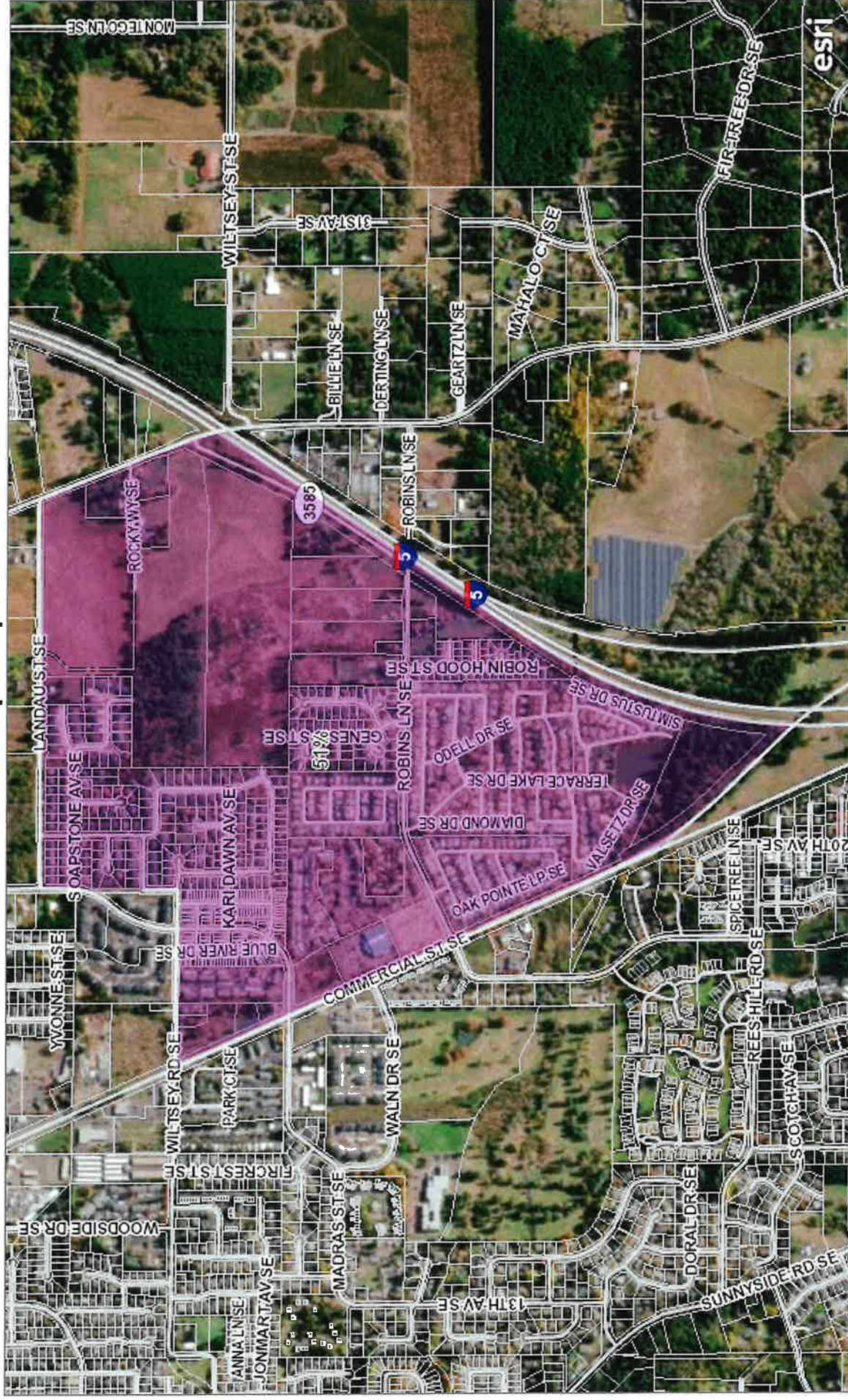
CDBG Low to Moderate Income - Census Block Groups Map



Web map for viewing Low Moderate Income Summary Data (LMISD) for Marion County, published by US Department of Housing and Urban Development

MC IT-GIS, MC Planning | MC-ASR, MC-IT GIS | MC IT-GIS, MC PW | Maxar

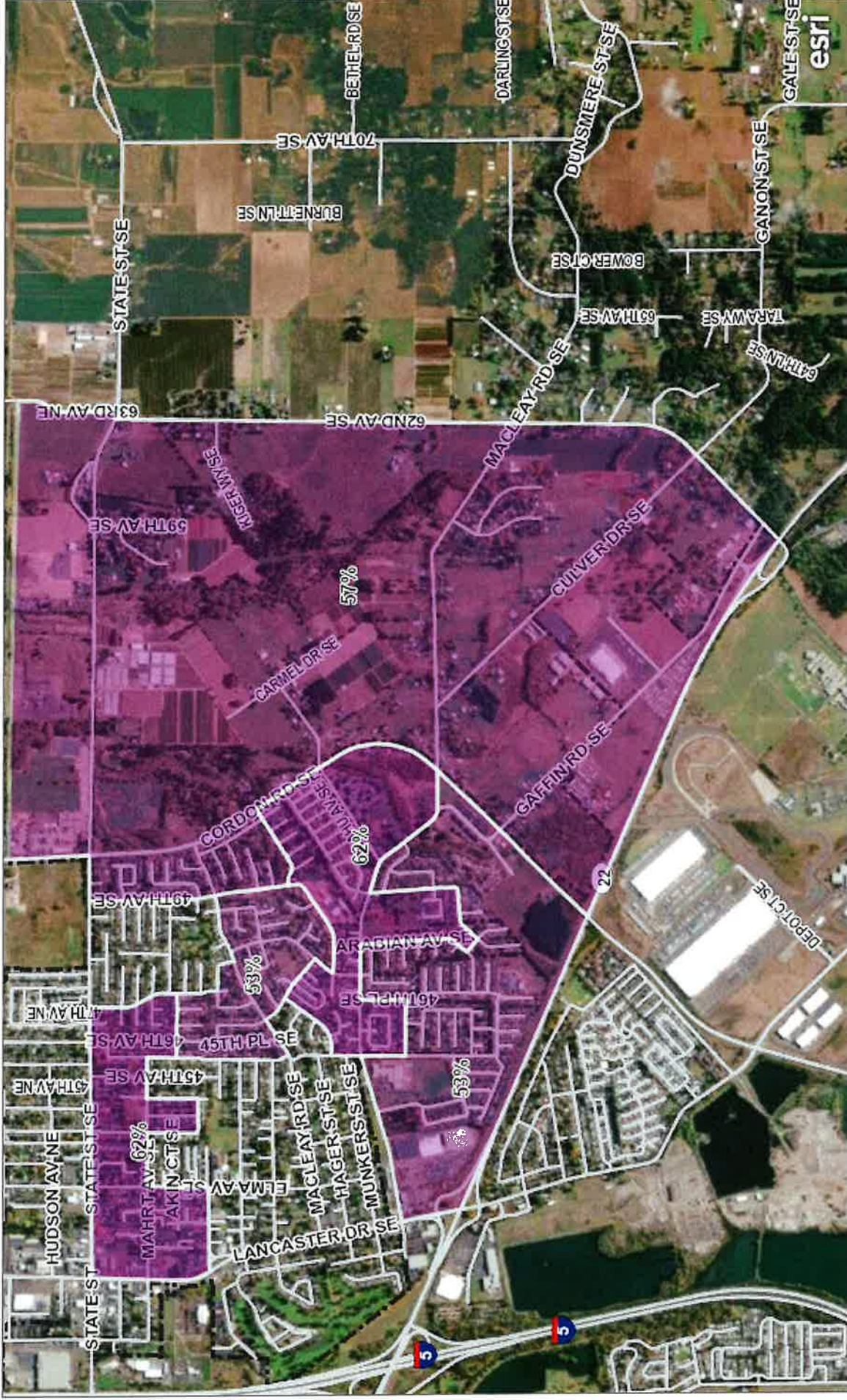
CDBG Low to Moderate Income - Census Block Groups Map



Web map for viewing Low Moderate Income Summary Data (LMISD) for Marion County, published by US Department of Housing and Urban Development

MC IT-GIS, MC Planning | MC-ASR, MC-IT GIS | MC IT-GIS, MC PW | Maxar

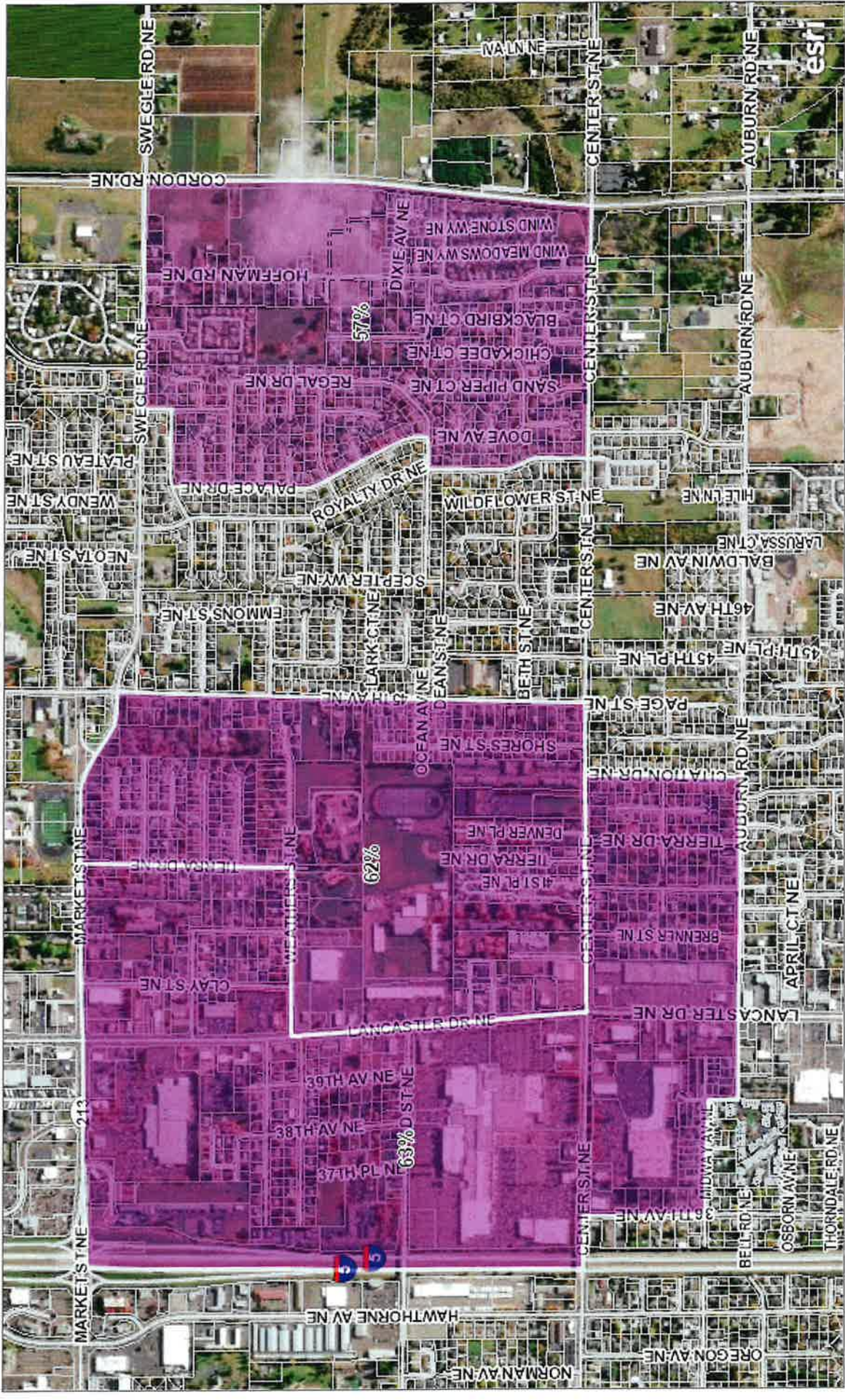
CDBG Low to Moderate Income - Census Block Groups Map



Web map for viewing Low Moderate Income Summary Data (LMISD) for Marion County, published by US Department of Housing and Urban Development

MC IT-GIS, MC Planning | MC-ASR, MC-IT GIS | MC IT-GIS, MC PW | Maxar

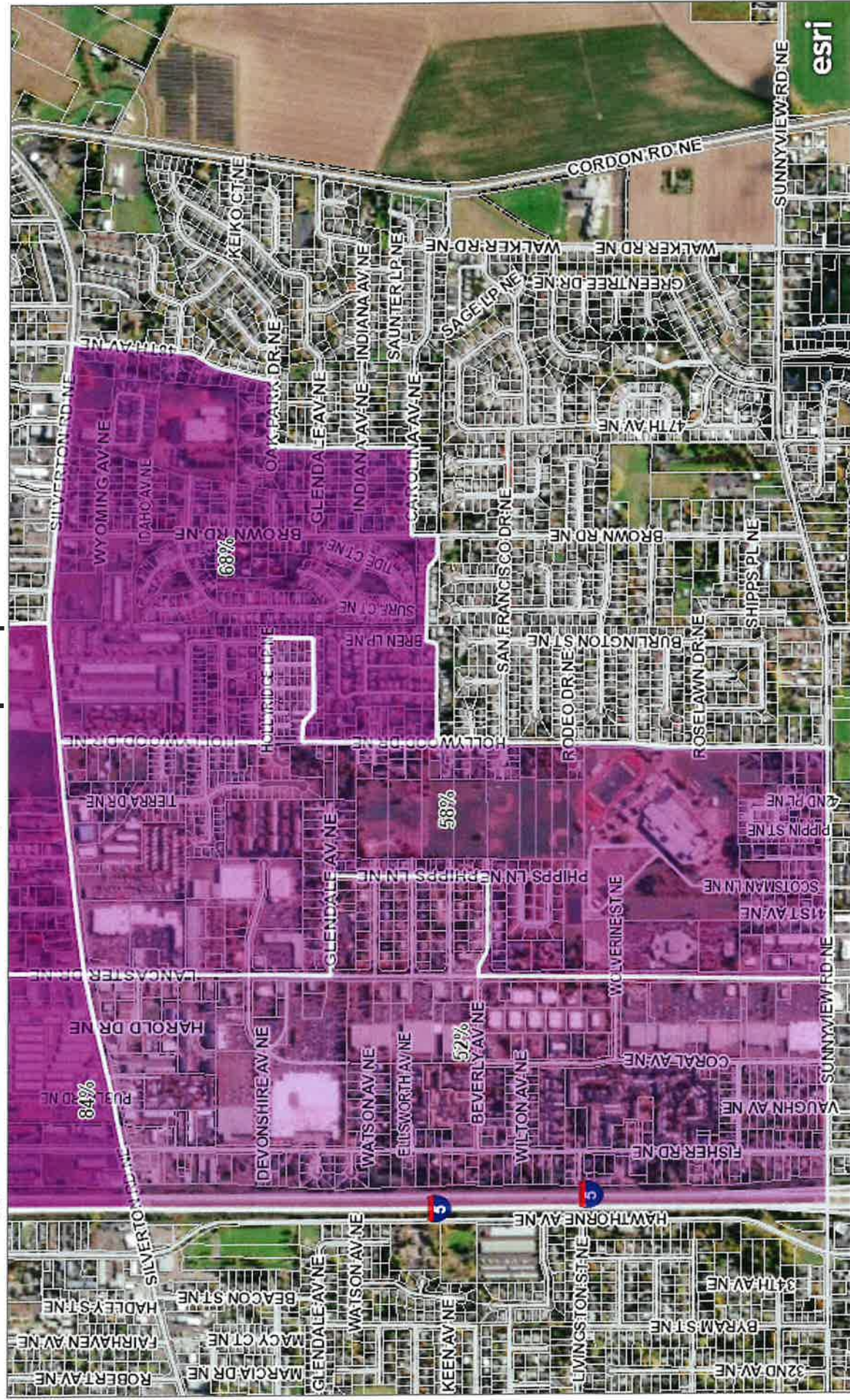
CDBG Low to Moderate Income - Census Block Groups Map



Web map for viewing Low Moderate Income Summary Data (LMISD) for Marion County, published by US Department of Housing and Urban Development

MC IT-GIS, MC Planning | MC-ASR, MC-IT GIS | MC IT-GIS, MC PW | Maxar

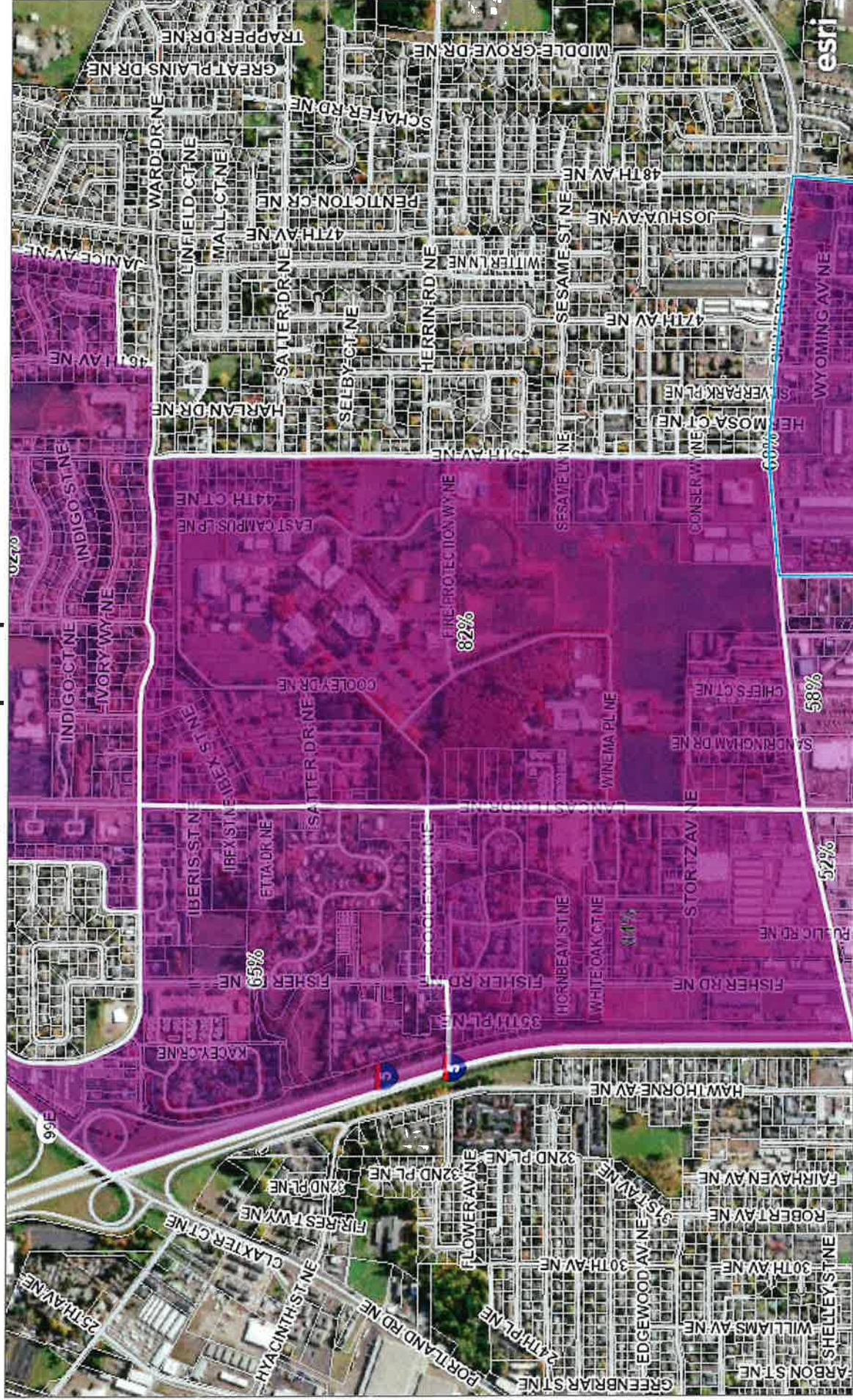
CDBG Low to Moderate Income - Census Block Groups Map



Web map for viewing Low Moderate Income Summary Data (LMISD) for Marion County, published by US Department of Housing and Urban Development

MC IT-GIS, MC Planning | MC-ASR, MC-IT GIS | MC IT-GIS, MC PW | Maxar

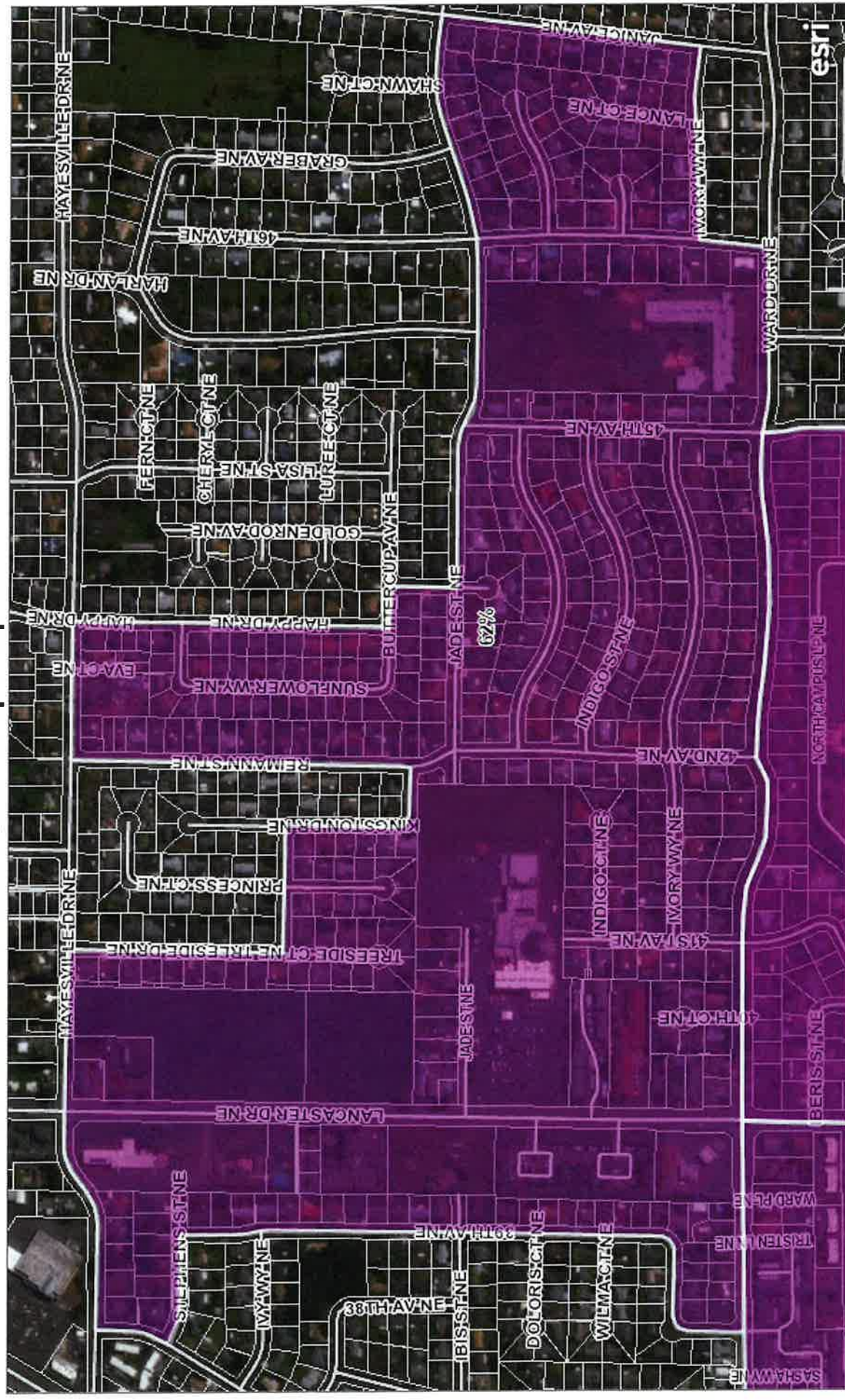
CDBG Low to Moderate Income - Census Block Groups Map



Web map for viewing Low Moderate Income Summary Data (LMISD) for Marion County, published by US Department of Housing and Urban Development

MC IT-GIS, MC Planning | MC-ASR, MC-IT GIS | MC IT-GIS, MC PW | Maxar

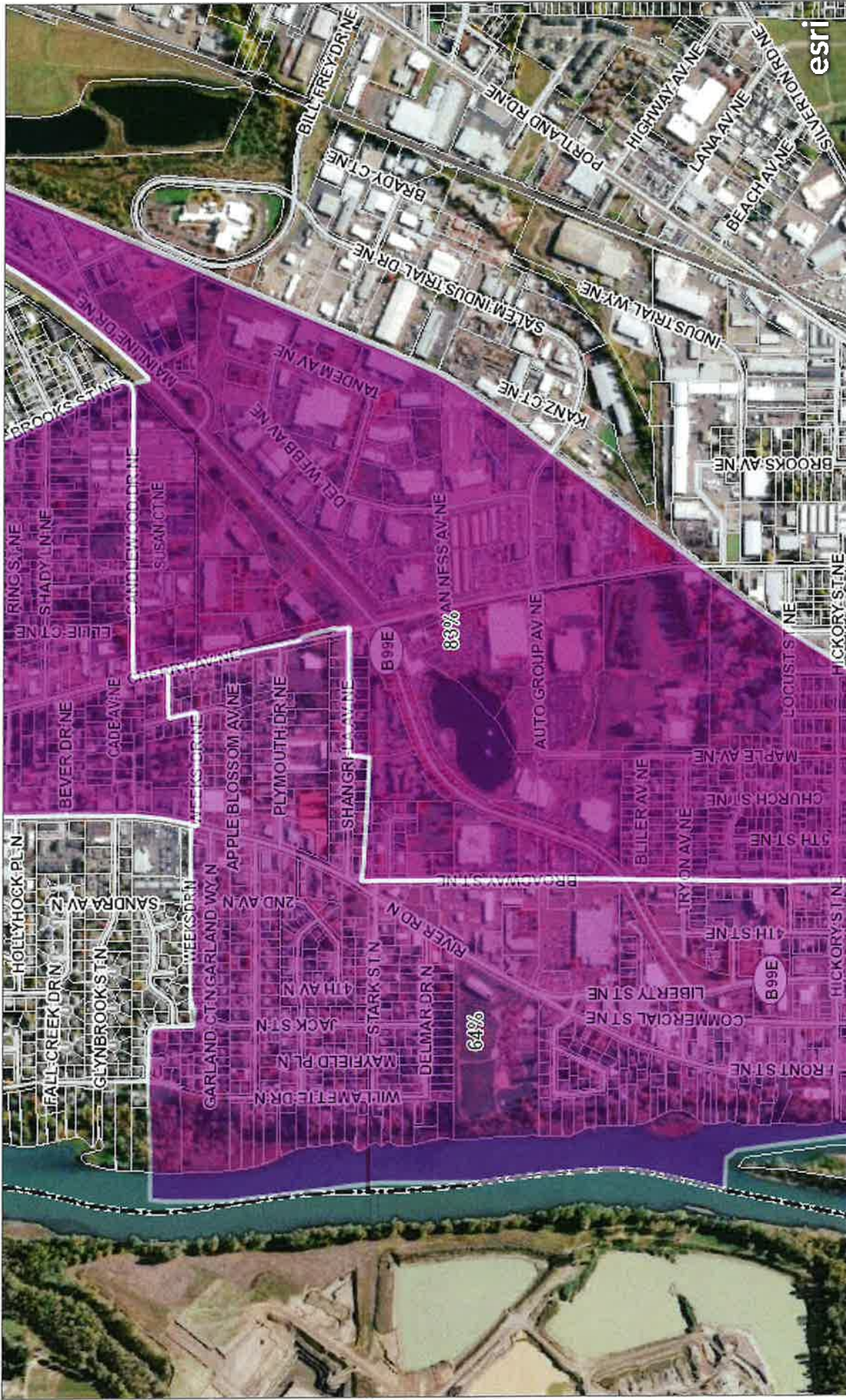
CDBG Low to Moderate Income - Census Block Groups Map



Web map for viewing Low Moderate Income Summary Data (LMISD) for Marion County, published by US Department of Housing and Urban Development

MC IT-GIS, MC Planning | MC-ASR, MC-IT GIS | MC IT-GIS, MC PW | Maxar

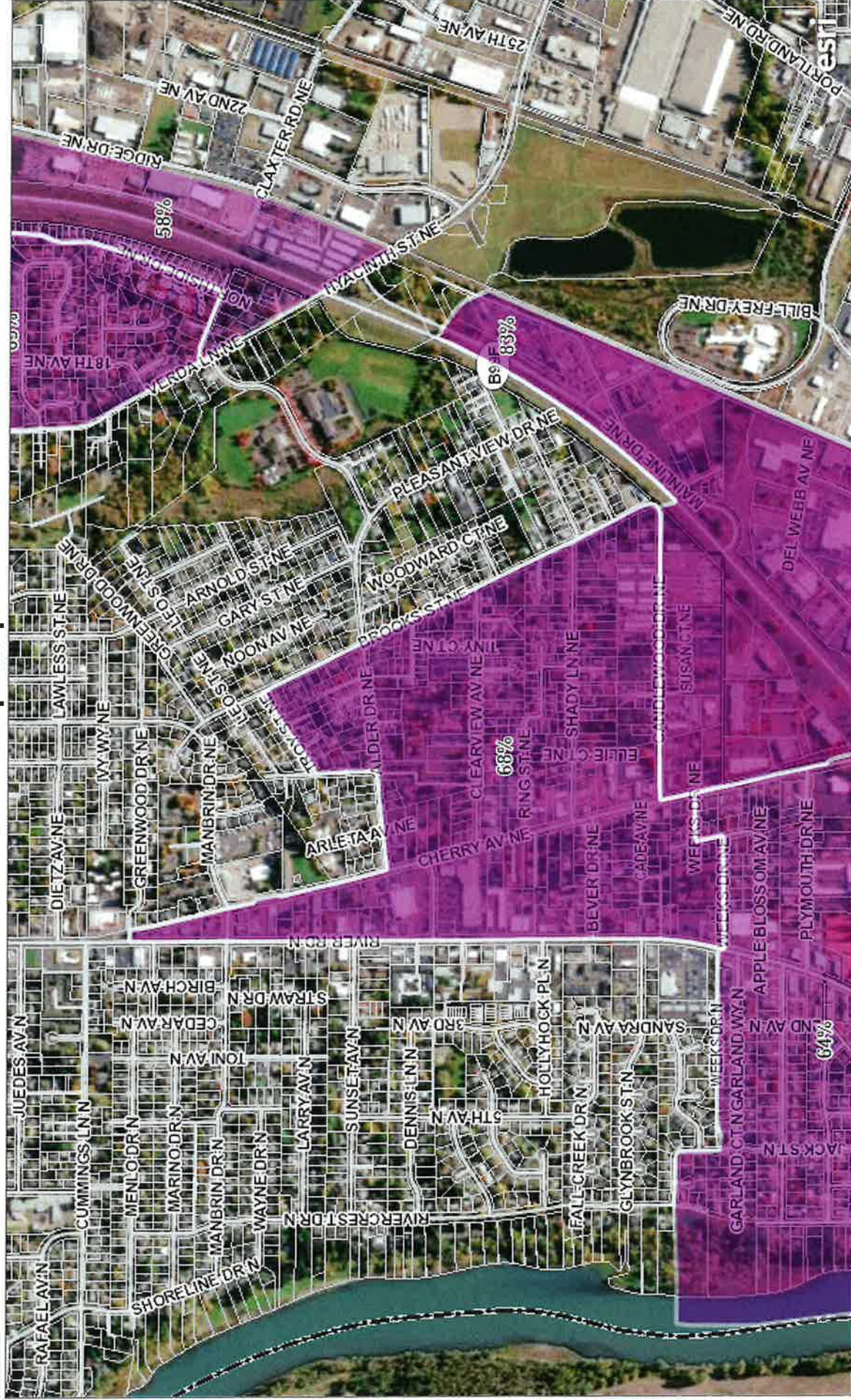
CDBG Low to Moderate Income - Census Block Groups Map



Web map for viewing Low Moderate Income Summary Data (LMISD) for Marion County, published by US Department of Housing and Urban Development

MC IT-GIS, MC Planning | MC-ASR, MC-IT GIS | MC IT-GIS, MC PW | Maxar

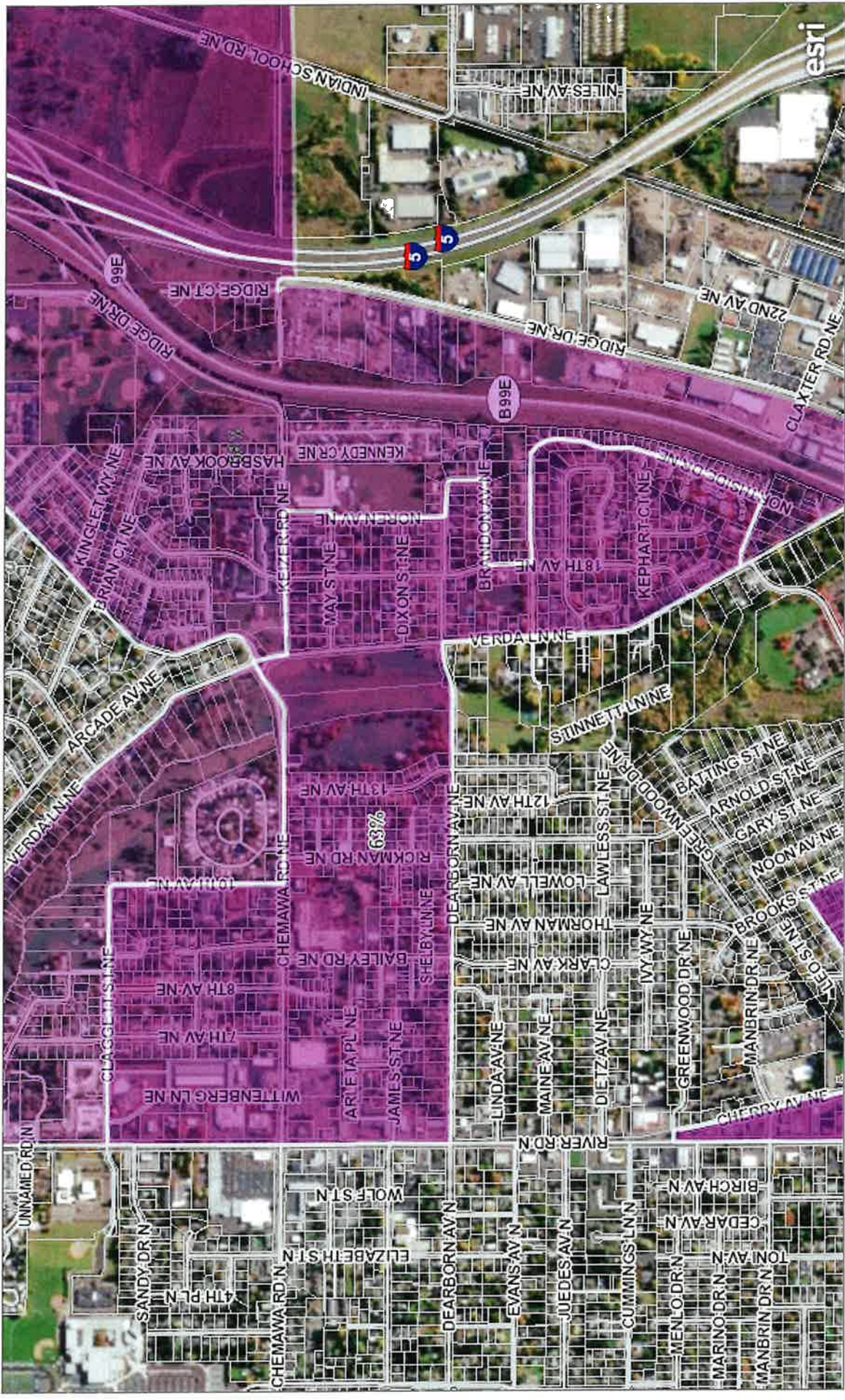
CDBG Low to Moderate Income - Census Block Groups Map



Web map for viewing Low Moderate Income Summary Data (LMISD) for Marion County, published by US Department of Housing and Urban Development

MC IT-GIS, MC Planning | MC-ASR, MC-IT GIS | MC IT-GIS, MC PW | Maxar

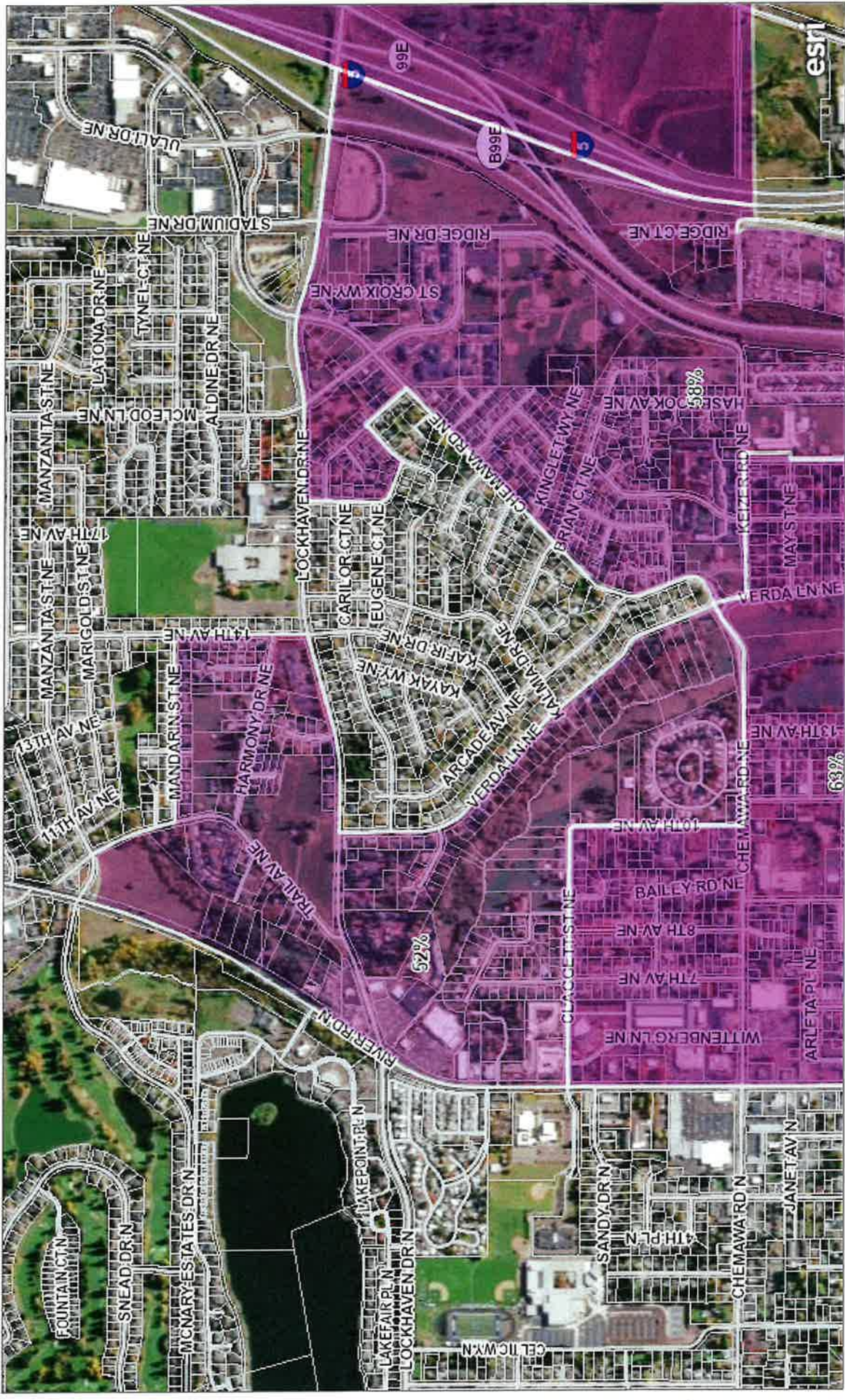
CDBG Low to Moderate Income - Census Block Groups Map



Web map for viewing Low Moderate Income Summary Data (LMI5D) for Marion County, published by US Department of Housing and Urban Development

MC IT-GIS, MC Planning | MC-ASR, MC-IT GIS | MC IT-GIS, MC PW | Maxar

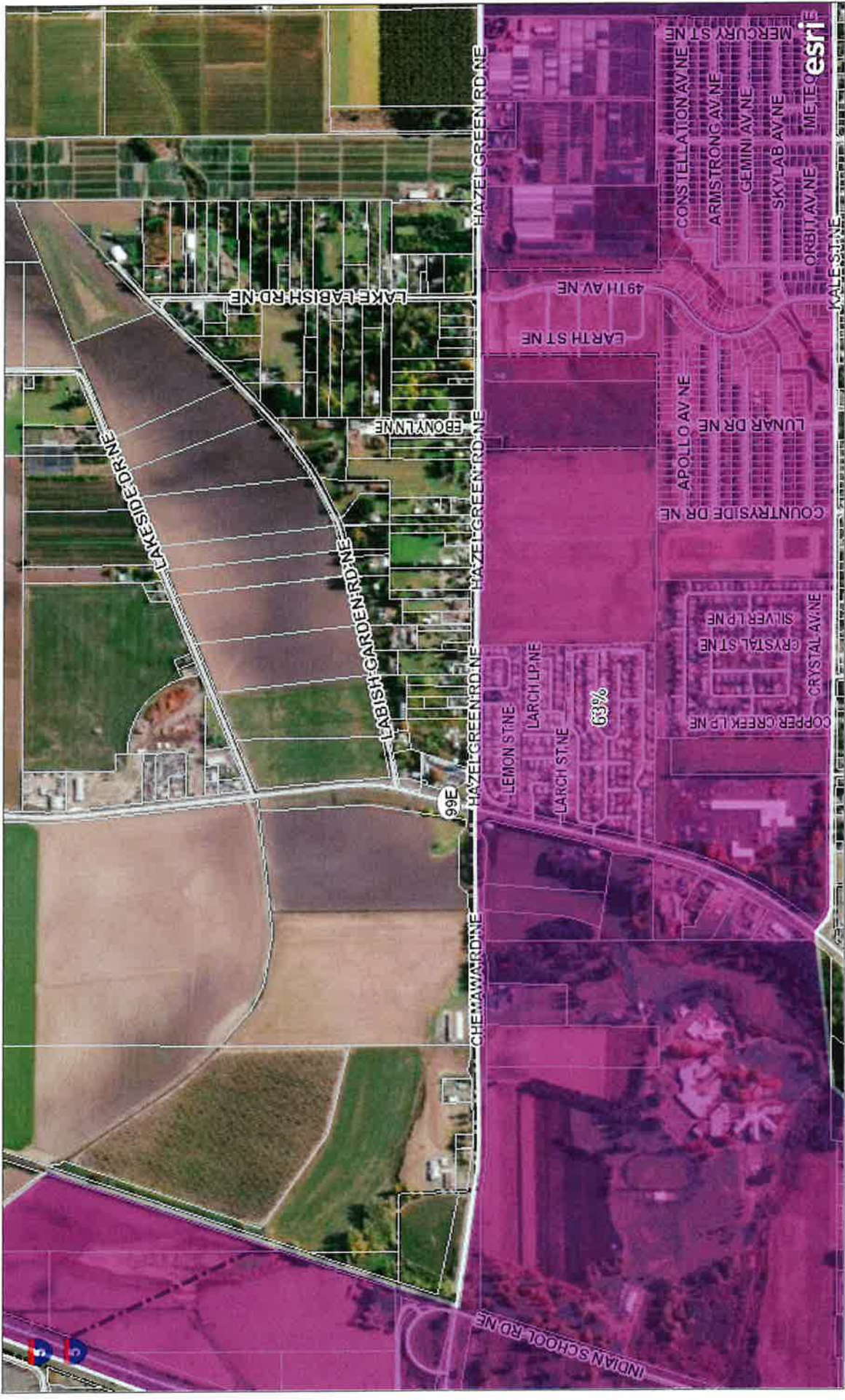
CDBG Low to Moderate Income - Census Block Groups Map



Web map for viewing Low Moderate Income Summary Data (LMISD) for Marion County, published by US Department of Housing and Urban Development

MC IT-GIS, MC Planning | MC-ASR, MC-IT GIS | MC IT-GIS, MC PW | Maxar

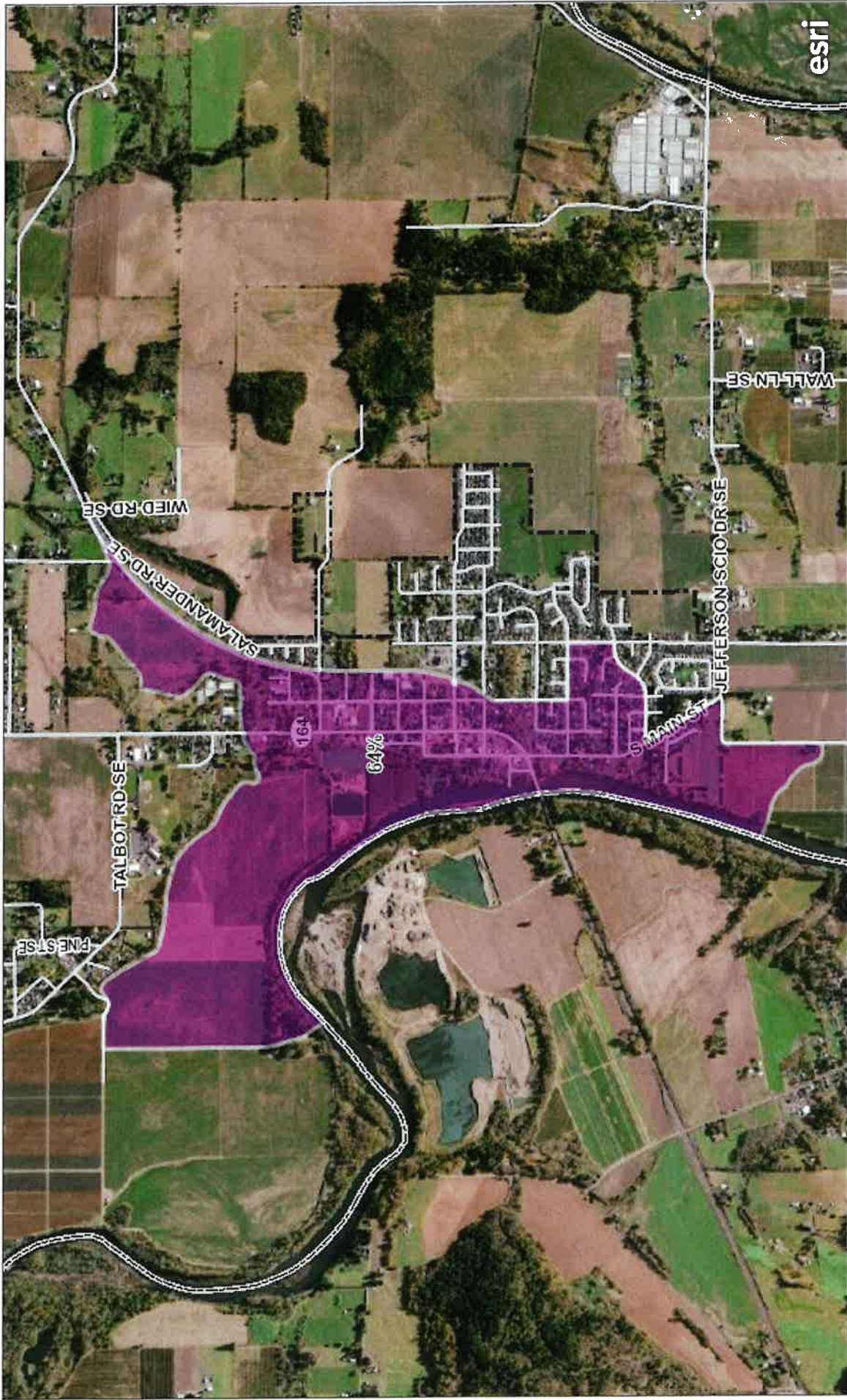
CDBG Low to Moderate Income - Census Block Groups Map



Web map for viewing Low Moderate Income Summary Data (LMISD) for Marion County, published by US Department of Housing and Urban Development

MC IT-GIS, MC Planning | MC-ASR, MC-IT GIS | MC IT-GIS, MC PW | Maxar

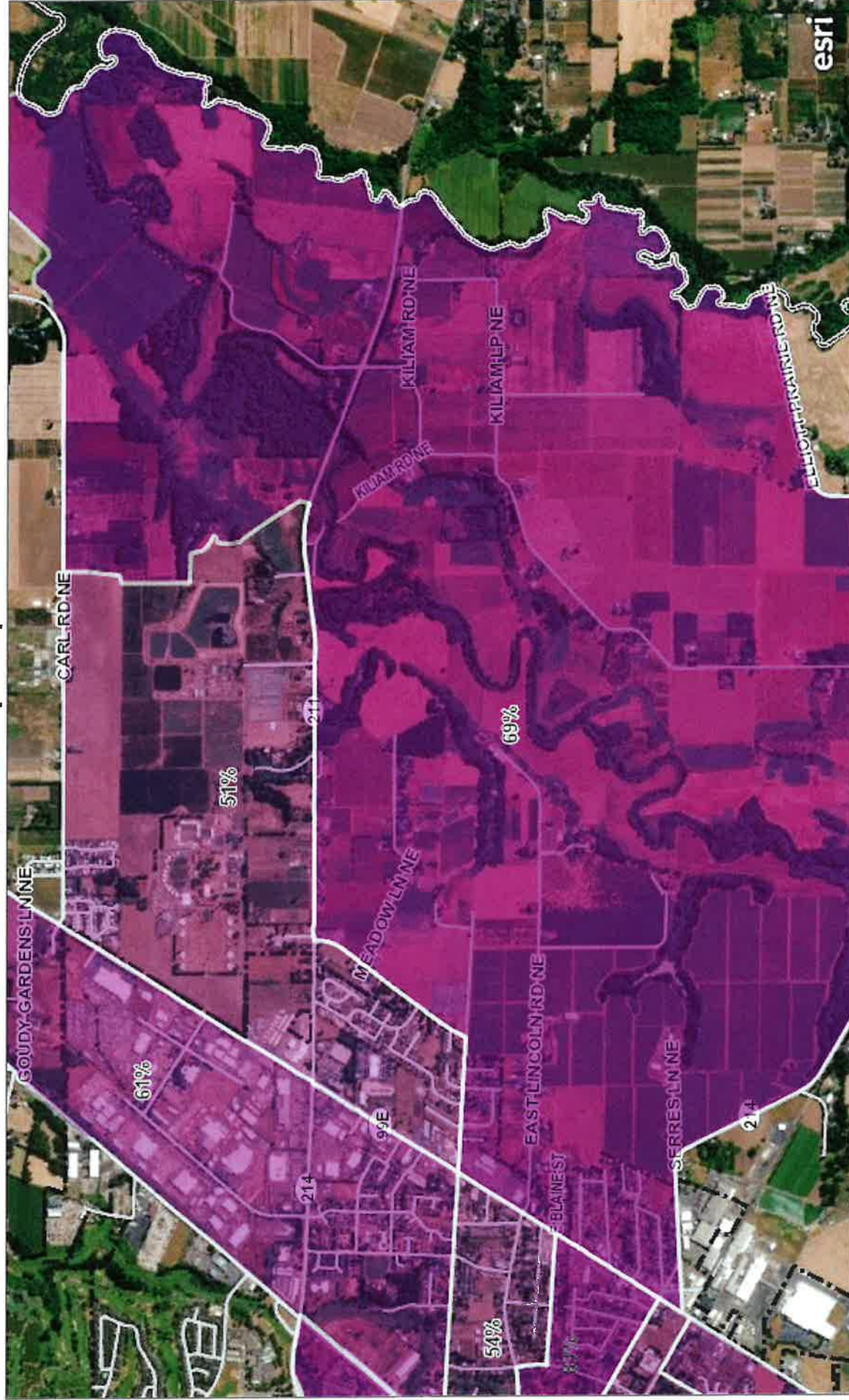
CDBG Low to Moderate Income - Census Block Groups Map



Web map for viewing Low Moderate Income Summary Data (LMISD) for Marion County, published by US Department of Housing and Urban Development

MC IT-GIS, MC Planning | MC-ASR, MC-IT GIS | MC IT-GIS, MC PW | Maxar

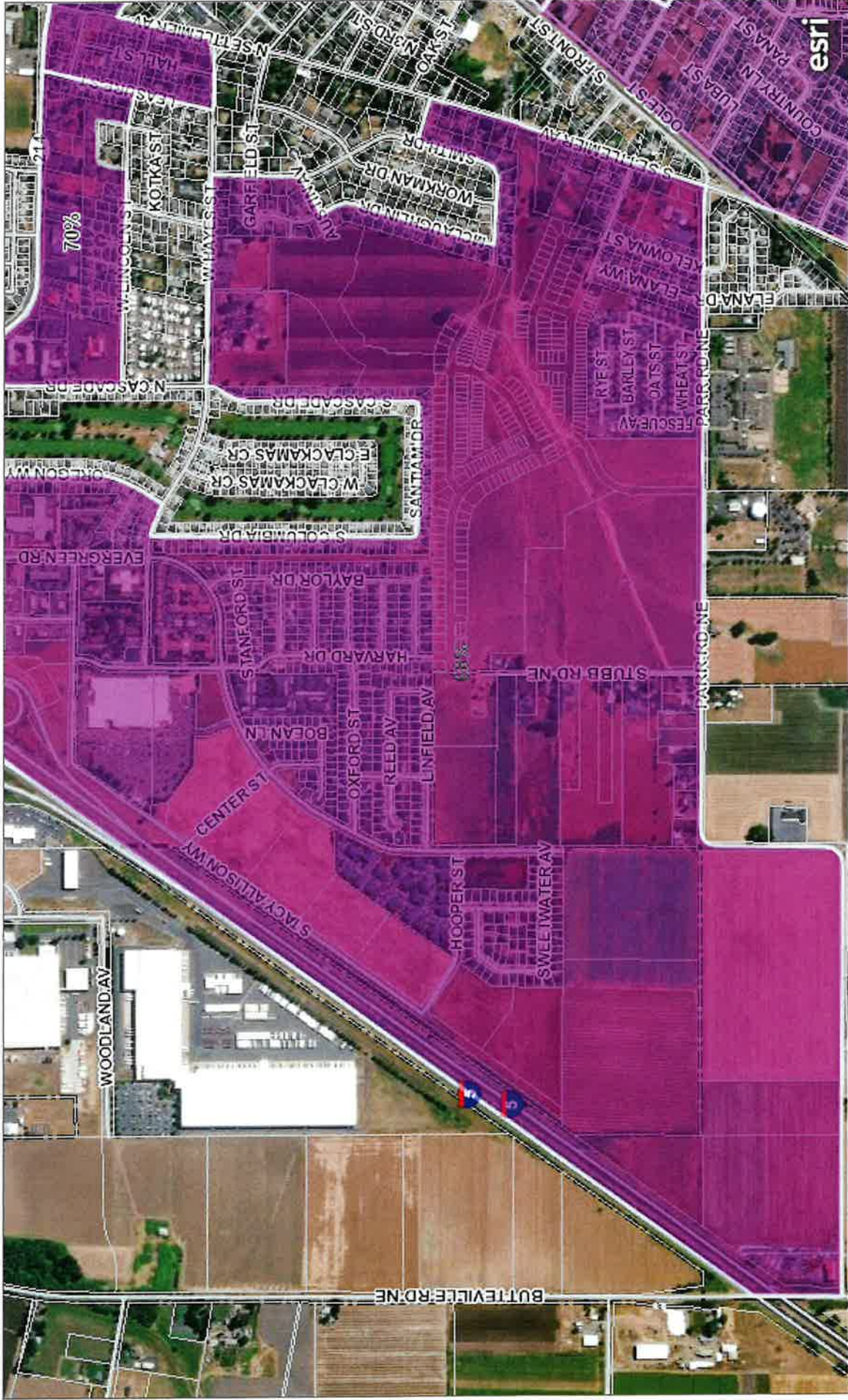
CDBG Low to Moderate Income - Census Block Groups Map



Web map for viewing Low Moderate Income Summary Data (LMISD) for Marion County, published by US Department of Housing and Urban Development

MC IT-GIS, MC Planning | MC-ASR, MC-IT GIS | MC IT-GIS, MC PW | Maxar

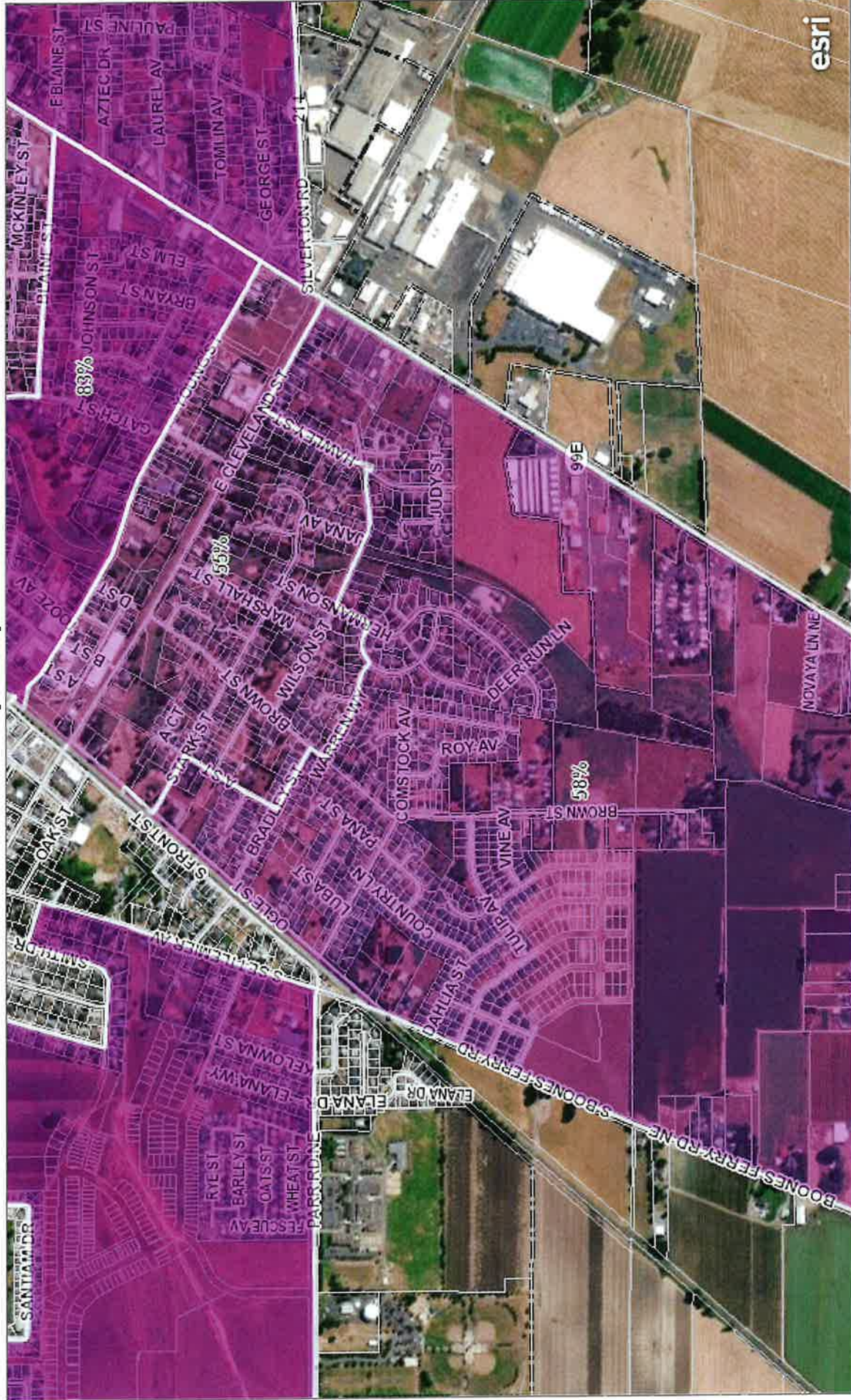
CDBG Low to Moderate Income - Census Block Groups Map



Web map for viewing Low Moderate Income Summary Data (LMISD) for Marion County, published by US Department of Housing and Urban Development

MC IT-GIS, MC Planning | MC-ASR, MC-IT GIS | MC IT-GIS, MC PW | Maxar

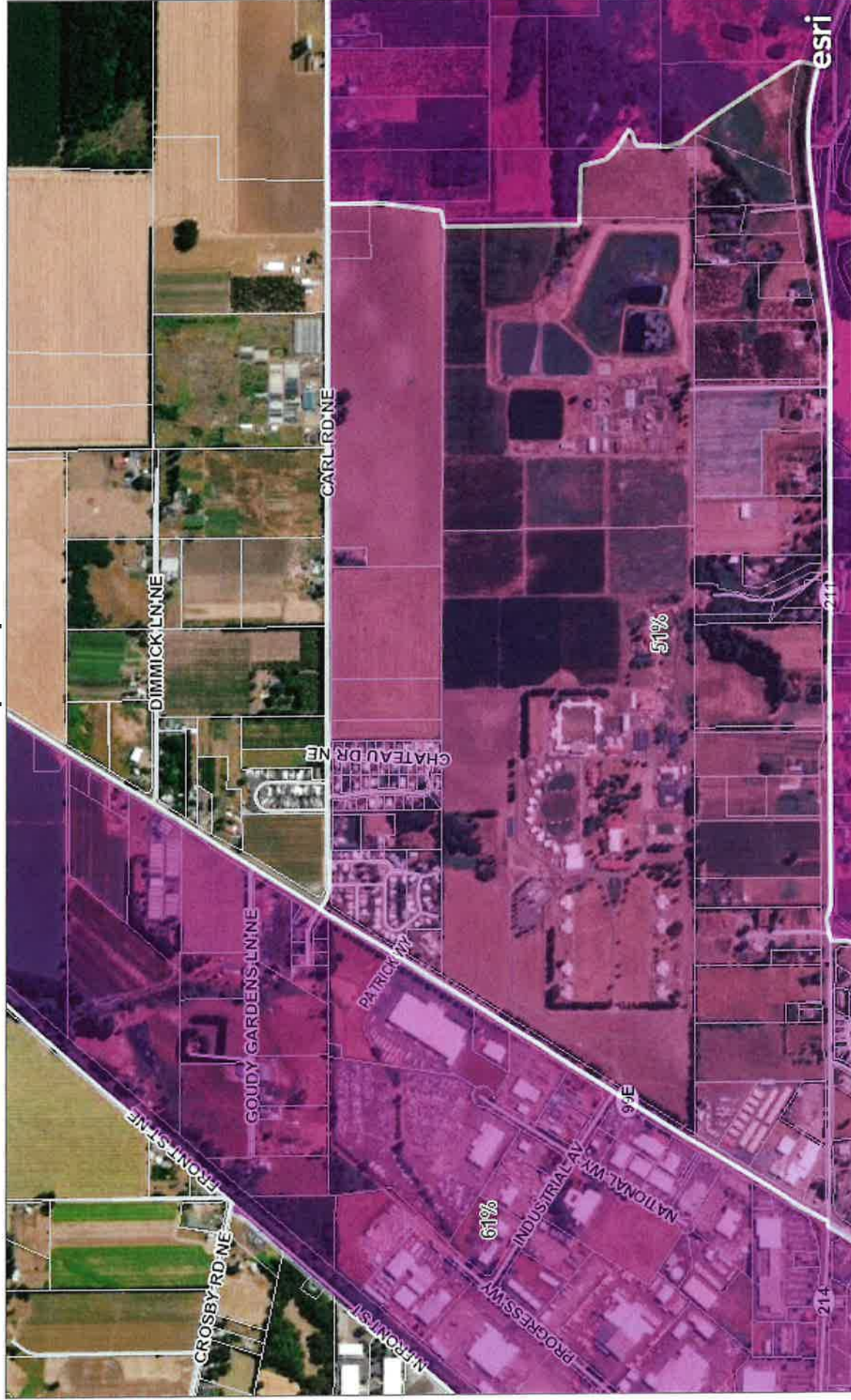
CDBG Low to Moderate Income - Census Block Groups Map



Web map for viewing Low Moderate Income Summary Data (LMISD) for Marion County, published by US Department of Housing and Urban Development

MC IT-GIS, MC Planning | MC-ASR, MC-IT GIS | MC IT-GIS, MC PW | Maxar

CDBG Low to Moderate Income - Census Block Groups Map



Web map for viewing Low Moderate Income Summary Data (LMISD) for Marion County, published by US Department of Housing and Urban Development

MC IT-GIS, MC Planning | MC-ASR, MC-IT GIS | MC IT-GIS, MC PW | Maxar