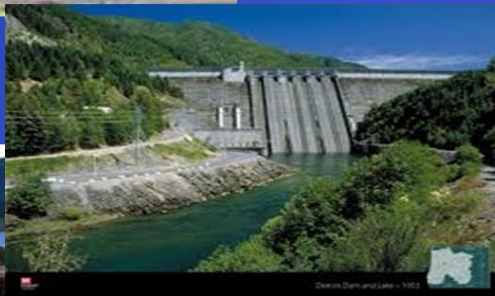


Emergency Management Update

Ed Flick, MPA





terrorism



FEMA has a 'blunt' new message: It won't be there for every future disaster



By Nicole Ogrysko @nogryskoWFED
April 4, 2018 5:32 pm ⌚ 4 min read

200 Shares



Top Stories

Letters to the Editor

Columnists



OPINION

Salem residents not personally disaster-prepared

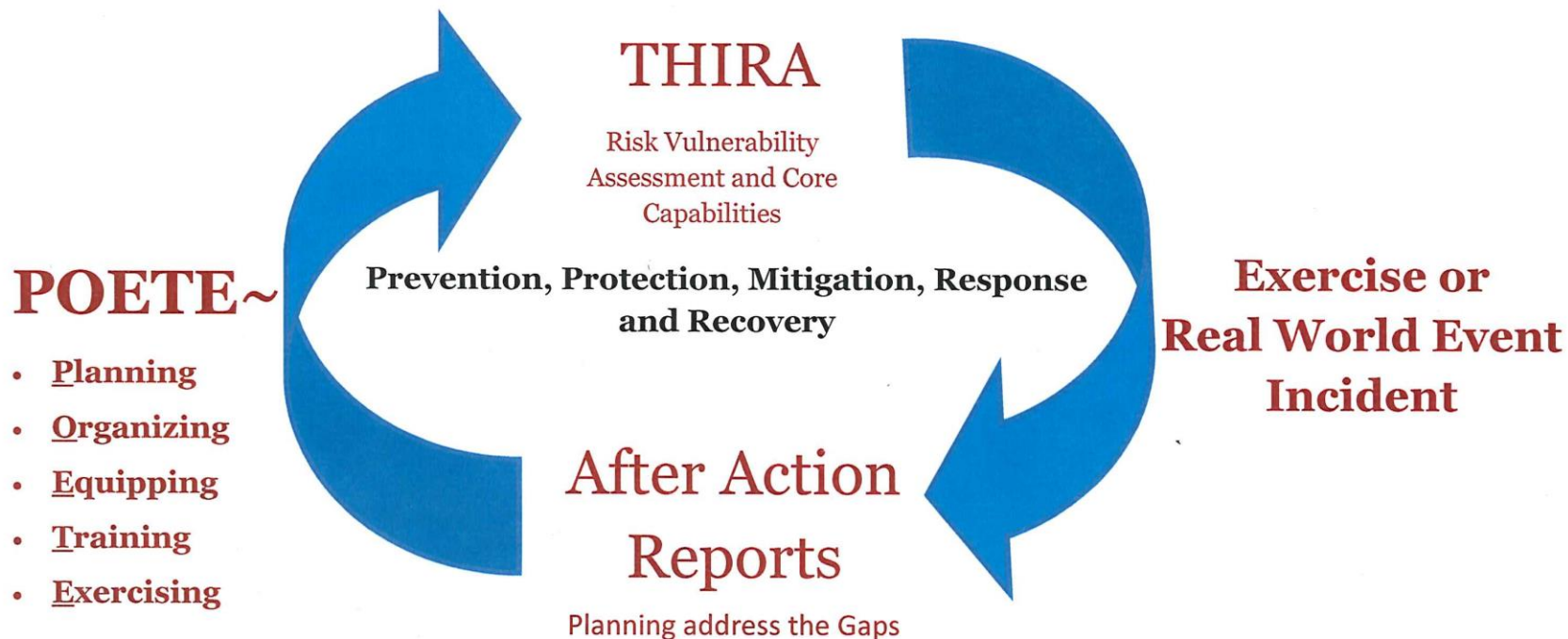
OPINION: Run on bottled water shows residents are not prepared for larger-scale emergencies.

Partnerships – the Whole Community

- ▶ Cities
- ▶ School districts
- ▶ Fire Districts
- ▶ The Business Community
- ▶ Non-profits
- ▶ The Faith Community
- ▶ Neighborhood Associations
- ▶ Service Organizations
- ▶ Utilities
- ▶ Colleges and Universities
- ▶ Emergency Management Volunteer Groups



Marion County: Approach to Emergency Management



ALL- HAZARDS

Natural, Technological and Human-caused
Whole Community Approach

Threats and Hazards

Earthquake	School & Workplace Violence	Radiological Release
4.0	2.90	1.95
Extreme Weather-Winter Storm	Wildland Interface Fire	Volcanic Eruption
3.55	2.8	1.0
Large Flood	Biological Chemical, Sabotage & Cyber Incident & Explosives	Tornado
3.25	Radiological Attack-Terrorism	1.0
Major Landslide	2.7	
3.25	Power Failure	
Civil-disorder/Terrorism	2.7	
3.1	Epidemic	
Severe Drought	2.65	
3.1	Pandemic	
<u>Hazardous Materials Incident</u>	2.65	
<u>3.0</u>	Sever Weather	
<u>Transportation Accident/Train Derailment</u>	2.55	
<u>3.0</u>	Animal Disease Outbreak	
	2.5	
	Dam/Levee Failure	
	2.35	
	Extreme Weather-High Temp.	
	2.2	



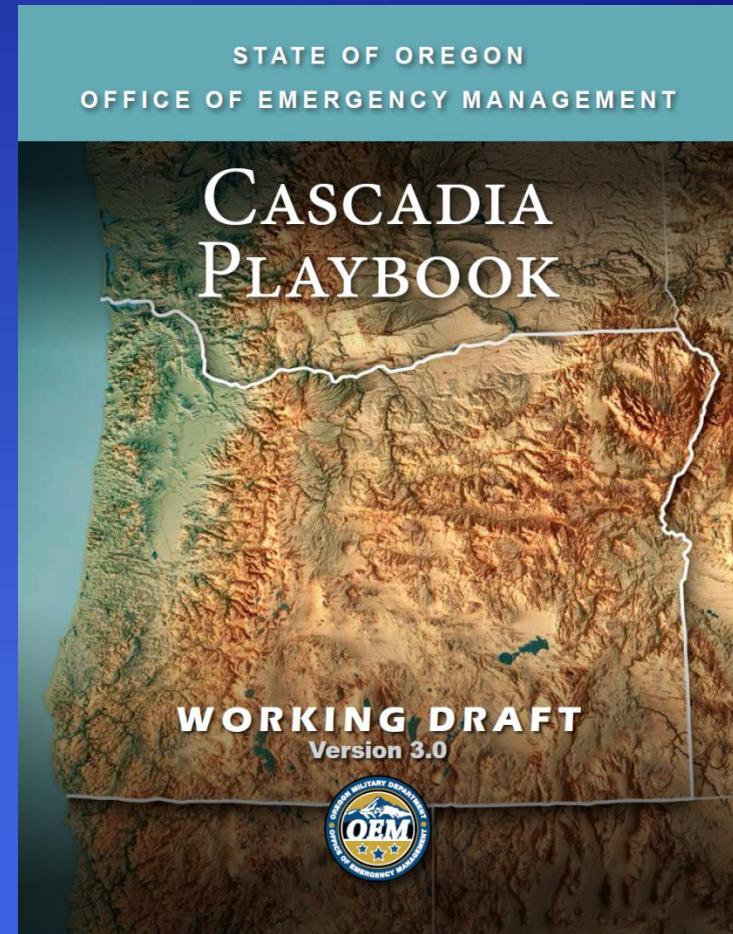
Catastrophic

Critical

Limited

What we do to respond

- Activate emergency / business continuity plans
- Establish communications and assess damage
- Clear critical routes
- Support trauma surge, hospital decompression and medical evacuations
- Return people to their homes ASAP, shelter everyone else
- Establish distribution of food, water, fuel
- Prevent cascading effects on at-risk and sheltered populations
- Receive external support
- Support emergency repairs on lifelines



Transportation

CAN YOU PROVIDE

- RESPONSE VEHICLES
- ENGINEERING
- FUEL
- REPAIR ASSISTANCE
- AIRCRAFT
- HEAVY EQUIPMENT
- EVACUATION VEHICLES
- DAMAGE ASSESSMENT

CAN YOU RESTORE

- ROADS
- BRIDGES
- TUNNELS
- PORTS
- DOCKS

Find
your
Response
Function

TRANSPORT NEEDS

- RESPONDERS
- TRAILERS
- FUEL
- SUPPLIES



Transportation

Communications

Health and Medical

Finance

Hazardous Materials

Food and Water

Energy

Mass Care

Transportation and Fuel

Ask the experts

Road Clearing Table Top Exercise March 20, 2017

- Marion County and City of Salem co-hosted
- Participants included local companies involved in:
 - Local road construction
 - Fuel distribution
 - Vehicle maintenance
- State Agencies
 - Oregon Dept of Transportation
 - Oregon Dept of Energy
 - Oregon Military Dept
 - Oregon Emergency Mgt



Marion County Primary Points of Distribution And Tier 1 Priority Routes





FEMA

Fact Sheet

Public Assistance: Procurement Conducted Under Exigent or Emergency Circumstances

The Federal Emergency Management Agency (FEMA) Public Assistance (PA) Program provides supplemental assistance to states, territories, tribes, and local governmental entities, as well as certain private non-profit organizations (applicants) following major disasters and emergencies declared by the President. FEMA's *Public Assistance Program and Policy Guide* (<http://www.fema.gov/public-assistance-policy-and-guidance>) provides comprehensive information regarding assistance that FEMA can make available, and the requirements that applicants must follow in order to receive the assistance. This Fact Sheet provides key information that non-state applicants need to consider when utilizing contracted resources under exigent or emergency circumstances.

Federal regulations (2 C.F.R. Part 200 – Uniform Administrative Requirements, Cost Principles, and Audit Requirements For Federal Awards) establish requirements for non-state applicants concerning the exigency or emergency exception that permits the use of noncompetitive procurements, frequently referred to as "sole-source contracting." These exceptions and associated procurement requirements are discussed further below. The information presented within applies to all categories of work under the PA Program. Emergency work funded under Category A (Debris Removal) and Category B (Emergency Protective Measures) is most often associated with a public exigency or emergency. However, there may be instances where exigent or emergency circumstances necessitate the use of noncompetitive procurements for permanent work (Categories C-G). The answers to the frequently asked questions below provide additional guidance on the acceptable use of noncompetitive proposals under exigent or emergency circumstances, which is described in regulation at 2 C.F.R. § 200.320(f)(2).

It is essential that all applicants understand that both FEMA and the U.S. Department of Homeland Security's Office of Inspector General (OIG) closely review applicant procurement actions and contract selections, with a particular emphasis on noncompetitive procurement actions, to evaluate compliance with Federal requirements. *Failure to follow federal contracting and procurement requirements puts applicants at risk of not receiving reimbursement for otherwise eligible disaster costs.*

What is the exigency or emergency exception?

Non-state applicants must follow the procurement requirements found at 2 C.F.R. §§ 200.317 – 200.326. However, Federal regulations allow for noncompetitive procurements under certain circumstances, including when a non-state applicant determines that immediate actions required to address the public exigency or emergency cannot be delayed by a competitive solicitation. This represents an exception to requirements for full and open competition. FEMA approval is not required for use of noncompetitive procurements under the emergency or exigency exception, however, the use of noncompetitive procurements does not relieve non-state applicants from complying with other procurement requirements or from ensuring that costs are reasonable.

"FEMA's mission is to support our citizens and first responders to ensure that as a nation we work together to build, sustain, and improve our capability to prepare for, protect against, respond to, recover from, and mitigate all hazards."

January 19, 2018

Oregon Office of Emergency Management Region 1 Debris Management Plan



Prepared for:



Prepared by:



OREGON

Regional Resilience Assessment

- 18 Month-long assessment of Roads, Airfields, Ports and Rail to support Cascadia Earthquake response
- Participants
 - Department of Homeland Security (DHS)
 - Department of Defense
 - FEMA
 - ODOT
 - OEM
 - Local Jurisdictions



Health and Medical

CAN YOU PROVIDE

- MEDICAL SUPPLIES, EQUIPMENT, OR PERSONNEL
- PHARMACEUTICALS
- DURABLE MEDICAL EQUIPMENT
- EMS ASSETS AND PERSONNEL
- MEDICAL FACILITIES

CAN YOU SUPPORT

- MEDICAL NEEDS OF SHELTER OPERATIONS
- MASS FATALITY OPERATIONS
- PHARMACEUTICAL DISTRIBUTION
- DAMAGE ASSESSMENT OF FACILITIES

Find
your
Response
Function

MEDICAL SERVICES

- EMERGENCY MEDICAL CARE
- MENTAL HEALTH CARE
- GREIF/CRISIS COUNSELING
- CARE FOR CHRONIC MEDICAL PATIENTS
- PRIMARY CARE



▶ Transportation

▶ Communications

▶ **Health and Medical**

▶ Finance

▶ Hazardous Materials

▶ Food and Water

▶ Energy

▶ Mass Care

Hazardous Material

CAN YOU PROVIDE

- INTERIM STORAGE
- MATERIAL DISPOSAL
- PERSONAL PROTECTIVE EQUIPMENT- (PPE)
- JUST-IN-TIME SAFETY TRAINING FOR RESPONDERS
- DAMAGE ASSESSMENTS

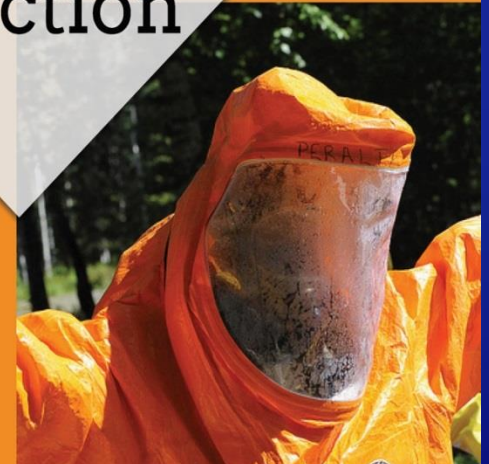
CAN YOU IDENTIFY

- LIFE-THREATING RELEASES
- NEED FOR EVACUATIONS
- HAZARD CLEAN-UP PRIORITIES

Find
your
Response
Function

CLEAN-UP NEEDS

- CONTROL AND CONTAIN HAZARDOUS MATERIALS
- CLEAN OIL
- CLEAN OTHER HAZARDOUS MATERIALS



- ▶ Transportation
- ▶ Communications
- ▶ Health and Medical
- ▶ Finance
- ▶ **Hazardous Materials**
- ▶ Food and Water
- ▶ Energy
- ▶ Mass Care

Food and Water

CAN YOU PROVIDE

- FOOD
- POTABLE WATER
- PREPACKAGED WATER
- ICE
- STORAGE FACILITIES
- ANIMAL FOOD
- WATER TESTING
- KITCHEN FACILITIES

CAN YOU COORDINATE

- PROVISIONS TO RESPONDERS, MEDICAL FACILITIES, AND RESTORATION WORKERS
- PROVISION OF ANIMAL FOOD TO NECESSARY SHELTERS

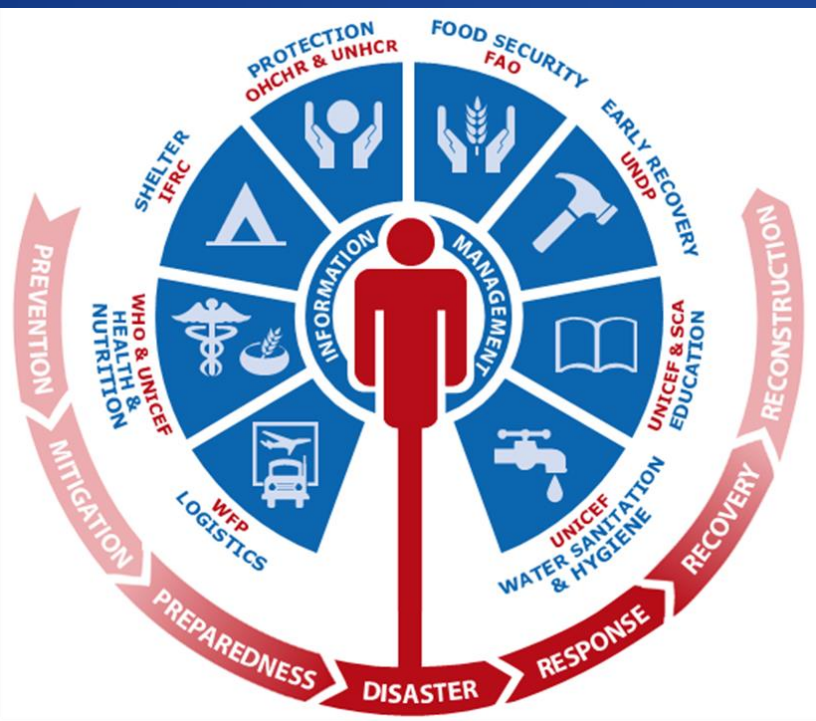
Find
your
Response
Function

SAFETY NEEDS

- ASSURE SAFETY AND SECURITY OF FOOD SUPPLY
- ASSURE SAFETY OF FOOD/WATER SOURCES
- COORDINATE FOOD/WATER SAFETY ADVISORIES
- ASSESS DAMAGE TO FACILITIES



- ▶ Transportation
- ▶ Communications
- ▶ Health and Medical
- ▶ Finance
- ▶ Hazardous Materials
- ▶ **Food and Water**
- ▶ Energy
- ▶ Mass Care



Marion County Emergency Management Tabletop Exercise

AGENDA

Date

March, 20 2018

Time

3:00pm-5:00pm

Location

Corban University,
Psalm Performing
Arts Center
5000 Deer Park Dr SE,
Salem, OR 97317

*Thank you Corban University
for hosting this event!!!*



- 3:00- Welcome
 - Ed Flick
- 3:05- Distribution Center: Hurricane Harvey
 - Tom O'Black
- 3:15- What is the Cluster System?
 - Sue Romanski
- 3:45- Site Orientation
 - Mike Roth
- 4:00- Start Exercise
 - Community Resilience
 - Operational Coordination
 - Supply Chain Integrity and Security
- 4:45-End Exercise
- Until 5:00-Debrief/Hot Wash
- Questions/Comments

Thank you for coming!



Packaged delivery

Secure | <https://marioncounty.maps.arcgis.com/apps/CrowdsourcingManager/index.html?appid=c1445673969d48c2b70d9247b1aa1202>

Apps Mid Willamette Valley Emergency Manager IS-524: Continuity of ArcGIS Online | Price Bookmarks Emergency Disaster USDA Designates 2 EM Gold Marion County Oregon Mid-Atlantic Center ArcGIS - Sign In Veterans and Emergency OregonHealthReady

June 6 2018 Algae Bloom Edwin Flick

Public Safety Reports 1 selected / 156 records

Incident Number	Incident Name	Category	Incident Type	Description	Severity	Severity De
2018-1242	Salem Water Contamination	Public Health	Public Health - Incident	Catherine Prettyman 503-559-9803 385		
2018-1242	Salem Water Contamination	Public Health	Public Health - Incident	Brittney Mendoza- 1150 14th St SE, Sa	1 bottle water left	Unknown
2018-1242	Salem Water Contamination	Public Health	Public Health - Incident	Kathy Corrigan (Landlord) - 687 Oregon	1 Gallon water left	Unknown
2018-1242	Salem Water Contamination	Public Health	Public Health - Incident	Shirley Finanger 503-881-2690 1920 La	Has 6 bottles left	Other
2018-1242	Salem Water Contamination	Public Health	Public Health - Incident	Ann (Salem Home Care) - 925 Commer	Requestion 50 Gallons	Unknown

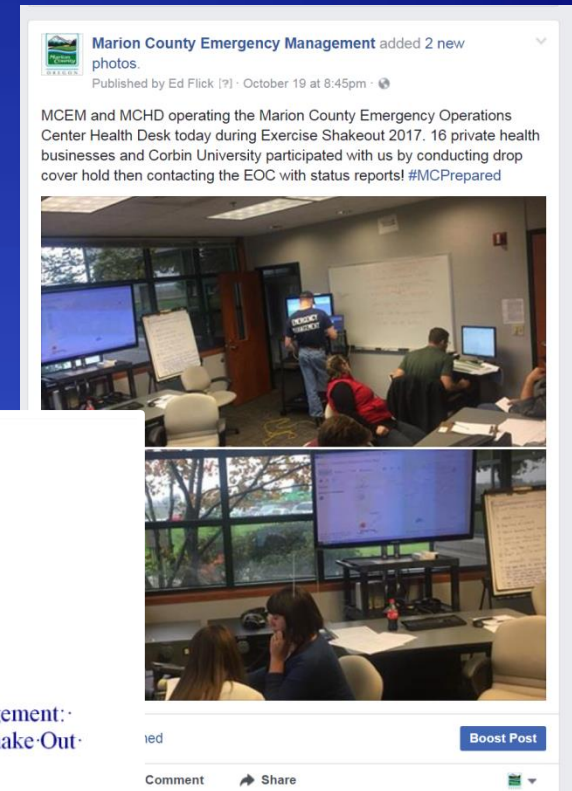
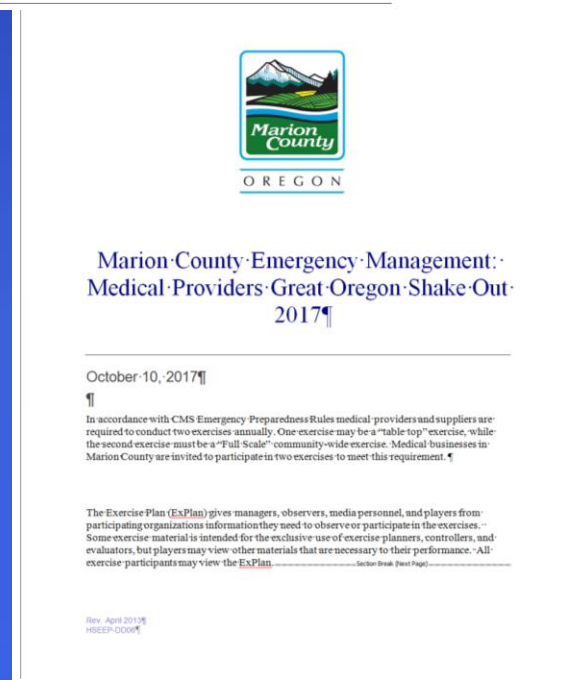
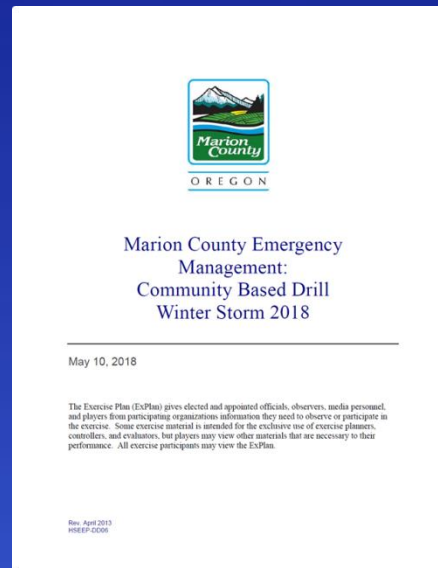
All Issues: 2018-1242

Incident Number 2018-1242
 Incident Name Salem Water Contamination
 Category Public Health
 Incident Type Public Health - Incident
 Description Ann (Salem Home Care) - 925 Commercial St NE Ste 310 Salem, OR 97301-503.566.3346.
 Severity Requestion 50 Gallons
 Severity Unknown
 Description
 District
 Current Status Closed
 Assistance Required Yes
 Assigned To Delivery - Spencer
 Validated
 Last Update Date 6/12/2018, 12:00 AM
 Last Editor JilIO 1738
 Comments

City of Salem, Oregon Metro, Bureau of Land Management, State of Oregon, ... esri

Involving partners in exercises

- October 10, 2017
- March 30, 2018
- May 10, 2018
- July 30-Aug 2
- November 8 2018



Looking Ahead

Communication

CAN YOU PROVIDE

- TEMPORARY COMMUNICATIONS
- COMMUNICATION EQUIPMENT
- COMMUNICATION SERVICES
- RESTORATION TEAMS
- SHELTER COMMUNICATION CAPABILITIES
- TRANSLATION SERVICES
- DAMAGE ASSESSMENTS

CAN YOU REPAIR

- COMMUNICATION CAPABILITIES
- COMMUNICATION EQUIPMENT
- COMMUNICATION SYSTEMS

Find
your
Response
Function

BROADCAST NEEDS

- PUBLIC INFORMATION, ALERTS AND WARNINGS
- EVACUATION ROUTES, SHELTER SITES, AND ASSEMBLY SITES
- ANIMAL SHELTER INFORMATION

- ▶ Transportation
- ▶ **Communications**
- ▶ Health and Medical
- ▶ Finance
- ▶ Hazardous Materials
- ▶ Food and Water
- ▶ Energy
- ▶ Mass Care



Energy

CAN YOU PROVIDE

- GENERATORS
- FUEL
- PERSONNEL/SUPPLIES FOR FUEL SITES
- FUEL DELIVERY
- NATURAL GAS
- ELECTRICITY
- REPAIR PERSONNEL

CAN YOU REPAIR

- ENERGY FACILITIES
- INFRASTRUCTURE
- GENERATORS
- GAS LINES

Find
your
Response
Function

ASSESSMENT NEEDS

- DEPLOY TEAMS TO CONTINUALLY ASSESS DAMAGE TO ENERGY SYSTEMS FOLLOWING AFTERSHOCKS
- PRIORITIZE RESTORATION EFFORTS
- MONITOR AND ASSESS ENERGY SUPPLIES AND INFRASTRUCTURE



▶ Transportation

▶ Communications

▶ Health and Medical

▶ Finance

▶ Hazardous Materials

▶ Food and Water

▶ **Energy**

▶ Mass Care

County Responsibilities

- County emergency management agencies have emergency response plans identifying mission critical functions for the county and a general approximation of the fuel needed to perform identified missions. This includes the cities, special districts, and regional governments within county borders. County plans should have a fuel annex or section in their plans that identifies:
- Priority tier 1 roads the county will restore to support fuel deliveries and other disaster relief commodities.
- Fuel Points of Distribution (FPOD) to receive emergency bulk fuel supplies.
- Methods to deliver the fuel from the designated FPODs to critical facilities and to the emergency responders in the field.

Oregon Fuel Action Plan



Plan, Prepare, Respond, & Recover
From Severe Fuel Shortages



Mass Care

CAN YOU PROVIDE

- FACILITIES
- TEMPORARY/SHORT-TERM HOUSING
- EMERGENCY POWER
- SUPPLIES: CLOTHING, BLANKETS, HYGIENE, SANITATION, ETC.
- SANITATION SERVICES
- ANIMAL SHELTERING

CAN YOU FACILITATE

- VOLUNTEER COORDINATION
- FAMILY REUNIFICATION
- CARE AND SUPERVISION OF UNACCOMPANIED MINORS.
- DAMAGE ASSESSMENTS OF POTENTIAL SHELTER SITES

Find
your
Response
Function

MANAGE DONATIONS

- RECEIVE
- STORE
- INVENTORY
- DISTRIBUTE

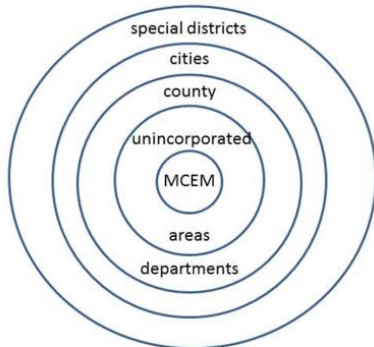


- ▶ Transportation
- ▶ Communications
- ▶ Health and Medical
- ▶ Finance
- ▶ Hazardous Materials
- ▶ Food and Water
- ▶ Energy
- ▶ **Mass Care**

Operational Coordination

Private partners
 faith community
 businesses
 private non-profits

Citizens



State Agencies

OEM
 OHA
 OSFM
 DAS
 DHS
 DOE
 ODOT
 DOJ
 DEQ

Task Forces / Coalitions
 Mid-Willamette Emergency Communications Collective
 Region 2 Healthcare Coalition



MCEM Adobe Connect Eclipse 21 August (EM Setup) - Adobe Connect

Meeting Layouts Pods Audio

Situational Awareness

0927: Talbot plan: Op leader A113 Derschon 3 TST assigned to keep roadways clear for fire apparatus. MCPW: staged at IS and Talbot with a water tender from USFS for quick reaction to active wildland fire.

0944: Check this link now displaying Salem and Marion road closure information.
<https://marioncounty.maps.arcgis.com/apps/View/index.html?appid=e36c4bfd694c01989deb24a661057>

0951: MC Parks reports that all parks located on the North Fork are calm. Spongs, Bonesteel and Aumsville are calm as well.

0956 via Metcom: reports of some rumors going around about a wildfire in Mill City/Gates area that is threatening the communities. No active fire incidents and ODF has confirmed no working fires. We have made an attempt to correct those rumors via Social Media and Gary

1010: This has been passed along to KYAC radio in the Santiam Canyon and has been posted on Facebook.

Attendee List (23)

- Ed Grambusch
- Eric Hlad
- Jill Ogden
- Joe Fenimore
- John Thompson - METCOM
- Jolene Kelley
- Jordan Vandyeke - Metcom 911
- Krista Carter
- Lisa Miller
- P Hutchinson

Operation (Everyone)

Jordan Vandyeke - Metcom 911: 0954 Good morning everyone, got reports of some rumors going around about a wildfire in Mill City/Gates area that is threatening the communities. No active fire incidents and ODF has confirmed no working fires. We have made an attempt to correct those rumors via Social Media and Gary Swanson passing along to local radio station.

Edwin Flick: Thank you Metcom

Krista Carter: 07:50 at 0800 we will be on the National Weather Service call for weather updates

Edwin Flick: test

Finance/Admin (Everyone)

Krista Carter: 08:50 GIS is helping Tim; taken care of

Terry Riley: PIO: Jordan Vandyeke - Metcom 911: 0954 Good morning everyone, got reports of some rumors going around about a wildfire in Mill City/Gates area that is threatening the communities. No active fire incidents and ODF has confirmed no working fires. We have made an attempt to correct those rumors via Social Media and Gary Swanson passing along to local radio station.

Edwin Flick: Thank you metcom

Krista Carter: That was the coolest thing I've ever seen!!!!

Logistics (Everyone)

Name	Size
SitRep Notes 08182017.docx	16 KB
SitStat Notes 08202017.docx	16 KB
Initial incident brief.pptx	16 MB
Eclipse Info Guide_Final.pdf	4 MB
SitStat Notes 08192017.docx	15 KB
08202017 SitStat Notes Page Final.docx	20 KB
State ECC SitRep_03_08202017.pdf	1 MB

Upload File... Download File(s)



Marion County Community Emergency Response Teams



- Teams operate in: Gates, Keizer, Mt. Angel, Salem, East Salem, Aumsville, Silverton, Stayton, Turner, Woodburn, and Gervais
- New CERTs being established in Aurora and Santiam Canyon



Marion County Emergency Management



Ed Flick

EFlick@co.Marion.or.us

(503) 365-3133