



Marion County Sheriff's Office PUBLIC SAFETY BUILDING

Completion date Summer 2018



Groundbreaking Ceremony – August 2017

30,909 SQ FT

\$11.6 MILLION

Five Months of Progress





FASCIA TRIM/SOFFIT BD
SW 9171 'FELTED WOOL'



LAP SIDING
CEMENT FIBER SIDING WITH 6" EXPOSURE
'STAINED CEDAR'



CMU CAP
WILLAMETTE GRAYSTONE
'NATURAL' - GROUNDFACE

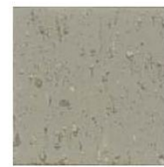
PARTIAL NORTH ELEVATION
36' x 112'



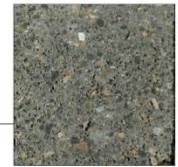
CONCRETE PLANTERS
BOARD FORM
SEALED CONCRETE



LAP SIDING WITH 6" EXPOSURE, AND
STEEL BEAMS & COLUMNS
SW 7505
'MANOR HOUSE'



BRICK VENEER
INTERSTATE BRICK
'PEWTER'



4" CMU VENEER
WILLAMETTE GRAYSTONE
'MIDNIGHT' - GROUNDFACE

MARION COUNTY SHERIFF'S OFFICE PUBLIC SAFETY BUILDING

Final Design

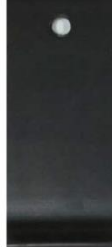
**CARLSON
VEIT**
ARCHITECTS PC

ARCHITECTURE • INTERIOR DESIGN
503-385-0281 • FAX 503-385-2455 • WWW.CARLSONVEIT.COM
1000 BRIDGE STREET, SUITE 200, PORTLAND, OREGON 97201

EXTERIOR MATERIALS



WALKOFF CARPET - MANNINGTON RUFFIAN II
EBONY EARTH 1506

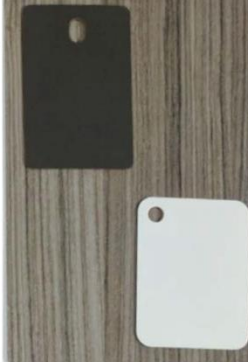


RUBBER BASE - BURKE
BLACK BROWN 523



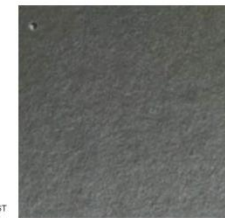
QUARTZ - RECEPTION COUNTER
CAMBRIA TEMPLETON DESERT COLLECTION

LAMINATE
HORIZONTAL
SURFACES -
WILSONART
DFH-60 SLATE GREY



PAINT MILLER
POWER LUNCH 0572 WOOD SHADOW 0205 LUCKY DAY 0428 GROPIUS GRAY H0147A

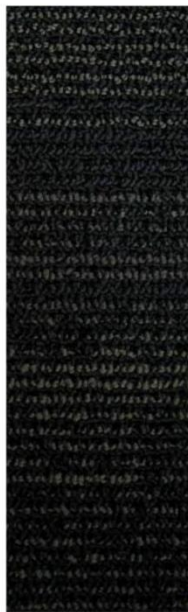
LAMINATE VERTICAL
SURFACES -
ASET LAMINATI
130 LUCIDA
649 GRANWOOD



TOILET PARTITIONS:
BOBRICK SCM - FOREST
GREEN SIERRA SERIES



CARPET 1 - SHAW STILL TILE COLLIIDE 5T051



CARPET 2 - SHAW IGNITE TILE COLLIIDE 5T049



LVT INTERFACE LEVEL SET



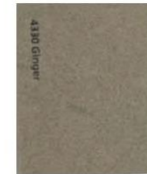
LAMINATE CHAIR
RAIL WILSONART
CLASSIC LINEN
4943-38



UNISEX RESTROOMS FRP - MARLITE
P-151 LIGHT GRAY



RESTROOM WALL TILE: DAL TILE K175



RESTROOM QUARTZ COUNTER:
CAESARSTONE 4330 GINGER



SHEET VINYL - LONISEAL LONECO 7233



RESTROOM TILE: DAL TILE SA09 SLATE ATTACHE

MARION COUNTY
SHERIFF'S OFFICE
PUBLIC SAFETY BUILDING
INTERIOR MATERIAL SELECTIONS
JUNE 23, 2017



INTERIOR MATERIALS

Marion County Sheriff's Office Public Safety Building

