

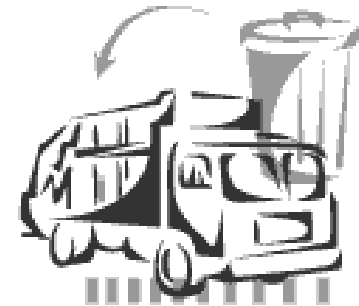
# Marion Resource Recovery Facility Presents:

“From Collection to Material  
Management”



# Your Local Haulers

- D&O Garbage Service
- Loren's Sanitation Service
- North Marion Recycling & Disposal
- Pacific Sanitation Service
- Republic Services of Marion County
- Republic Services of Salem
- Suburban Garbage Service
- Valley Recycling & Disposal





# The Past...

- Covanta Energy from Waste Facility reaches capacity
- Marion County searches for solutions
- Local haulers came together with an innovative idea
- ***The solution - MRF – Material Recovery Facility***

# The Past

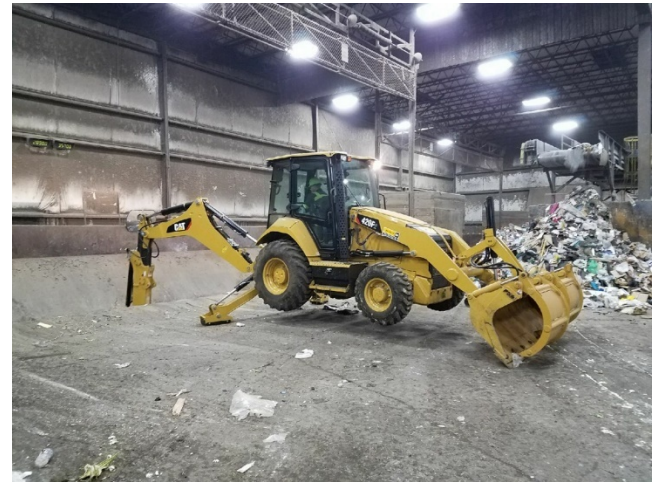
In April 2000, the haulers opened the Marion Resource Recovery Facility (MRRF) in Marion County as part of their continual commitment to environmental stewardship.



# Tipping Floor



36,000 square foot  
Processing Facility





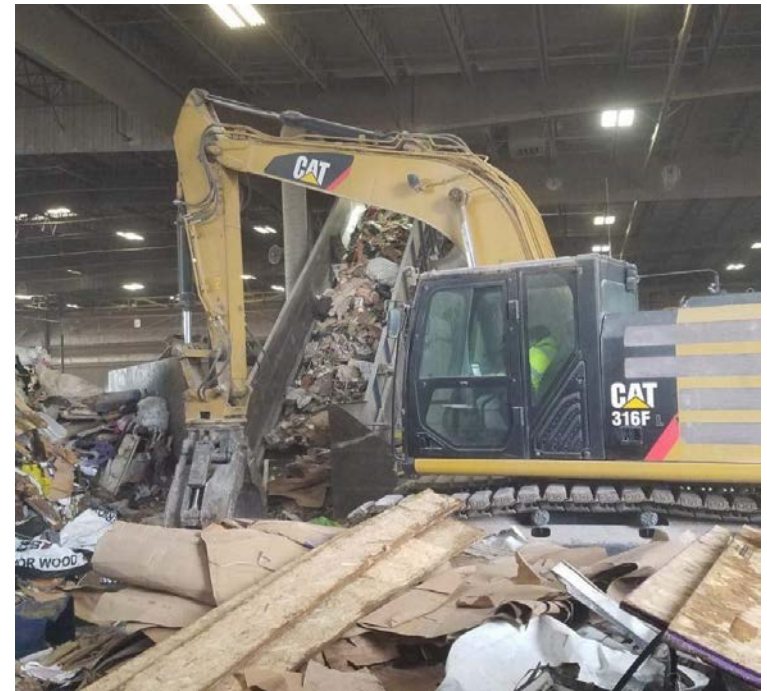
# Inbound Waste Stream



- C&D (construction debris)
- MSW (municipal solid waste)
- Mixed Organics/Yard Debris
- Curbside Recycle – commingle

## Tons handled at MRRF:

- Year 2001 - 28,516 tons
- Year 2018 - 170,143 tons
- 103,535 tons of mixed waste



# Sorting

Additional drop boxes added to support increased material processed



MRRF enhancements since year 2000.

- 2nd sort shift started the summer of 2014
- Processing 7 days a week to support all SKRTS and NMRTS material.

# “What we Recycle”

## Materials recovered from the Mixed Waste Stream in tons: 2018

- Appliances- 18.02
- Batteries- 2.10
- Cardboard- 1,063
- Concrete- 1,284
- Electronics- 11.84
- Metal – Ferrous/Non Ferrous- 2,914
- Sheetrock- 256
- Tires and Rims-12.41
- Hog Fuel- 13,579





# Trailer loading



## Year 2001

- 4 Trailers
- 2 Tractors
- 1 Yard Goat – truck which shuttles trailers in the yard
- 1,655 loads

## Year 2018

- 19 Trailers
- 9 Tractors
- 3 Yard Goat's – truck which shuttles trailers in the yard
- 7,919 loads



# Wood Chip Grinding



MRRF purchased a Wood Grinder in 2011 to support increased tons and market conditions

In 2018 the MRRF ground 13,579 tons of wood, which is used for Hog Fuel



## Marion Resource Recovery Facility, LLC. Opening year of 2000 Compared to current year of 2018

- Full-Time Employees - 10 to 21
- Temporary Employees - 0 to 12
- Inbound Mixed Waste Stream - 28,516 to 170,143
- Tractors – 2 to 9
- Trailers – 4 to 19
- Processing Facility SQ FT– 36,000 to 36,000